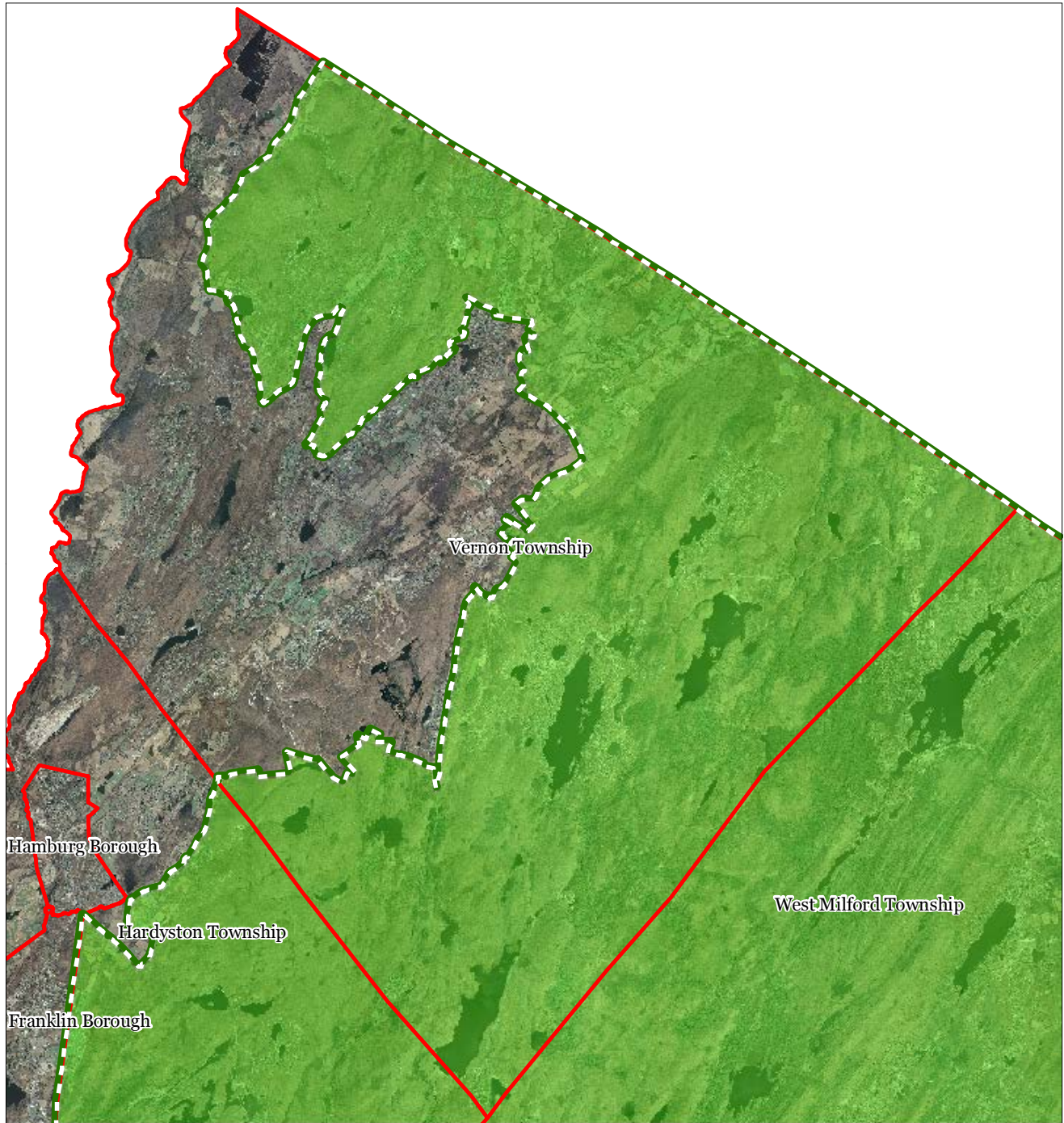


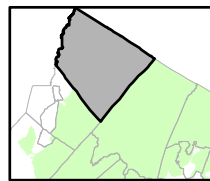
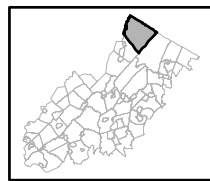


Figure 1: Preservation Area



-  Preservation Area
-  Municipal Boundaries

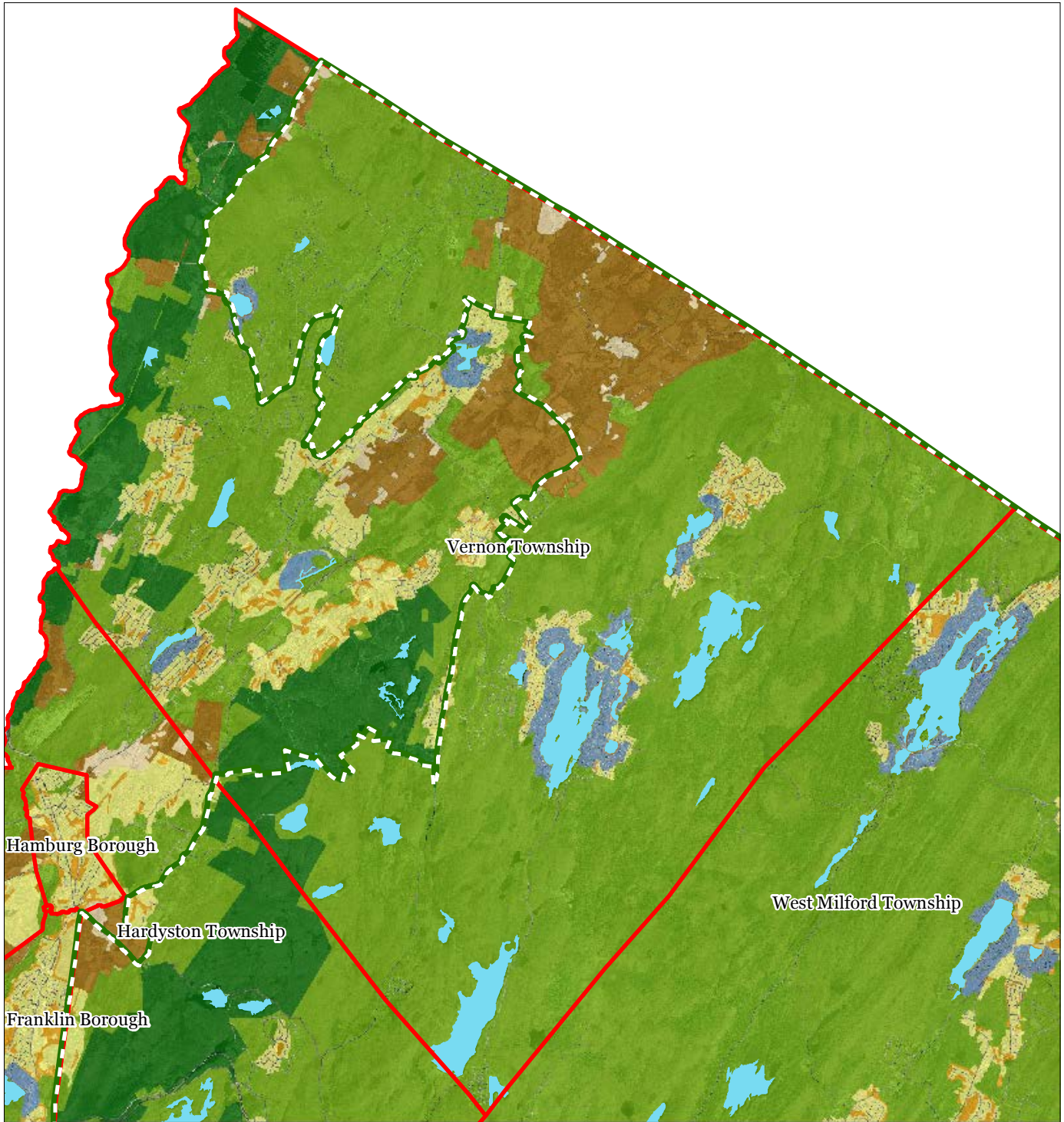
Vernon Township



1 inch = 1.48 miles



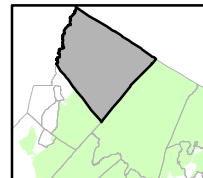
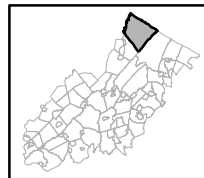
Figure 2: Land Use Capability Map Zones



Regional Master Plan Overlay Zone Designation

- | | |
|--|---|
|  Protection |  Lakes Greater Than 10 acres |
|  Conservation |  Preservation Area |
|  Existing Community |  Municipal Boundaries |
- Sub-Zone**
-  Existing Community Environmentally Constrained
 -  Conservation Environmentally Constrained
 -  Lake Community
 -  Wildlife Management

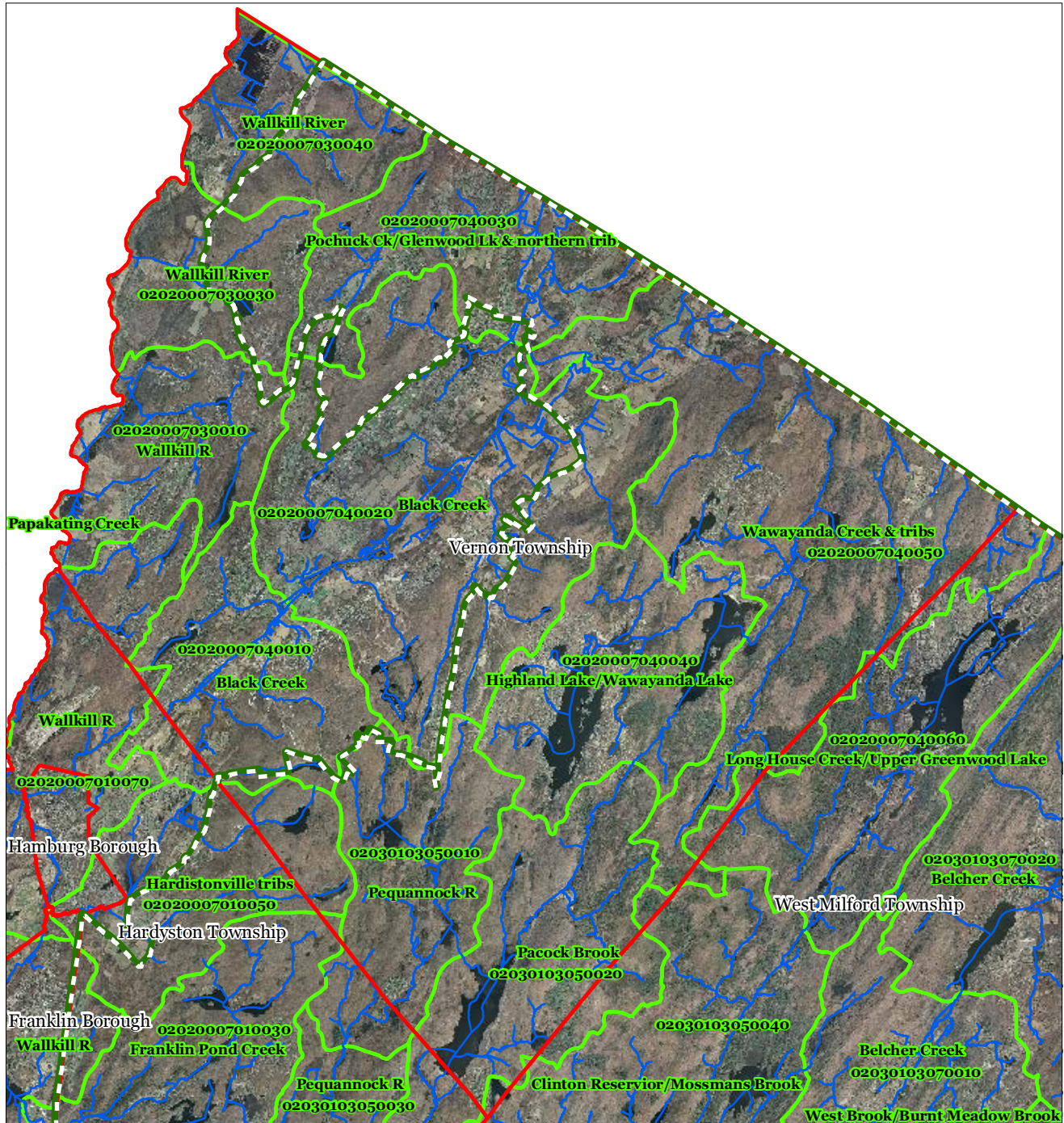
Vernon Township

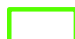





1 inch = 1.48 miles

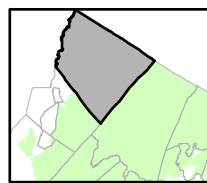
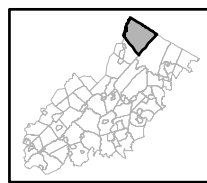


Figure 3: HUC 14 Boundaries



-  HUC 14 Subwatersheds
-  Stream Centerlines
-  Preservation Area
-  Municipal Boundaries

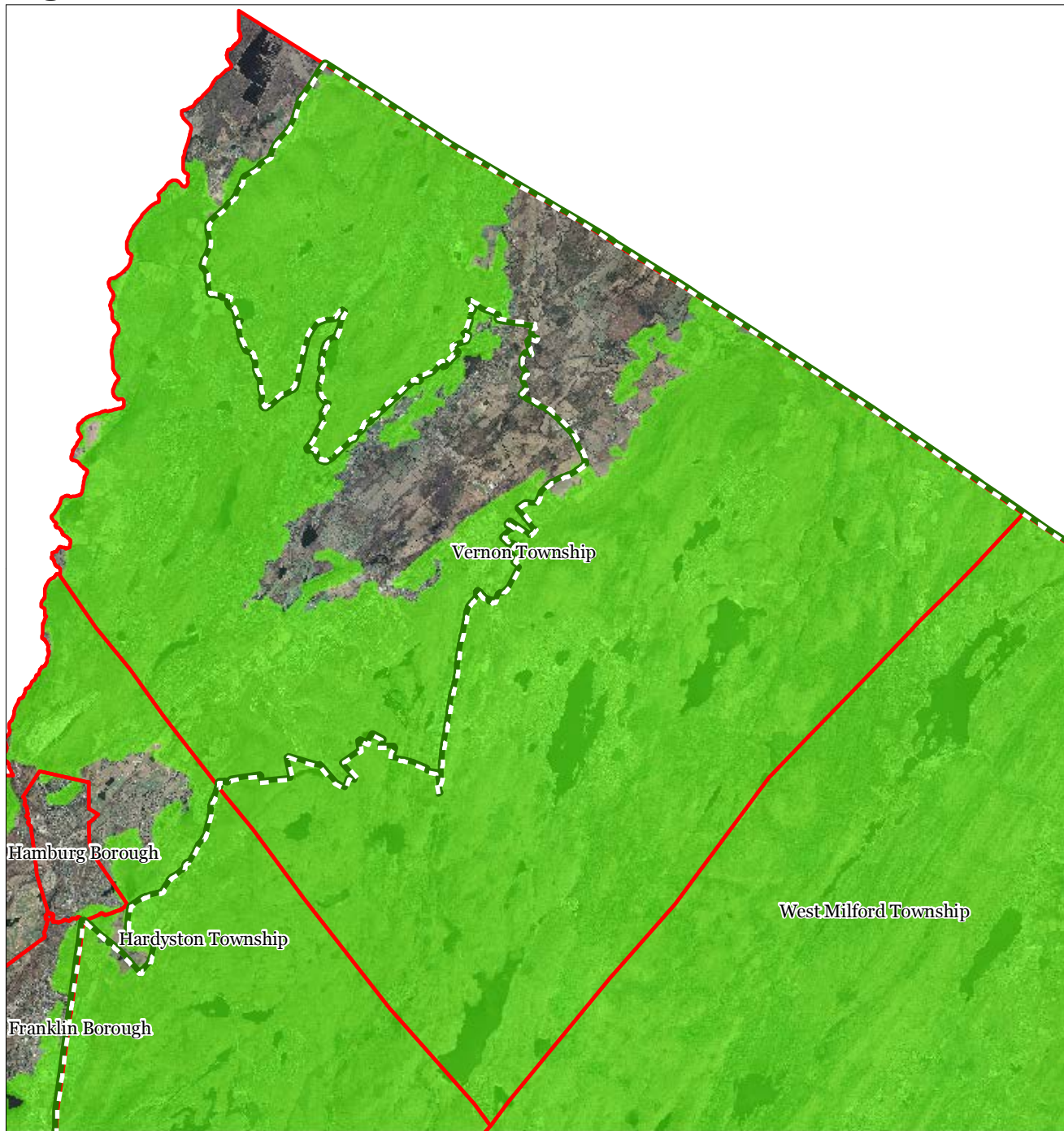
Vernon Township






1 inch = 1.48 miles

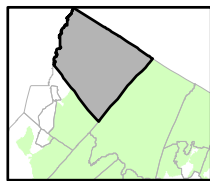
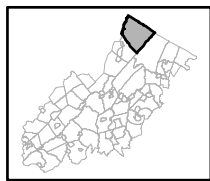


Figure 4: Forest Resource Area



-  Forest Resource Area
-  Preservation Area
-  Municipal Boundaries

Vernon Township



1 inch = 1.48 miles

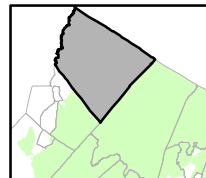
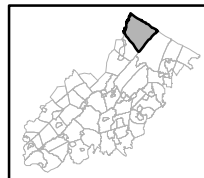


Figure 5: Total Forest Area



- Forested Areas
- Preservation Area
- Municipal Boundaries

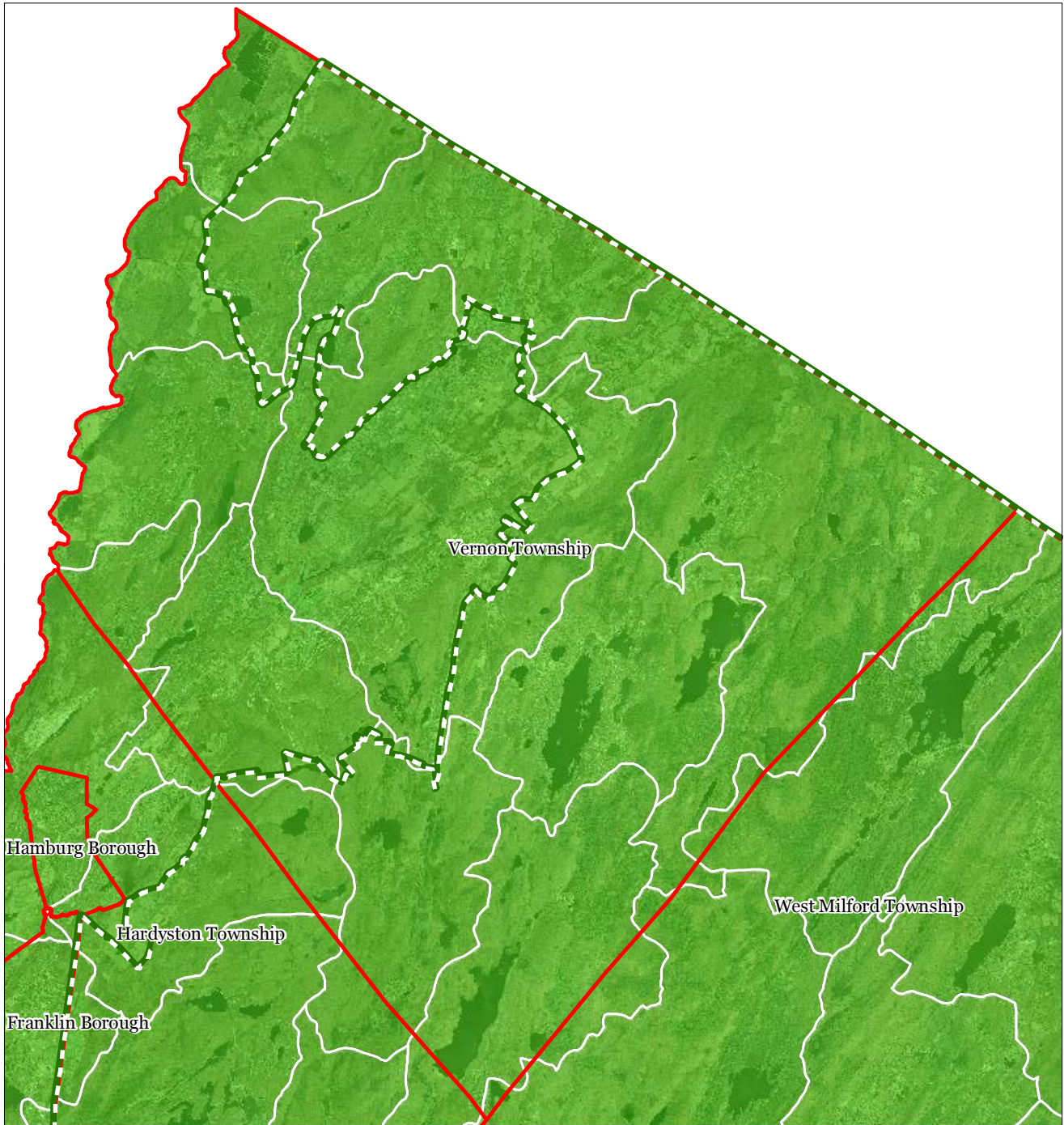
Vernon Township








1 inch = 1.48 miles



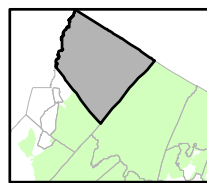
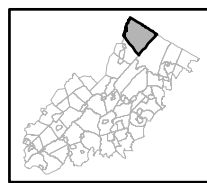
Figure 6: Forest Subwatersheds



Forest Integrity by HUC14 Subwatershed

-  Low
-  Moderate
-  High
-  Preservation Area
-  Municipal Boundaries

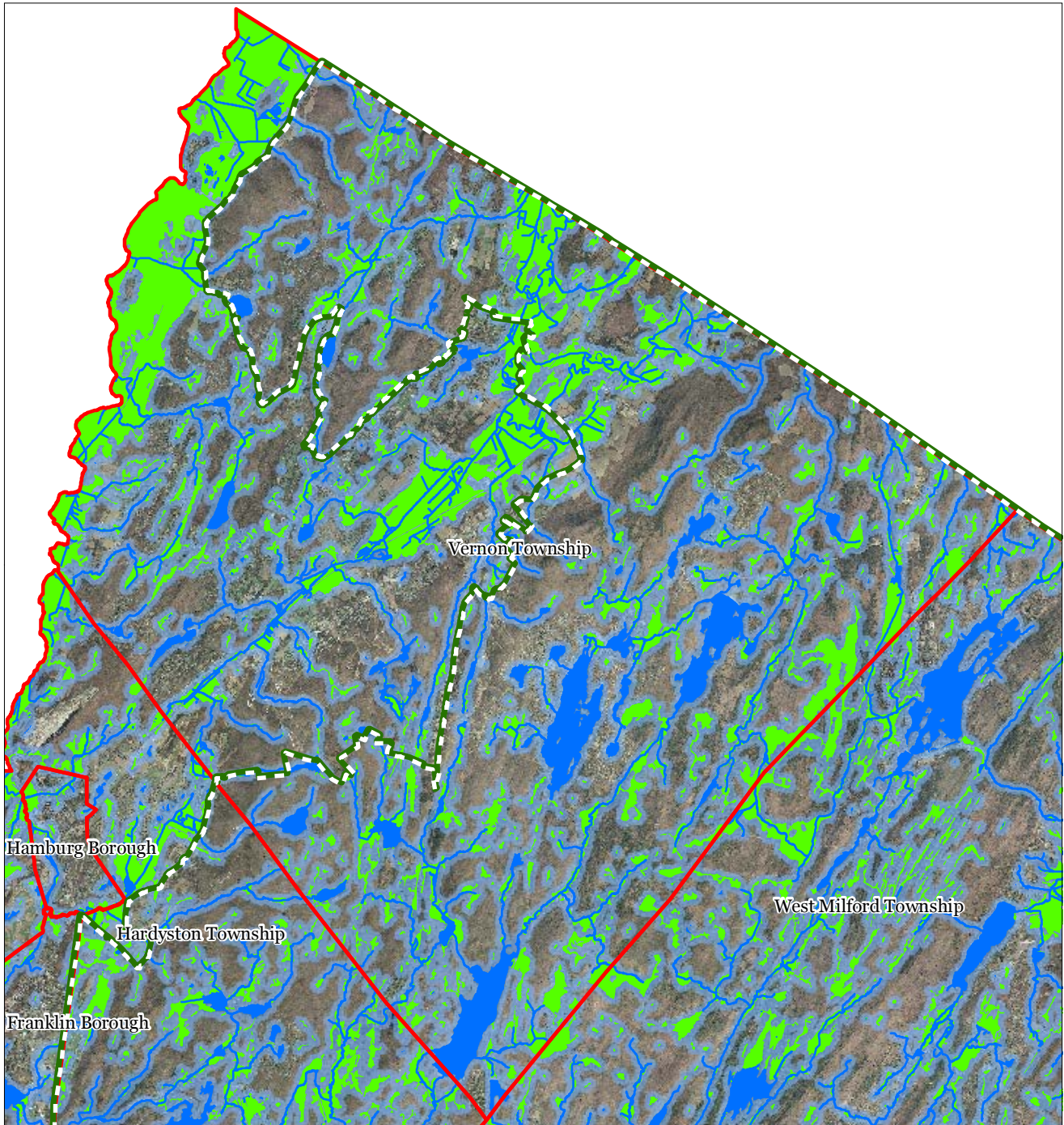
Vernon Township



1 inch = 1.48 miles

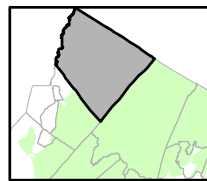
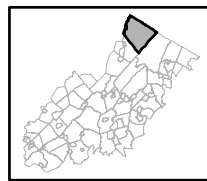


Figure 7: Highlands Open Waters



-  Highlands Open Water Buffers (300ft)
-  Streams
-  Wetlands
-  Lakes & Ponds
-  Preservation Area
-  Municipal Boundaries

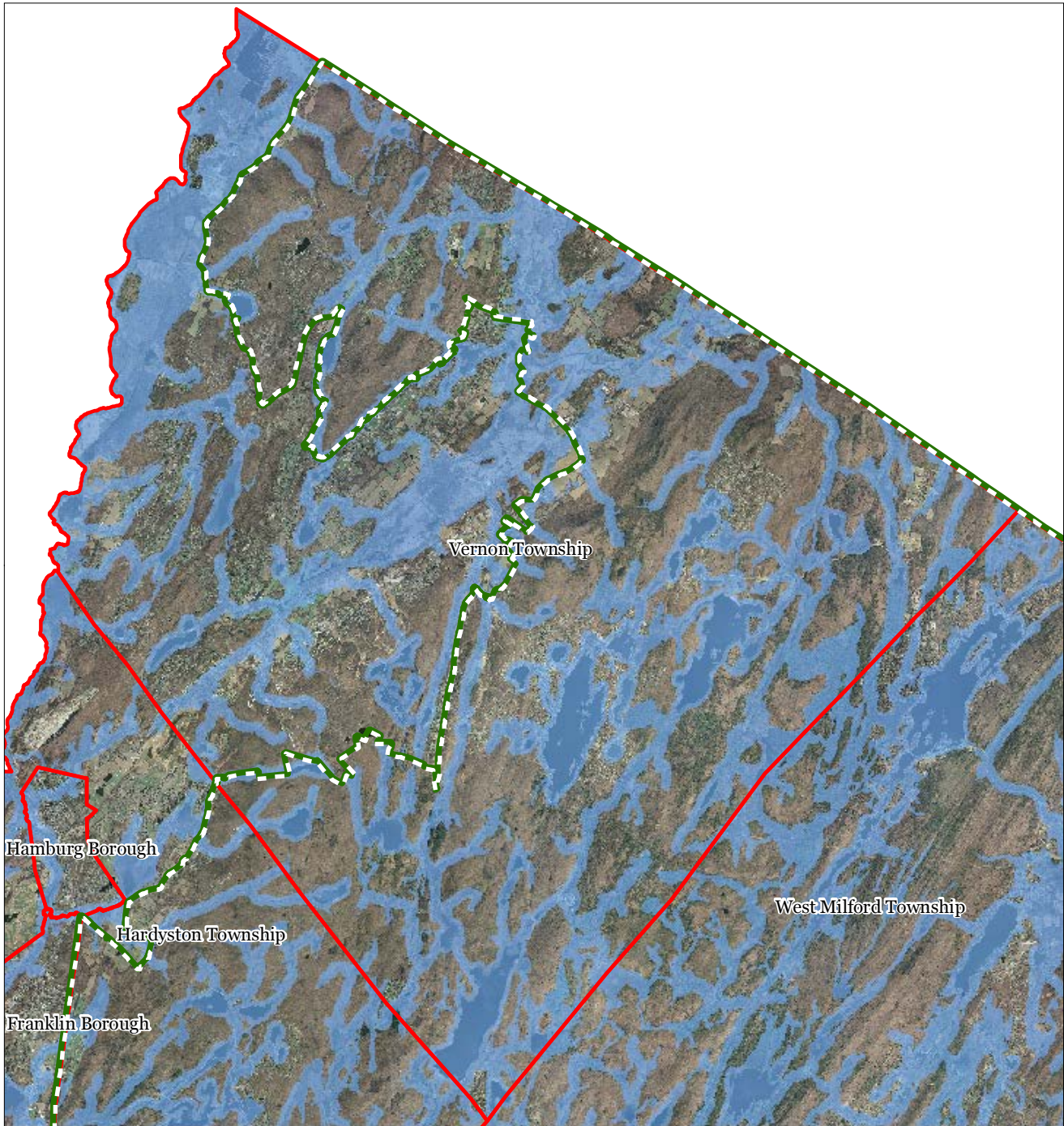
Vernon Township

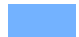




1 inch = 1.48 miles

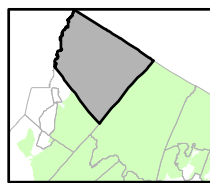
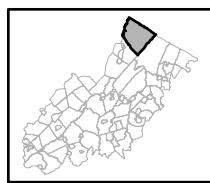


Figure 8: Highlands Riparian Area



-  Riparian Area
-  Preservation Area
-  Municipal Boundaries

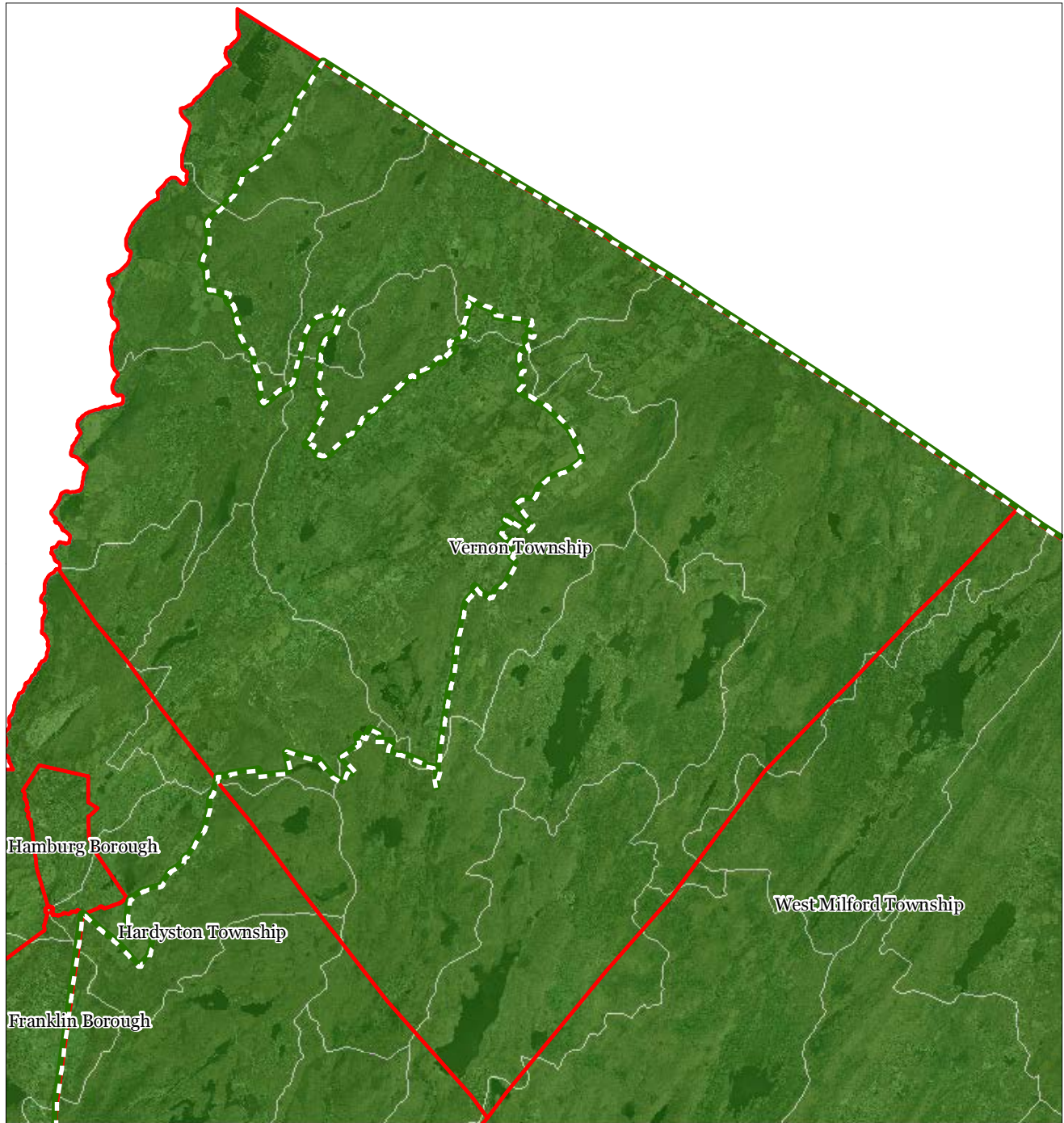
Vernon Township



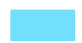


1 inch = 1.48 miles



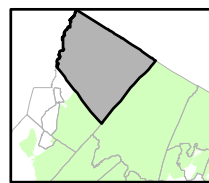
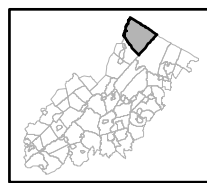
Figure 9: Watershed Values



Watershed Values by HUC14 Subwatershed

-  Low
-  Moderate
-  High
-  Preservation Area
-  Municipal Boundaries

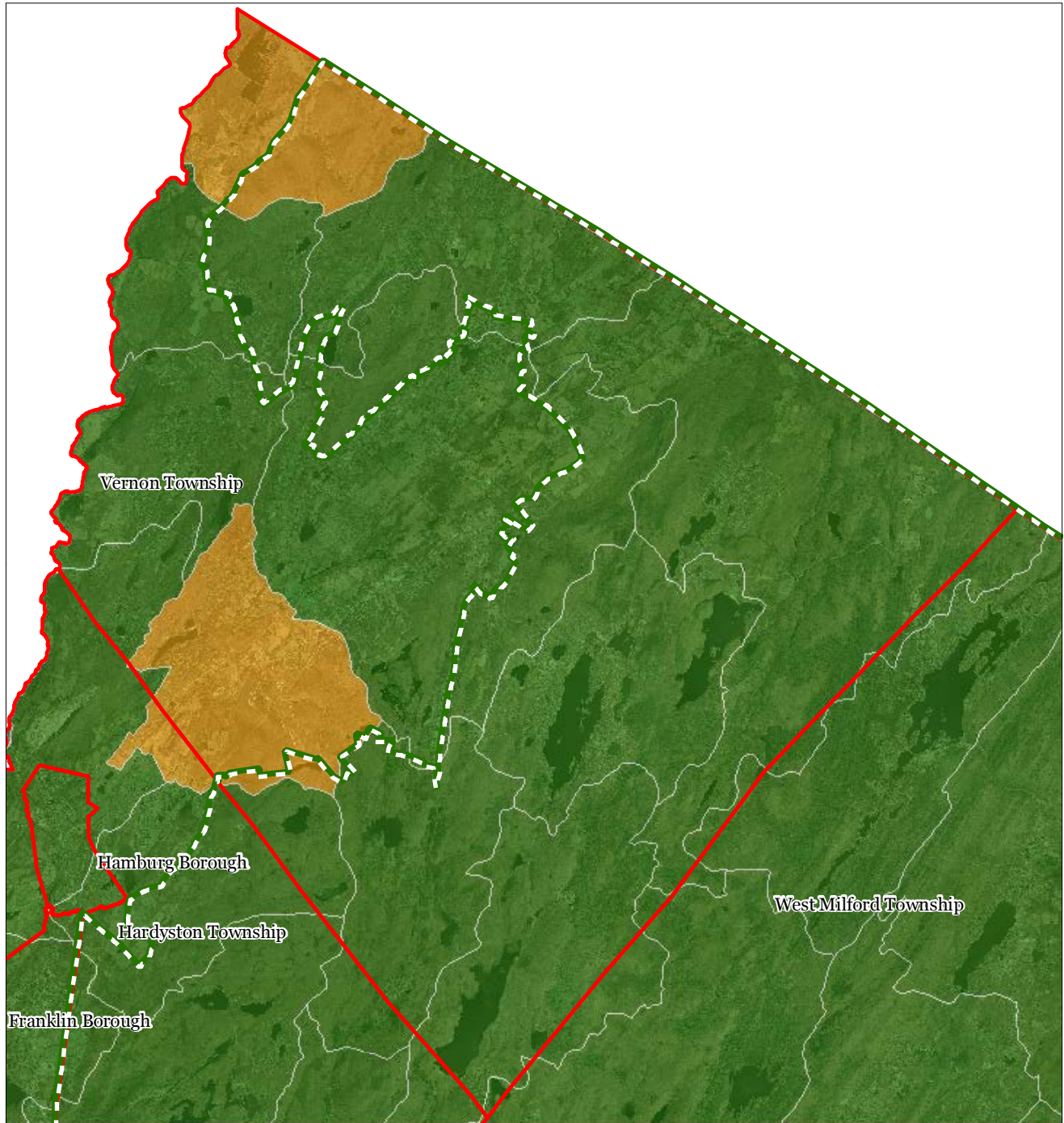
Vernon Township



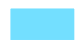




1 inch = 1.48 miles



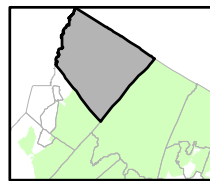
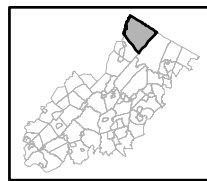
Figure 10: Riparian Integrity



Riparian Integrity by HUC14 Subwatershed

-  Low
-  Moderate
-  High
-  Preservation Area
-  Municipal Boundaries

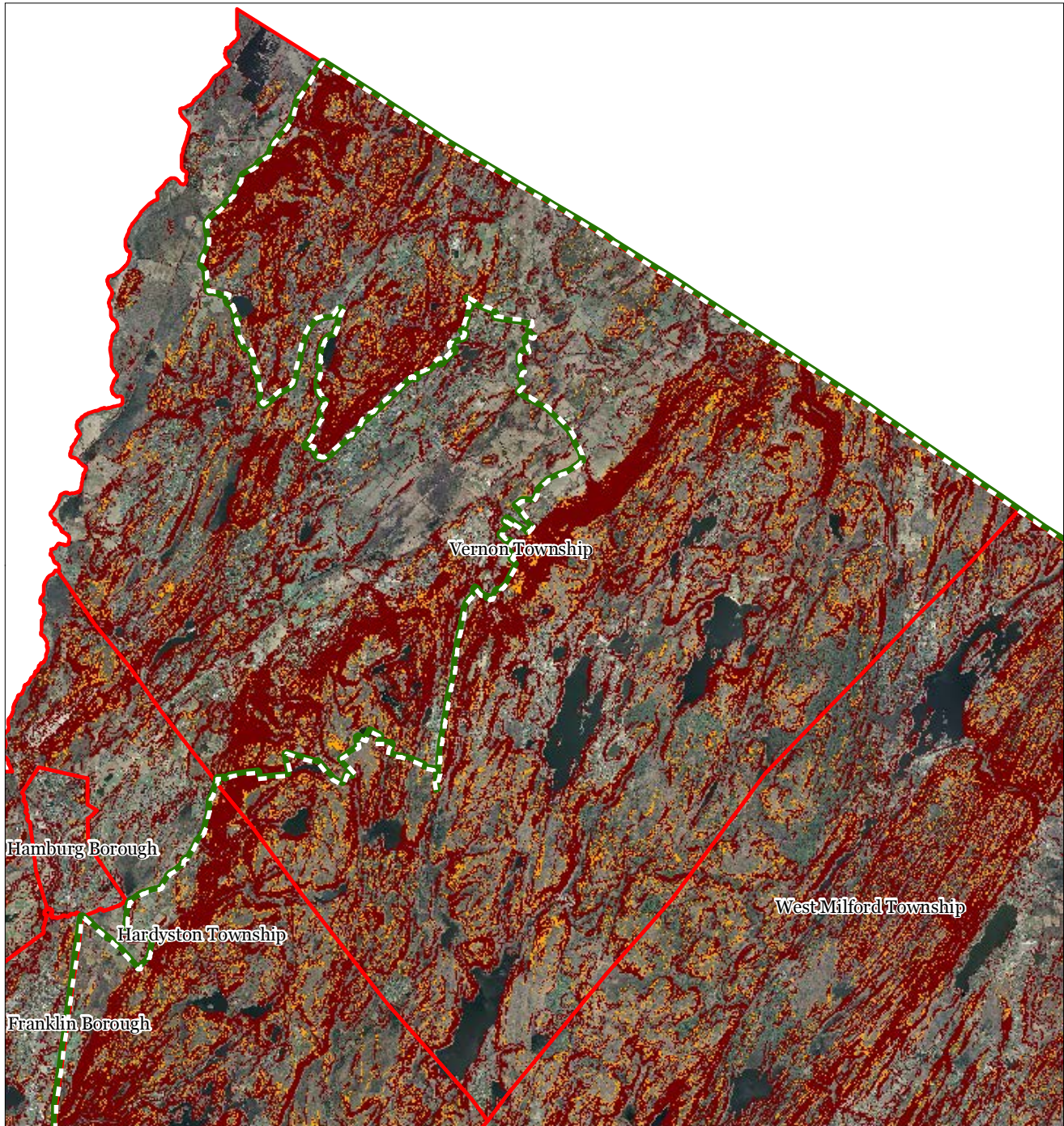
Vernon Township







1 inch = 1.48 miles

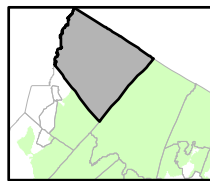
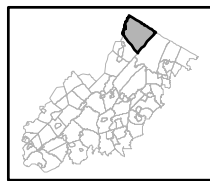


Figure 11: Steep Slope Protection Areas



- Steep Slope
-  Moderate
 -  Severe
 -  Preservation Area
 -  Municipal Boundaries

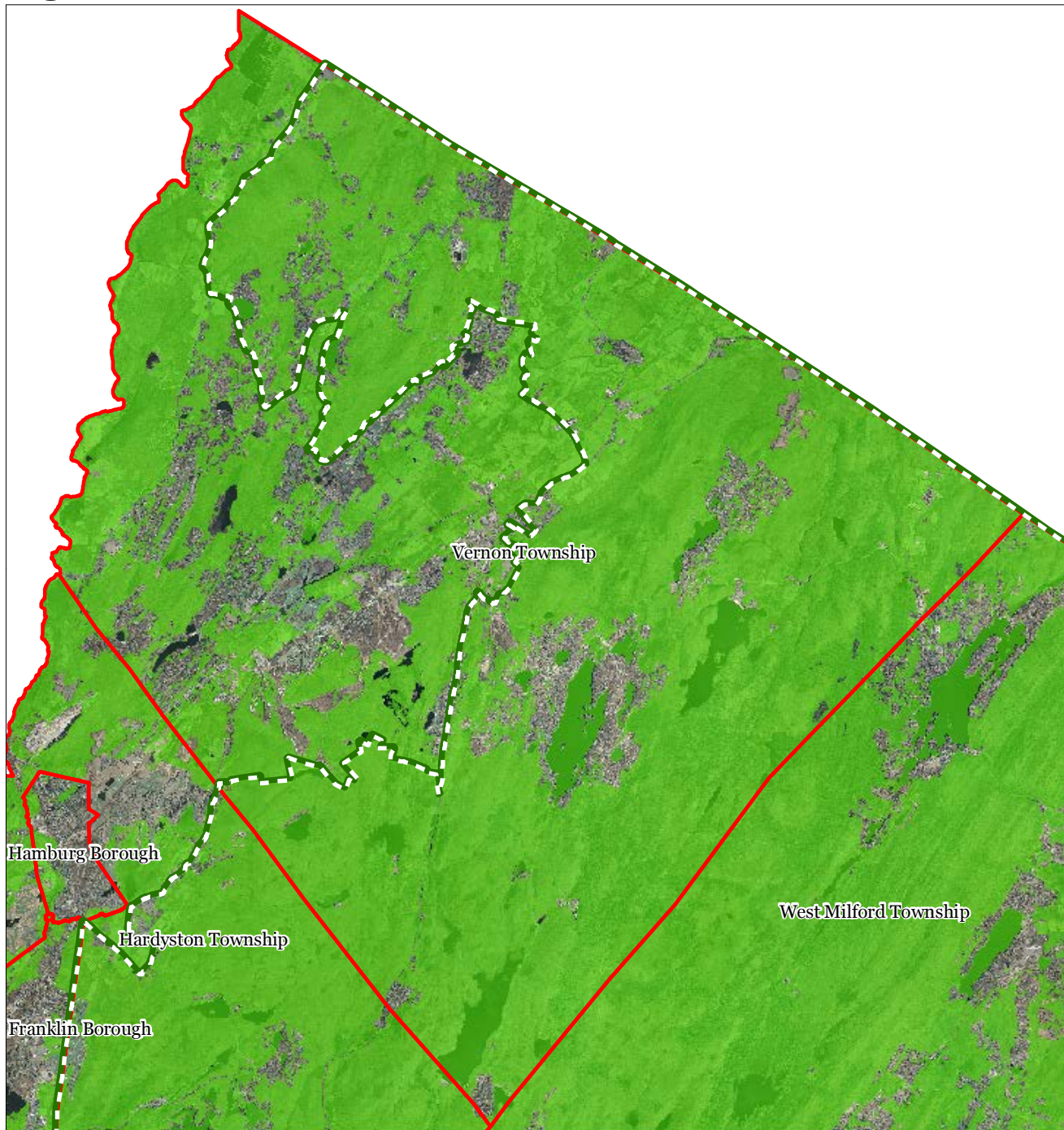
Vernon Township






1 inch = 1.48 miles

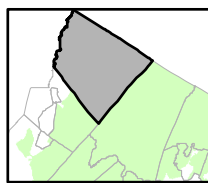
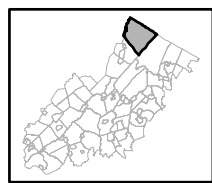


Figure 12: Critical Wildlife Habitat



-  Critical Wildlife Habitat
-  Preservation Area
-  Municipal Boundaries

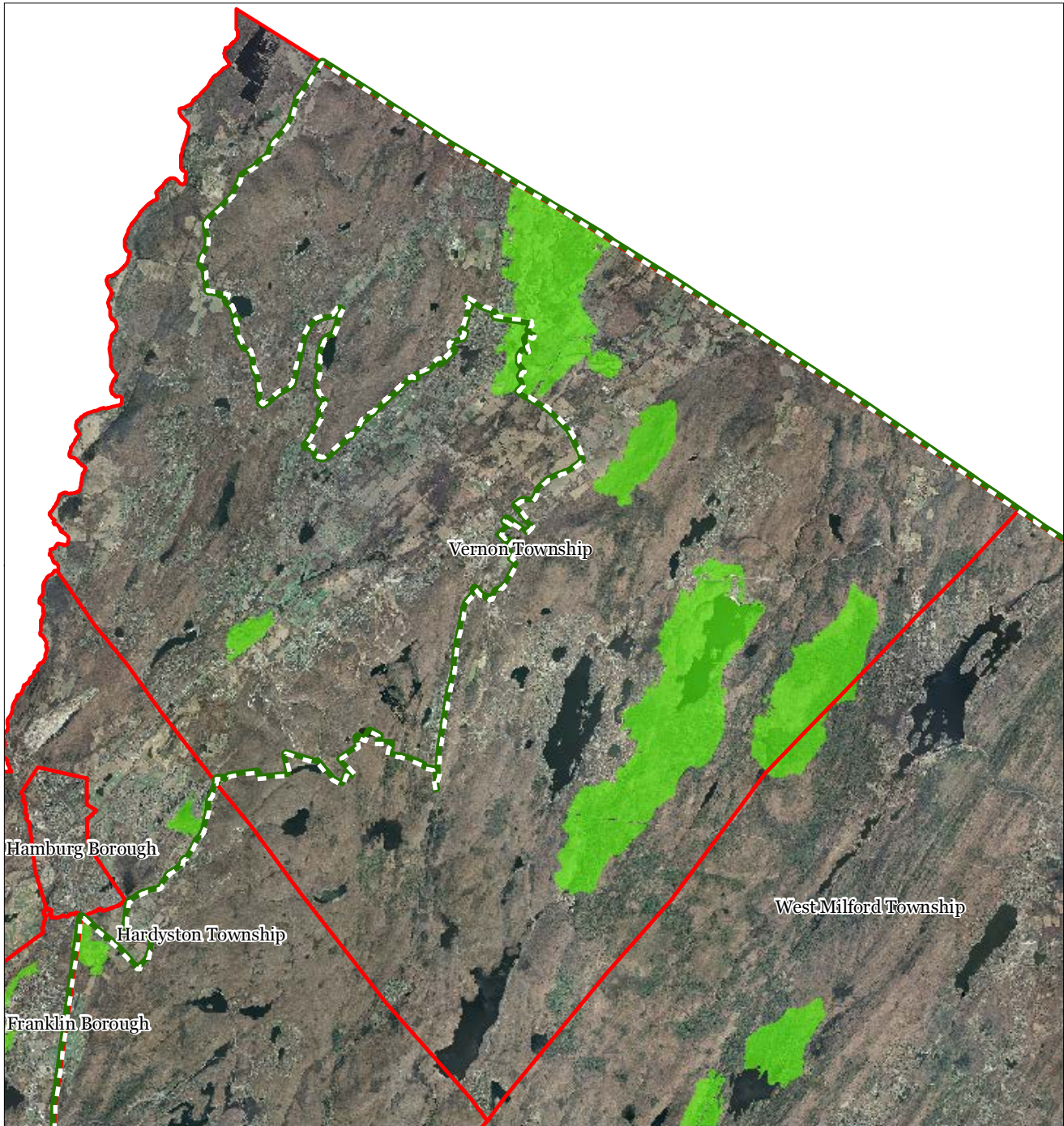
Vernon Township






1 inch = 1.48 miles

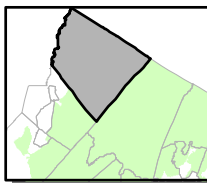
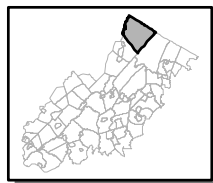


Figure 13: Significant Natural Area



-  Significant Natural Area
-  Preservation Area
-  Municipal Boundaries

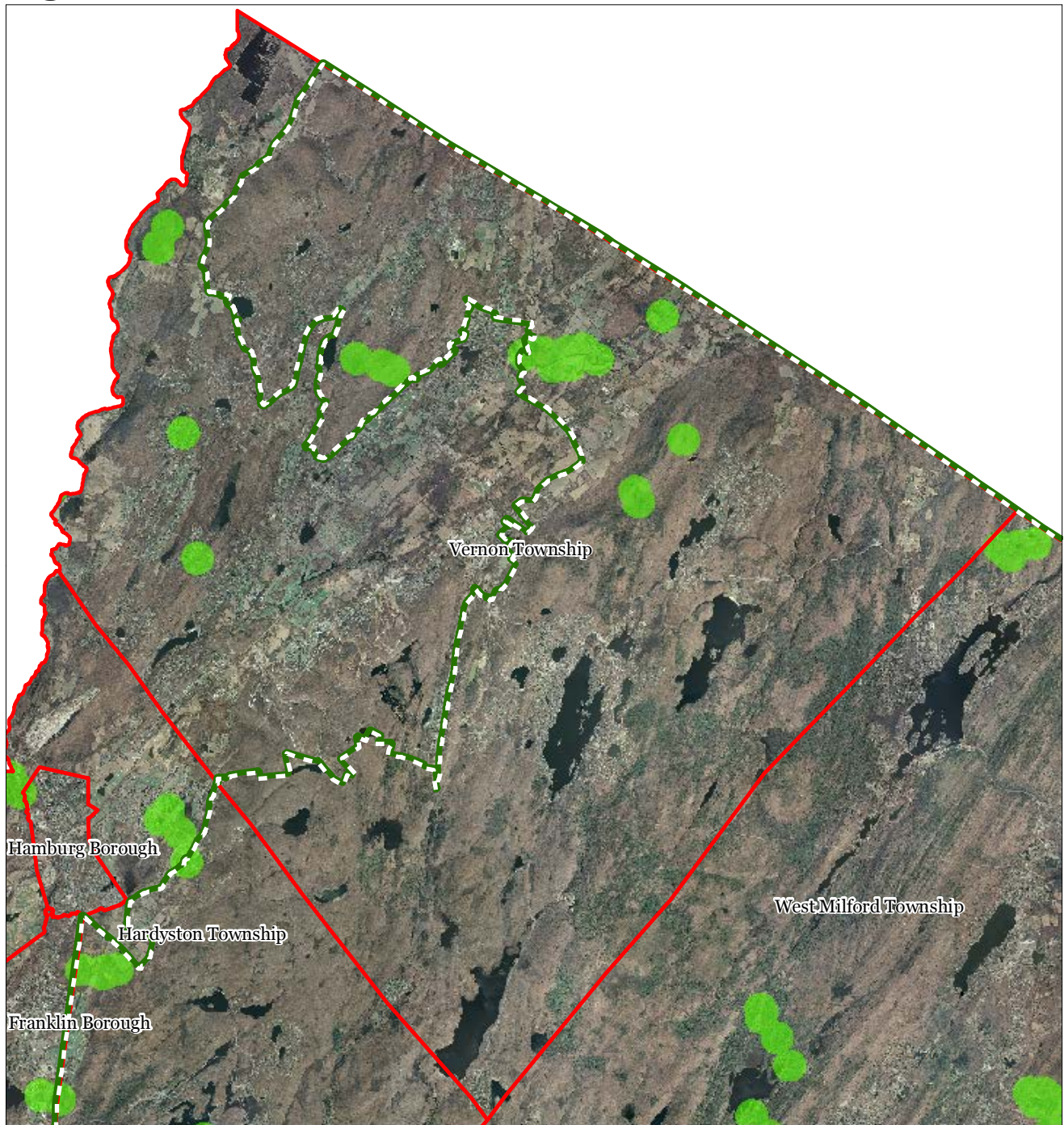
Vernon Township






1 inch = 1.48 miles

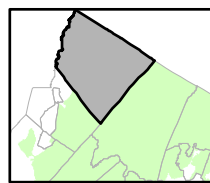
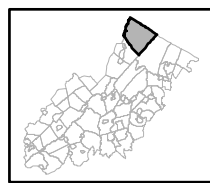


Figure 14: Vernal Pools



-  Vernal Pools + 1000ft Buffer
-  Preservation Area
-  Municipal Boundaries

Vernon Township

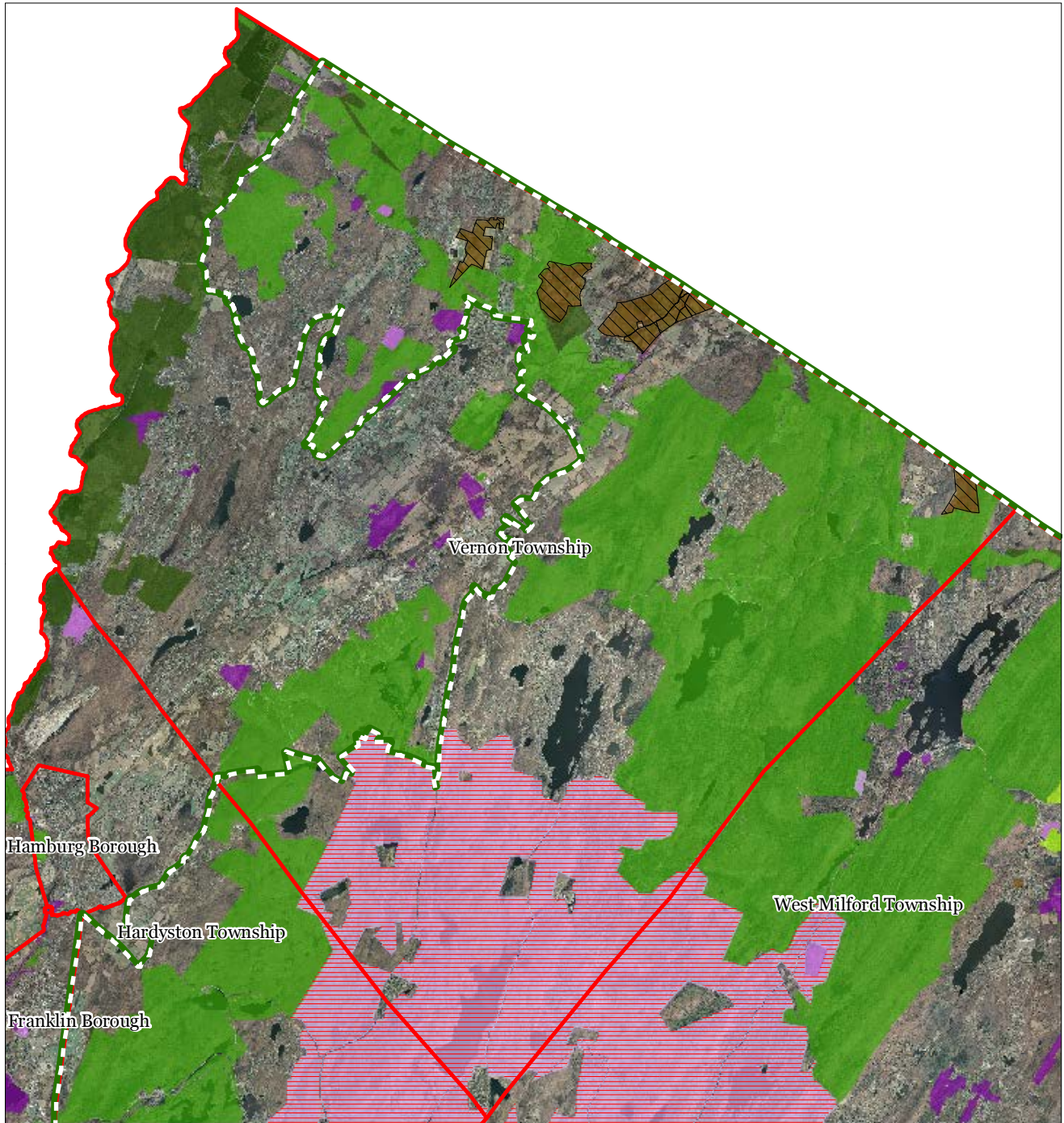


1 inch = 1.48 miles



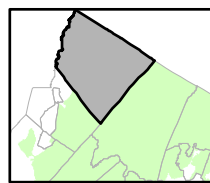
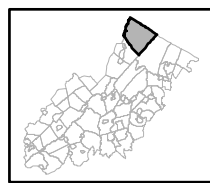
VERNON TOWNSHIP
 HIGHLANDS ENVIRONMENTAL RESOURCE INVENTORY

Figure 15: Preserved Lands



- | | |
|---|-------------------------------|
| Preserved Lands | Conservation Easements |
| Federal Open Space | Green Acres |
| State Open Space | SADC Easements |
| County Open Space | SADC Final |
| Municipal Open Space | SADC Preserved |
| Non-Profit/Private Open Space | Municipal Boundaries |
| Water Supply Watershed Lands | Preservation Area |
| Preserved Farmland | |
| Highlands Transfer of Development Lands | |

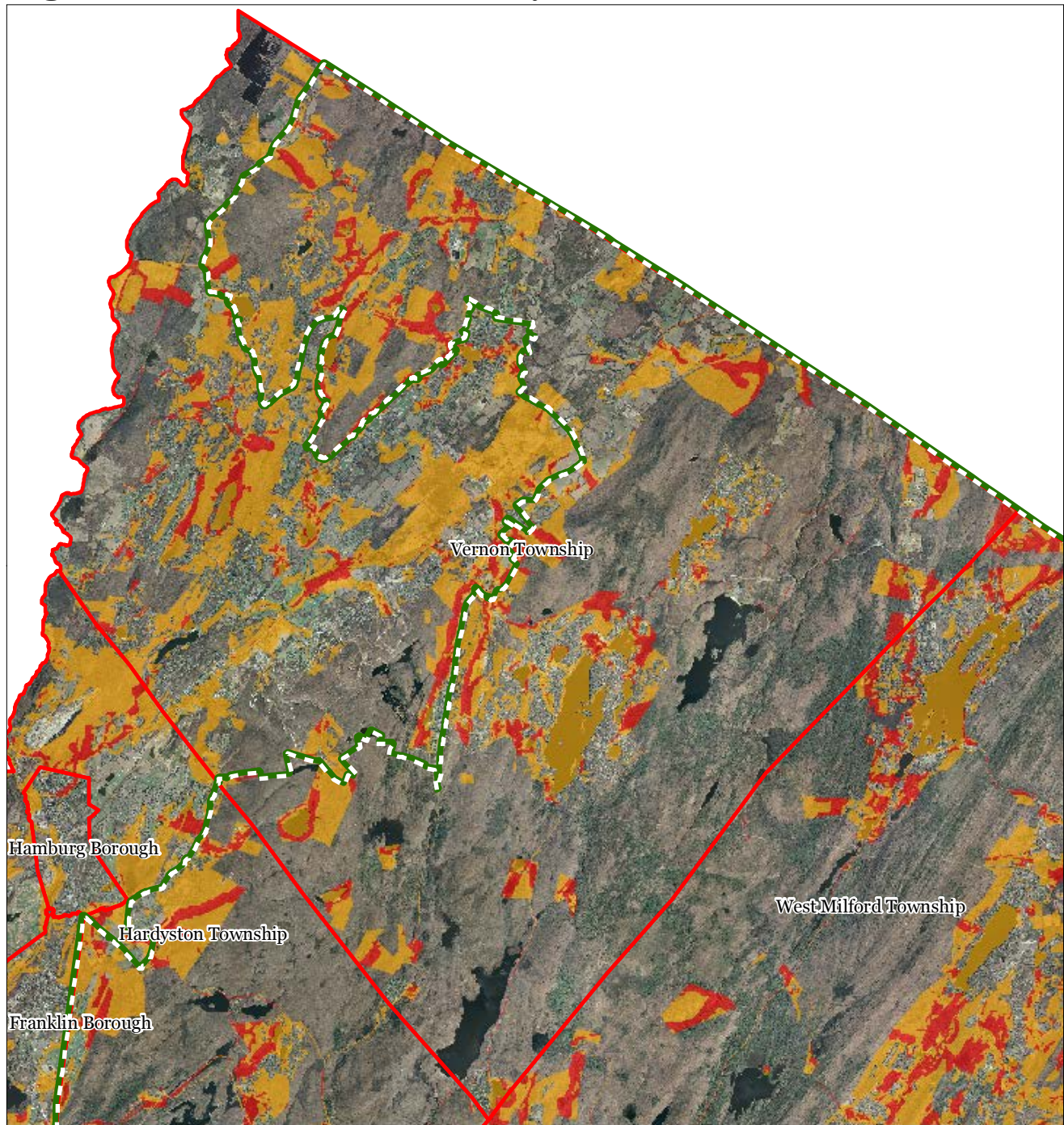
Vernon Township







1 inch = 1.48 miles



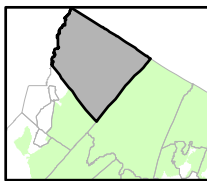
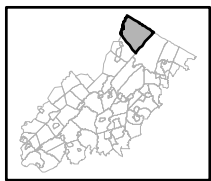
Figure 16: Conservation Priority Area



Conservation Priority Area

-  Moderate
-  High
-  Preservation Area
-  Municipal Boundaries

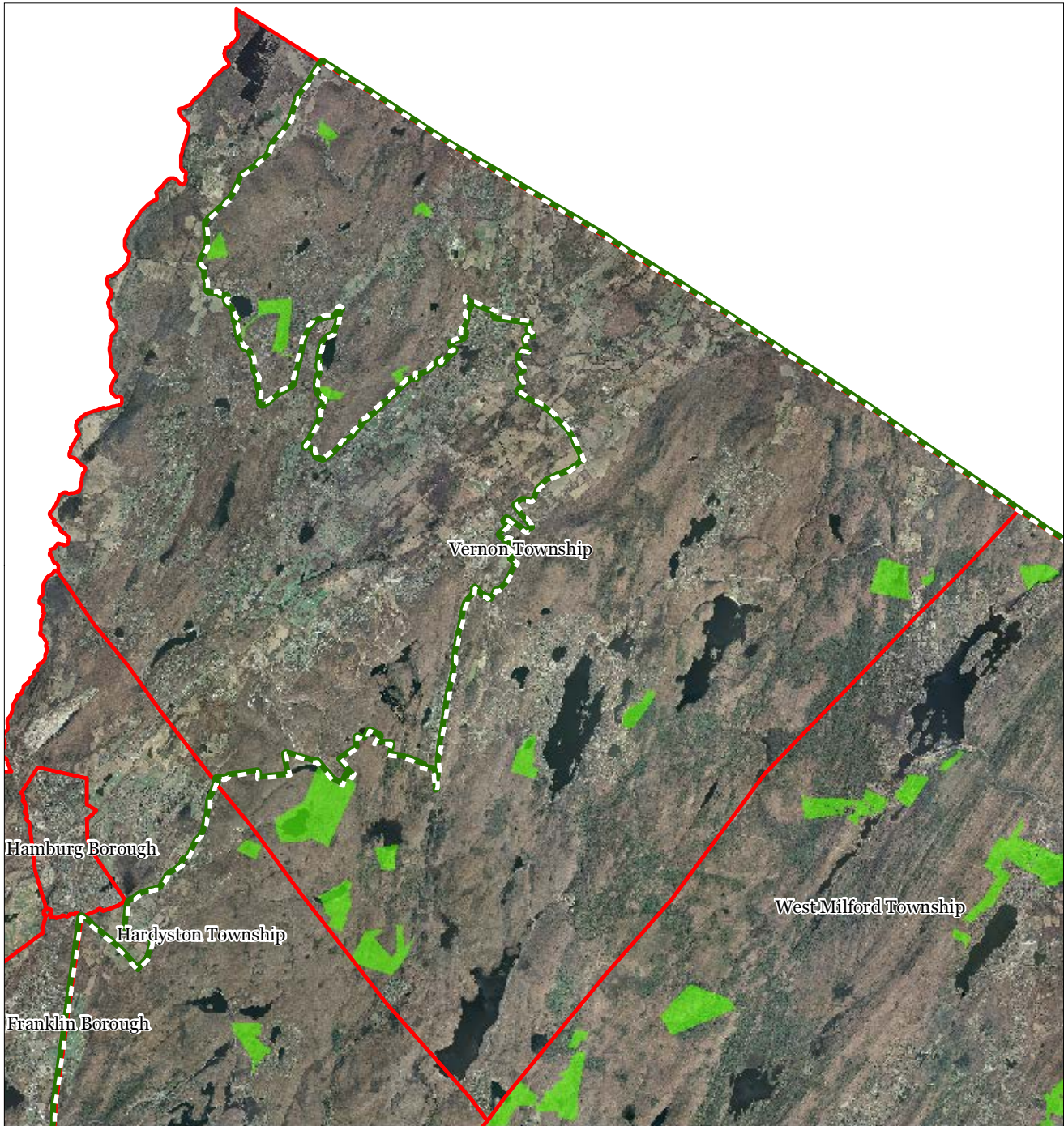
Vernon Township






1 inch = 1.48 miles

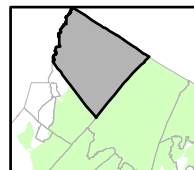
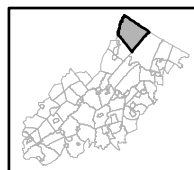


Figure 17: Special Environmental Zone



-  Special Environmental Zone
-  Preservation Area
-  Municipal Boundaries

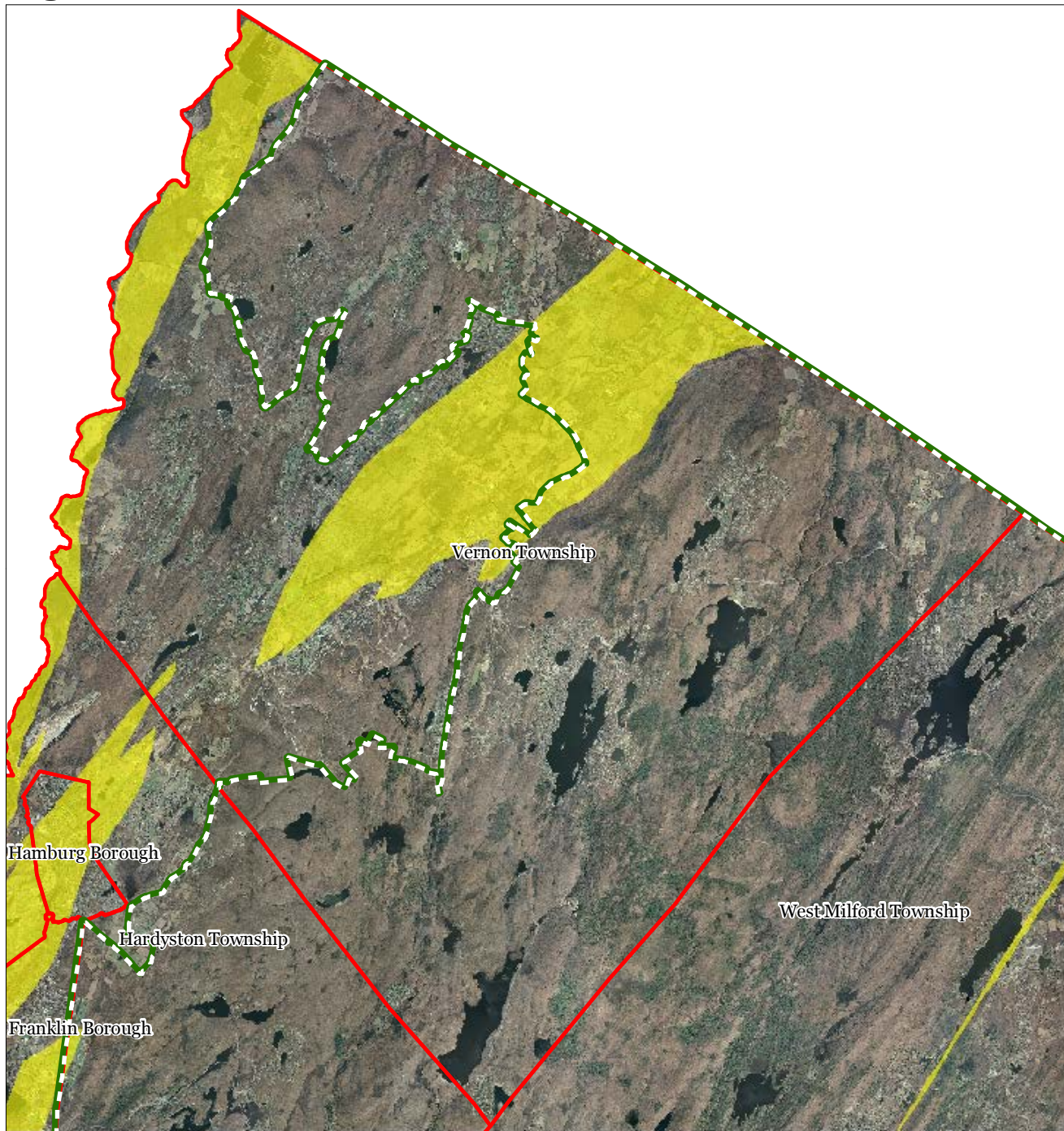
Vernon Township






1 inch = 1.479 miles

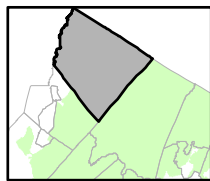
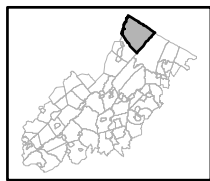


Figure 18: Carbonate Rock Area



-  Carbonate Rock Area
-  Preservation Area
-  Municipal Boundaries

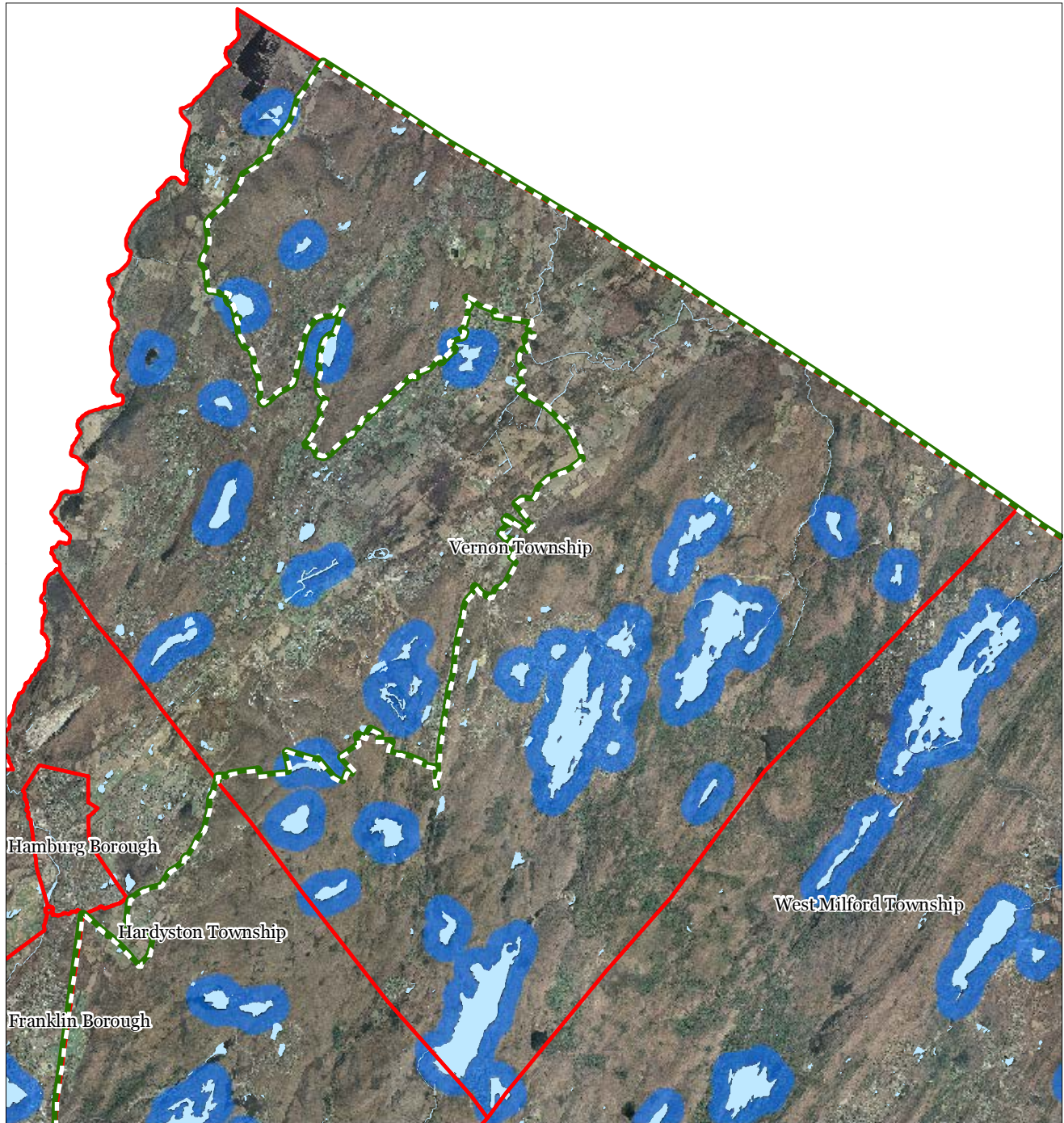
Vernon Township

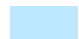





1 inch = 1.48 miles

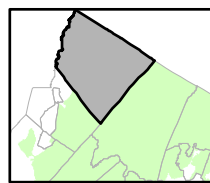
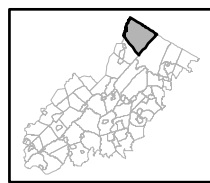


Figure 19: Lake Management Area



-  Lakes & Ponds
-  Lake Management Area
-  Preservation Area
-  Municipal Boundaries

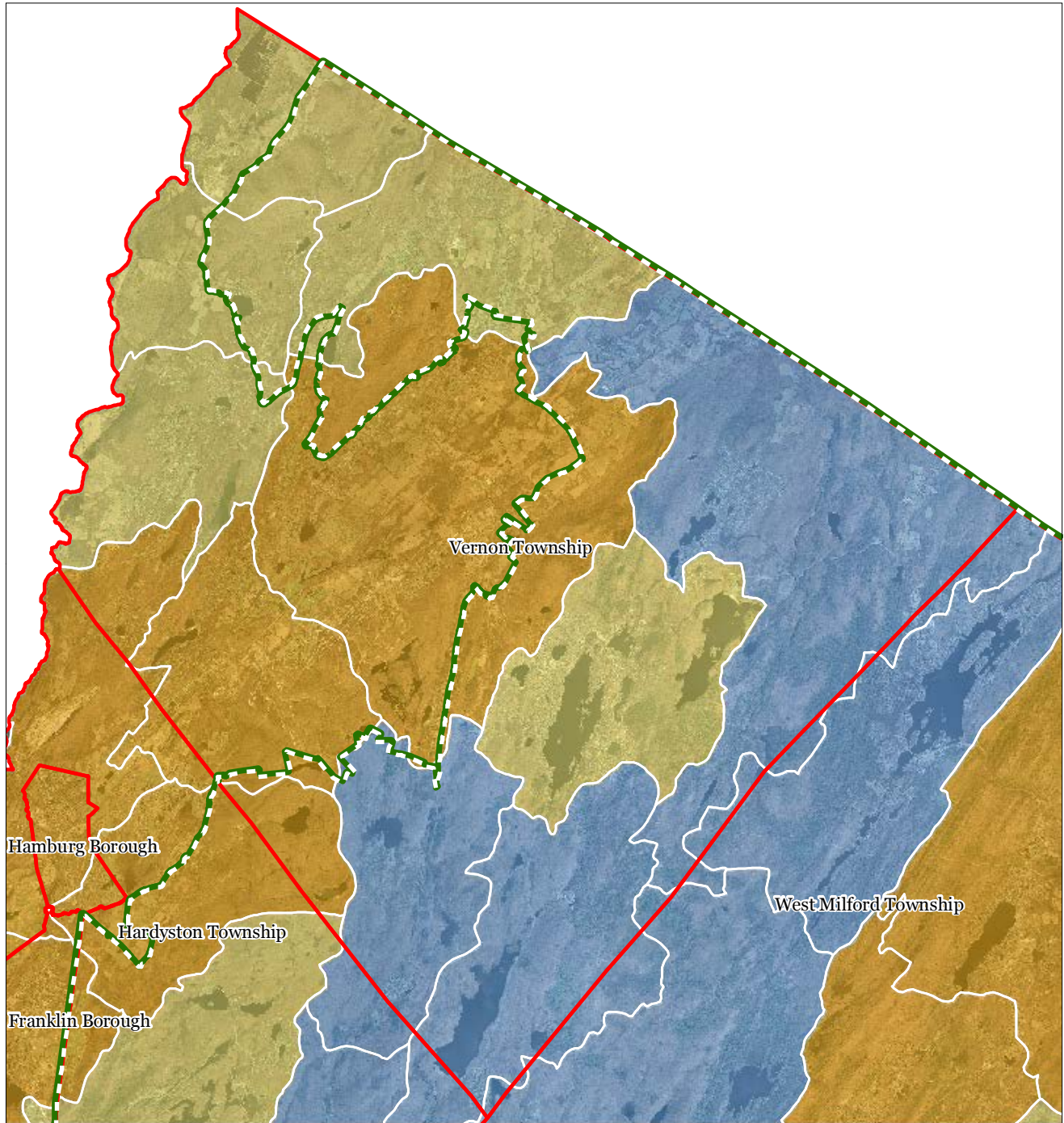
Vernon Township



1 inch = 1.48 miles



Figure 20: Net Water Availability



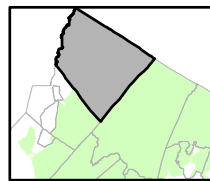
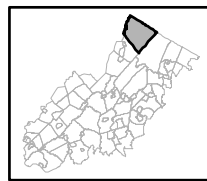
Net Water Availability By HUC14

Million Gallons Per Day (MGD)

- 0.10 - 0.39
- 0.05 - 0.09
- 0.00 - 0.04
- 0.09 - 0.00
- 0.99 - -0.10
- 7.10 - -1.00

- Preservation Area
- Municipal Boundaries

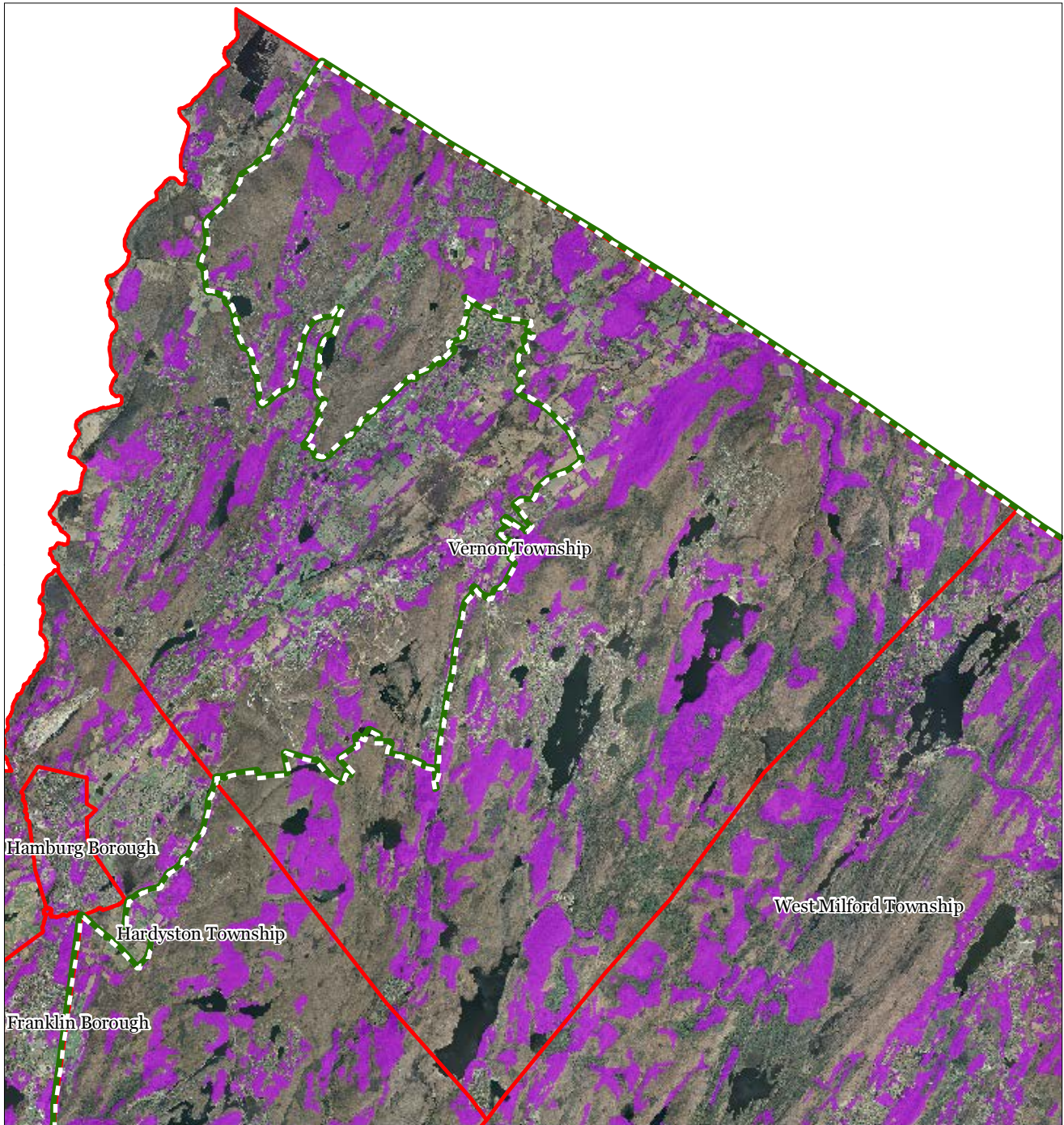
Vernon Township






1 inch = 1.48 miles

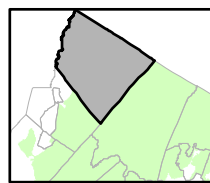
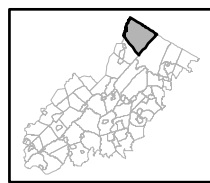


Figure 21: Prime Ground Water Recharge Areas



-  Prime Groundwater Recharge Areas
-  Preservation Area
-  Municipal Boundaries

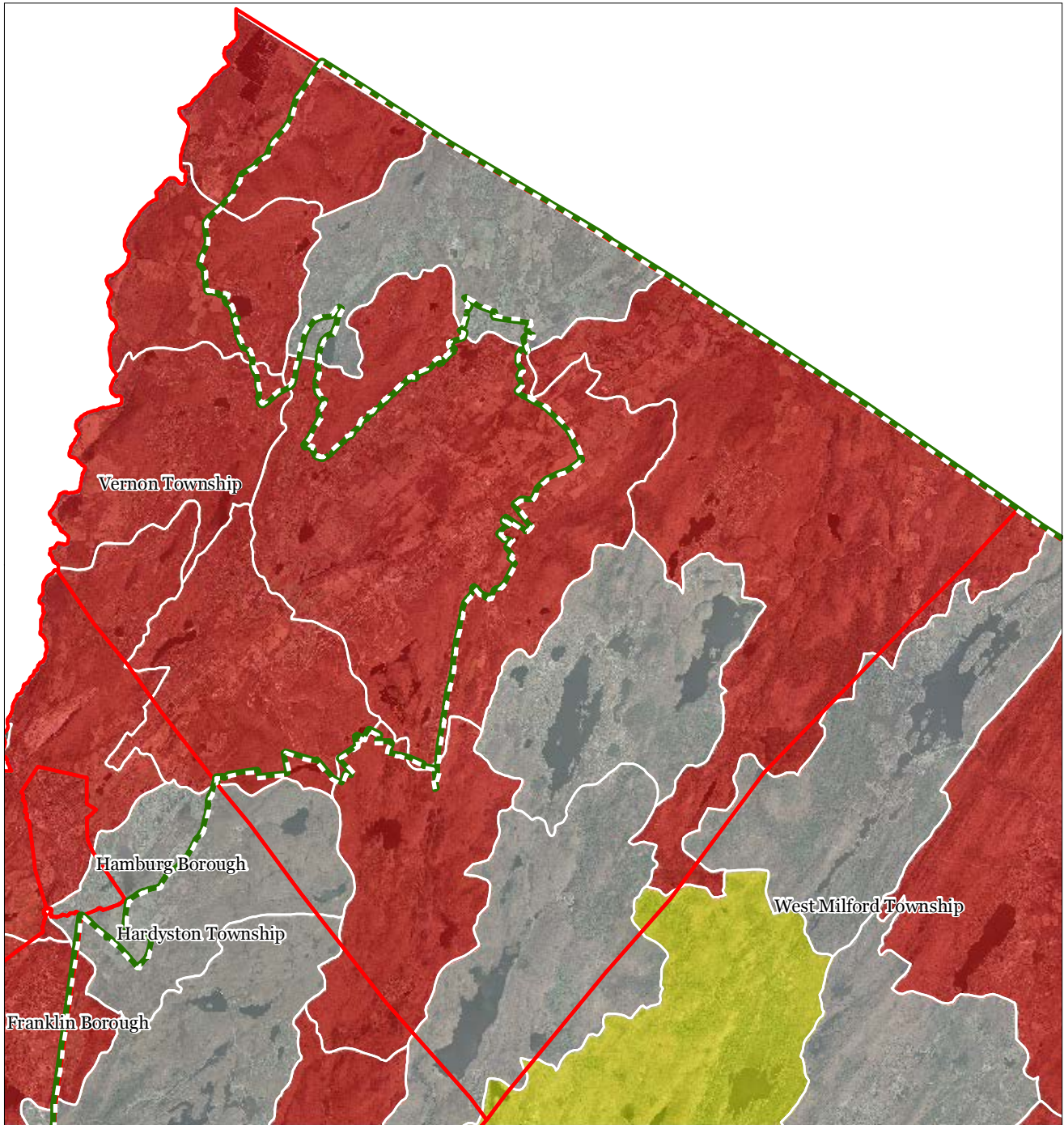
Vernon Township



1 inch = 1.48 miles



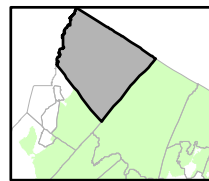
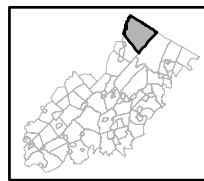
Figure 22: HUC 14s on NJDEP Impaired Waters List



Impaired Waters Overall Assessment by HUC14 Subwatershed

- Non Impacted
- Insufficient Data Available
- Moderate
- Water Quality Impaired
- Preservation Area
- Municipal Boundaries

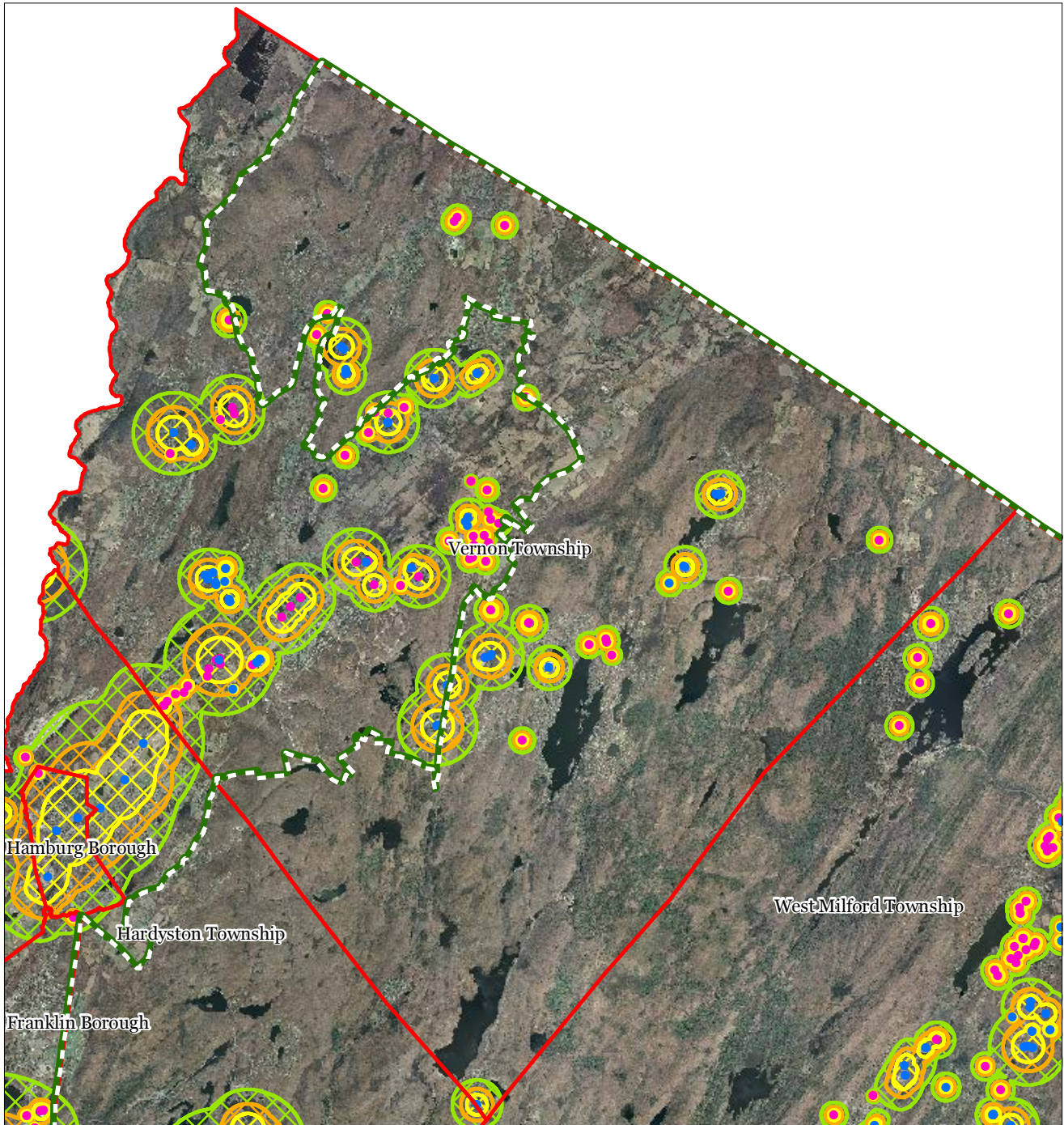
Vernon Township



1 inch = 1.48 miles



Figure 23: Wellhead Protection Areas



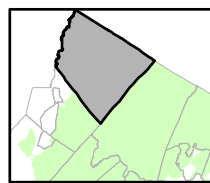
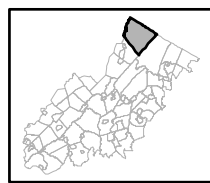
- Public Community Wells
- Public Non-Community Wells

Wellhead Protection Areas

- 2-Year Tier
- 5-Year Tier
- 12-Year Tier

- Preservation Area
- Municipal Boundaries

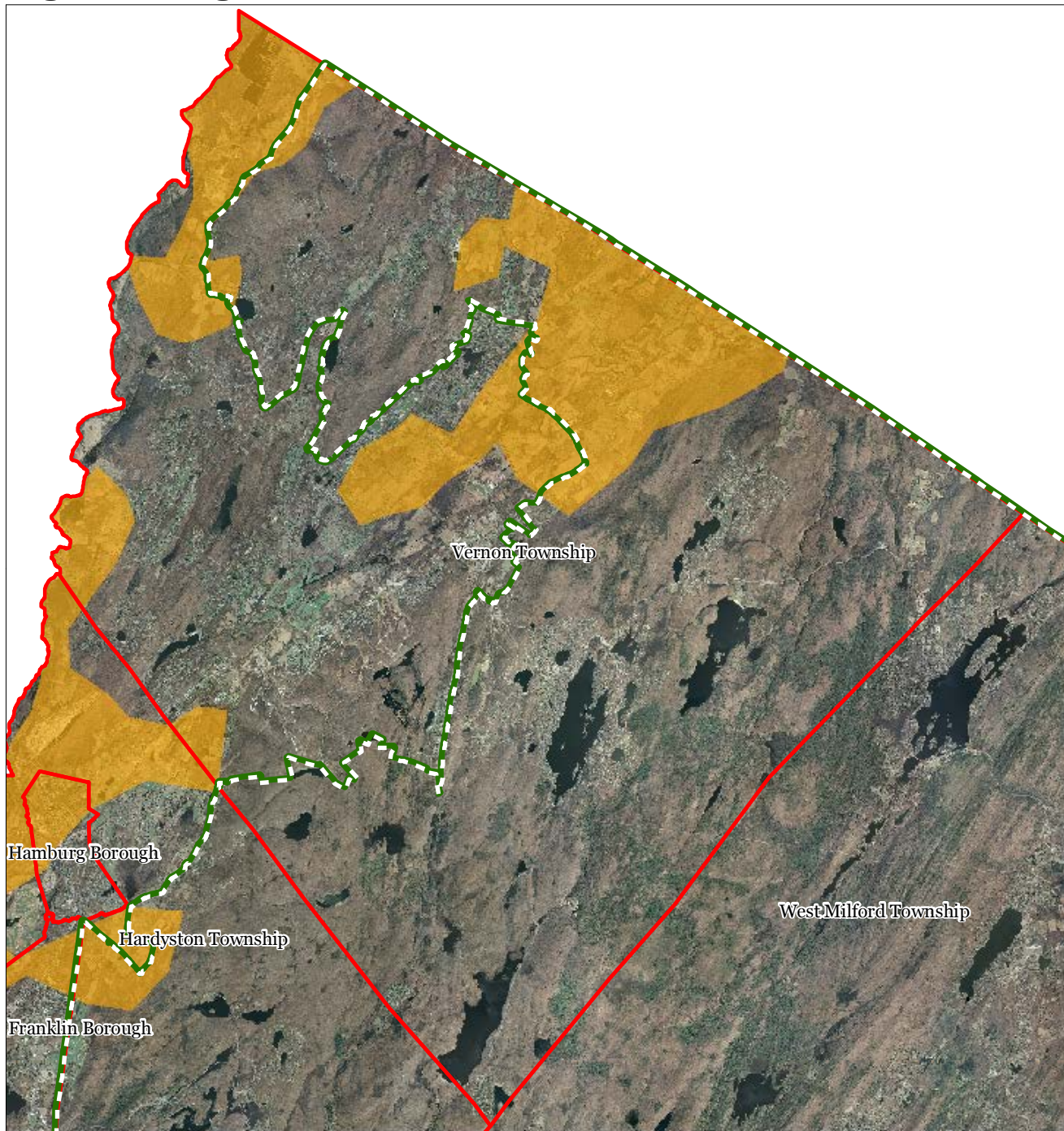
Vernon Township






1 inch = 1.48 miles

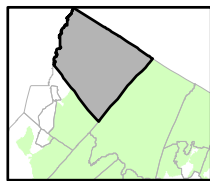
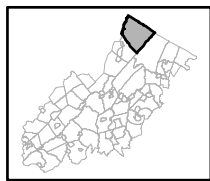


Figure 24: Agricultural Resource Area



-  Agricultural Resource Area
-  Preservation Area
-  Municipal Boundaries

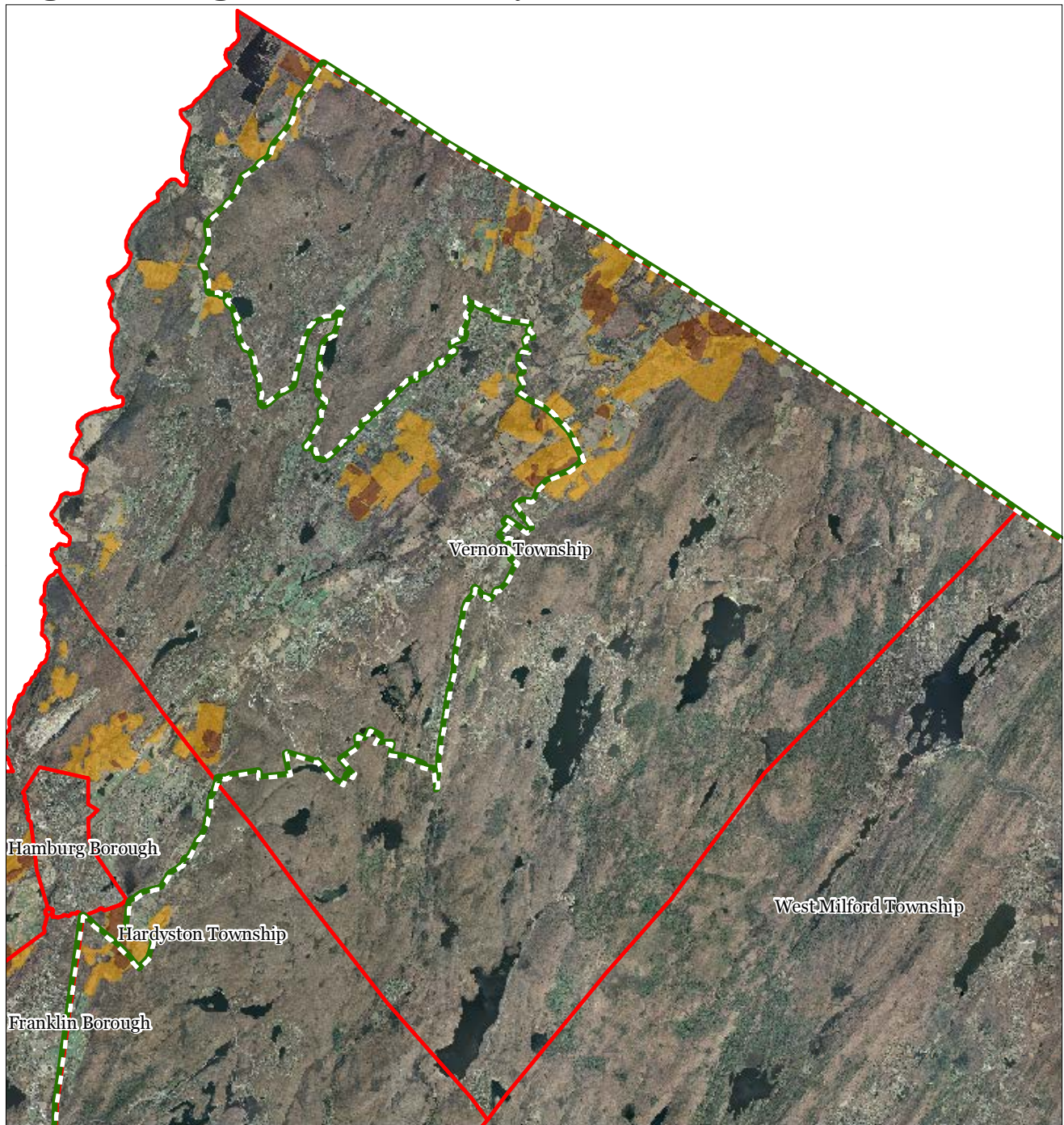
Vernon Township







1 inch = 1.48 miles



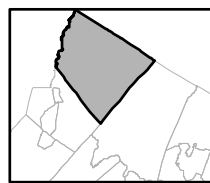
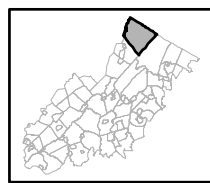
Figure 25: Agricultural Priority Area



Agricultural Priority Area

-  Moderate
-  High
-  Preservation Area
-  Municipal Boundaries

Vernon Township

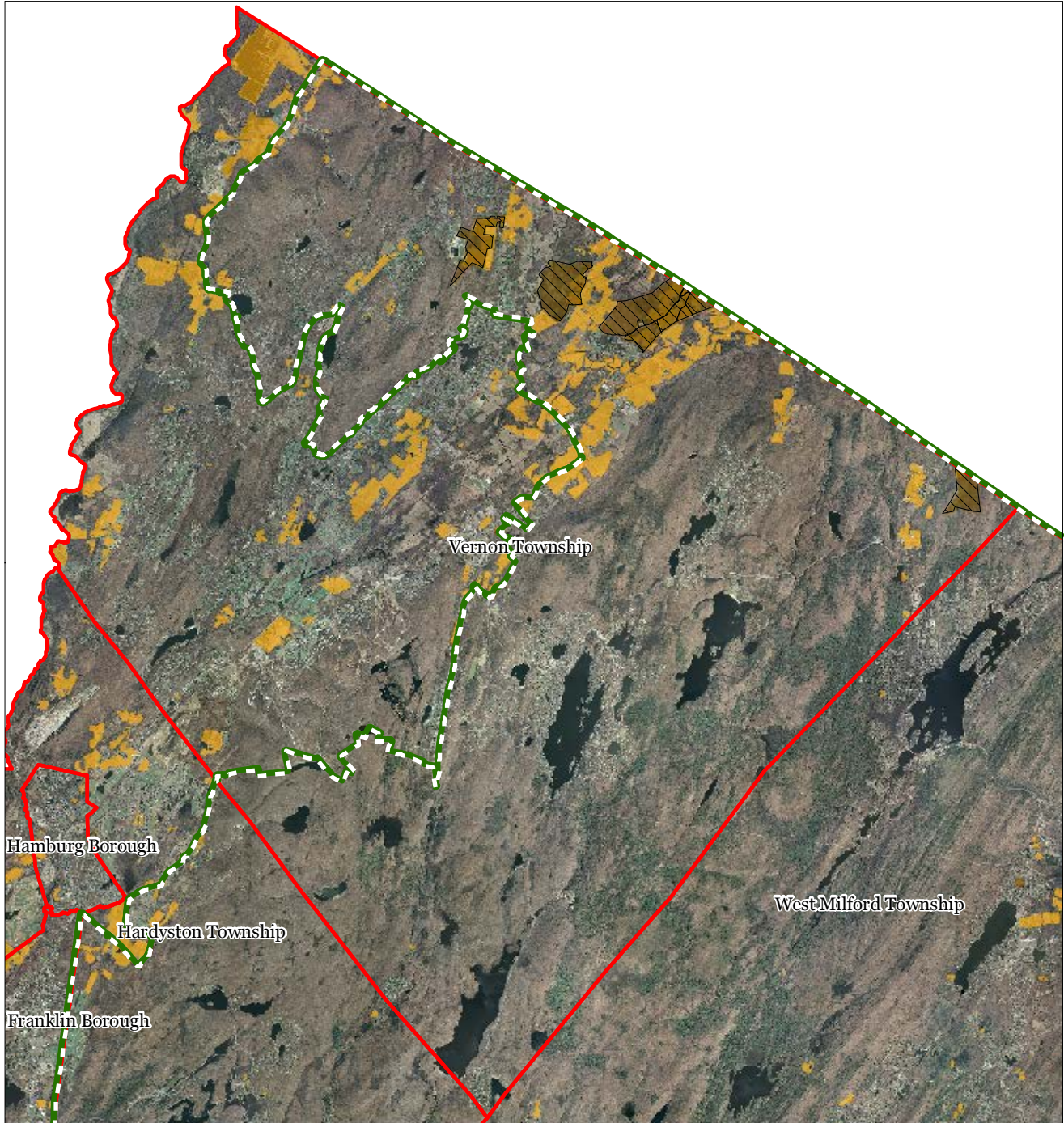


1 inch = 1.48 miles



VERNON TOWNSHIP
 HIGHLANDS ENVIRONMENTAL RESOURCE INVENTORY

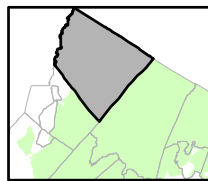
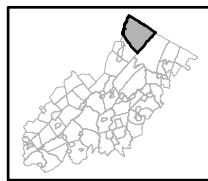
Figure 26: Preserved Farms, SADC Easements, All Agricultural Uses



SADC Easements

-  SADC Final
-  SADC Preserved
-  Preserved Farmland
-  Agriculture Uses
-  Preservation Area
-  Municipal Boundaries

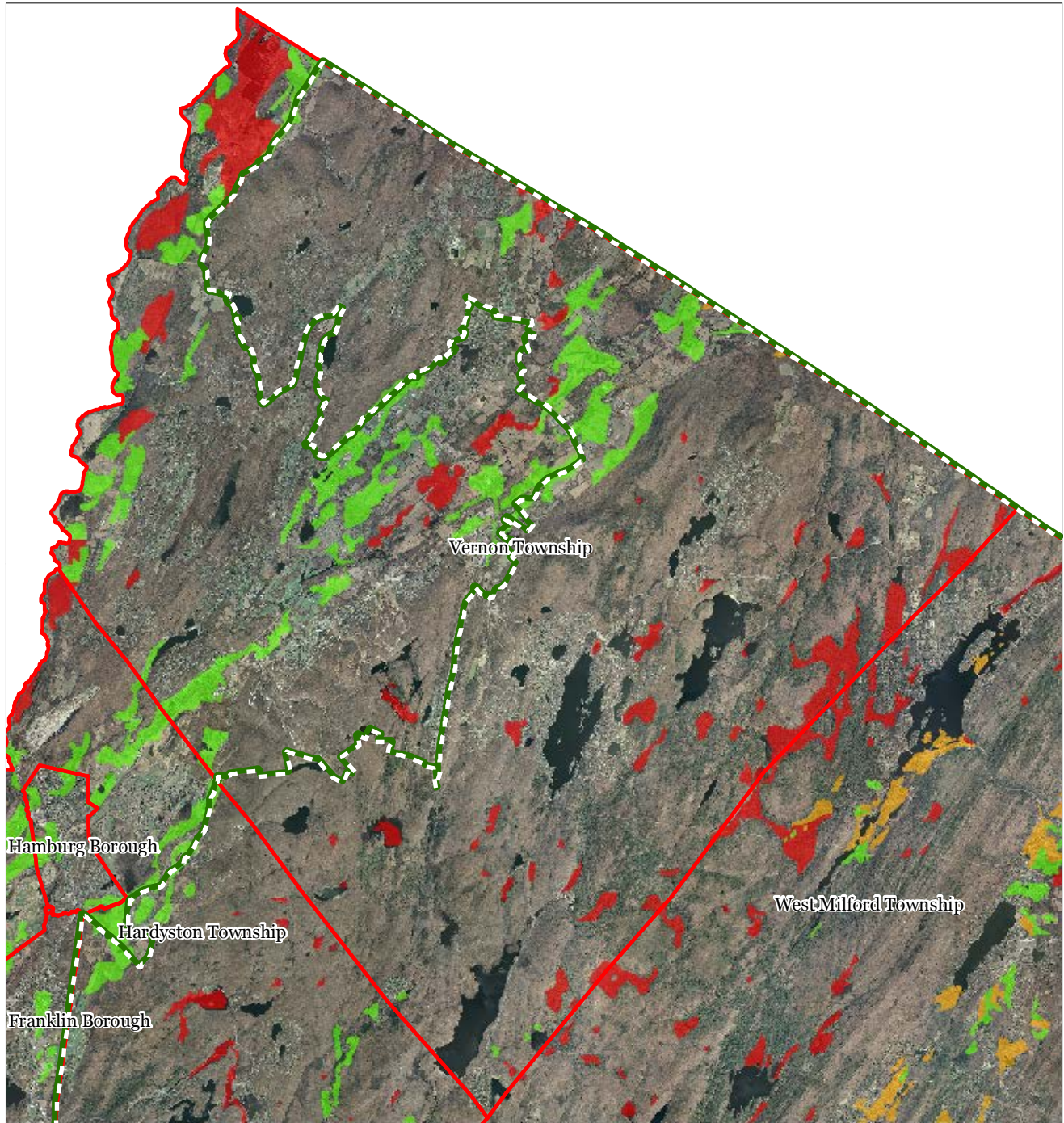
Vernon Township



1 inch = 1.48 miles



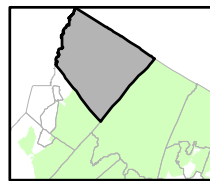
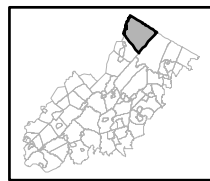
Figure 27: Important Farmland Soils



Important Farmland Soils

-  Prime Farmland
-  Farmland of Local Importance
-  Farmland of Statewide Importance
-  Farmland of Unique Importance
-  Preservation Area
-  Municipal Boundaries

Vernon Township

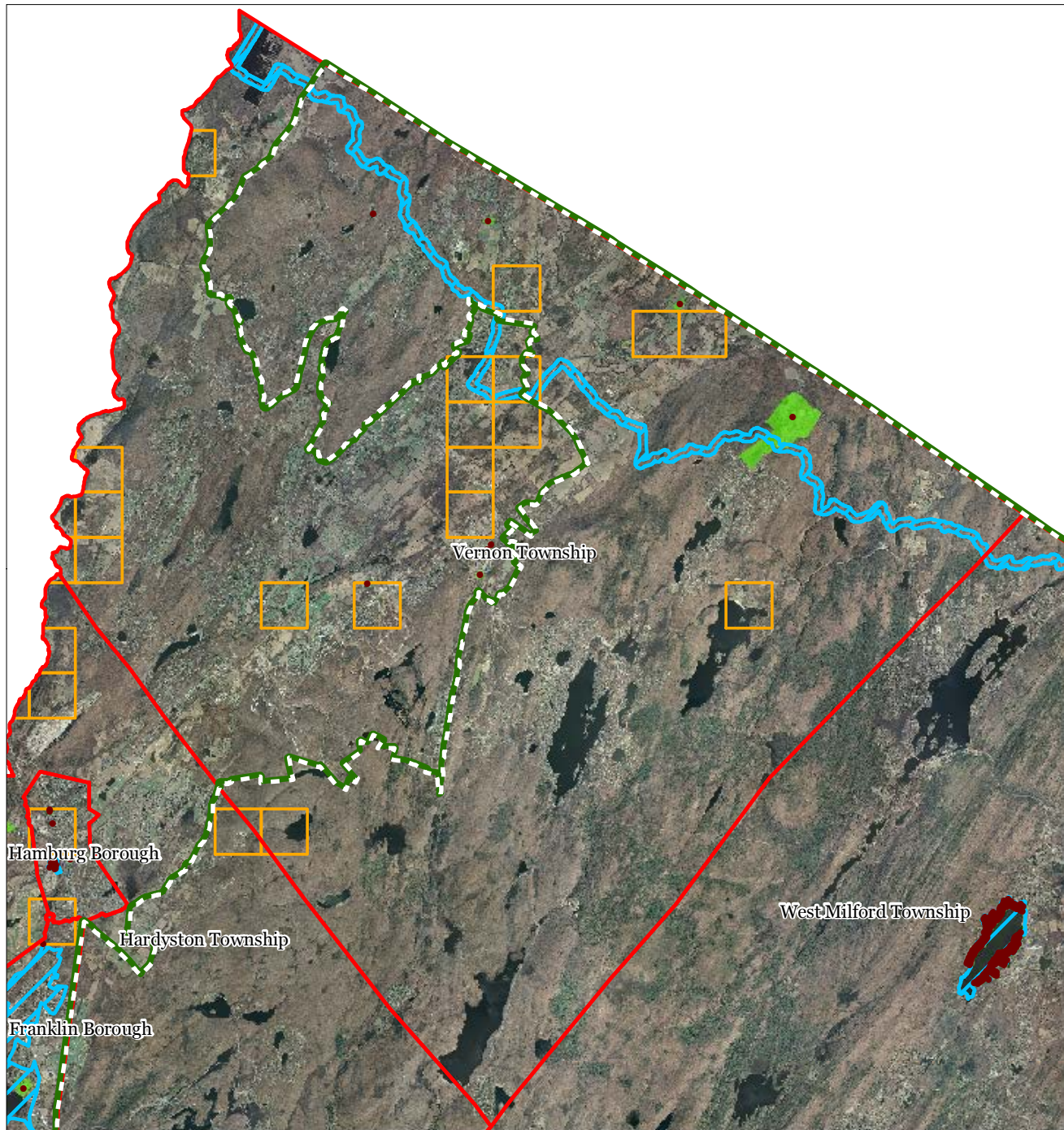


1 inch = 1.48 miles



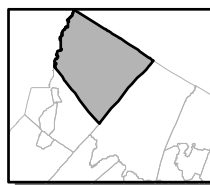
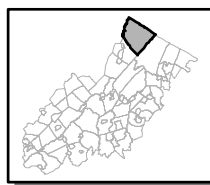
VERNON TOWNSHIP
HIGHLANDS ENVIRONMENTAL RESOURCE INVENTORY

Figure 28: Historic, Cultural, and Archaeological Resources Inventory



-  Preservation Area
-  Municipal Boundaries
-  Archaeological Grids (1 sqmi)
-  NJ Historic Districts
-  Historic Property Points
-  Historic Property Polygons

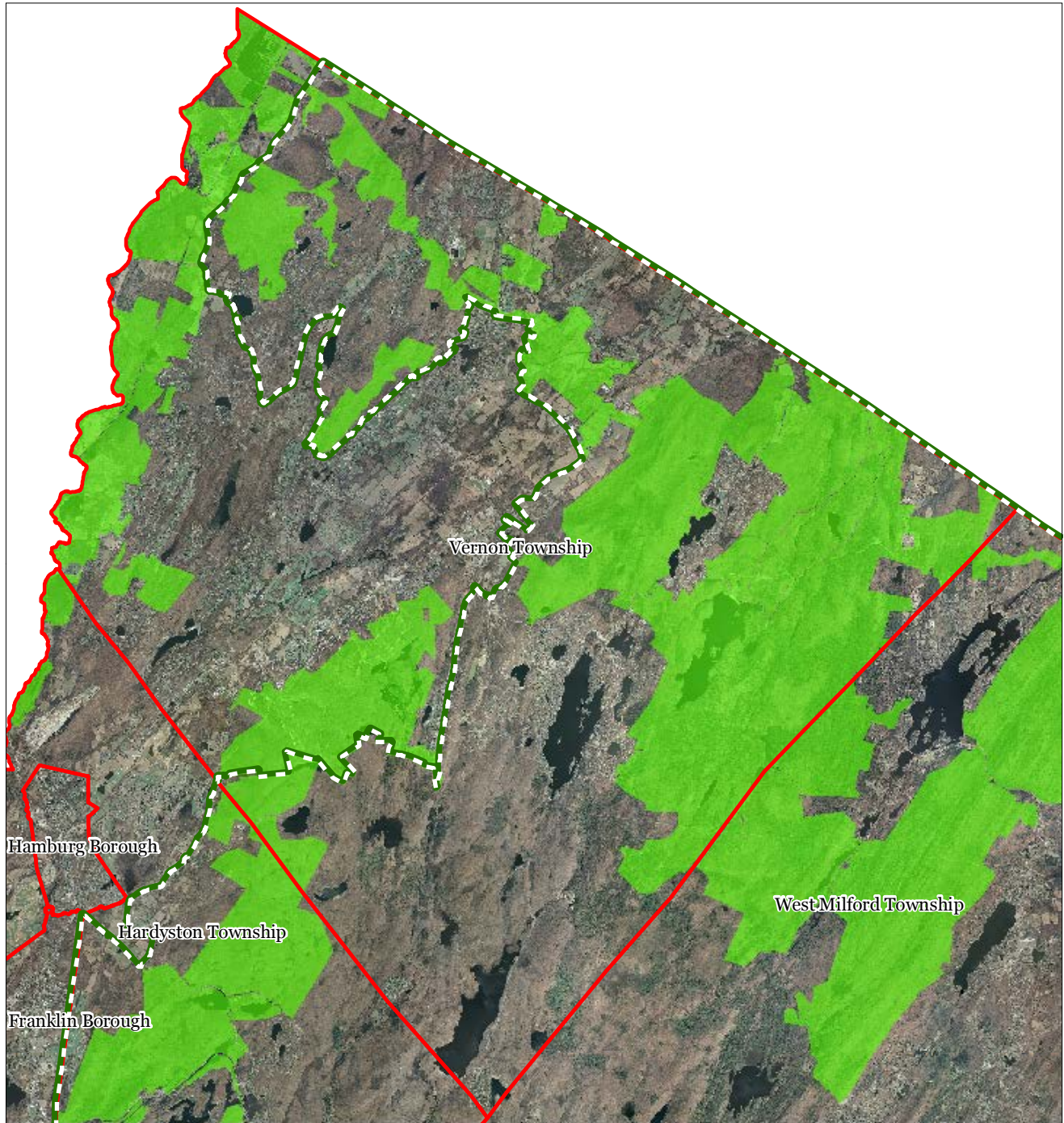
Vernon Township






1 inch = 1.48 miles

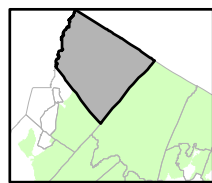
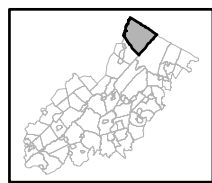


Figure 29: Baseline Scenic Resources Inventory



-  Scenic Resources
-  Municipal Boundaries
-  Preservation Area

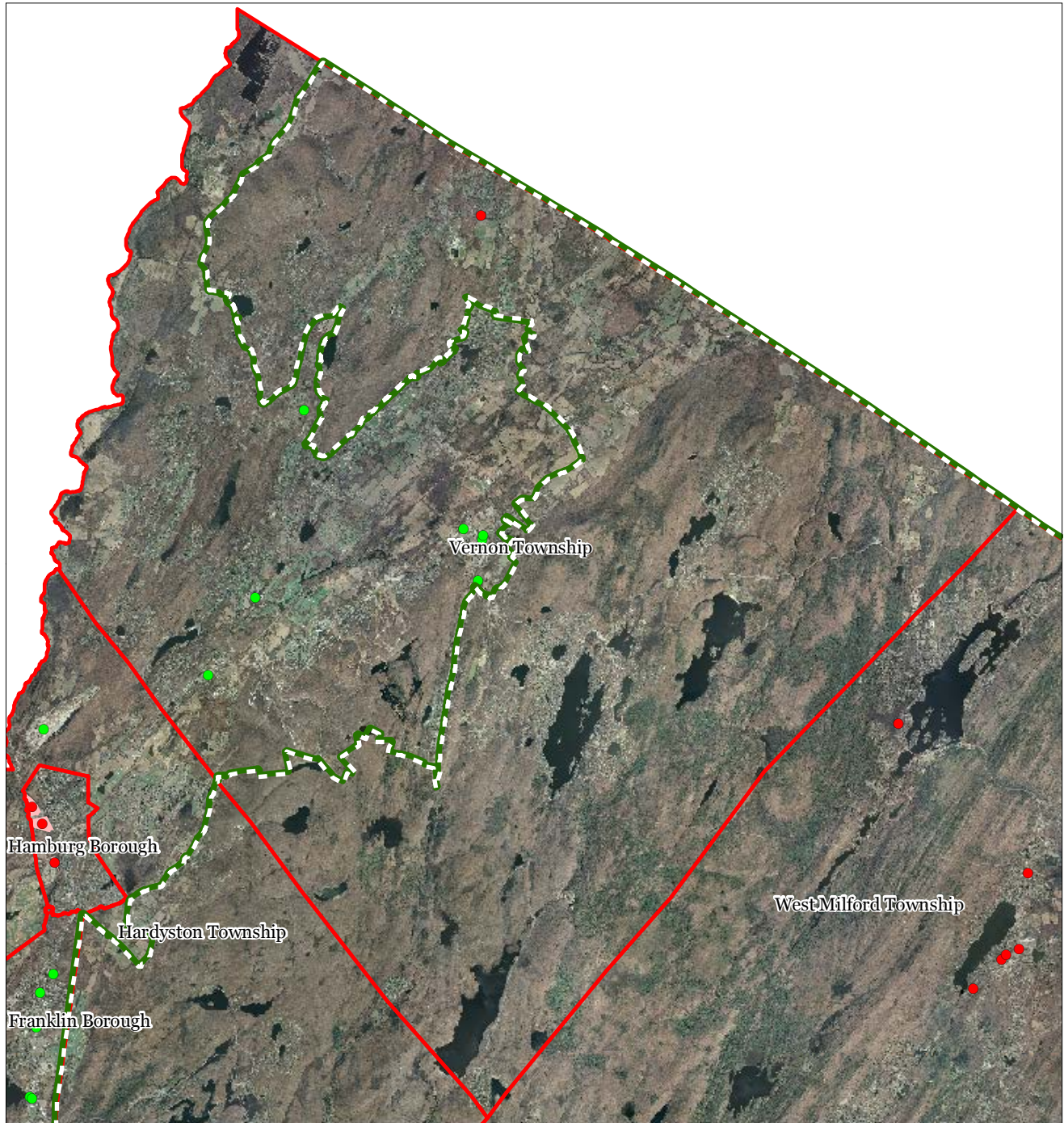
Vernon Township



1 inch = 1.48 miles



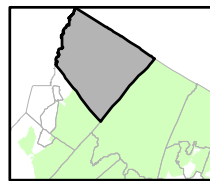
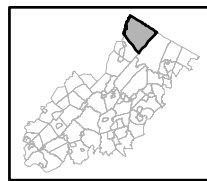
Figure 30: Highlands Contaminated Site Inventory



Highlands Contaminated Site Inventory

- Tier 1 Sites
- Tier 1 Sites (Polygons)
- Tier 2 Sites
- ▭ Preservation Area
- ▭ Municipal Boundaries

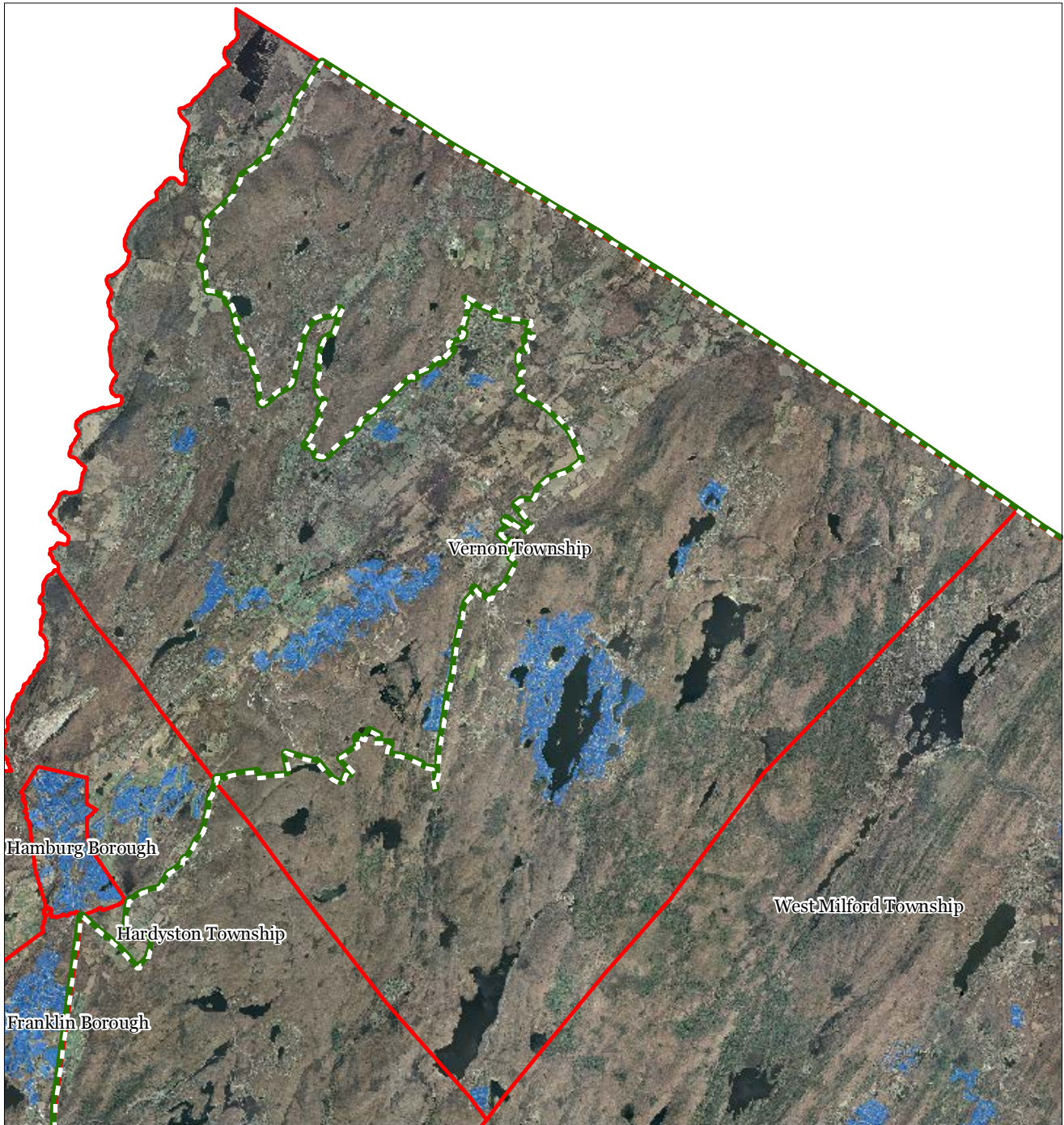
Vernon Township






1 inch = 1.48 miles

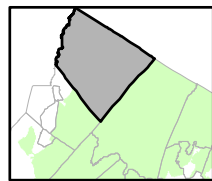
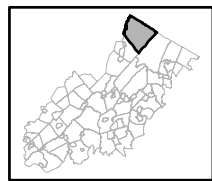


Figure 31: Public Community Water Systems



-  Public Community Water Systems
-  Preservation Area
-  Municipal Boundaries

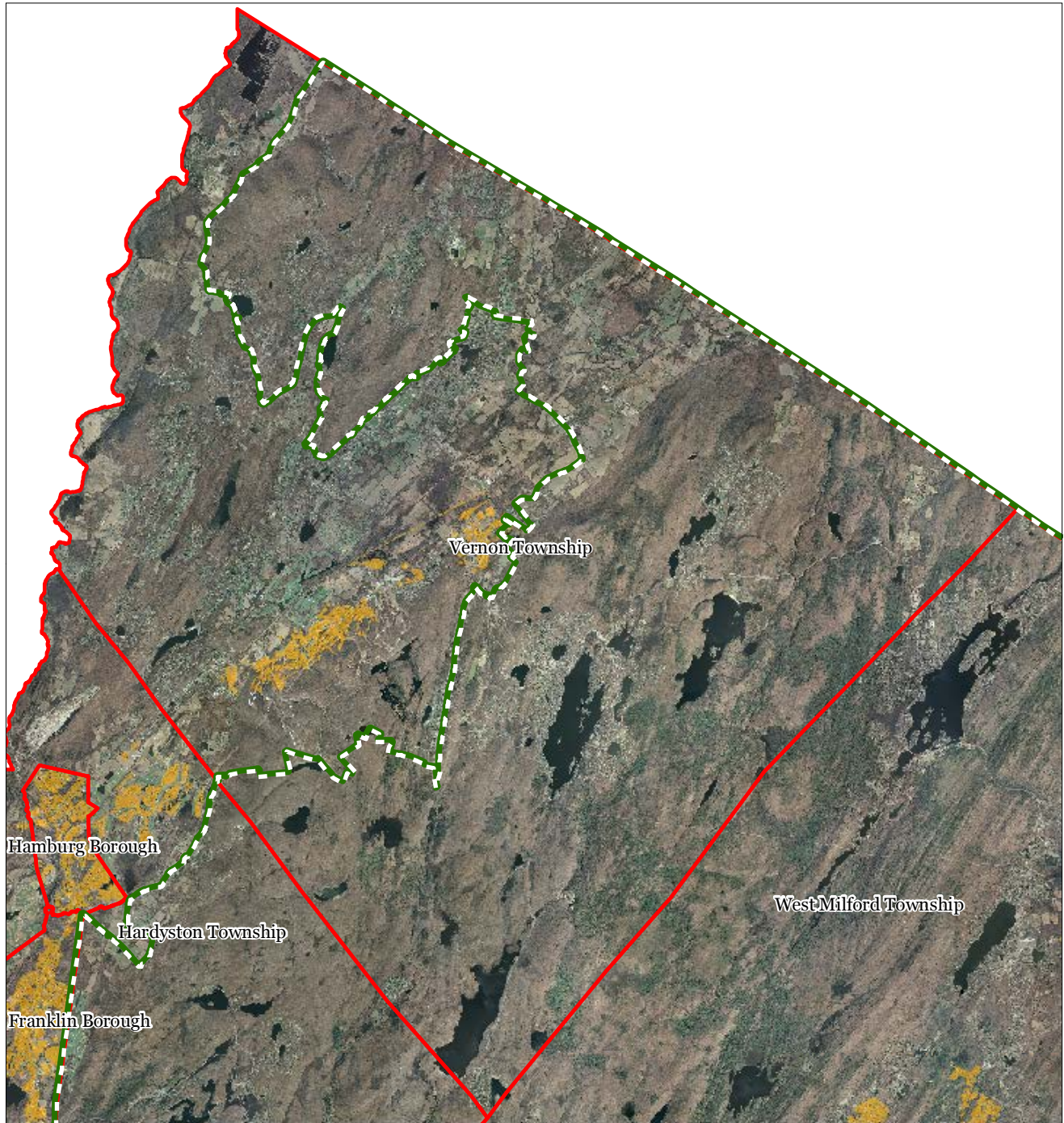
Vernon Township






1 inch = 1.48 miles



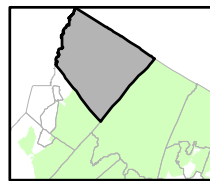
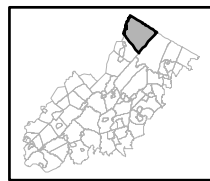
Figure 32: Highlands Domestic Sewerage Facilities



Highlands Domestic Sewerage Facilities

-  Existing Area Served
-  Preservation Area
-  Municipal Boundaries

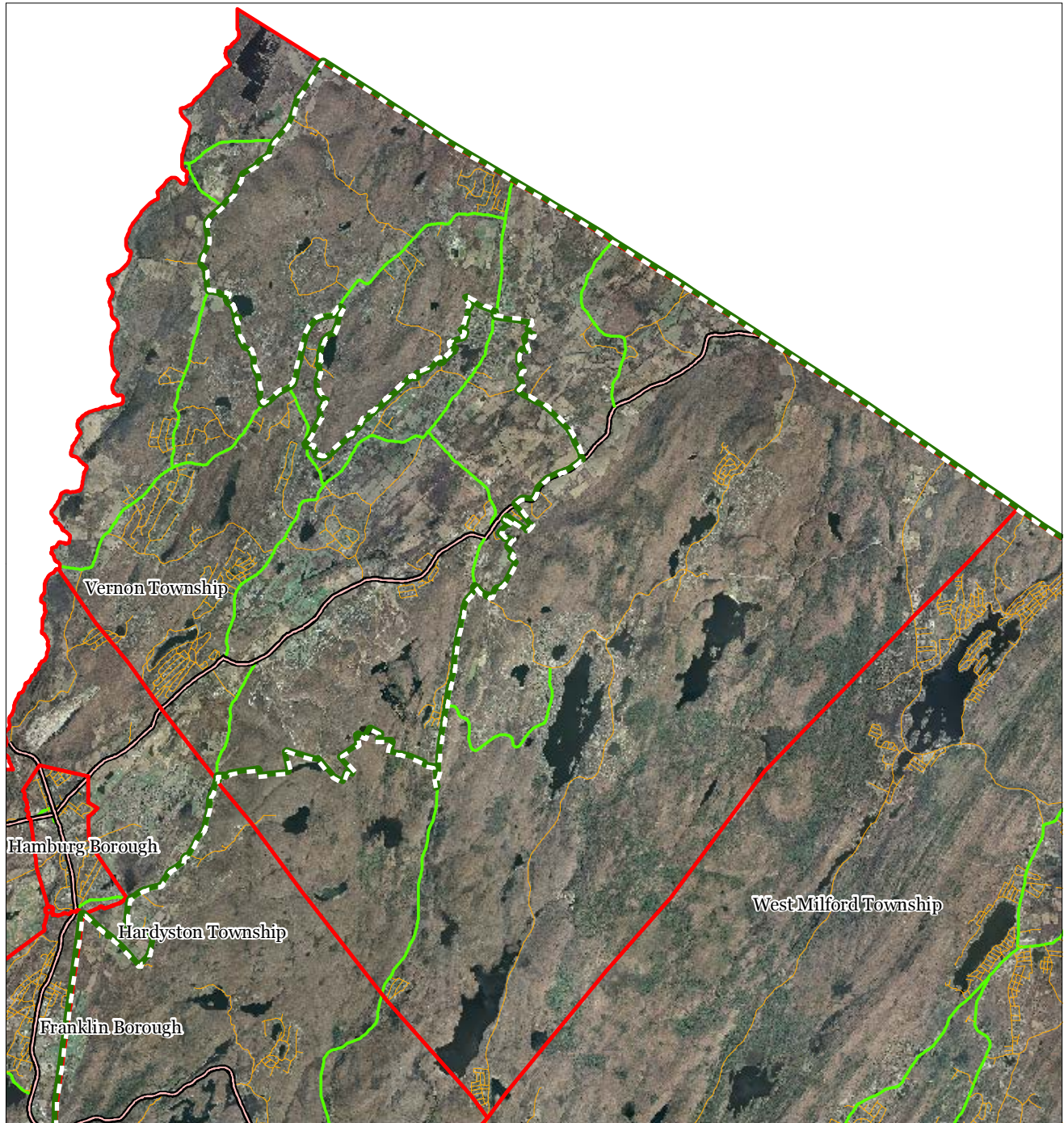
Vernon Township







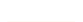
1 inch = 1.48 miles





Figure 33: Highlands Roadway Network

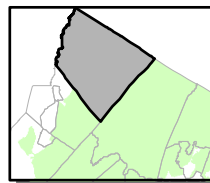
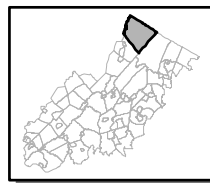


Roadway Network

-  Interstate Highways
-  U.S. Routes
-  State Routes
-  County Routes
-  Local Routes

-  Preservation Area
-  Municipal Boundaries

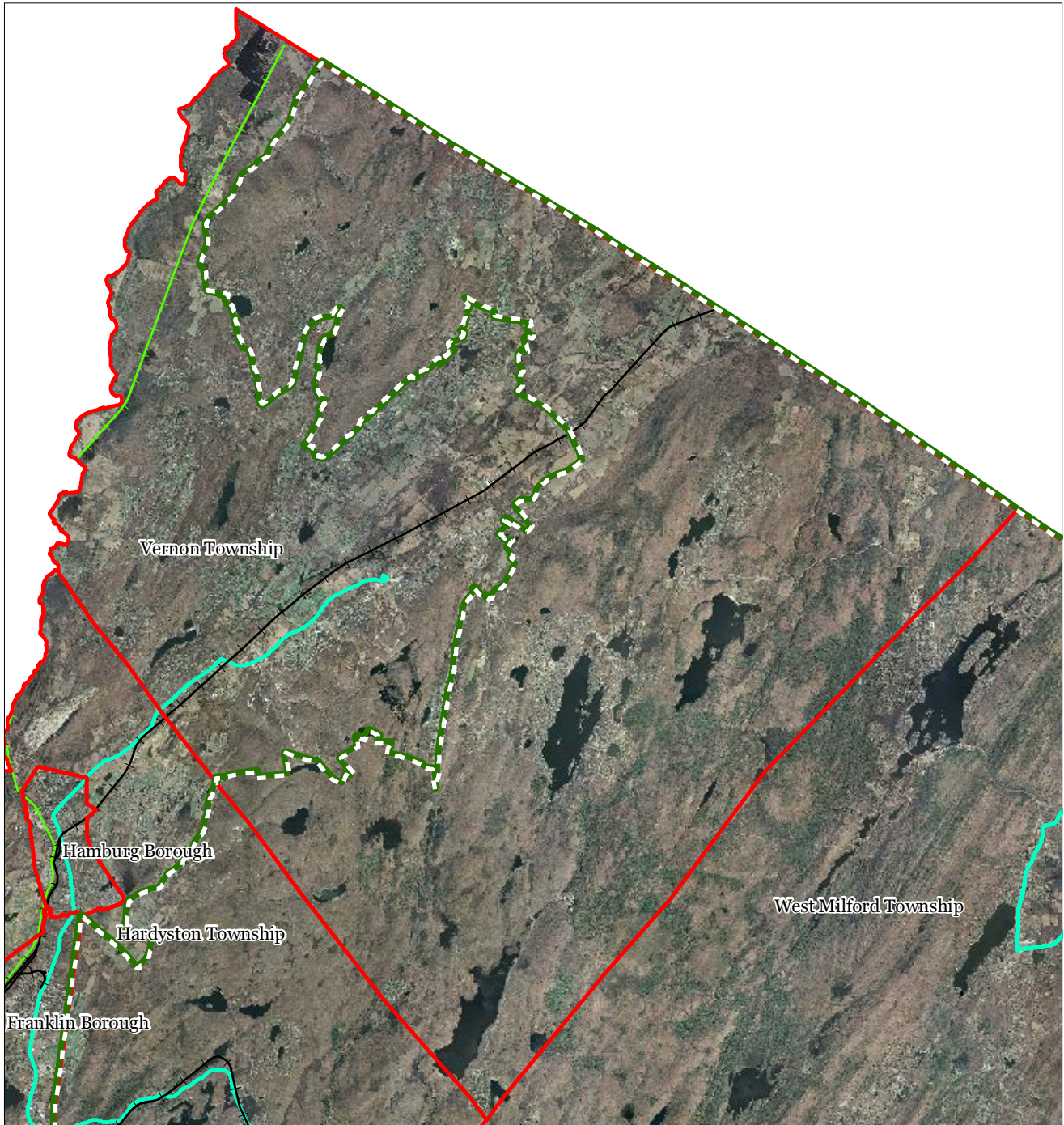
Vernon Township



1 inch = 1.48 miles

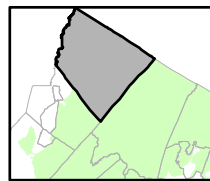
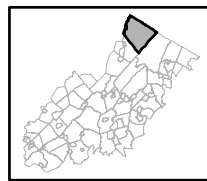


Figure 34: Highlands Transit Network



- | | |
|----------------------------------|------------------------|
| Rail Network | ● Rail Stations |
| — Boonton Line | ● Park and Ride Sites |
| — Main Line & Bergen County Line | — Private Bus Lines |
| — Morris and Essex Line | — NJ Transit Bus Lines |
| — Raritan Valley Line | ✈ Airports |
| Freight Rail Lines | |
| — Freight Rail Lines | |
| — Abandoned Freight Rail | |

Vernon Township



1 inch = 1.48 miles

