

Figure 1: Municipal Build-out Report Septic System Yield by HUC14 and LUCM Zone *
HOPATCONG BOROUGH

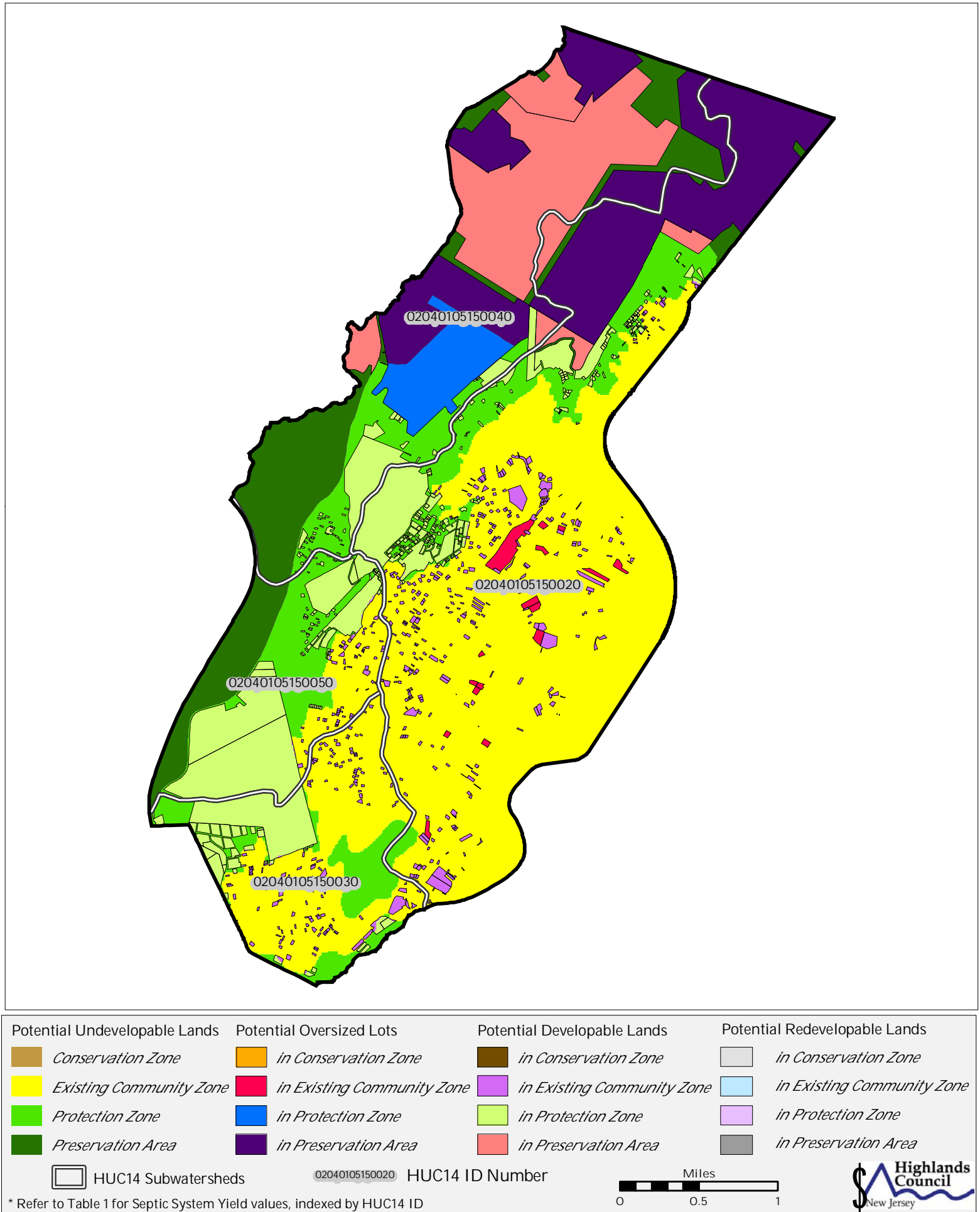
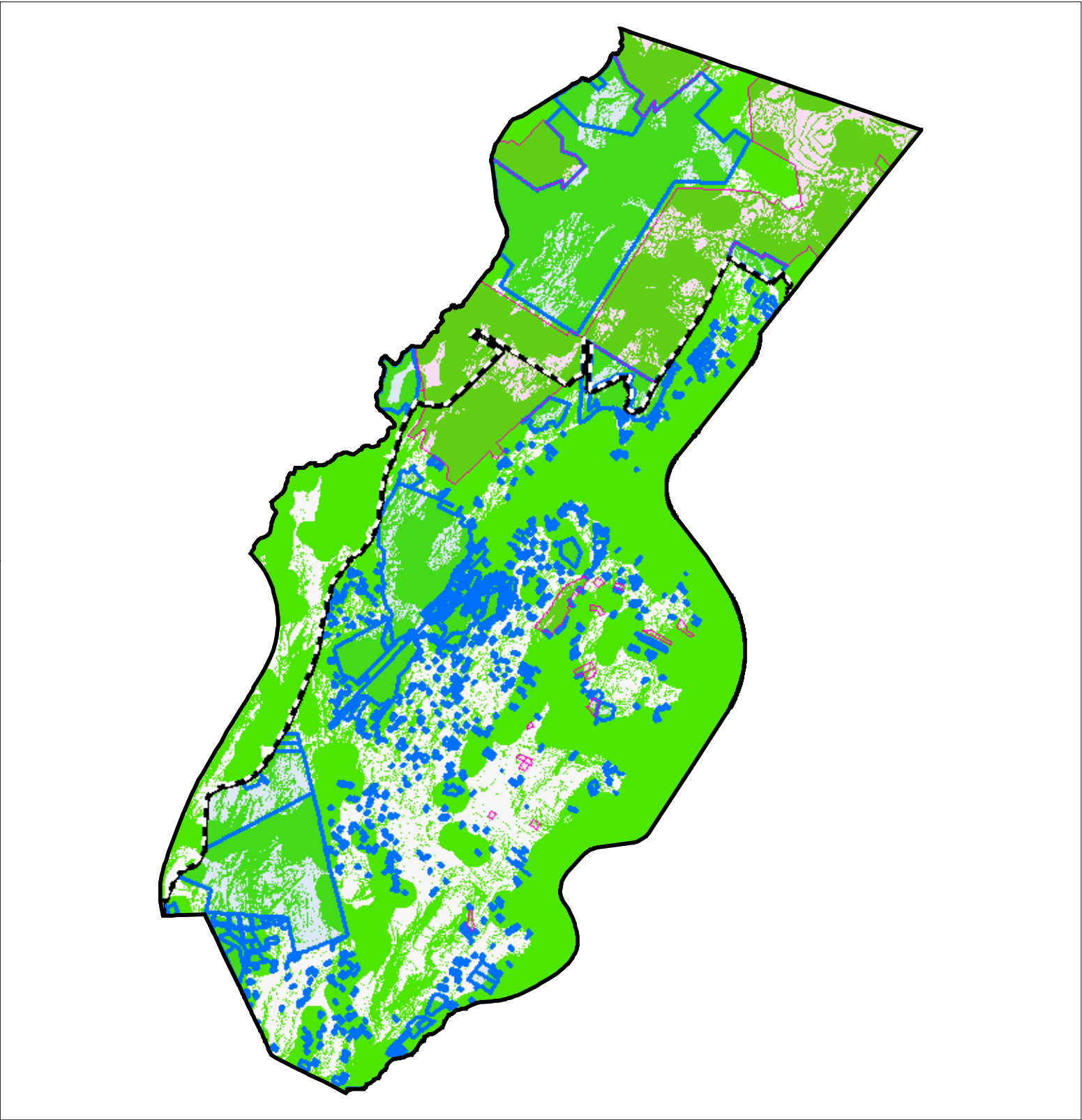


Figure 2: Municipal Build-out Report Environmental Constrained Lands



Highlands Build-out Environmental Constrained Lands

Constraints:
Highlands Open Water Buffers (300ft)
Flood Prone Areas
Steep Slopes (Moderate and Severe)

Potential Oversized Lots

Potential Developable Lots

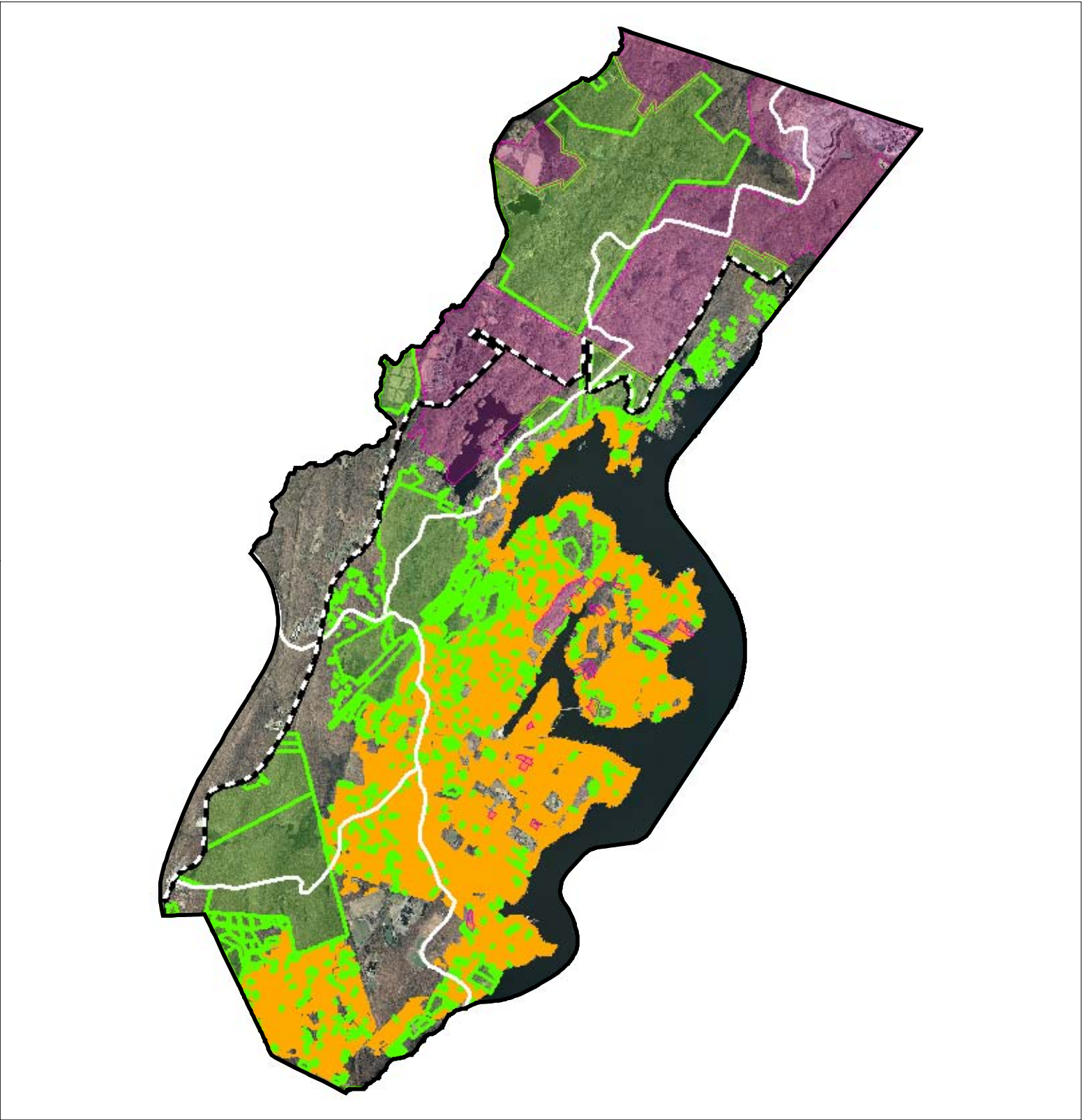
Preservation Area

HOPATCONG BOROUGH

Miles

00.51

Figure 3: Municipal Build-out Report RMP HDSF Wastewater Utilities



Highlands Domestic Sewerage Facilities "2008 RMP Existing Area Served"

Musconetcong SA

HUC14 Subwatersheds

Potential Oversized Lots

Potential Developable Lots

Preservation Area

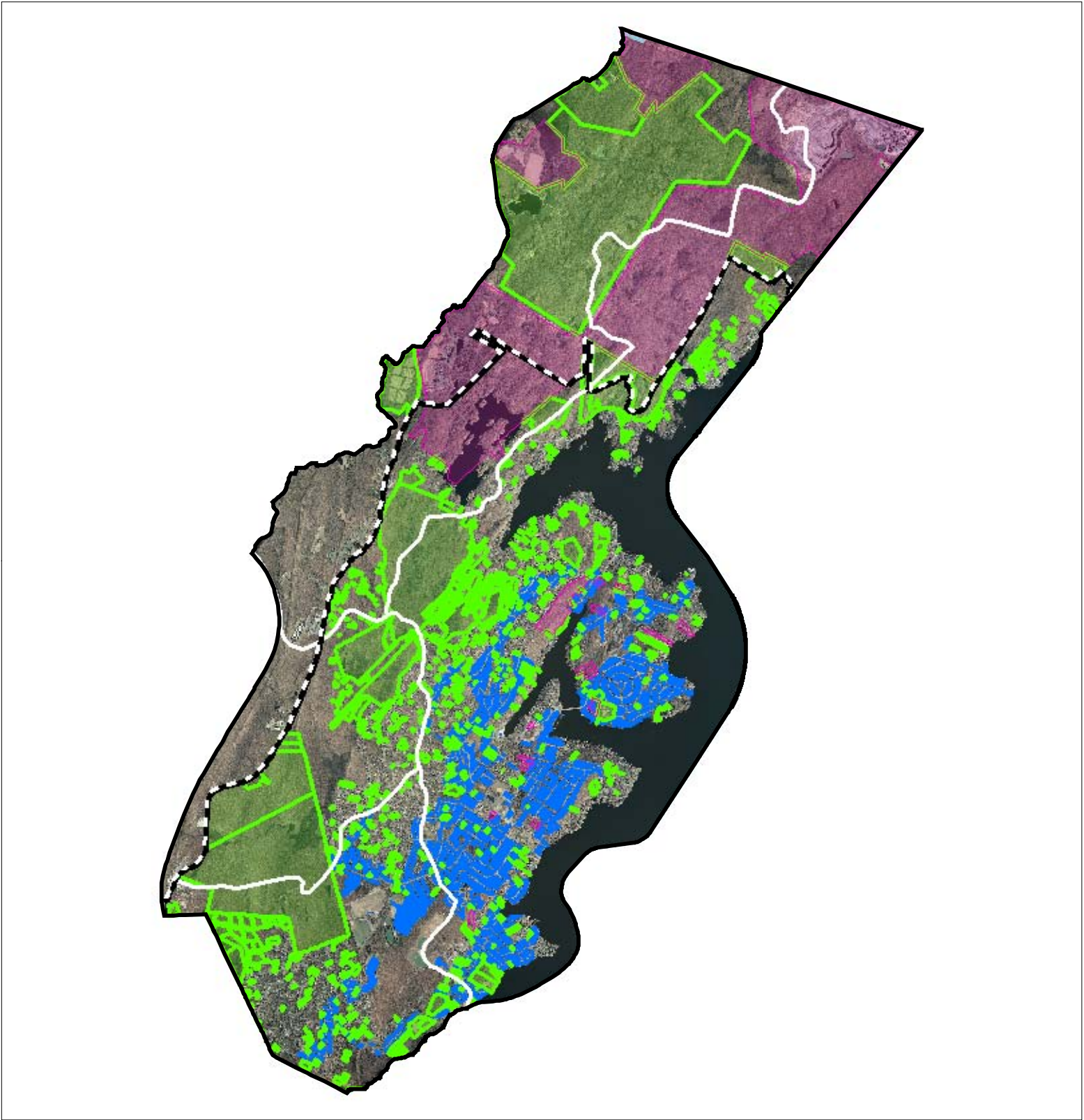
HOPATCONG BOROUGH

An inset map of the state of New Jersey with a small rectangle highlighting the location of Hopatcong Borough in the northern part of the state.


A horizontal scale bar with markings for 0, 0.5, and 1 mile.


The logo for the Highlands Council of New Jersey, featuring a stylized blue wave and the text "Highlands Council New Jersey".


Figure 4: Municipal Build-out Report RMP Public Community Water System Utilities




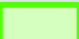
Public Community Water Systems "2008 RMP Existing Area Served"


 *HOPATCONG WATER DEPARTMENT*

 *SPARTA TOWNSHIP WATER (SUMMIT LAKE)*

 HUC14 Subwatersheds

 Potential Oversized Lots

 Potential Developable Lots

 Preservation Area

HOPATCONG BOROUGH

