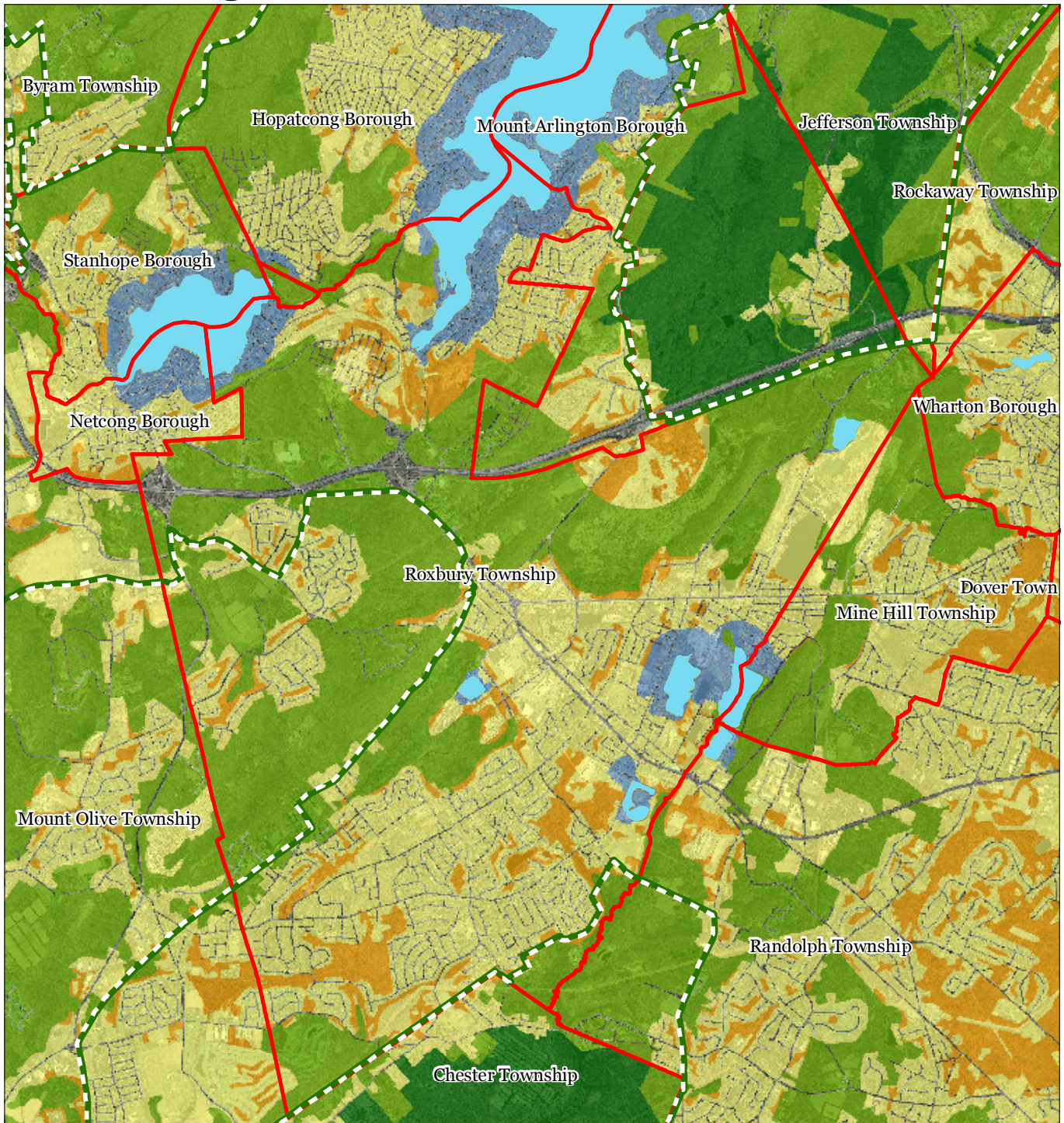


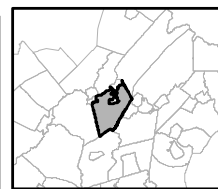
## Exhibit A: Highlands Preservation Areas



### Regional Master Plan Overlay Zone Designation

Zone	
	Protection
	Conservation
	Existing Community
	Lakes Greater Than 10 acres
	Preservation Area
	Municipal Boundaries
Sub-Zone	
	Existing Community Environmentally Constrained
	Conservation Environmentally Constrained
	Lake Community
	Wildlife Management

## Roxbury Township

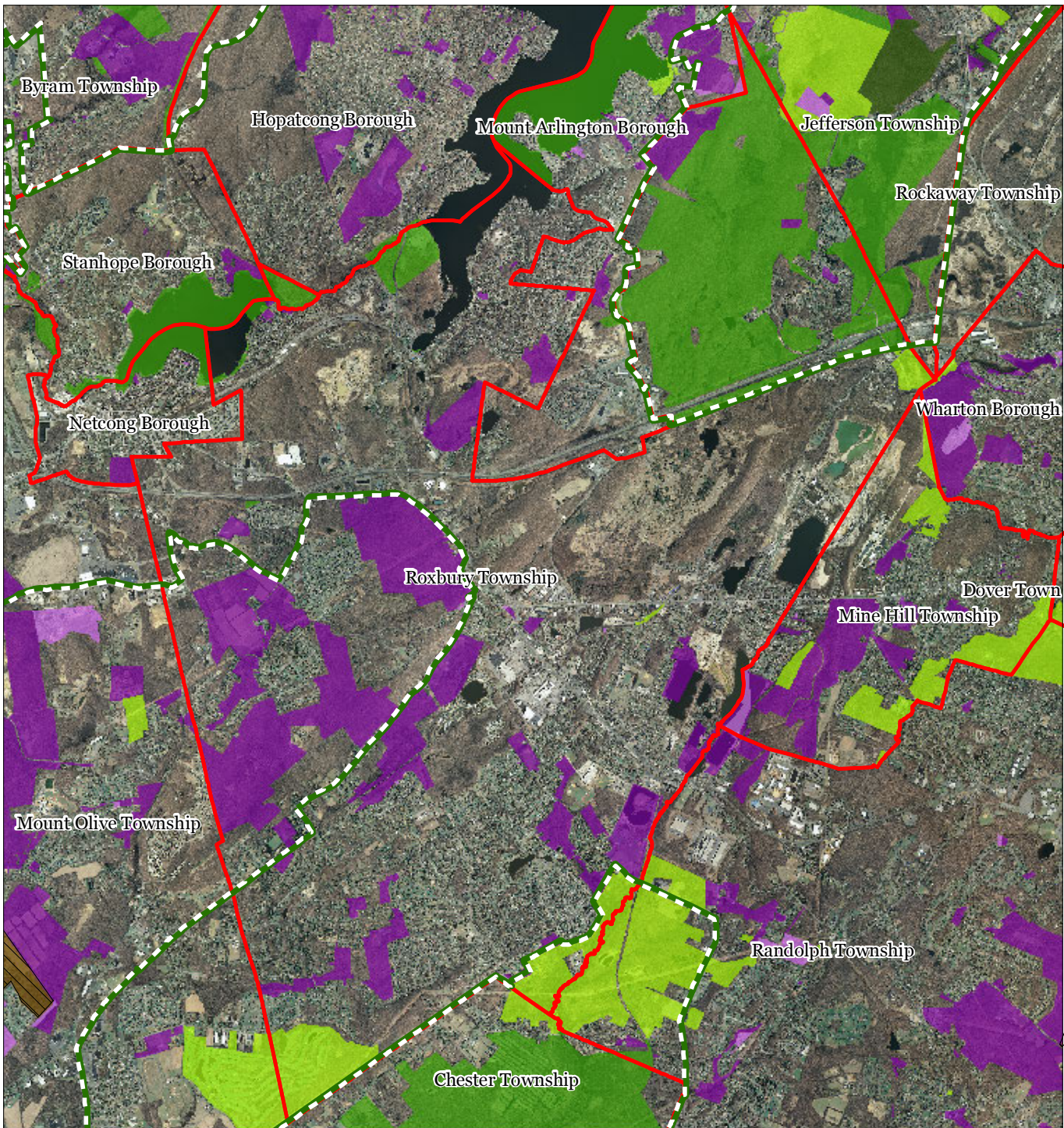


1 inch = 0.923 miles



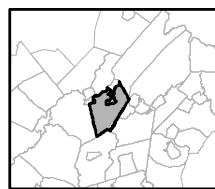
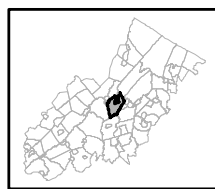


## Exhibit B: Preserved Lands



- |   |                               |
|---|-------------------------------|
| <b>Preserved Lands</b>                  | <b>Conservation Easements</b> |
| Federal Open Space                      | Green Acres                   |
| State Open Space                        | <b>SADC Easements</b>         |
| County Open Space                       | SADC Final                    |
| Municipal Open Space                    | SADC Preserved                |
| Non-Profit/Private Open Space           | Municipal Boundaries          |
| Water Supply Watershed Lands            | Preservation Area             |
| Preserved Farmland                      |                               |
| Highlands Transfer of Development Lands |                               |

## Roxbury Township



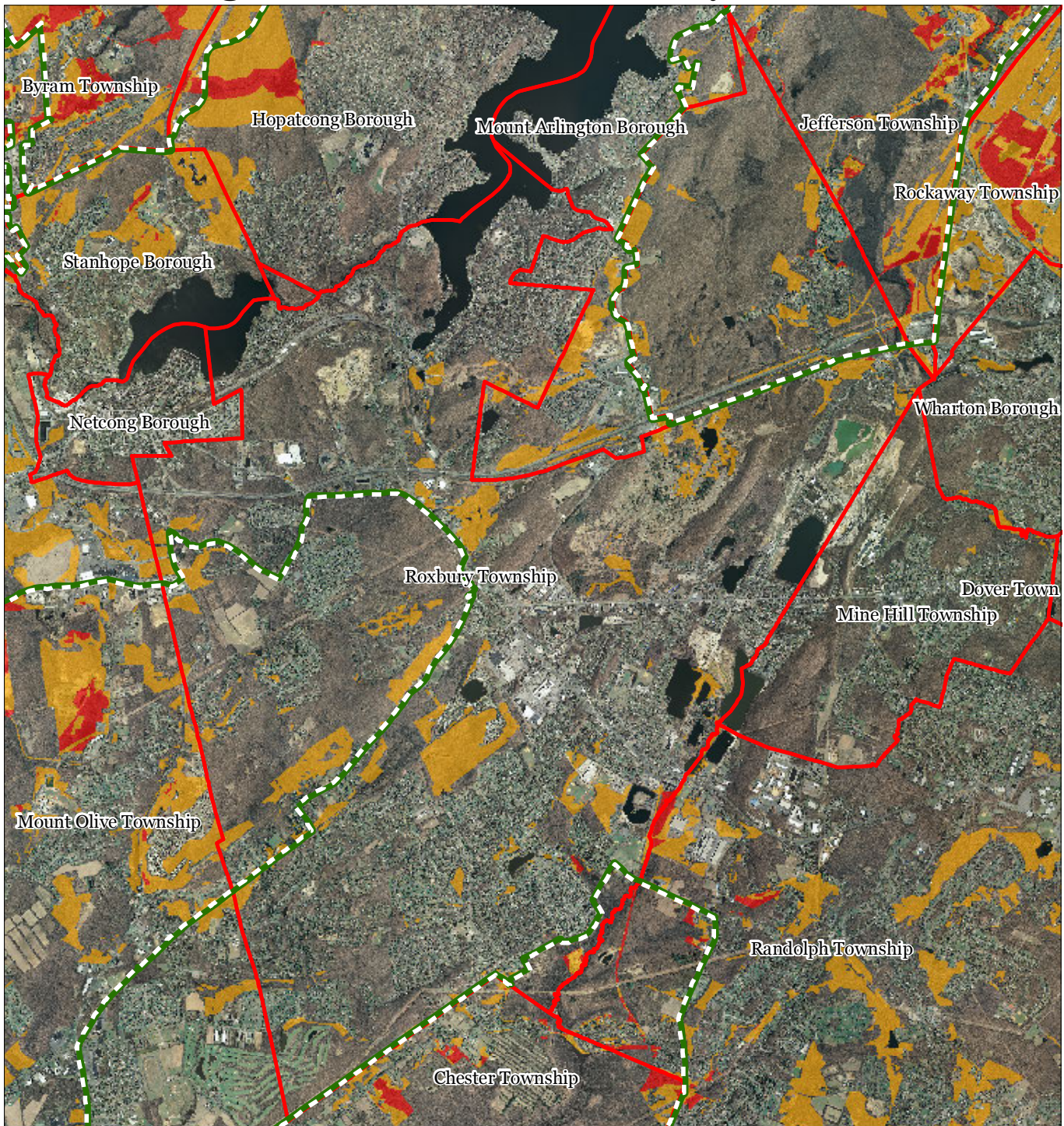
1 inch = 0.923 miles

**Highlands Council**  
New Jersey





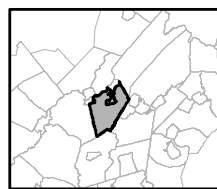
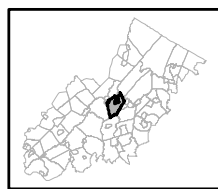
## Exhibit C: Highlands Conservation Priority Areas



Conservation Priority Area

- Moderate*
- High*
- Preservation Area
- Municipal Boundaries

## Roxbury Township

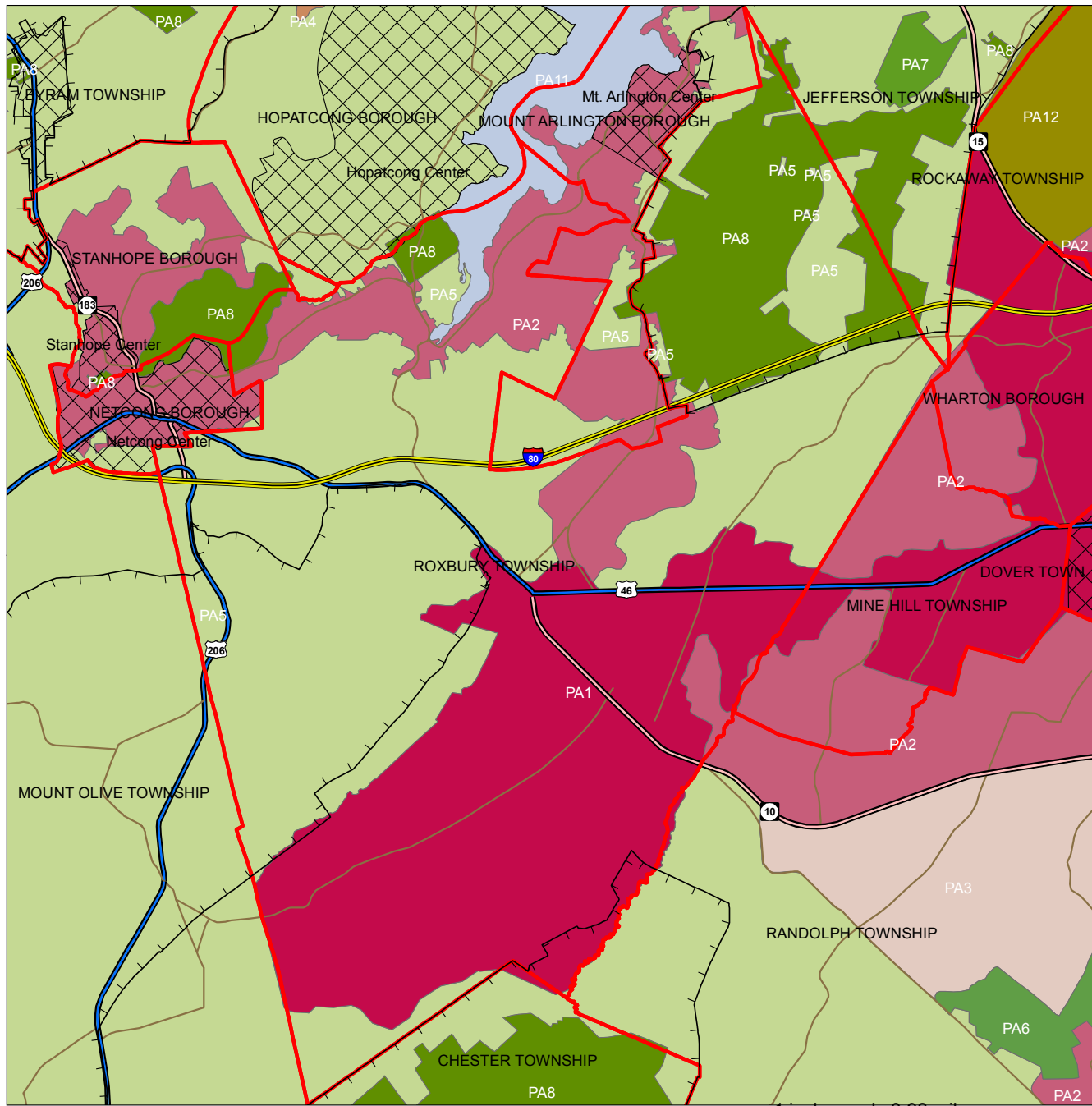


1 inch = 0.923 miles





## Exhibit D: State Planning Areas



1 inch equals 0.98 miles

### Legend

- Preservation Area
- Municipal Boundaries
- Interstate Highways
- U.S. Routes
- State Routes
- County Routes
- Designated Centers\*

### State Planning Areas\*

- METROPOLITAN (PA1)
- SUBURBAN (PA2)
- FRINGE (PA3)
- RURAL (PA4)
- RURAL ENVIRONMENTALLY SENSITIVE (PA42)
- ENVIRONMENTALLY SENSITIVE (PA5)
- PARK (PA6)
- FEDERAL PARK (PA7)
- STATE PARK (PA8)
- WATER (PA11)
- MILITARY (PA12)

