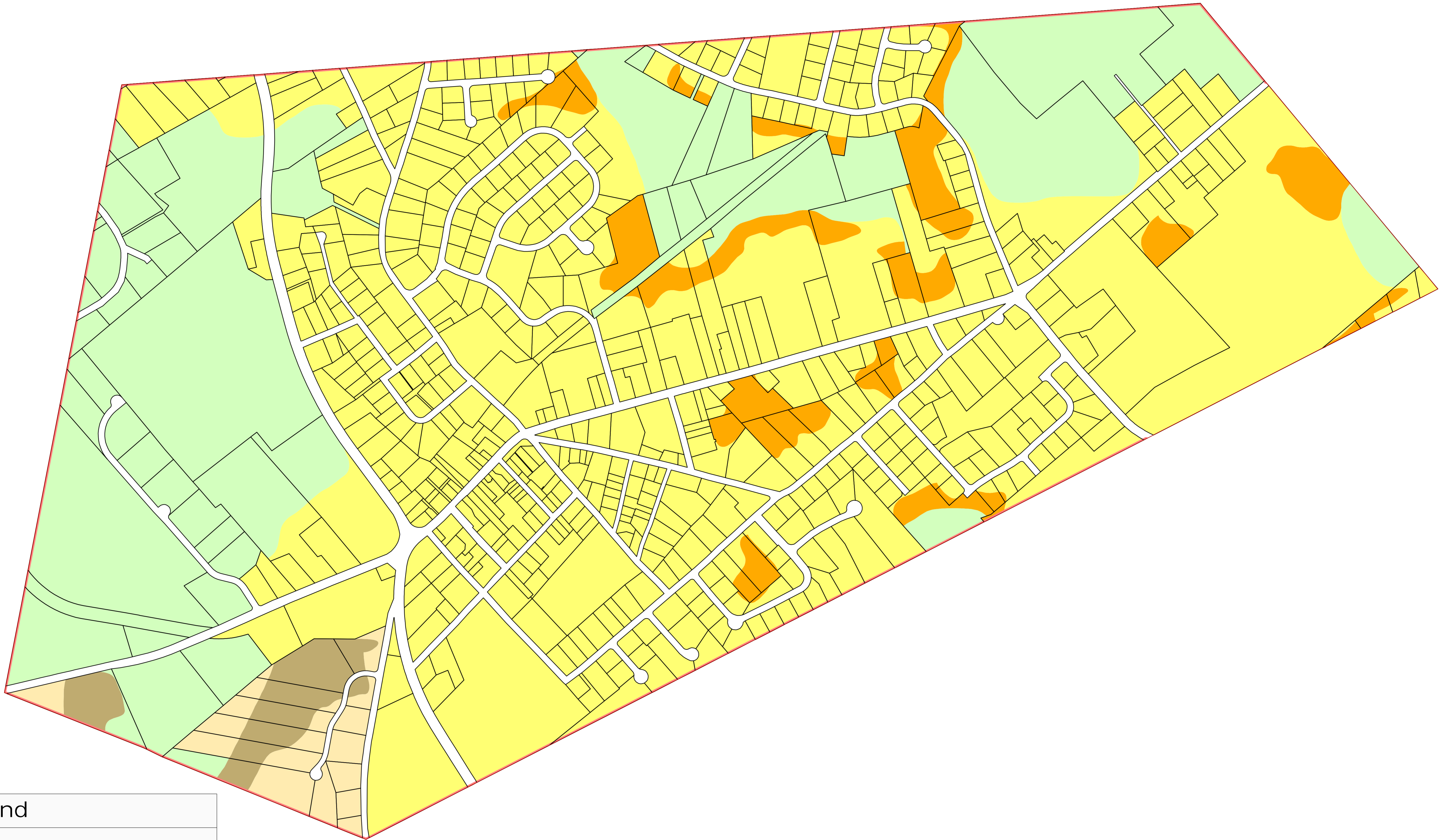


**ATTACHMENT 2 --- ORD. #2017-**



**Legend**

-  Municipal Boundary
-  Parcel Boundaries
-  Highlands Planning Area
-  Highlands Preservation Area
- Land Use Capability Zone**
-  *Protection*
-  *Conservation*
-  *Existing Community*
- Land Use Capability Sub-Zone**
-  *Existing Community Environmentally Constrained*
-  *Conservation Environmentally Constrained*
-  *Wildlife Management*

**Locator Maps**





# Exhibit 2:

# BOROUGH OF CHESTER, MORRIS COUNTY, NJ

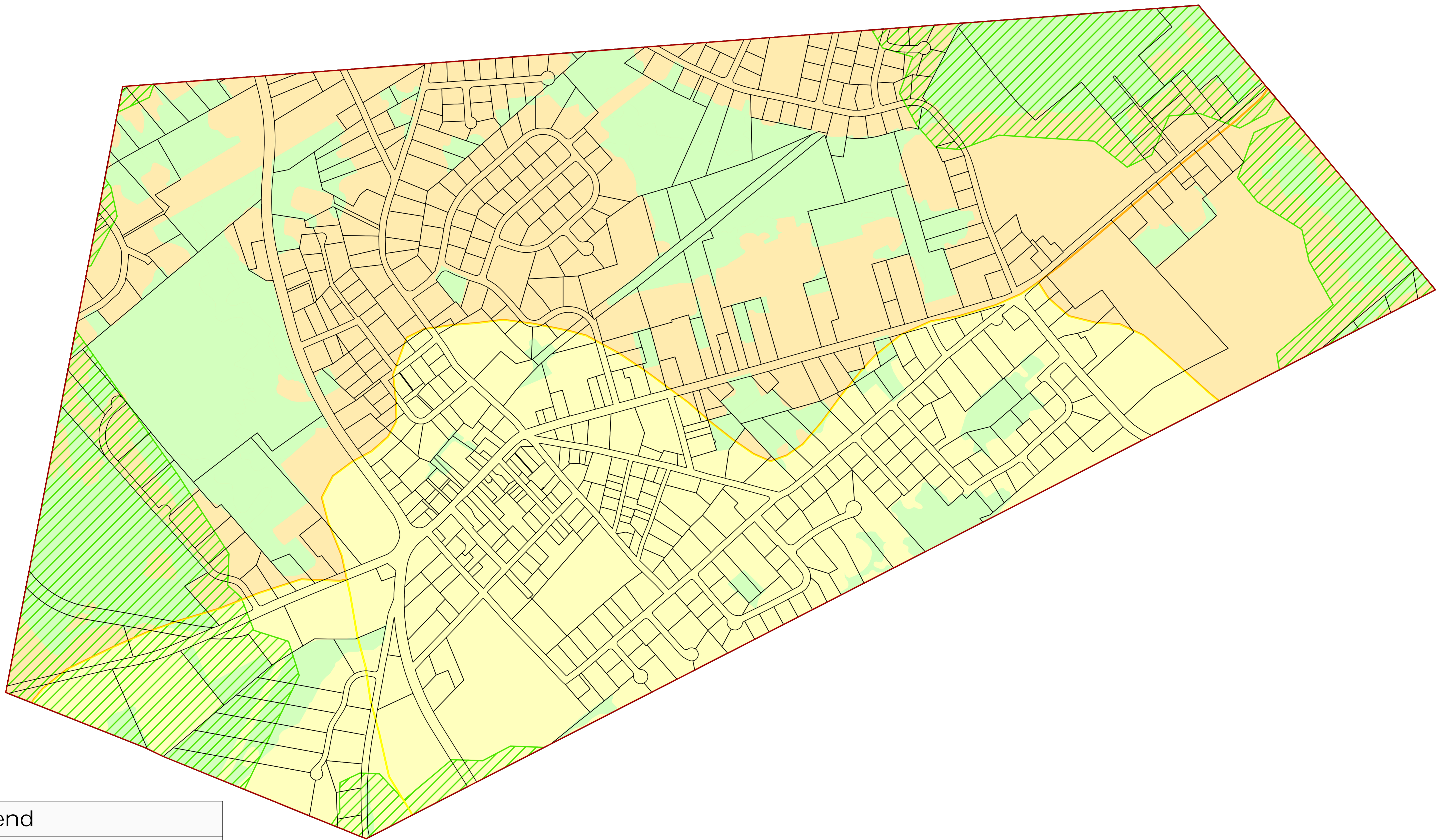


Borough of Chester Highlands Area

Forest Resource Area

Total Forest Area

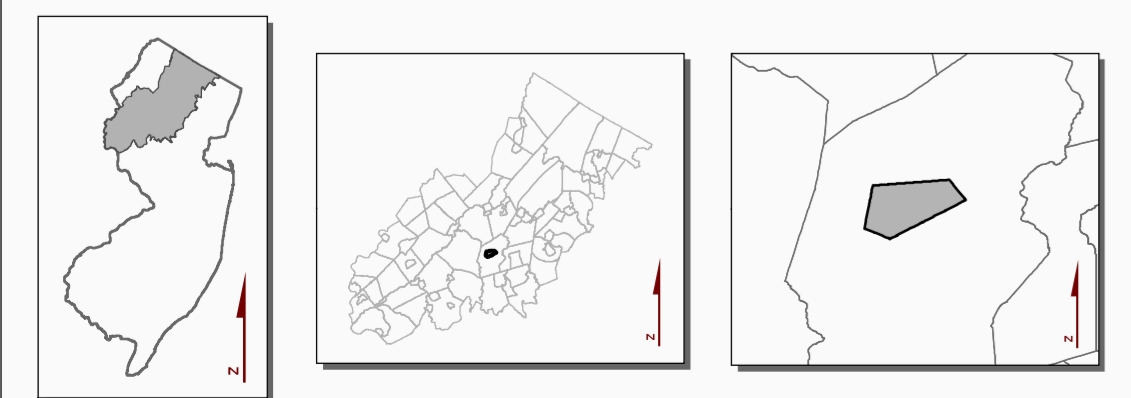
Forest Subwatershed Integrity Areas




## Legend

- Municipal Boundary
- Parcel Boundaries
- Forest Resource Area
- Total Forest Area
- Forest Integrity By HUC14 Subwatershed**
- Low*
- Moderate*
- High*

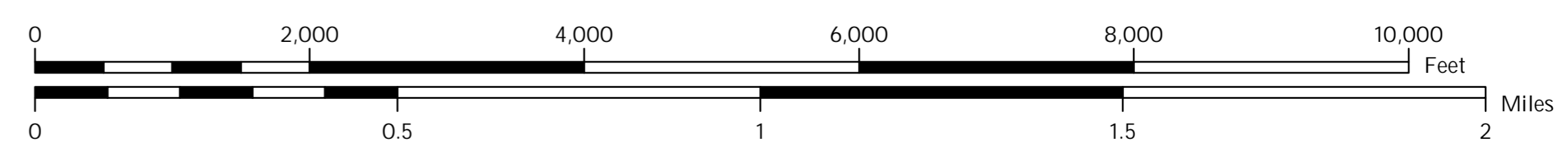
## Locator Maps



**BOROUGH OF CHESTER**  
MORRIS COUNTY, N.J.



MAP PREPARED BY THE NEW JERSEY  
HIGHLANDS COUNCIL, MAY 25, 2016





# Exhibit 3:

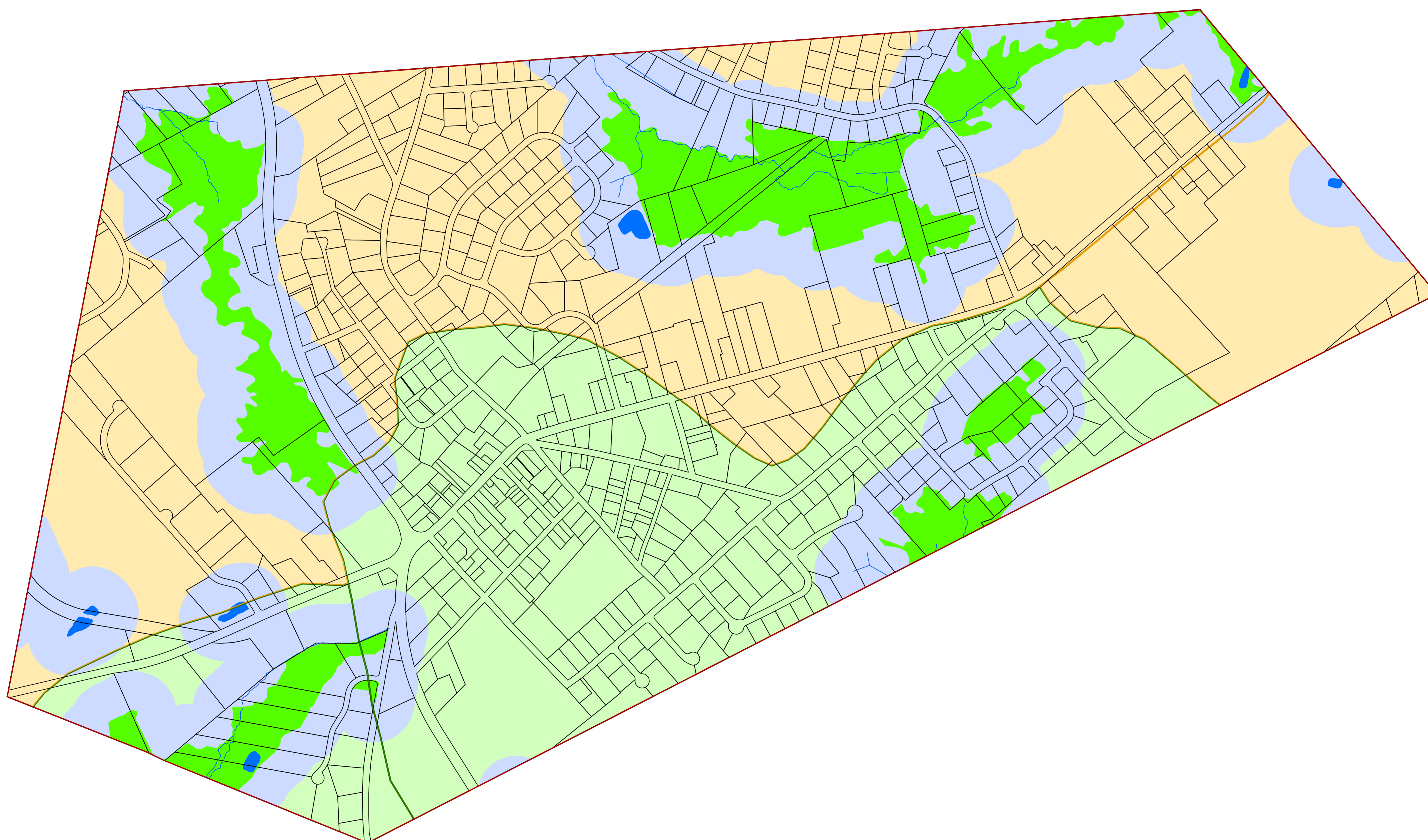
# BOROUGH OF CHESTER, MORRIS COUNTY, NJ



Borough of Chester Highlands Area

Highlands Open Waters

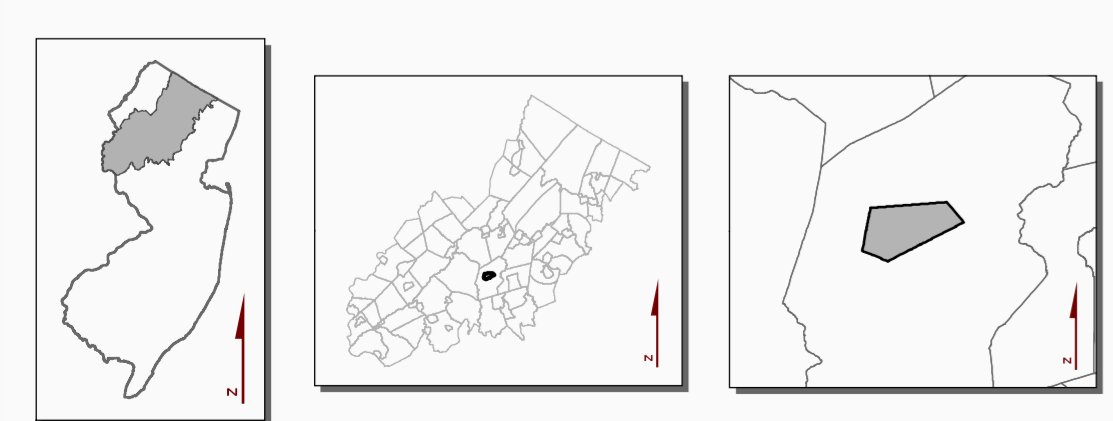
Watershed Resource Value Areas



## Legend

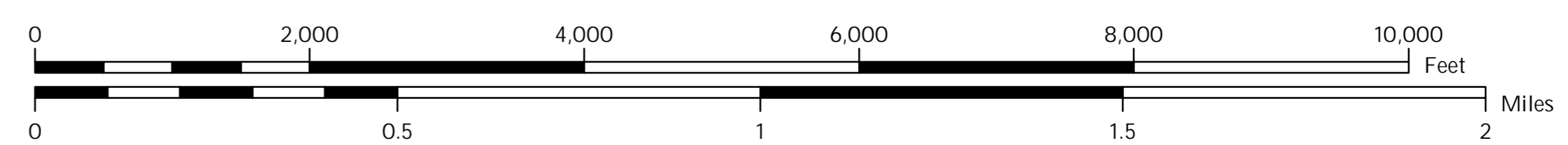
- Municipal Boundary
- Parcel Boundaries
- Lakes & Ponds
- Streams
- Wetlands
- Highlands Open Water Buffers (300ft)
- Watershed Values by HUC14 Subwatershed**
- Moderate
- High

## Locator Maps



**BOROUGH OF CHESTER**  
MORRIS COUNTY, N.J.

MAP PREPARED BY THE NEW JERSEY  
HIGHLANDS COUNCIL, MAY 25, 2016





# Exhibit 4:

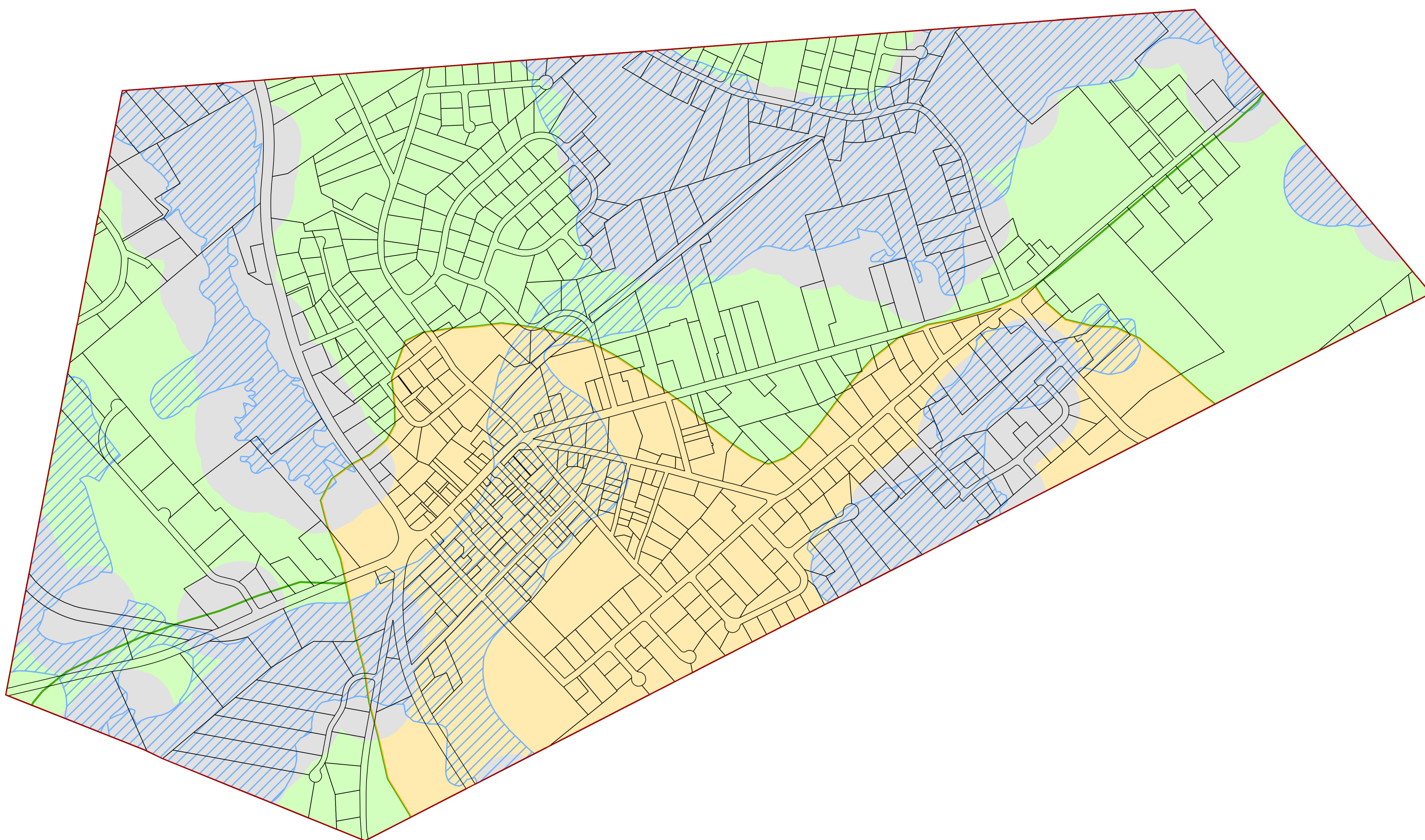
# BOROUGH OF CHESTER, MORRIS COUNTY, NJ



Borough of Chester Highlands Area

Riparian Area

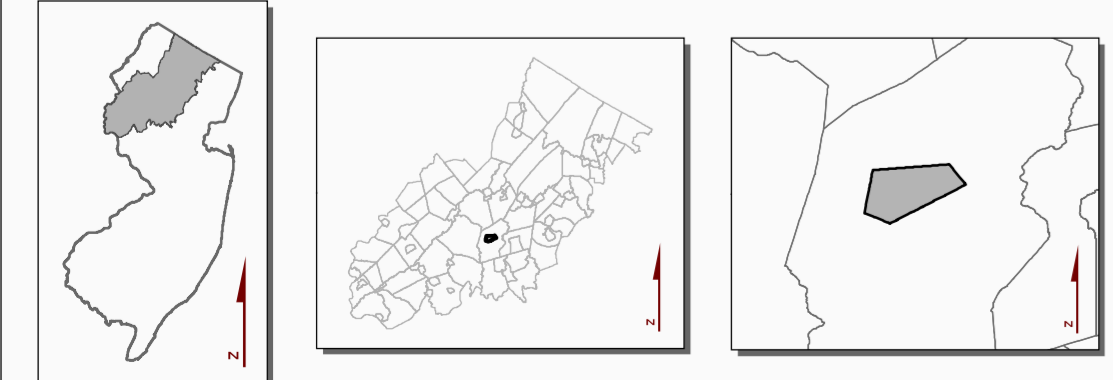
Riparian Subwatershed Integrity Areas



### Legend

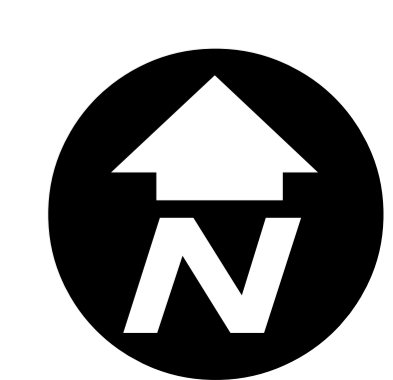
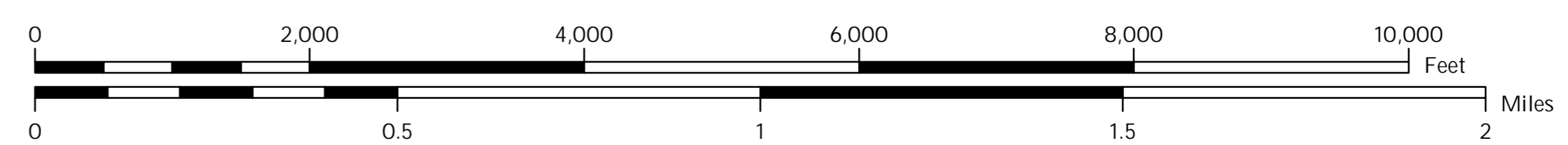
- Municipal Boundary
- Parcel Boundaries
- Riparian Area
- Highlands Open Water Buffers (300ft)
- Riparian Integrity**  
By HUC-14 Subwatershed
  - Moderate
  - High

### Locator Maps



**BOROUGH OF CHESTER**  
MORRIS COUNTY, N.J.

MAP PREPARED BY THE NEW JERSEY  
HIGHLANDS COUNCIL, MAY 25, 2016





# Exhibit 5:

Borough of Chester Highlands Area

Steep Slope Protection Area

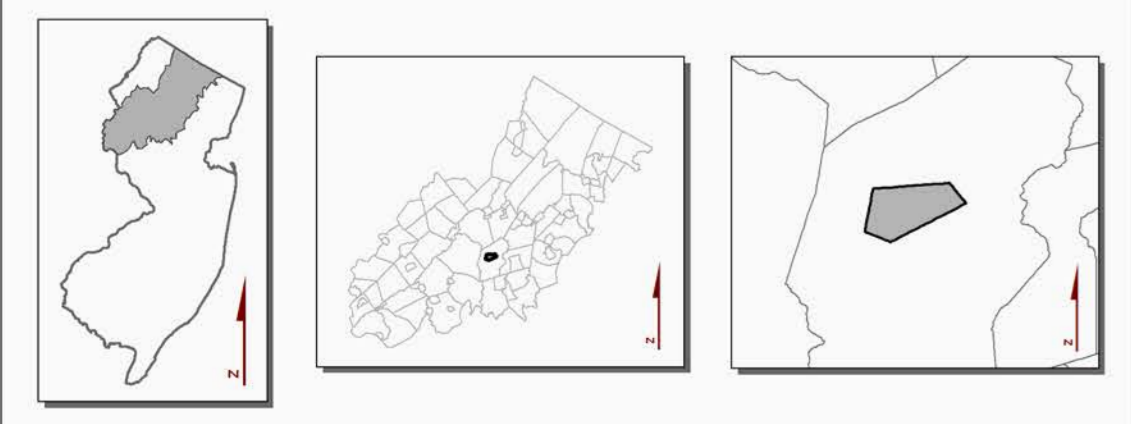
# BOROUGH OF CHESTER, MORRIS COUNTY, NJ



### Legend

- Municipal Boundary
- Parcel Boundaries
- Steep Slope Protection Area
  - Severely Constrained
  - Moderately Constrained
  - Constrained/Limited Constrained

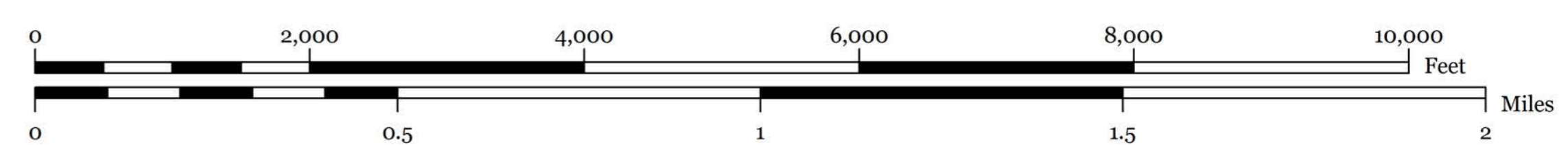
### Locator Maps



BOROUGH OF CHESTER MORRIS COUNTY, N.J.



MAP PREPARED BY THE NEW JERSEY HIGHLANDS COUNCIL, MAY 25, 2016



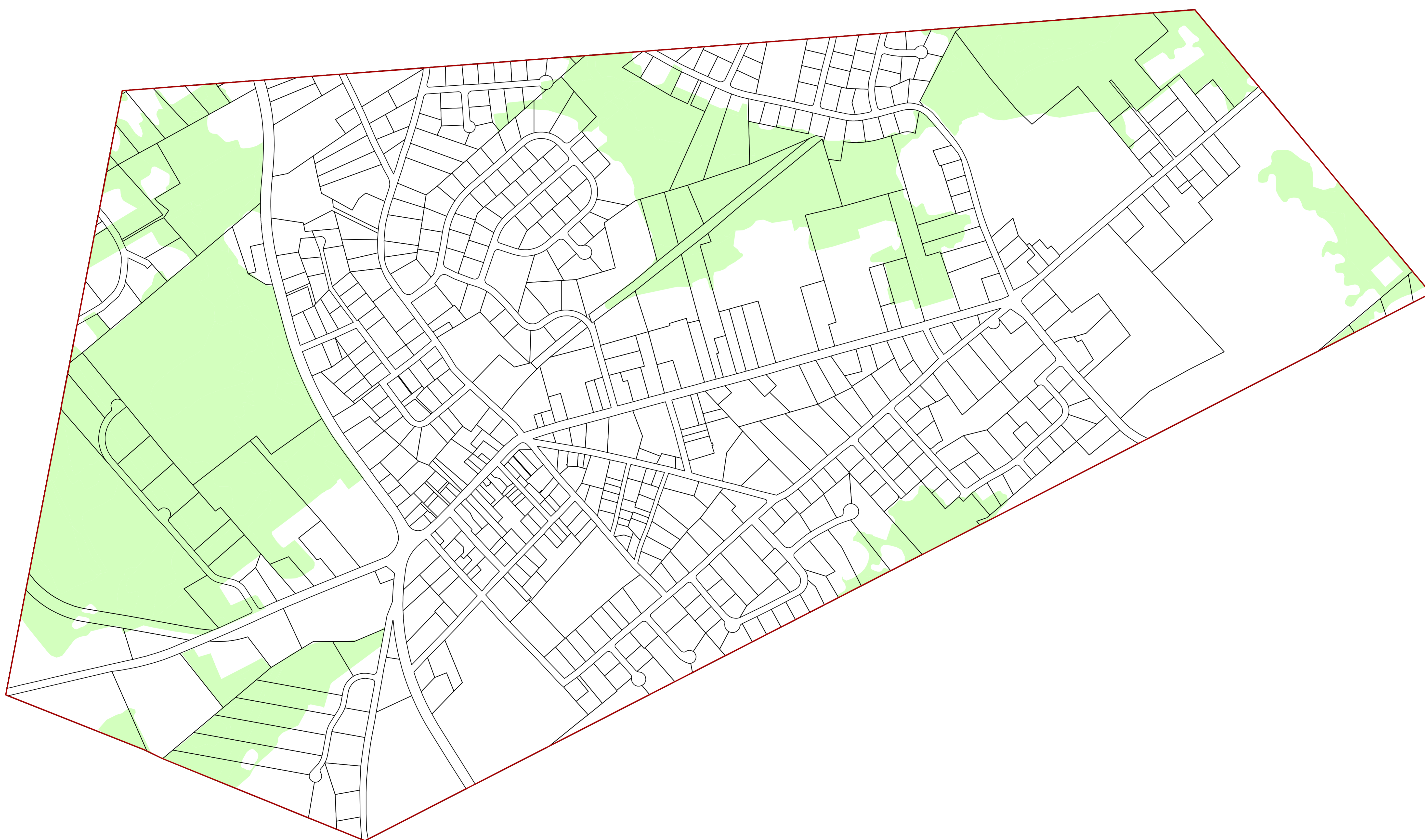


# Exhibit 6:

Borough of Chester Highlands Area

Critical Wildlife Habitat

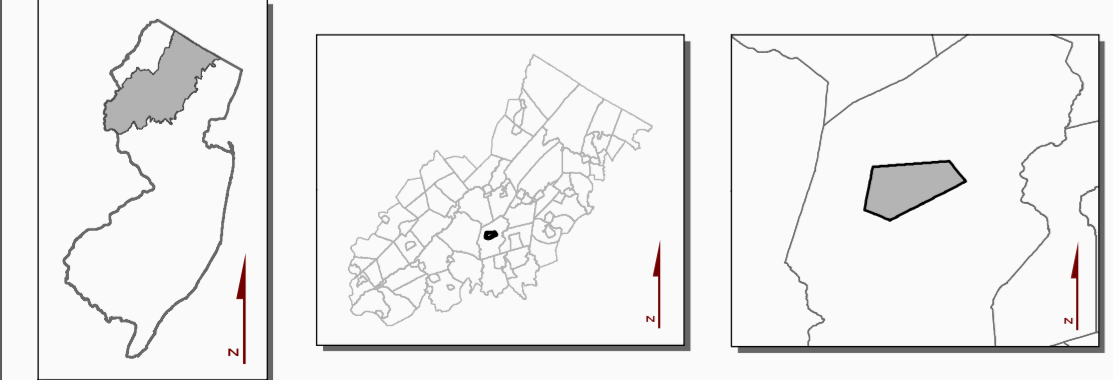
# BOROUGH OF CHESTER, MORRIS COUNTY, NJ




### Legend

- Municipal Boundary
- Parcel Boundaries
- Critical Wildlife Habitat

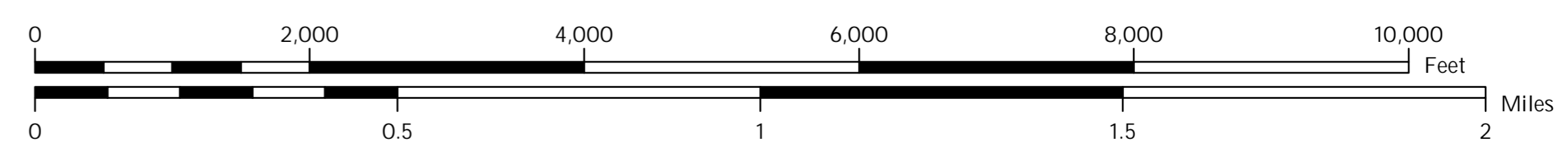
### Locator Maps



**BOROUGH OF CHESTER**  
MORRIS COUNTY, N.J.



MAP PREPARED BY THE NEW JERSEY  
HIGHLANDS COUNCIL, MAY 25, 2016





# Exhibit 7:

# BOROUGH OF CHESTER, HUNTERDON COUNTY, NJ

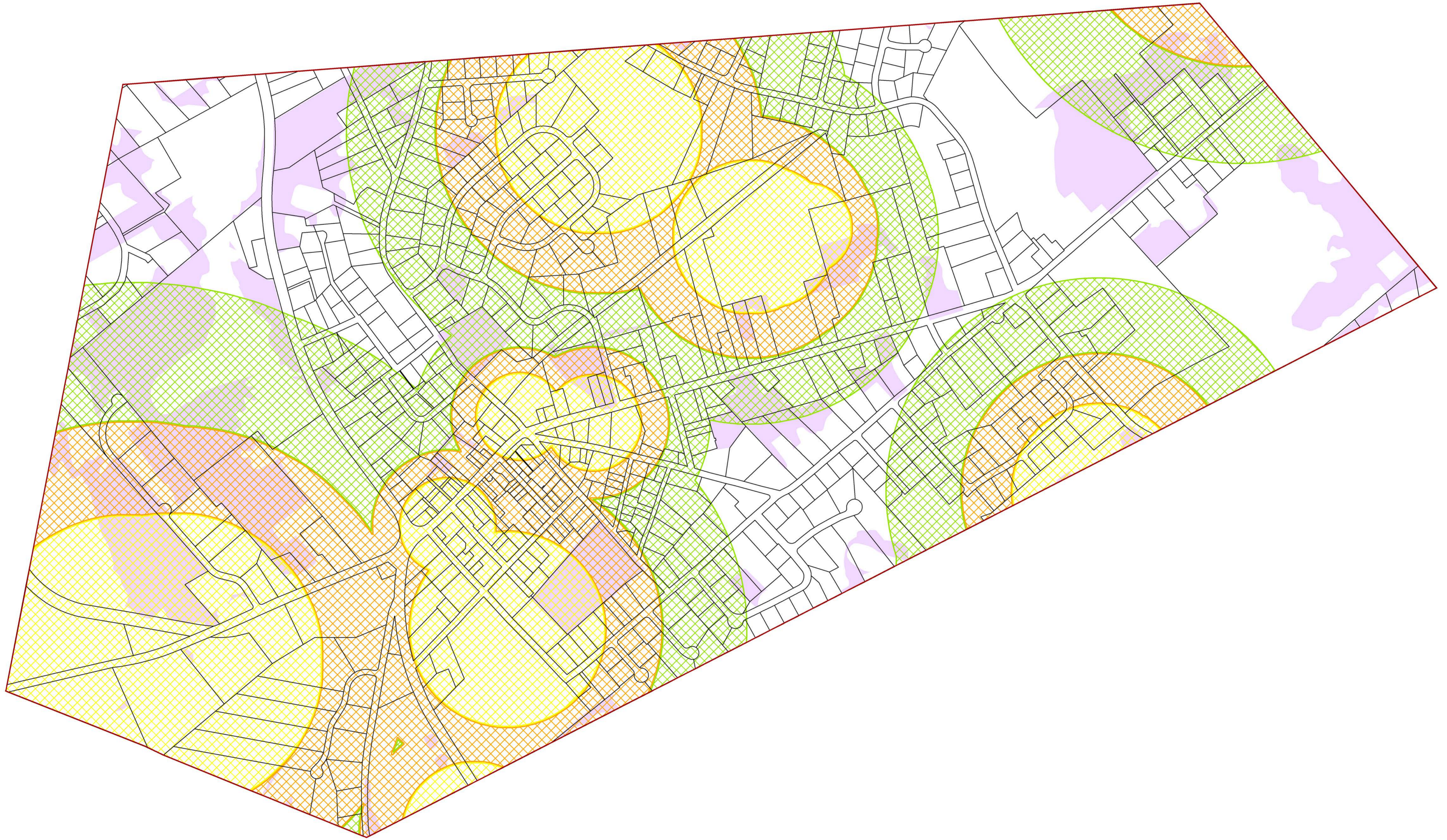


Borough of Chester Highlands Area

Carbonate Rock Area

Prime Ground Water Recharge Area

Wellhead Protection Areas



### Legend

- Municipal Boundary
- Parcel Boundaries
- Carbonate Rock Areas
- Prime Ground Water Recharge Areas
- Wellhead Protection Areas**
  - (Tier 1) 2-Year
  - (Tier 2) 5-Year
  - (Tier 3) 12-Year

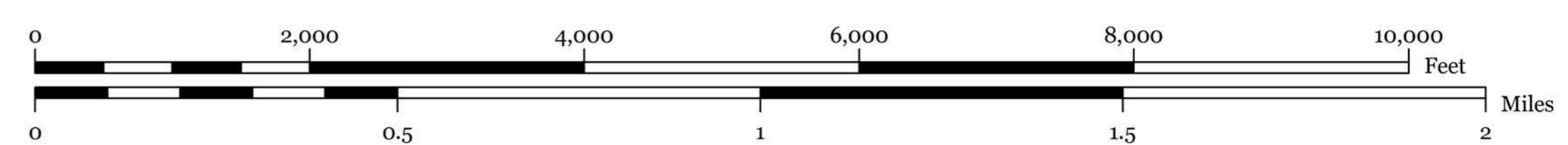
### Locator Maps



BOROUGH OF  
**CHESTER**  
MORRIS COUNTY, N.J.



MAP PREPARED BY THE NEW JERSEY  
HIGHLANDS COUNCIL, MAY 25, 2016



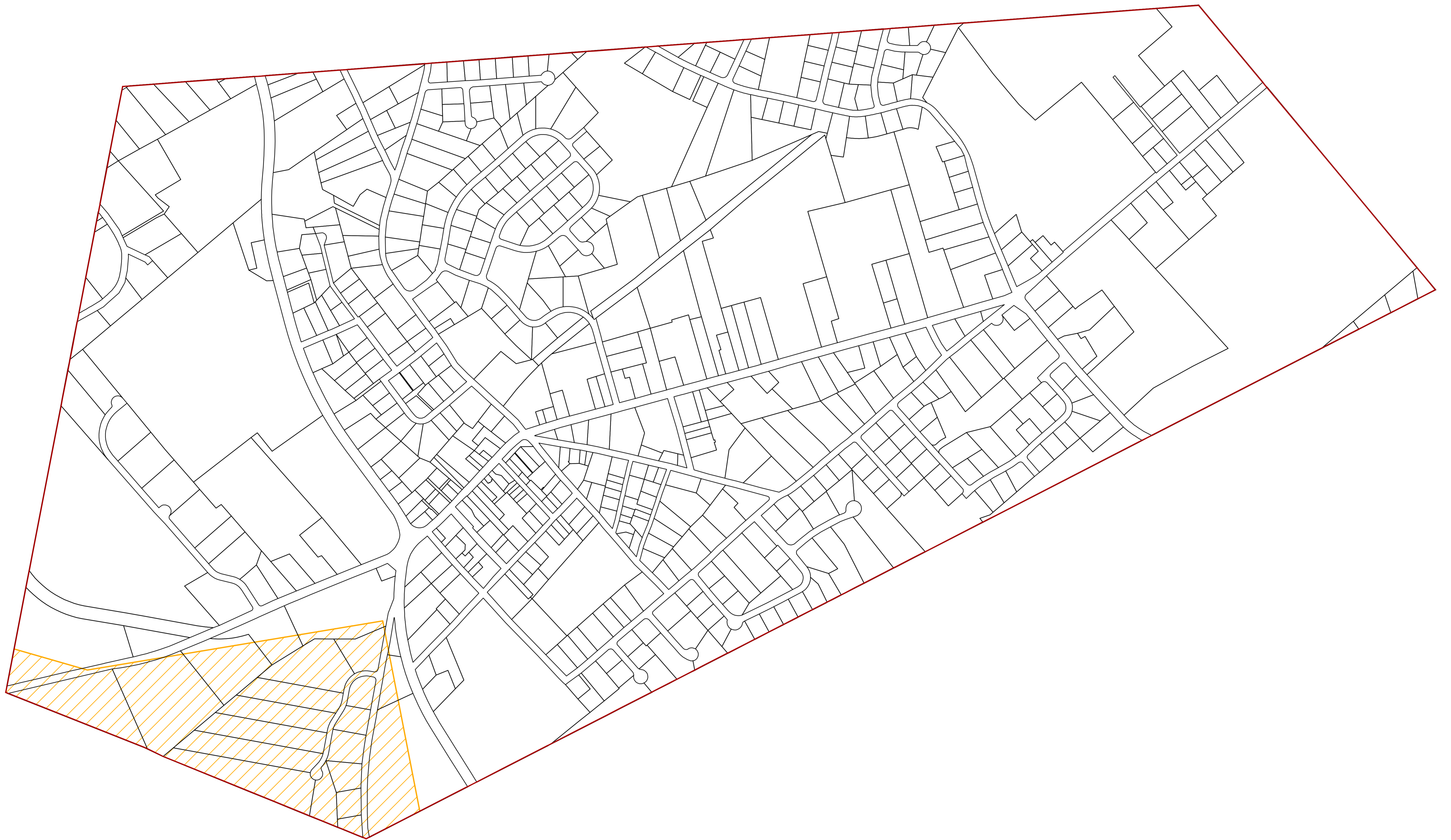


# Exhibit 8:

Borough of Chester Highlands Area

Agricultural Resource Area

# BOROUGH OF CHESTER, MORRIS COUNTY, NJ



### Legend

- Municipal Boundary
- Parcel Boundaries
- Agricultural Resource Area

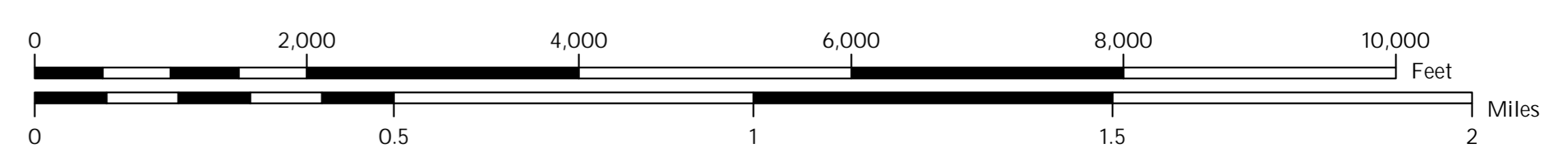
### Locator Maps



**BOROUGH OF CHESTER**  
MORRIS COUNTY, N.J.



MAP PREPARED BY THE NEW JERSEY  
HIGHLANDS COUNCIL, MAY 25, 2016





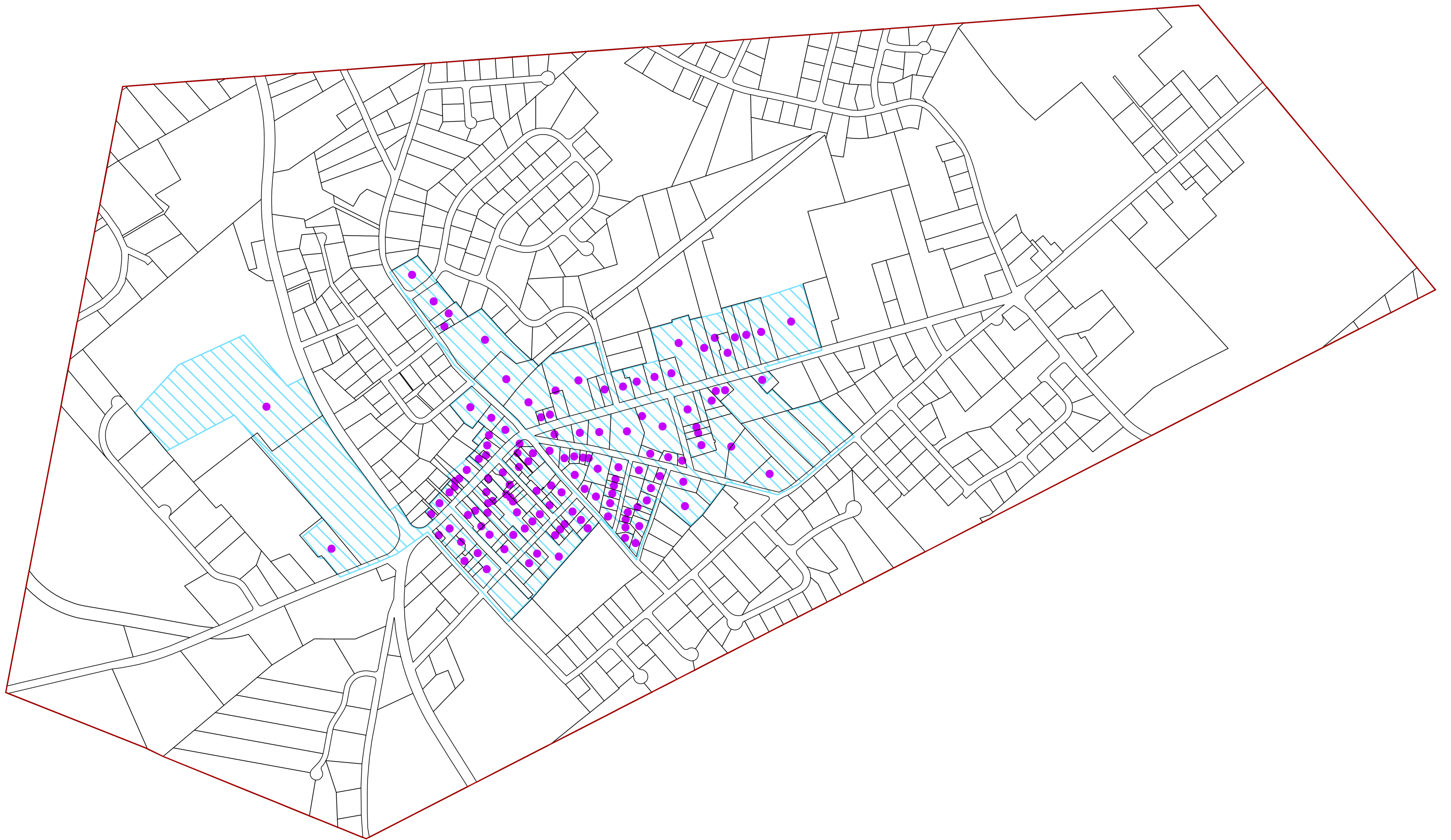
# Exhibit 9:

# BOROUGH OF CHESTER, MORRIS COUNTY, NJ



Borough of Chester Highlands Area

Highlands Historic, Cultural  
and Archaeological Resources  
Highlands Scenic Resources



## Legend

- Municipal Boundary
- Parcel Boundaries
- Scenic Resources
- Historic Properties
- NJ Historic Districts

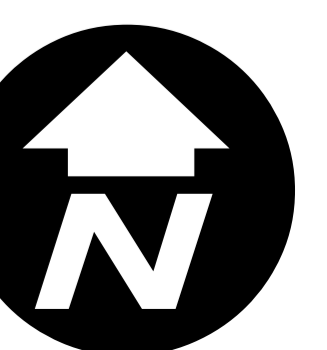
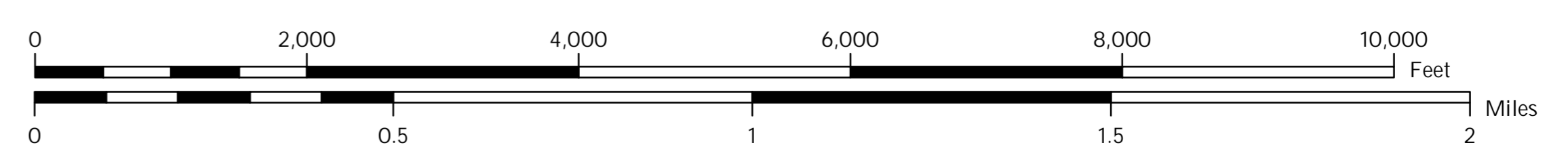
## Locator Maps



BOROUGH OF  
**CHESTER**  
MORRIS COUNTY, N.J.



MAP PREPARED BY THE NEW JERSEY  
HIGHLANDS COUNCIL, MAY 25, 2016





# Exhibit 10:

# BOROUGH OF CHESTER, MORRIS COUNTY, NJ

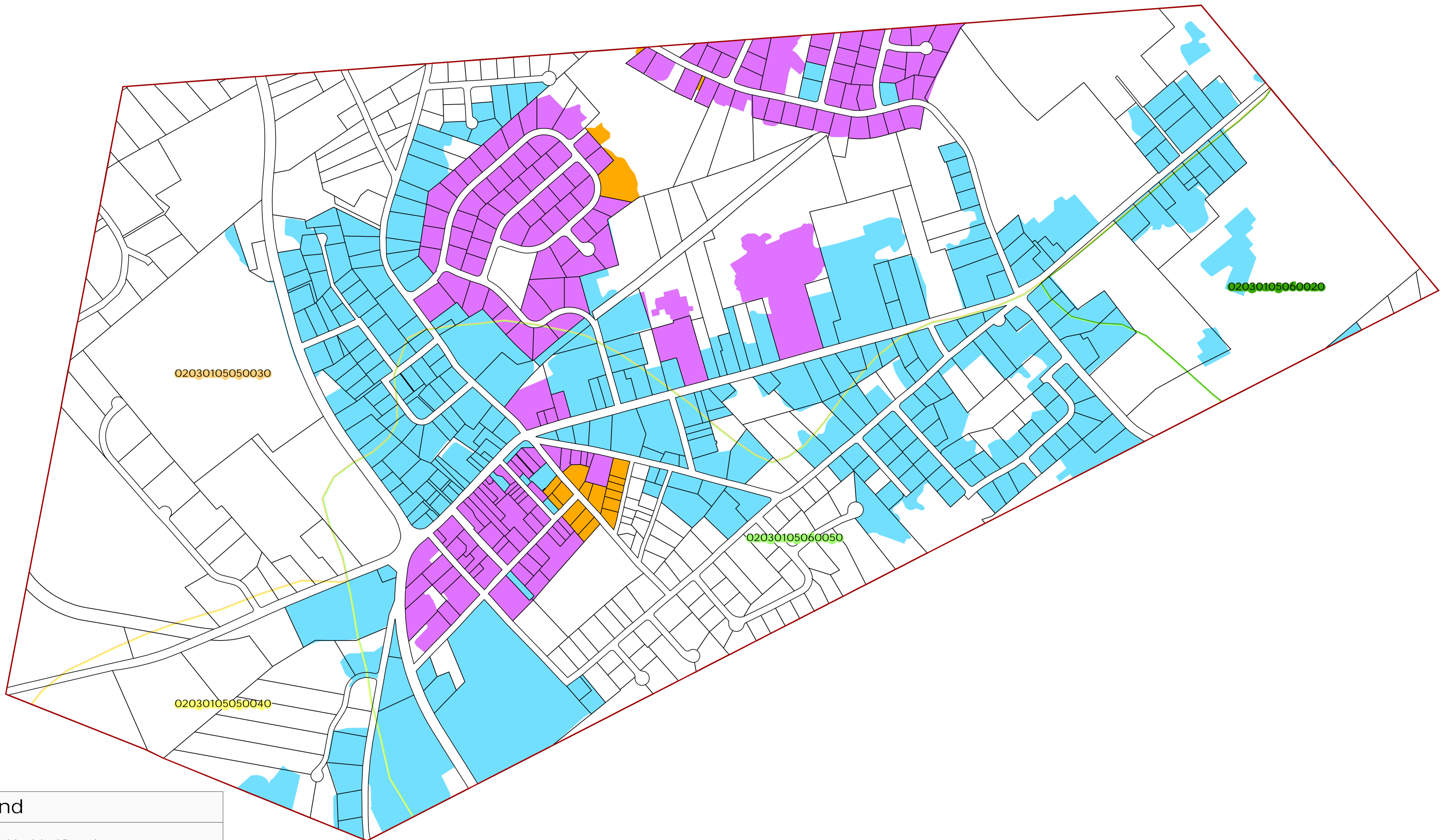


Borough of Chester Highlands Area

Net Water Availability by HUC-14 Subwatershed

Highlands Domestic Sewerage Facilities

Public Community Water Systems



## Legend

- Municipal Boundary
- Parcel Boundaries
- Existing Area Served for:
  - Public Community Water Systems
  - Highlands Domestic Sewerage Facilities
  - Highlands Domestic Sewerage Facilities and Public Community Water Systems
- Net Water Availability By HUC14 Subwatershed  
Million Gallons Per Day (MGD)
  - 0.05 - 0.09
  - 0.00 - 0.04
  - 0.09 - -0.01
  - 0.99 - -0.10

## Locator Maps



**BOROUGH OF CHESTER**  
MORRIS COUNTY, N.J.

MAP PREPARED BY THE NEW JERSEY  
HIGHLANDS COUNCIL, MAY 25, 2016

