

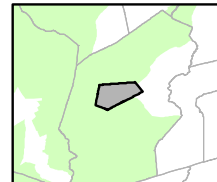
Exhibit A: Chester Borough Highlands Planning Area



Regional Master Plan Overlay Zone Designation

- |  |                             |
|--|-----------------------------|
| <b>Zone</b>                                    | Lakes Greater Than 10 acres |
| Protection                                     | Preservation Area           |
| Conservation                                   | Municipal Boundaries        |
| Existing Community                             |                             |
| <b>Sub-Zone</b>                                |                             |
| Existing Community Environmentally Constrained |                             |
| Conservation Environmentally Constrained       |                             |
| Lake Community                                 |                             |
| Wildlife Management                            |                             |

Chester Borough



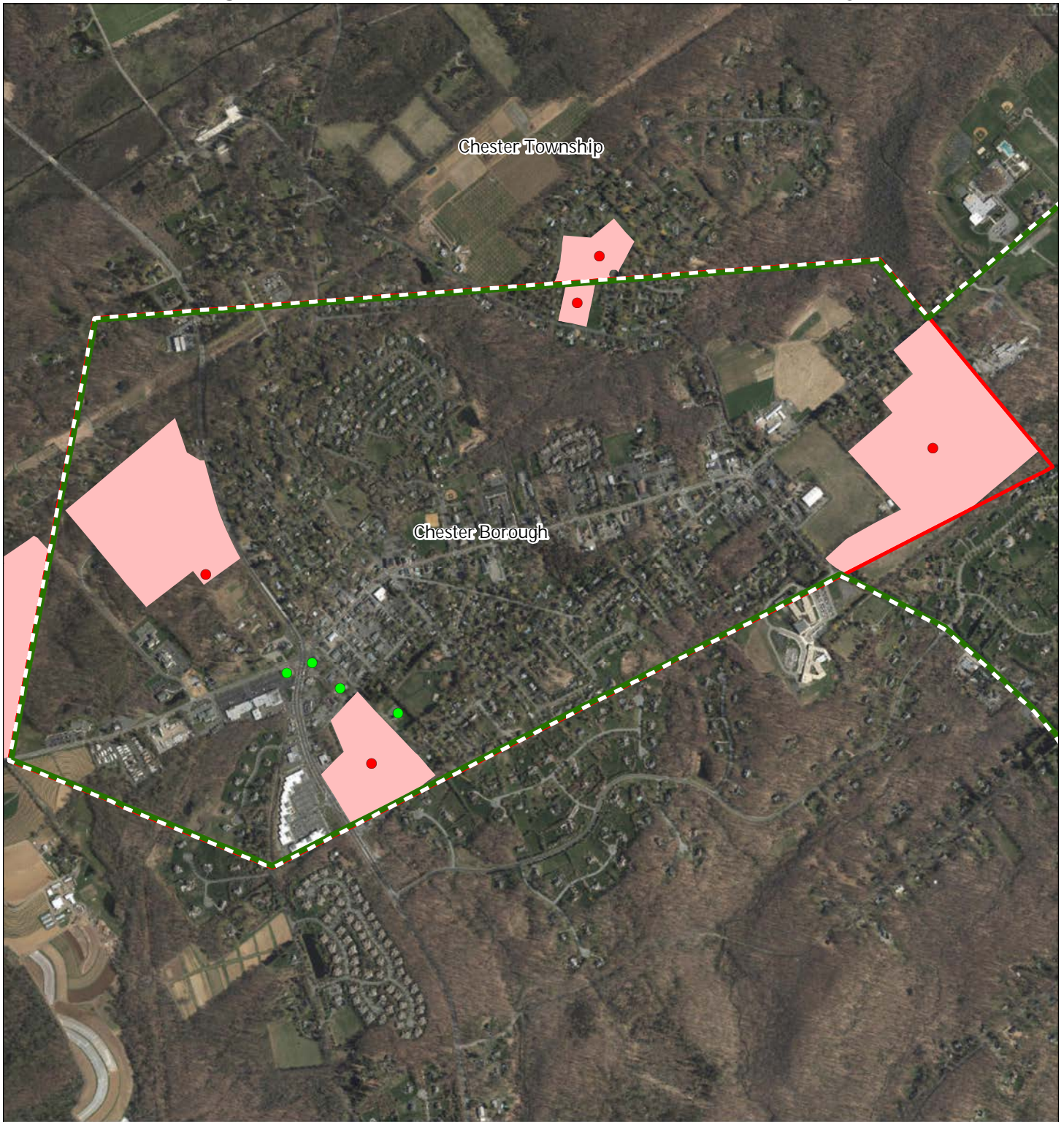
1 inch = 0.261 miles



MAY 2016



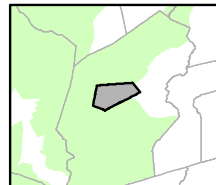
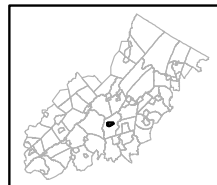
# Exhibit C: Highlands Contaminated Sites Inventory



Highlands Contaminated Site Inventory

Chester Borough

- Tier 1 Sites
- Tier 1 Sites (Polygons)
- Tier 2 Sites
- Preservation Area
- Municipal Boundaries



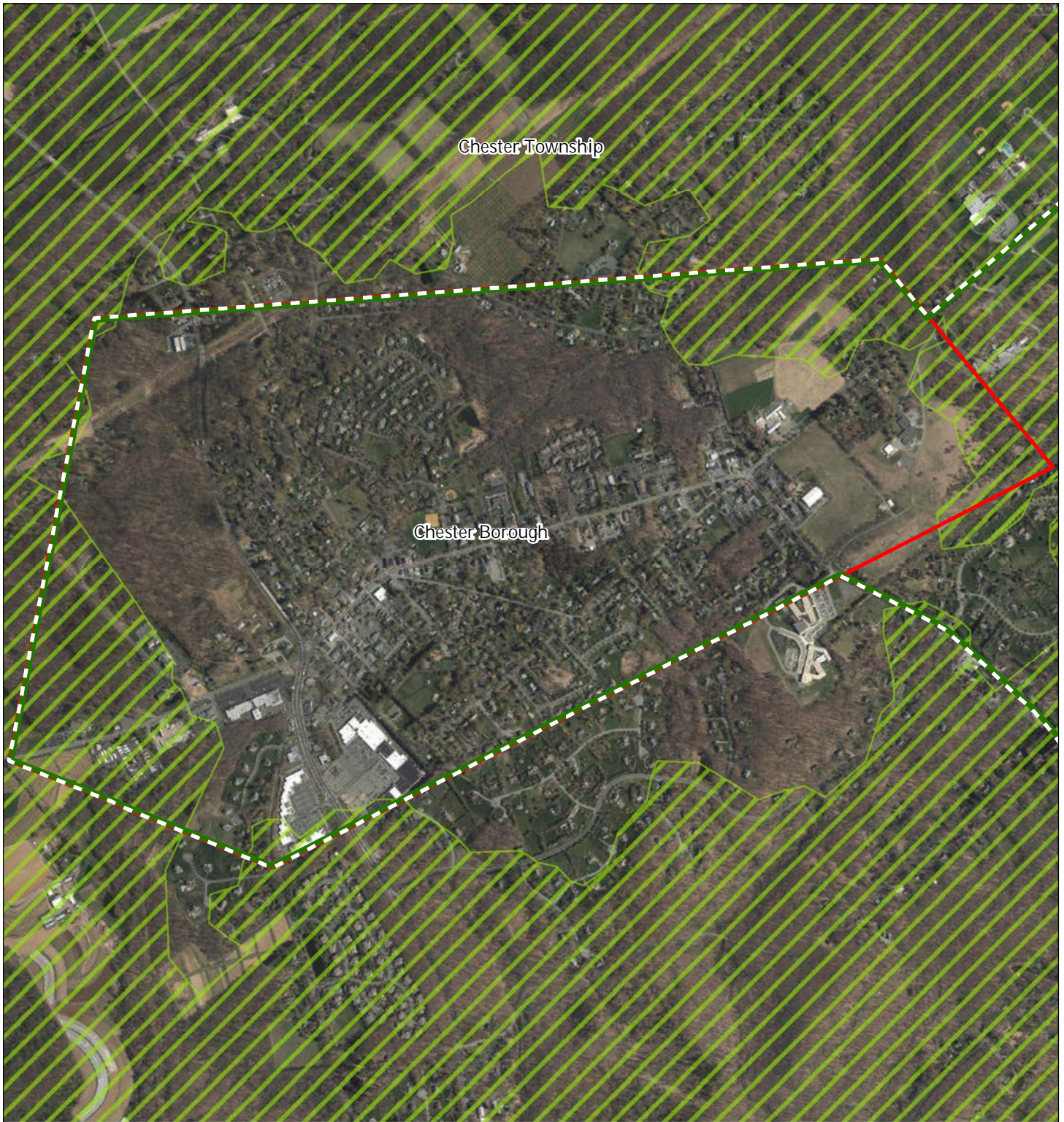
1 inch = 0.261 miles






MAY 2016

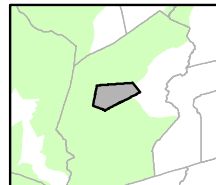
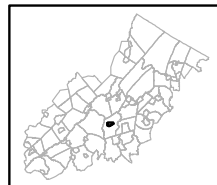


Exhibit E: Forest Resource Area



-  Forest Resource Area
-  Preservation Area
-  Municipal Boundaries

Chester Borough






1 inch = 0.261 miles



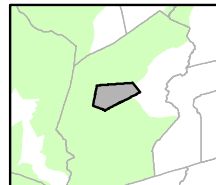
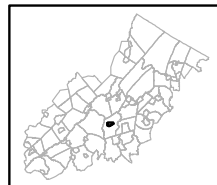


Exhibit F: Total Forest Area



-  Forested Areas
-  Preservation Area
-  Municipal Boundaries

Chester Borough

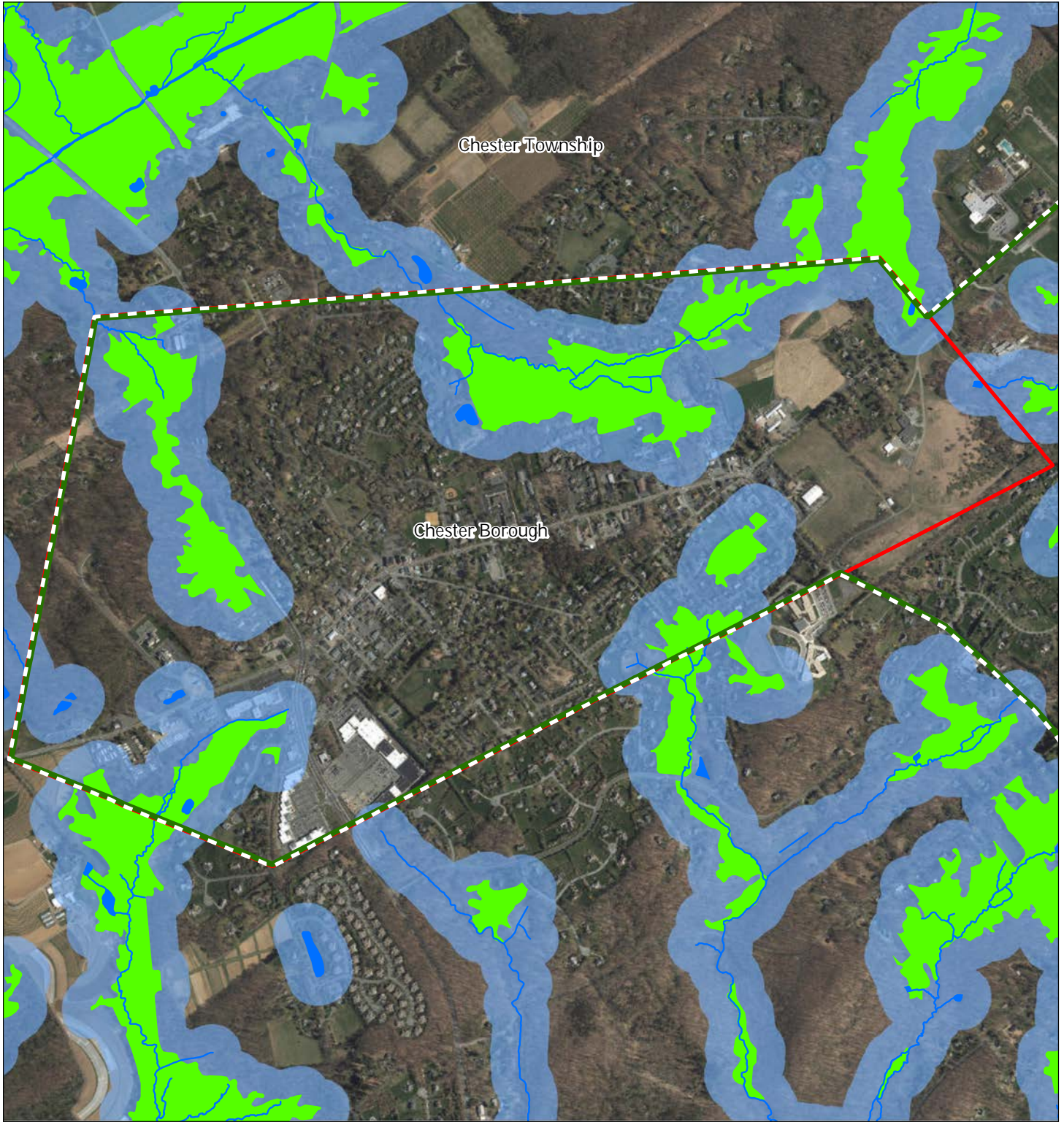


1 inch = 0.261 miles



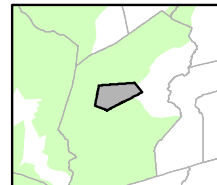
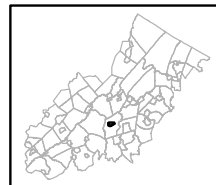


# Exhibit H: Highlands Open Waters



-  Highlands Open Water Buffers (300ft)
-  Streams
-  Wetlands
-  Lakes & Ponds
-  Preservation Area
-  Municipal Boundaries

## Chester Borough



1 inch = 0.261 miles

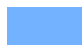




MAY 2016

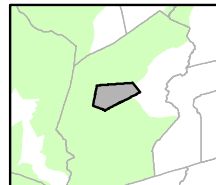
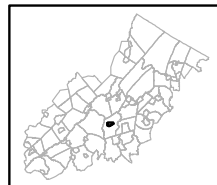


# Exhibit I: Highlands Riparian Areas



-  Riparian Area
-  Preservation Area
-  Municipal Boundaries

## Chester Borough

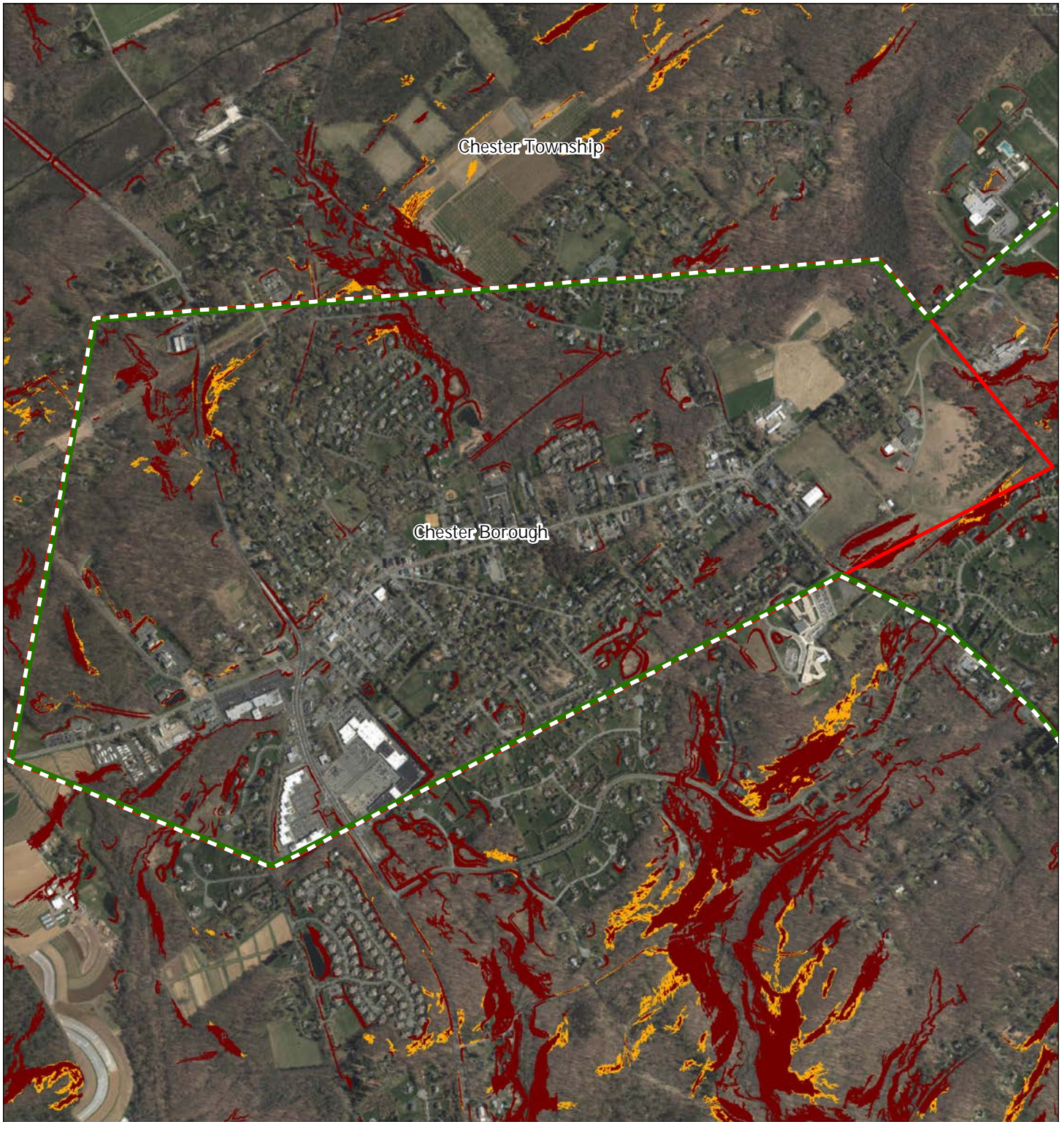


1 inch = 0.261 miles









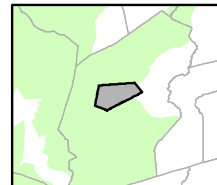
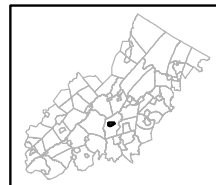
# Exhibit L: Steep Slope Protection Areas



### Steep Slopes

-  Moderate
-  Severe
-  Preservation Area
-  Municipal Boundaries

### Chester Borough






1 inch = 0.261 miles



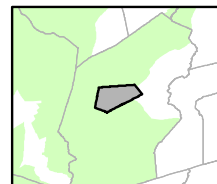
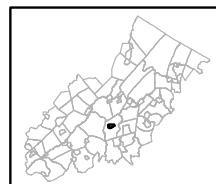


# Exhibit M: Critical Wildlife Habitat



-  Critical Wildlife Habitat
-  Preservation Area
-  Municipal Boundaries

## Chester Borough

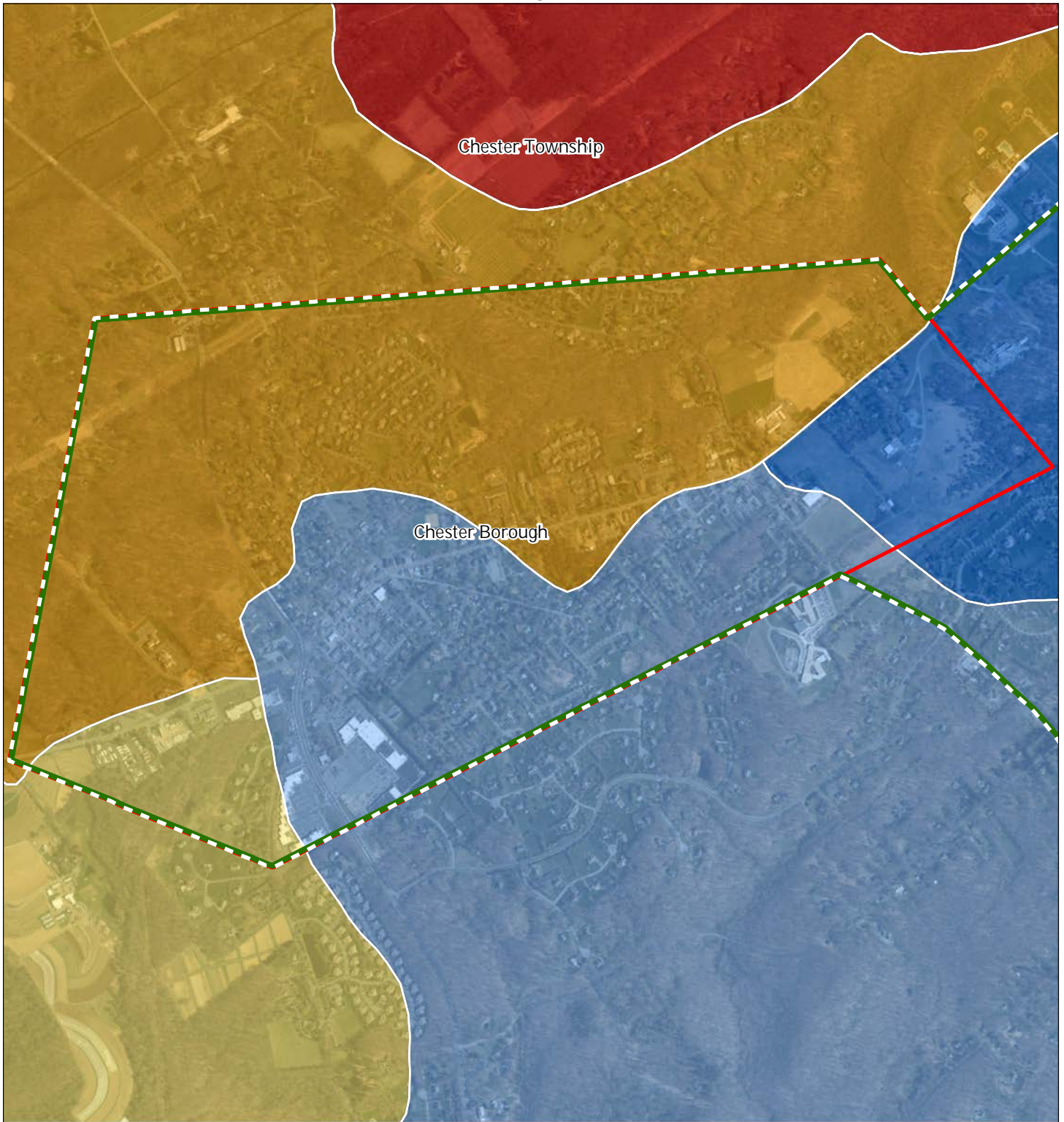


1 inch = 0.261 miles





# Exhibit R: Net Water Availability



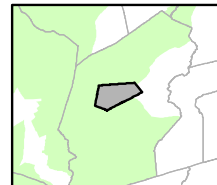
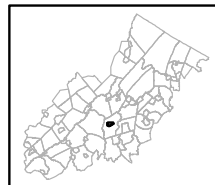
Net Water Availability By HUC14

Million Gallons Per Day (MGD)

- 0.10 - 0.39
- 0.05 - 0.09
- 0.00 - 0.04
- 0.09 - 0.00
- 0.99 - -0.10
- 7.10 - -1.00

- Preservation Area
- Municipal Boundaries

Mahwah Township



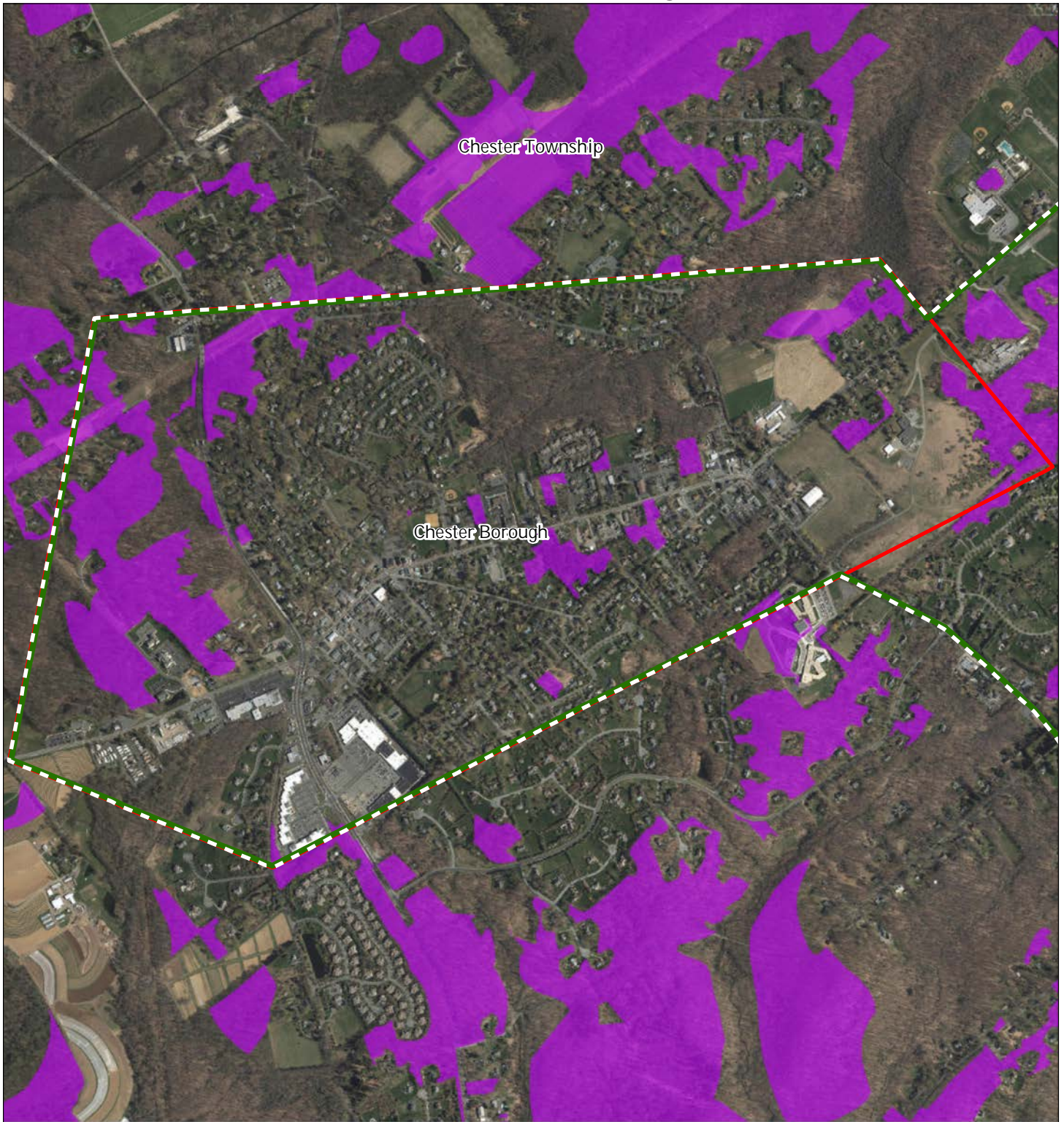
1 inch = 0.261 miles






MAY 2016

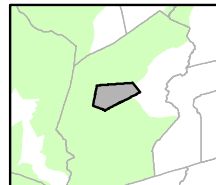
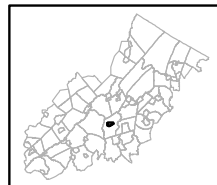


# Exhibit S: Prime Ground Water Recharge Areas



-  Prime Ground Water Recharge Areas
-  Preservation Area
-  Municipal Boundaries

## Chester Borough

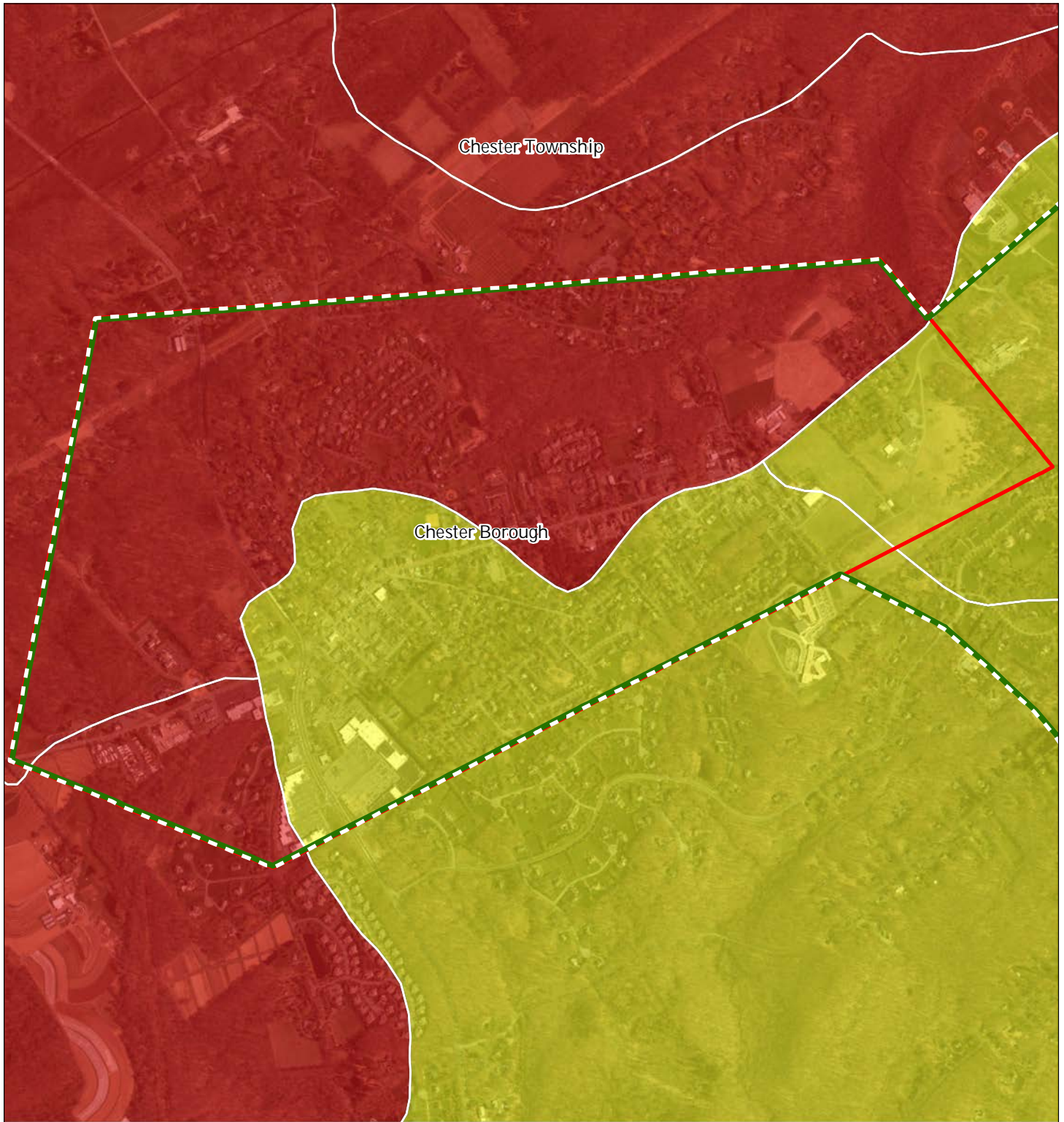


1 inch = 0.261 miles











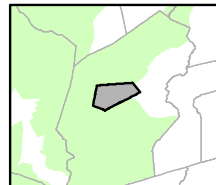
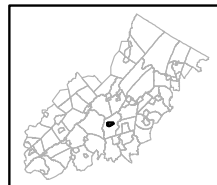
# Exhibit T: HUC 14s on NJDEP Impaired Waters List



Impaired Waters Overall Assessment by HUC14 Subwatershed

-  *Non Impacted*
-  *Insufficient Data Available*
-  *Moderate*
-  *Water Quality Impaired*
-  Preservation Area
-  Municipal Boundaries

## Chester Borough



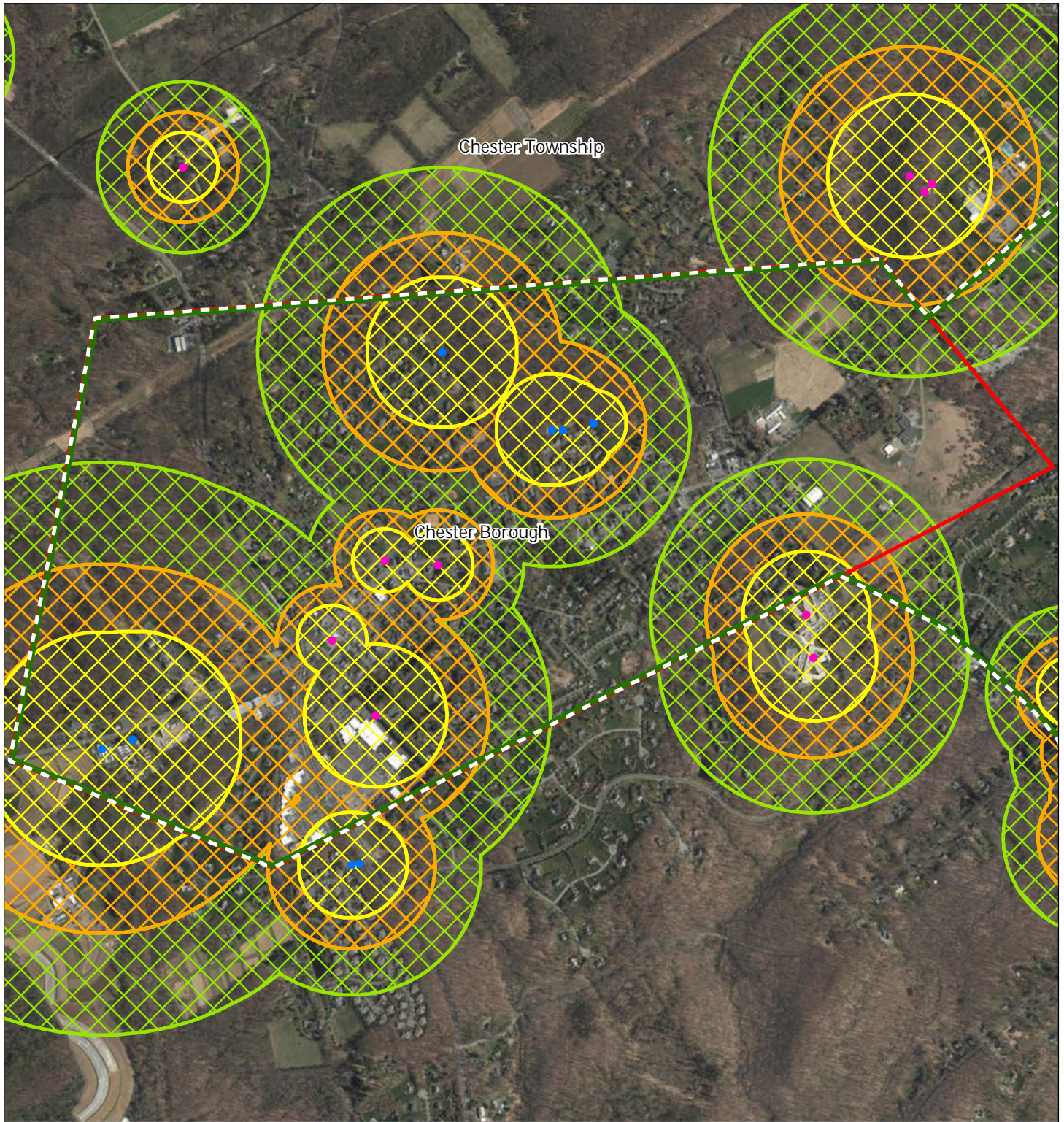
1 inch = 0.261 miles



MAY 2016



Exhibit U: Wellhead Protection Areas



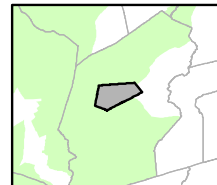
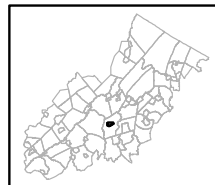
- Public Community Wells
- Public Non-Community Wells

Wellhead Protection Areas

- 2-Year Tier
- 5-Year Tier
- 12-Year Tier

- Preservation Area
- Municipal Boundaries

Chester Borough






1 inch = 0.261 miles



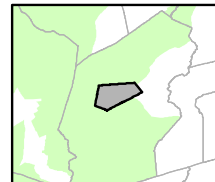
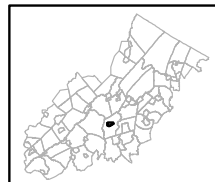


# Exhibit V: Public Community Water Systems



-  Public Community Water Systems
-  Preservation Area
-  Municipal Boundaries

Mahwah Township



1 inch = 0.261 miles








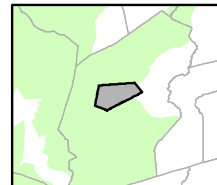
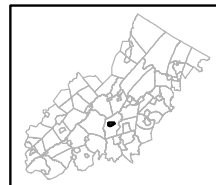
# Exhibit W: Highlands Domestic Sewerage Facilities



## Highlands Domestic Sewerage Facilities

-  Existing Area Served
-  Preservation Area
-  Municipal Boundaries

## Chester Borough



1 inch = 0.261 miles

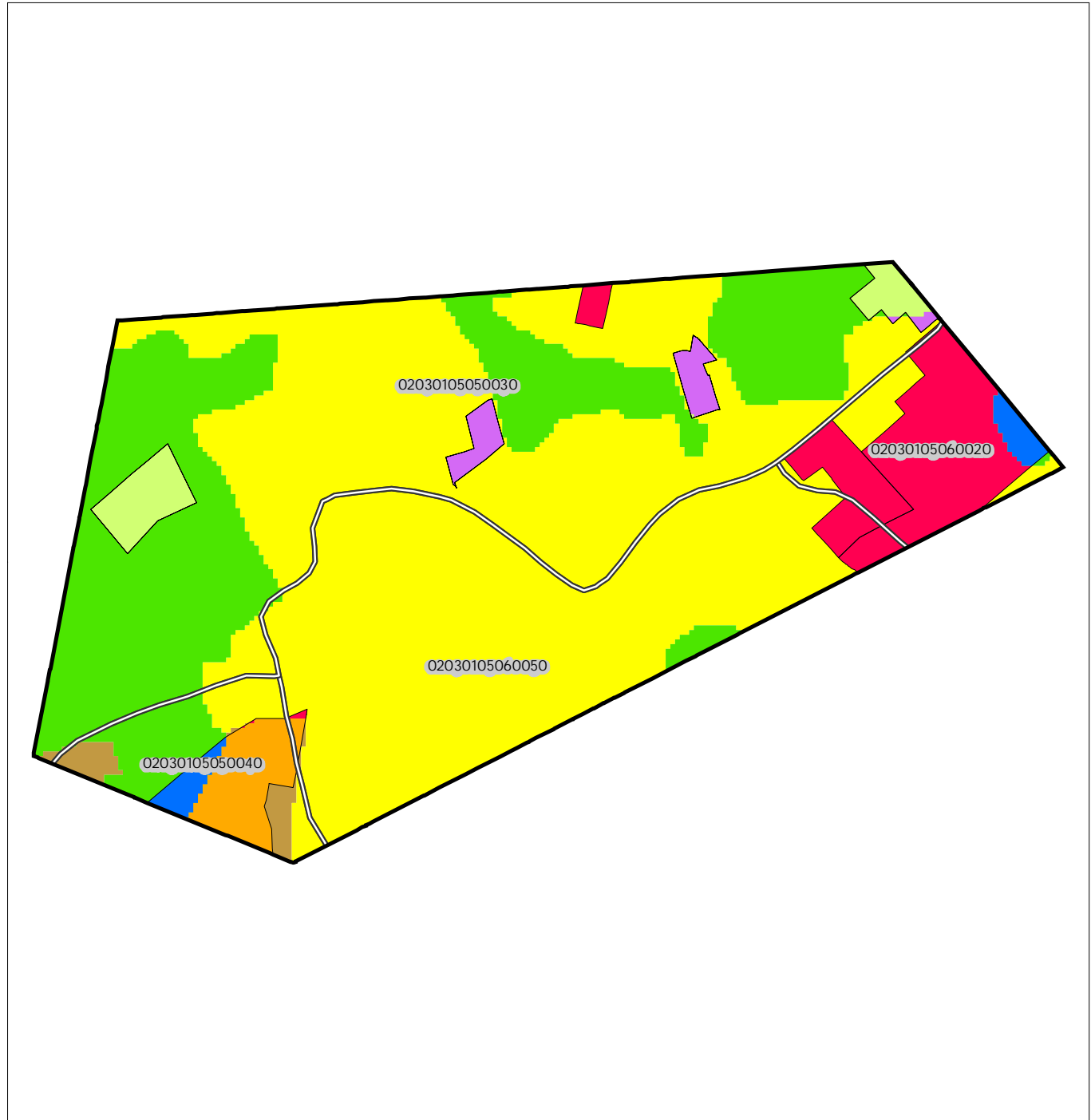




# Exhibit X: Septic System Yield

Figure 1: Municipal Build-out Report Septic System Yield by HUC14 and LUCM Zone \*

CHESTER BOROUGH



Potential Undevelopable Lands	Potential Oversized Lots	Potential Developable Lands	Potential Redevelopable Lands
Conservation Zone	in Conservation Zone	in Conservation Zone	in Conservation Zone
Existing Community Zone	in Existing Community Zone	in Existing Community Zone	in Existing Community Zone
Protection Zone	in Protection Zone	in Protection Zone	in Protection Zone
Preservation Area	in Preservation Area	in Preservation Area	in Preservation Area

HUC14 Subwatersheds     
 HUC14 ID Number

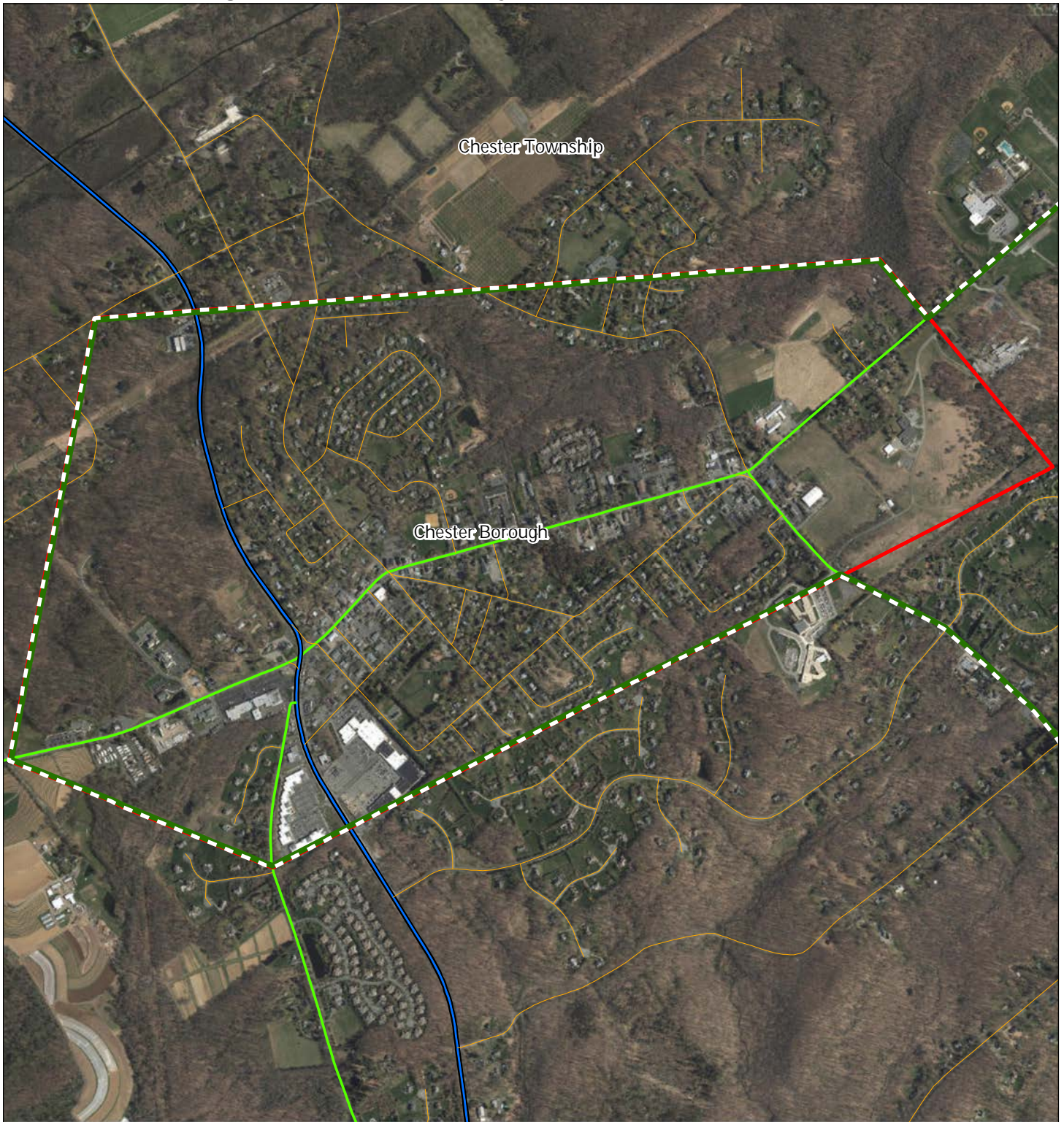
0 0.25 0.5 Miles

Highlands Council  
New Jersey


\* Refer to Table 1 for Septic System Yield values, indexed by HUC14 ID




# Exhibit Y: Highlands Roadway Network




## Roadway Network


 Interstate Highways

 U.S. Routes

 State Routes

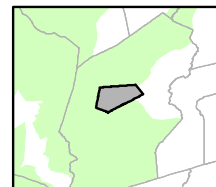
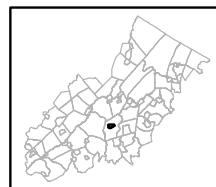
 County Routes

 Local Routes

 Preservation Area

 Municipal Boundaries

## Chester Borough



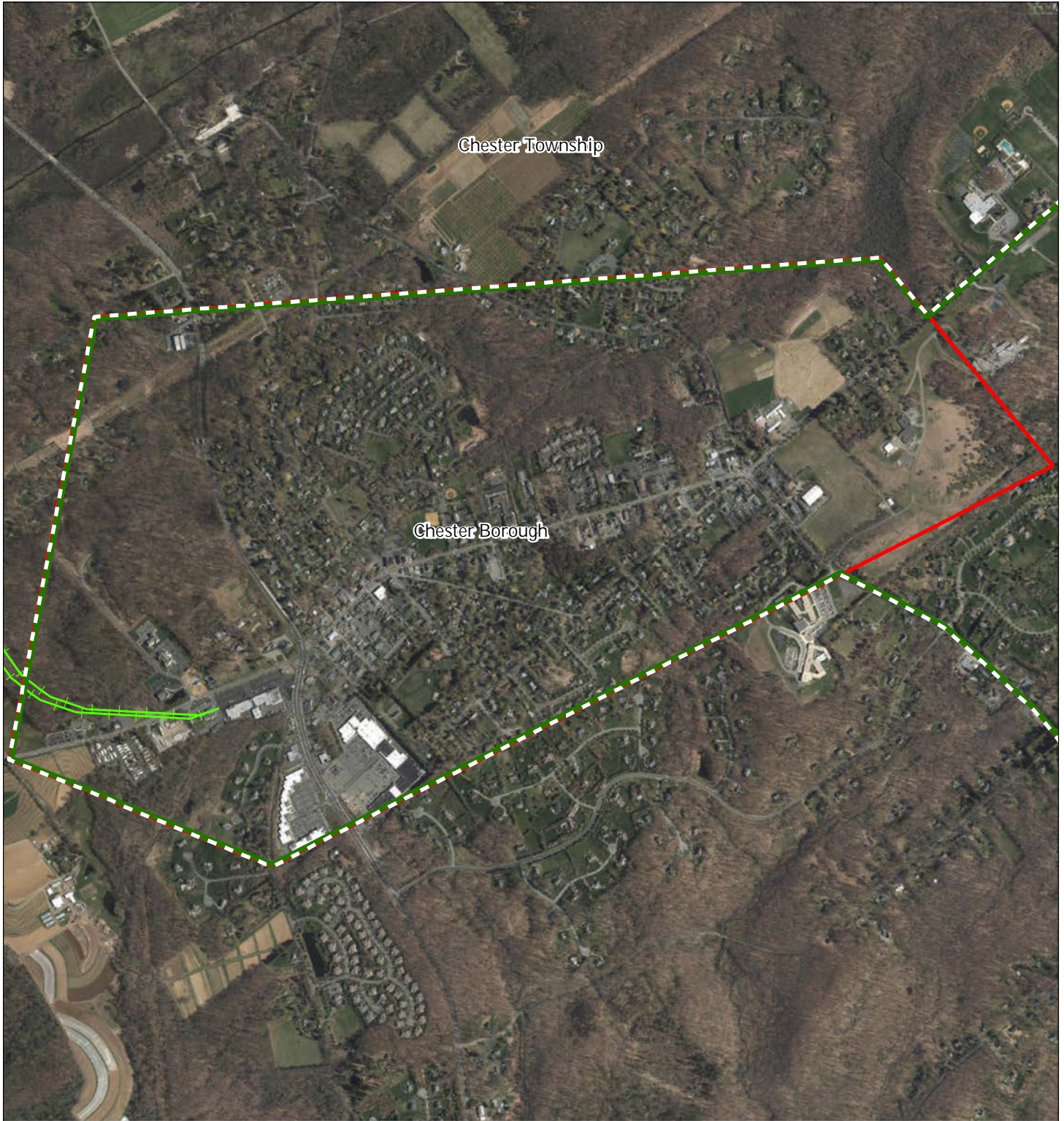
1 inch = 0.261 miles



MAY 2016

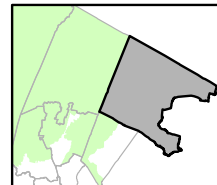
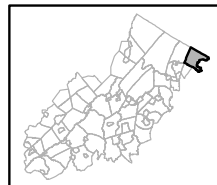


# Exhibit Z: Highlands Transit Network



- |   |                        |
|---|------------------------|
| <b>Rail Network</b>                         | ● Rail Stations        |
| — <i>Boonton Line</i>                       | ■ Park and Ride Sites  |
| — <i>Main Line &amp; Bergen County Line</i> | — Private Bus Lines    |
| — <i>Morris and Essex Line</i>              | — NJ Transit Bus Lines |
| — <i>Raritan Valley Line</i>                | ✈ Airports             |
| <b>Freight Rail Lines</b>                   |                        |
| — <i>Freight Rail Lines</i>                 |                        |
| — <i>Abandoned Freight Rail</i>             |                        |

## Chester Borough



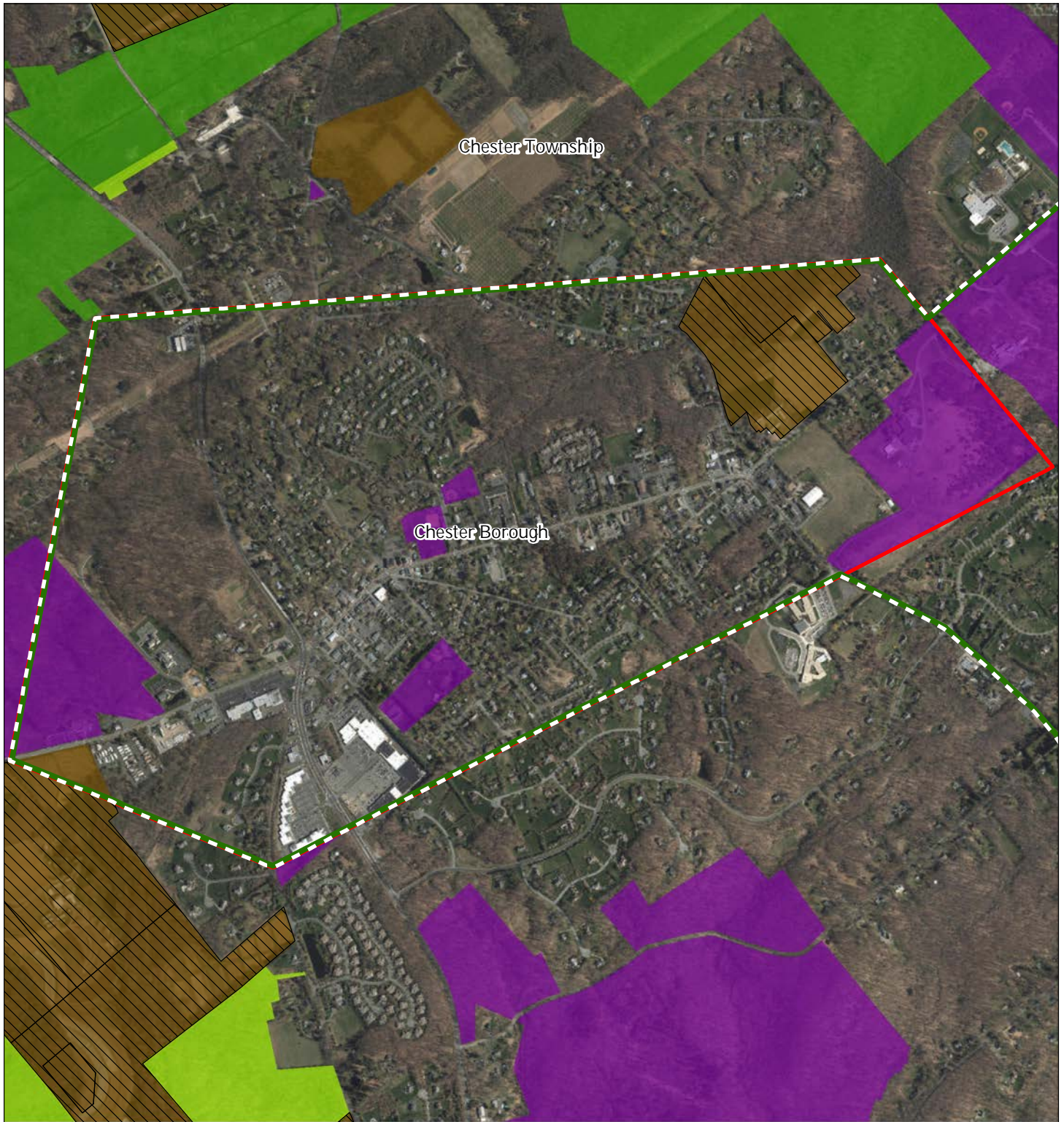
1 inch = 0.261 miles



MAY 2016

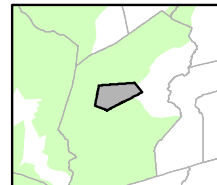
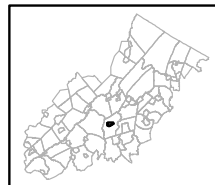


Exhibit AA: Preserved Lands



- |   |                               |
|---|-------------------------------|
| <b>Preserved Lands</b>                  | <b>Conservation Easements</b> |
| Federal Open Space                      | Green Acres                   |
| State Open Space                        | <b>SADC Easements</b>         |
| County Open Space                       | SADC Final                    |
| Municipal Open Space                    | SADC Preserved                |
| Non-Profit/Private Open Space           | Municipal Boundaries          |
| Water Supply Watershed Lands            | Preservation Area             |
| Preserved Farmland                      |                               |
| Highlands Transfer of Development Lands |                               |

Chester Borough



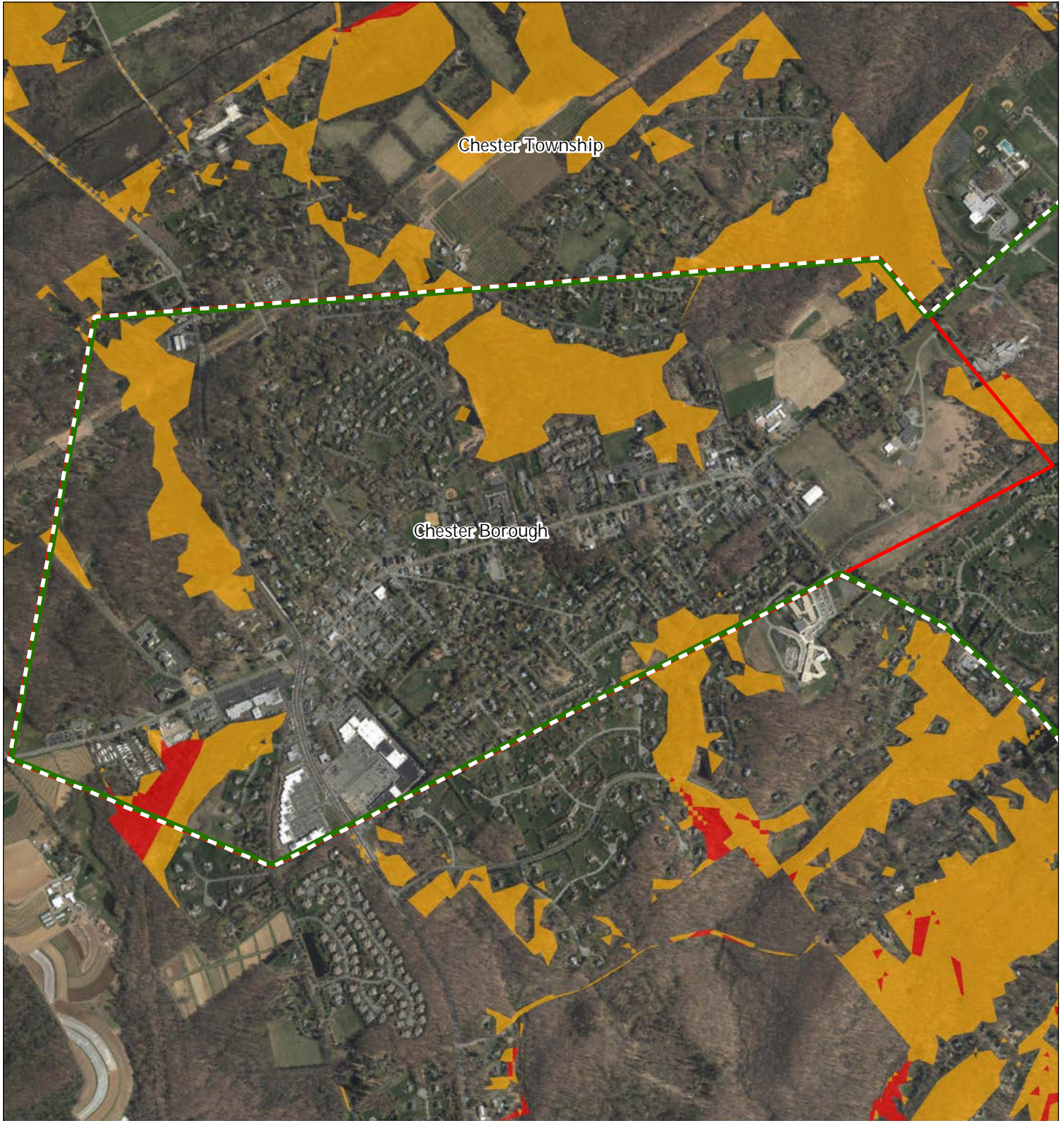
1 inch = 0.261 miles







MAY 2016



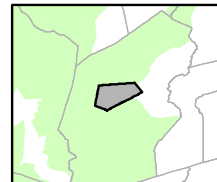
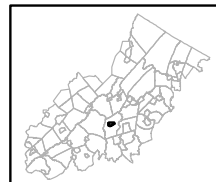
# Exhibit BB: Highlands Conservation Priority Areas



### Conservation Priority Area

-  Moderate
-  High
-  Preservation Area
-  Municipal Boundaries

### Chester Borough

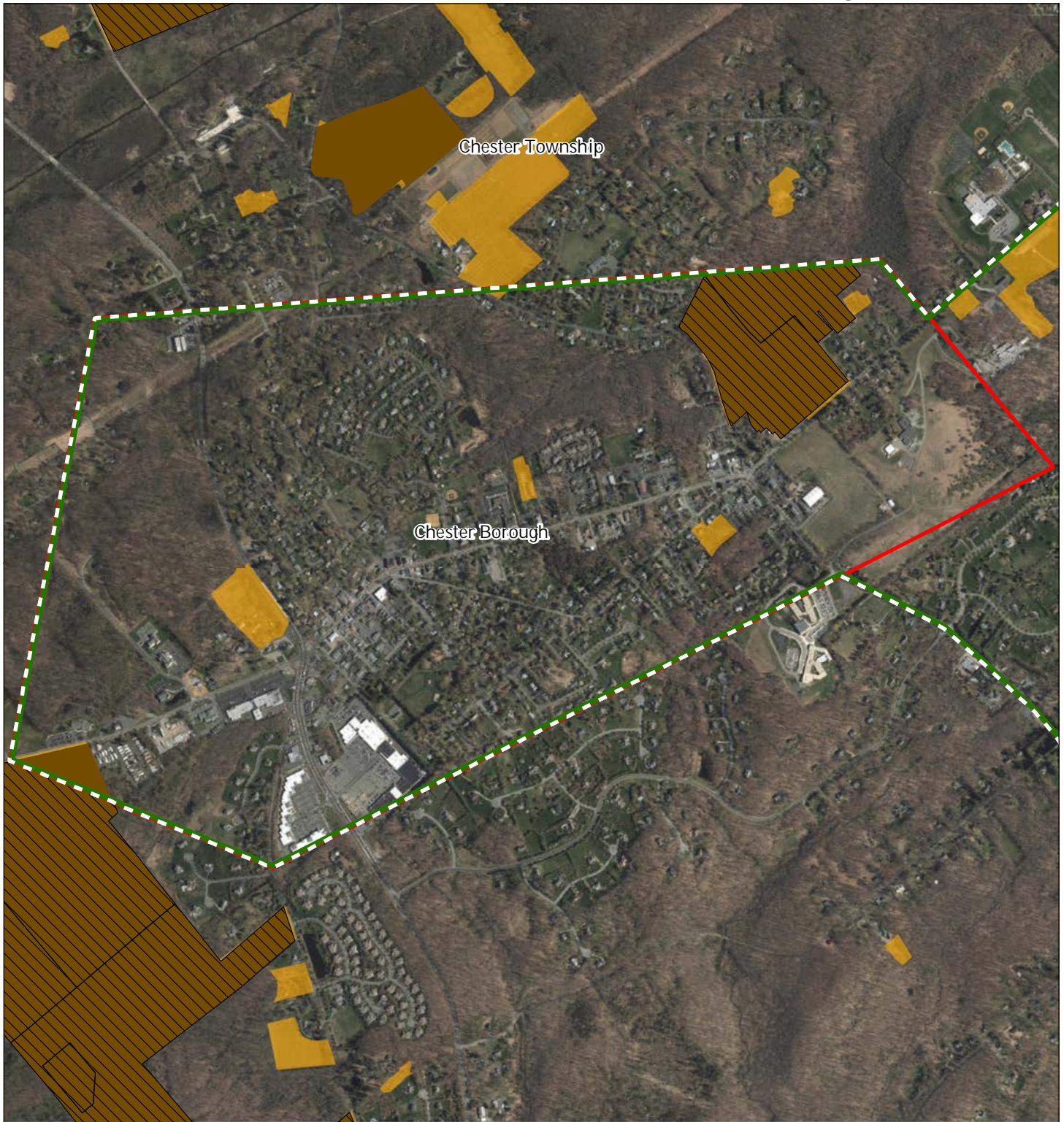


1 inch = 0.261 miles





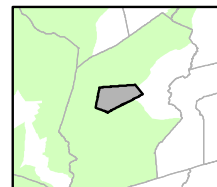
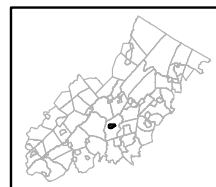
Exhibit DD: Preserved Farms, SADC Easements, All Agricultural Uses



SADC Easements

-  *SADC Final*
-  Preservation Area
-  *SADC Preserved*
-  Municipal Boundaries
-  Preserved Farmland
-  Agriculture Uses

Chester Borough



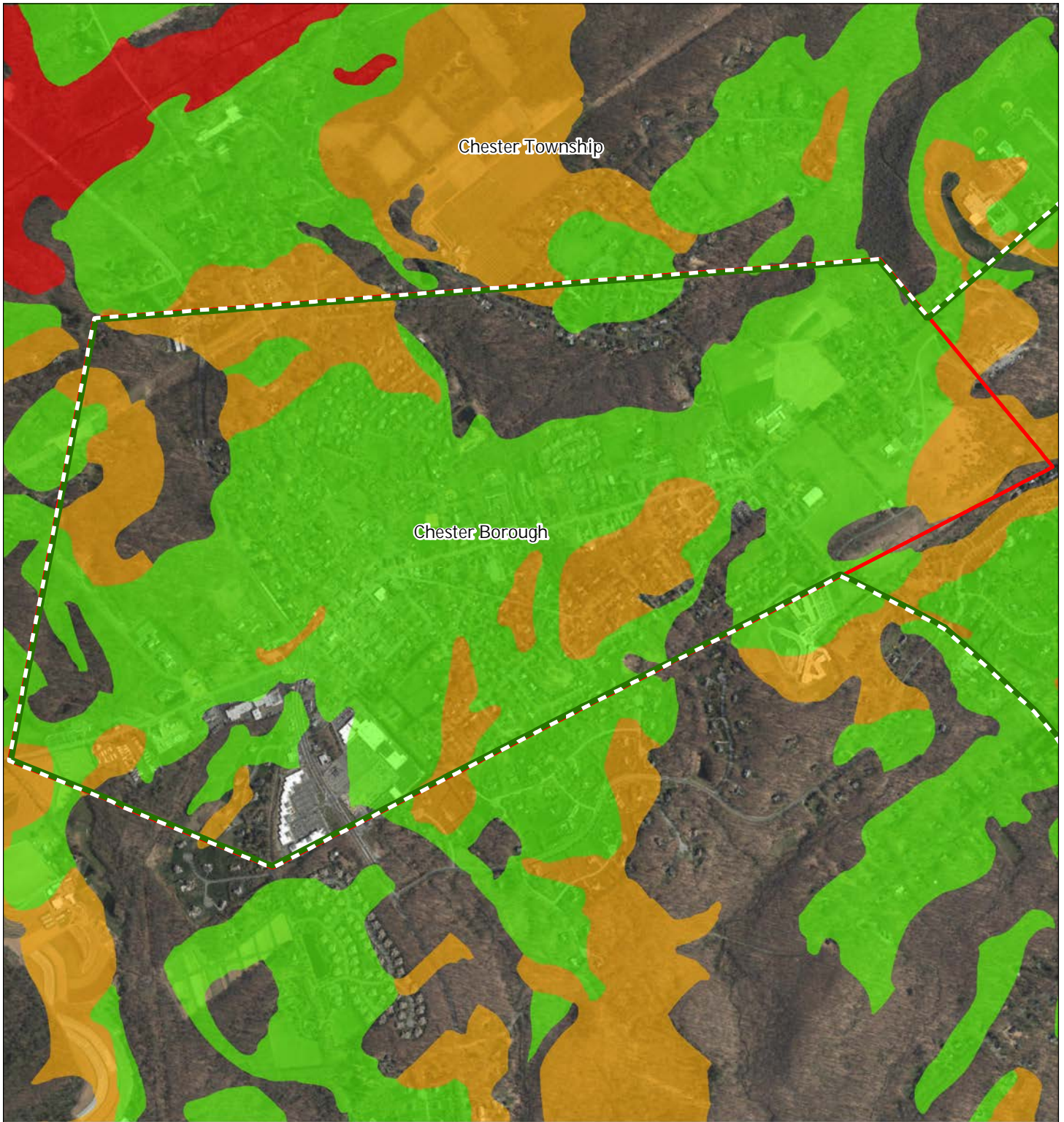
1 inch = 0.261 miles



MAY 2016



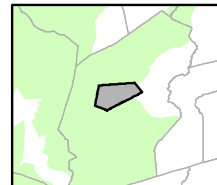
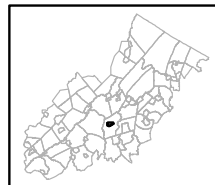
# Exhibit EE: Important Farmland Soils



### Important Farmland Soils

-  *Prime Farmland*
-  *Farmland of Local Importance*
-  *Farmland of Statewide Importance*
-  *Farmland of Unique Importance*
-  Preservation Area
-  Municipal Boundaries

### Chester Borough



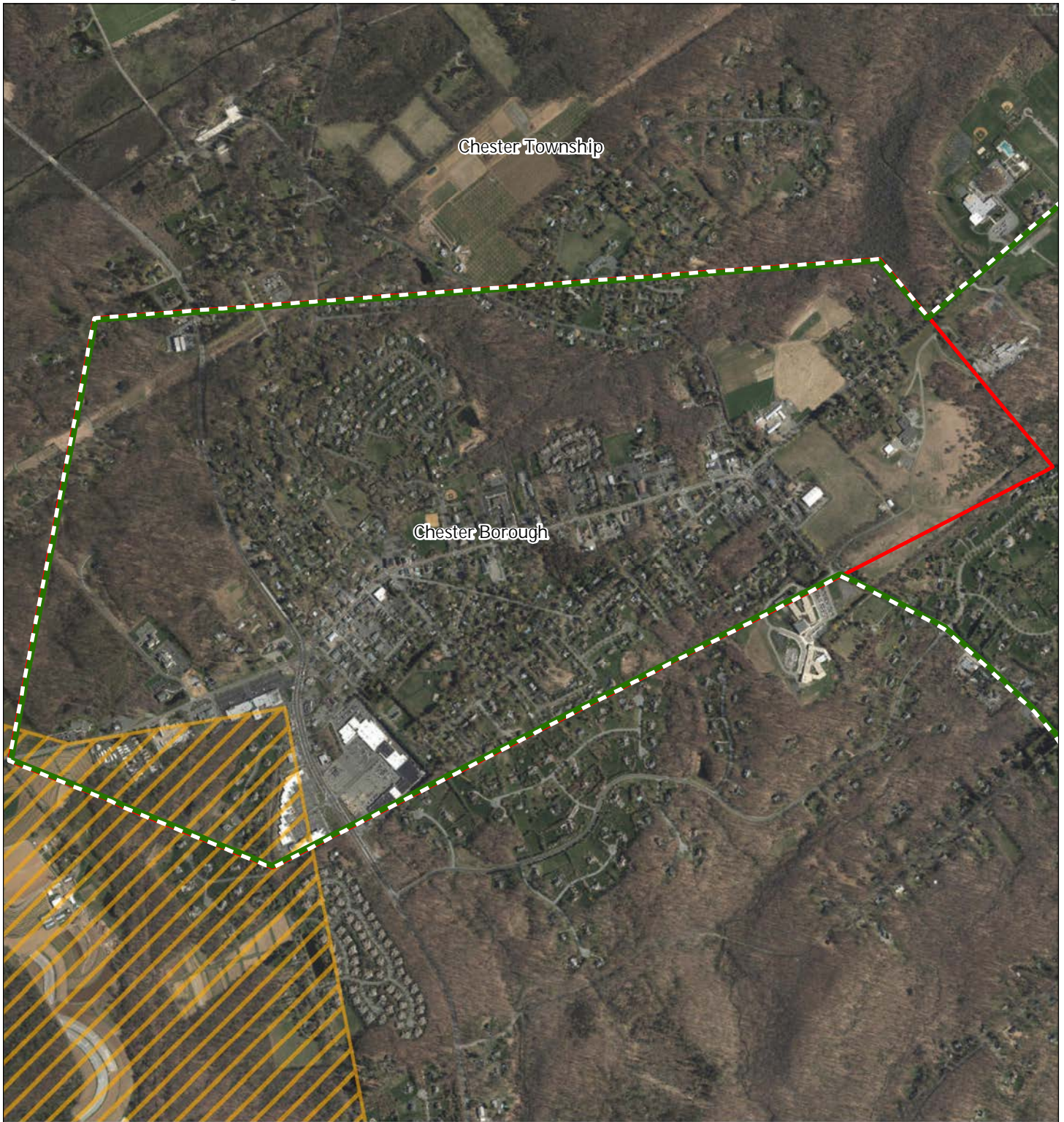
1 inch = 0.261 miles






MAY 2016

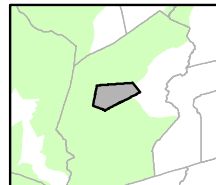
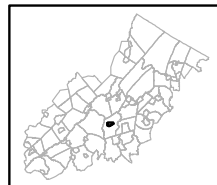


# Exhibit FF: Agricultural Resource Area



-  Agricultural Resource Area
-  Preservation Area
-  Municipal Boundaries

## Chester Borough



1 inch = 0.261 miles





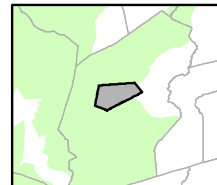
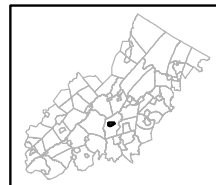
# Exhibit GG: Agricultural Priority Area



## Agricultural Priority Area

-  Moderate
-  High
-  Preservation Area
-  Municipal Boundaries

## Chester Borough



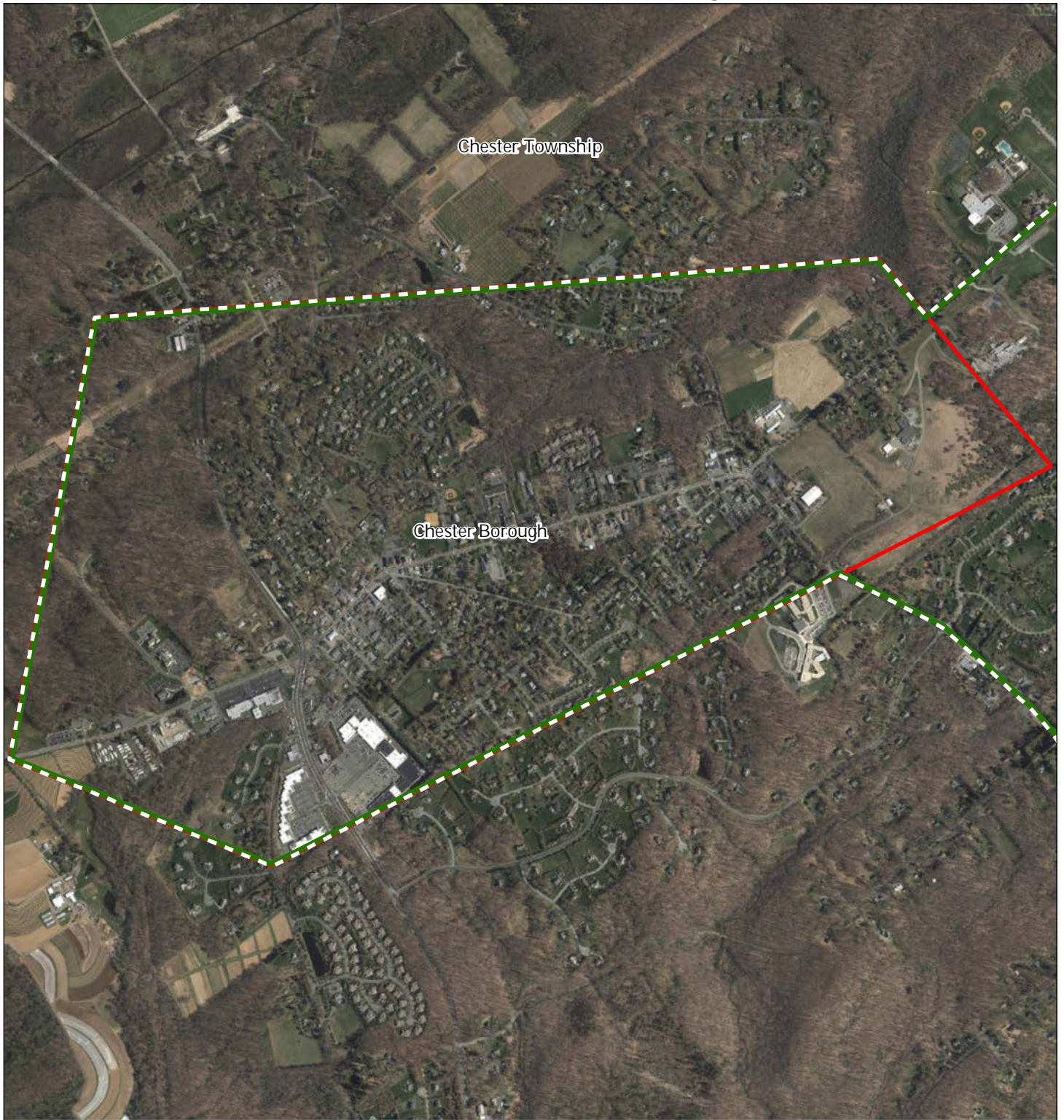
1 inch = 0.261 miles



MAY 2016

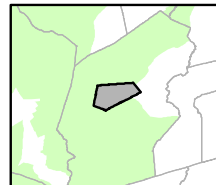
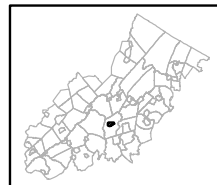


# Exhibit HH: Historic, Cultural, and Archaeological Resources Inventory



-  Preservation Area
-  Municipal Boundaries
-  Archaeological Grids (1 sq mi)
-  NJ Historic Districts
-  Historic Property Points
-  Historic Property Polygons

## Chester Borough



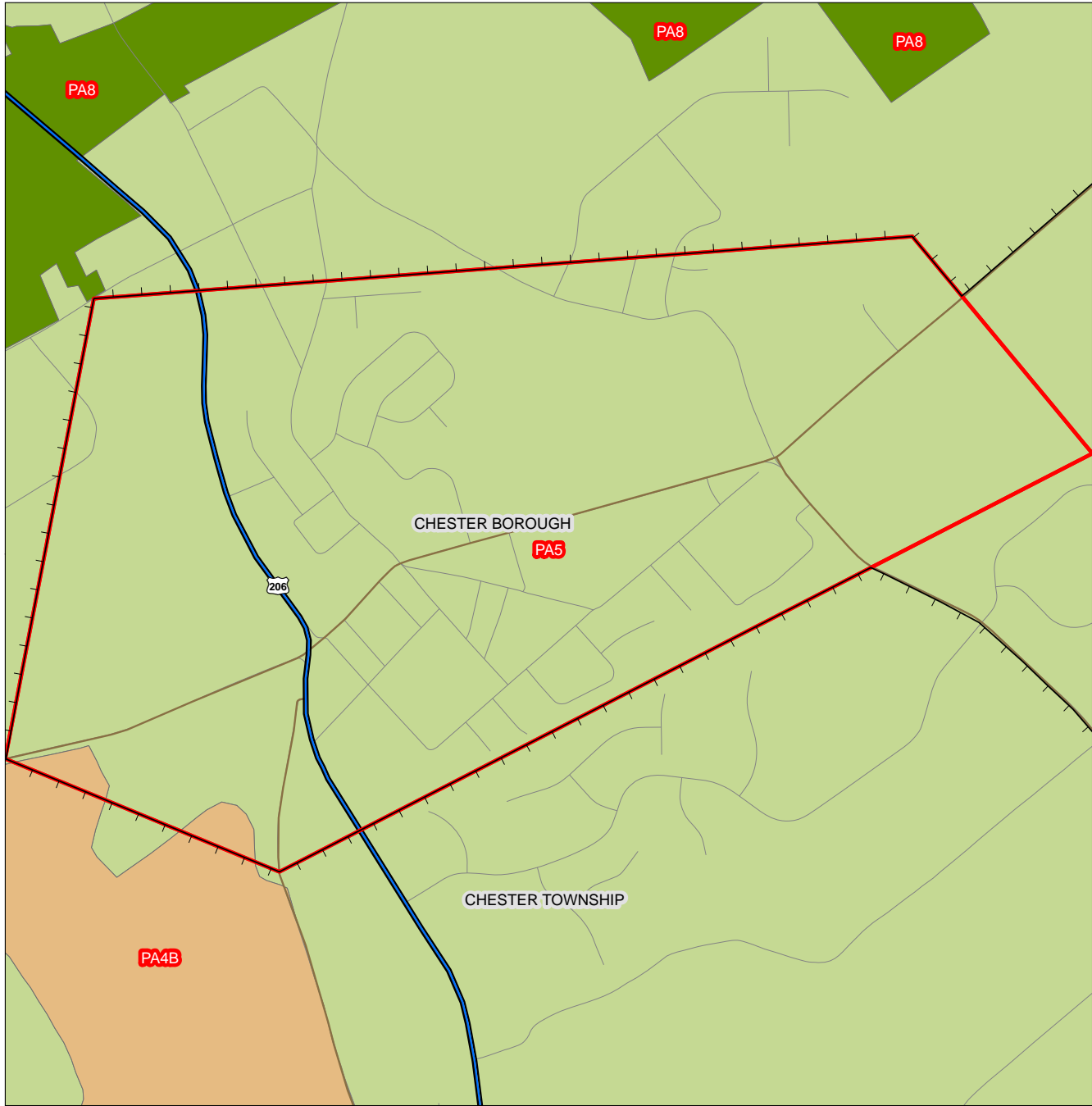
1 inch = 0.261 miles



MAY 2016



# Exhibit JJ: SDRP Planning Areas



**Legend**

- Preservation Area
- Municipal Boundaries
- Interstate Highways
- U.S. Routes
- State Routes
- County Routes
- Designated Centers\*

**State Planning Areas\***

- METROPOLITAN (PA1)
- SUBURBAN (PA2)
- FRINGE (PA3)
- RURAL (PA4)
- RURAL ENVIRONMENTALLY SENSITIVE (PA42)

- ENVIRONMENTALLY SENSITIVE (PA5)
- PARK (PA6)
- FEDERAL PARK (PA7)
- STATE PARK (PA8)
- WATER (PA11)
- MILITARY (PA12)

