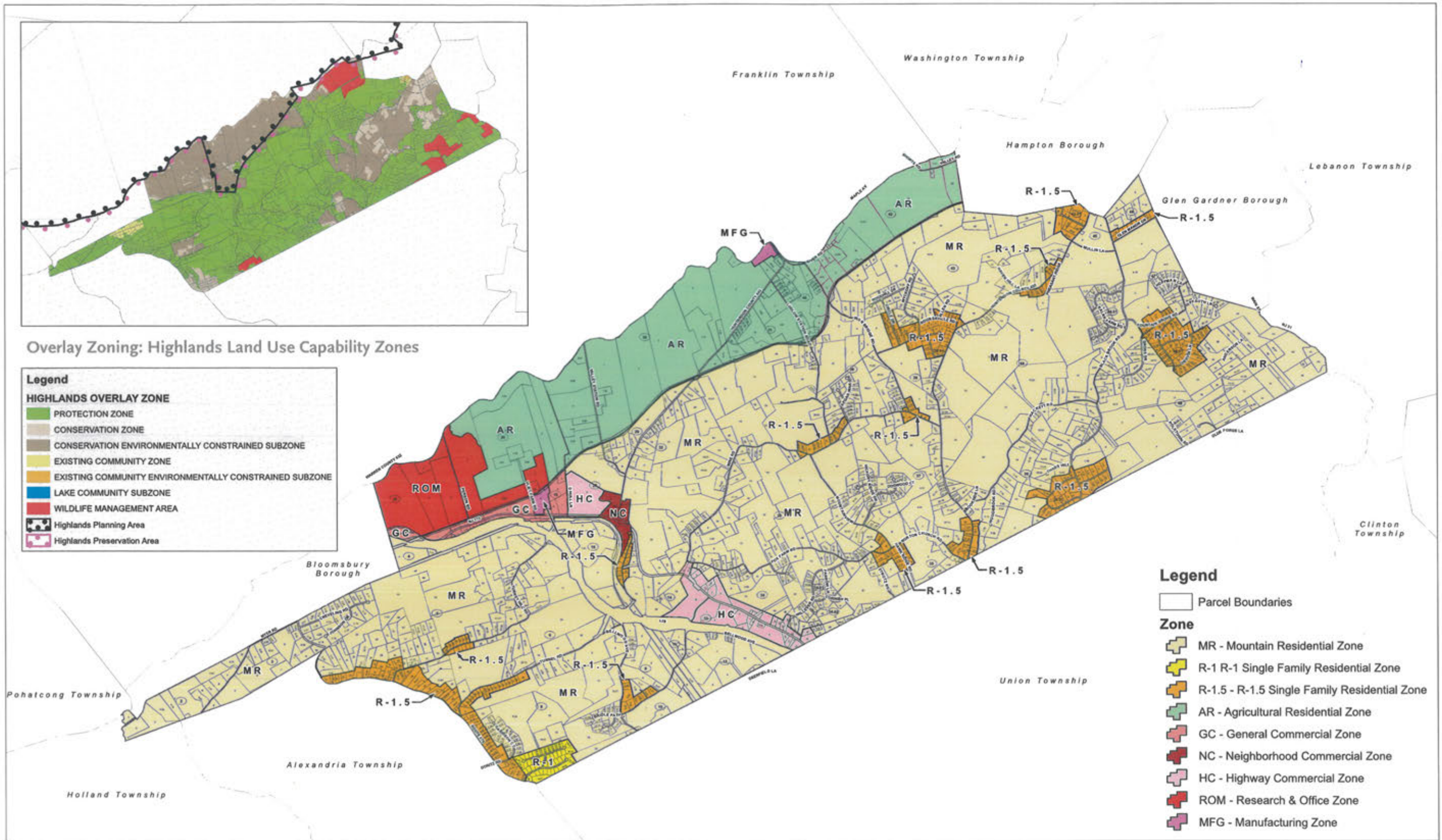
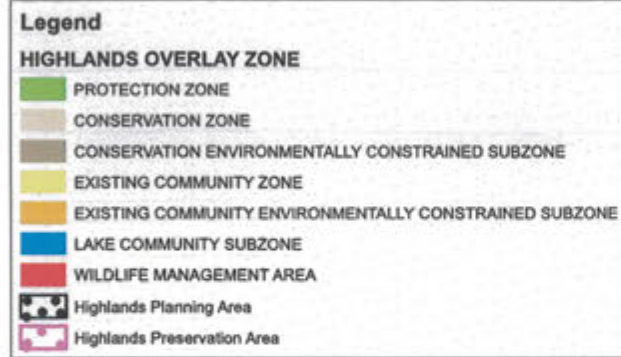




Overlay Zoning: Highlands Land Use Capability Zones



Zoning

Bethlehem Township, Hunterdon County, NJ June 2012
 Corrections provided by NJ Highlands Council per Township request August 2015



-PB-

September 17, 2015

ORDINANCE #255.36.2015

AN ORDINANCE AMENDING SECTION 102-10 OF THE CODE OF THE TOWNSHIP OF BETHLEHEM WITH REGARD TO ZONING MAP

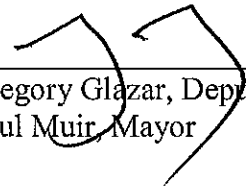
WHEREAS, pursuant to Ordinance #255.36.2014 adopted on December 4, 2014, the Township of Bethlehem amended various sections of its land use ordinances; and

WHEREAS, based on the recommendation of the Township Planning Board, the Township wishes to amend Section 102-10 of the Township Code by referencing and incorporating the attached Zoning Map in Exhibit A, which zoning map reflects the aforementioned amendments to the Township land use ordinances; and

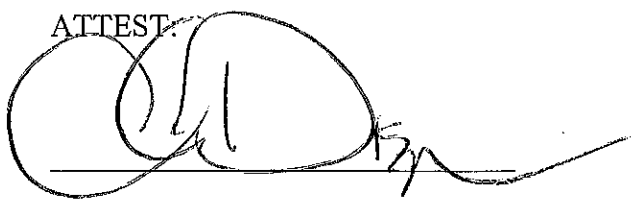
NOW, THEREFORE, BE IT ORDAINED BY THE TOWNSHIP COMMITTEE OF THE TOWNSHIP OF BETHLEHEM IN THE COUNTY OF HUNTERDON, STATE OF NEW JERSEY, that it hereby amends Section 102-10 of the Township Code, with the additions shown in underline and deletions shown in strikeout, as shown in Exhibit A attached hereto and which is on file with the Municipal Clerk's Office; and

BE IT FURTHER ORDAINED that if any section, paragraph, subdivision, clause or provision of this ordinance shall be adjudged invalid, such adjudication shall apply only to the section, paragraph, subdivision, clause or provision so adjudged and the remainder of the Ordinance shall be deemed valid and effective. All Ordinances or parts of ordinances inconsistent with or in conflict with the ordinance are hereby repealed to the extent of such inconsistency.

This Ordinance shall take effect immediately after final adoption by the Township Committee.



Gregory Glazar, Deputy Mayor, on behalf of
Paul Muir, Mayor

ATTEST


Christine Dispenza, Municipal Clerk