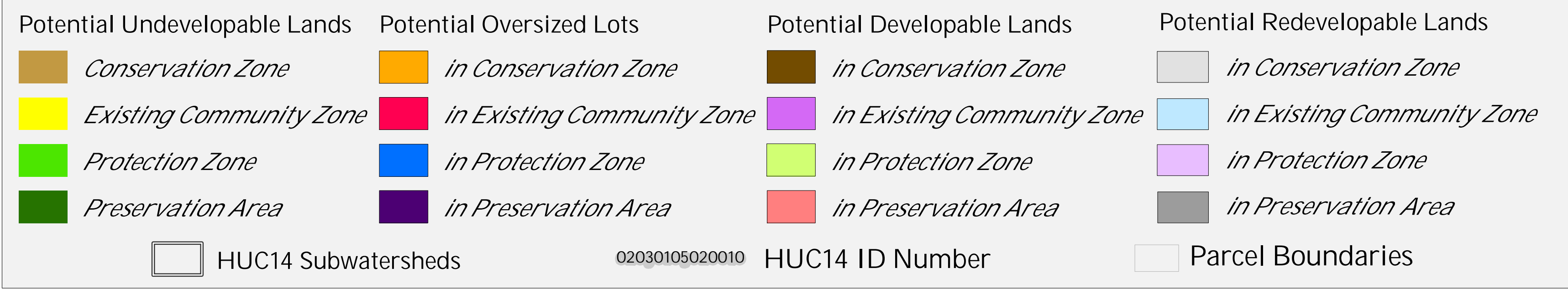


Figure 1: Municipal Build-out Report Septic System Yield by HUC14 and LUCM Zone *
WASHINGTON TOWNSHIP



* Refer to Table 1 for Septic System Yield values, indexed by HUC14 ID

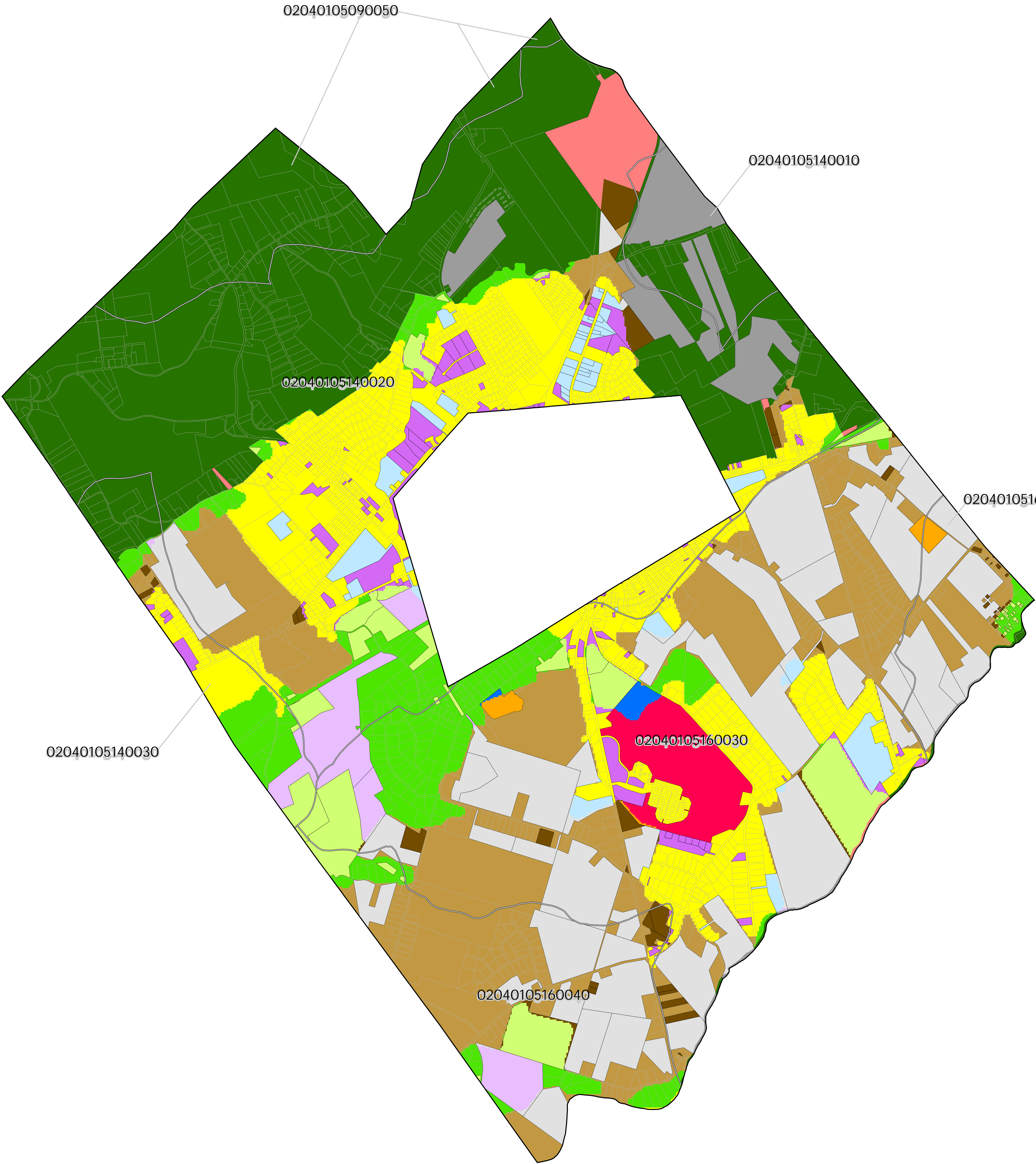


Figure 2: Municipal Build-out Report Environmental Constrained Lands
WASHINGTON TOWNSHIP

Highlands Build-out Environmental Constrained Lands

Constraints:
Highlands Open Water Buffers (300ft)
Flood Prone Areas
Steep Slopes (Moderate and Severe)

Potential Oversized Lots

Potential Developable Lots

Potential Redevelopable Lots

Preservation Area

Parcel Boundaries

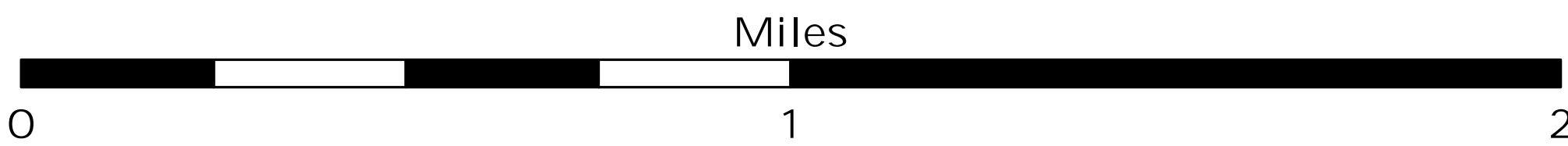
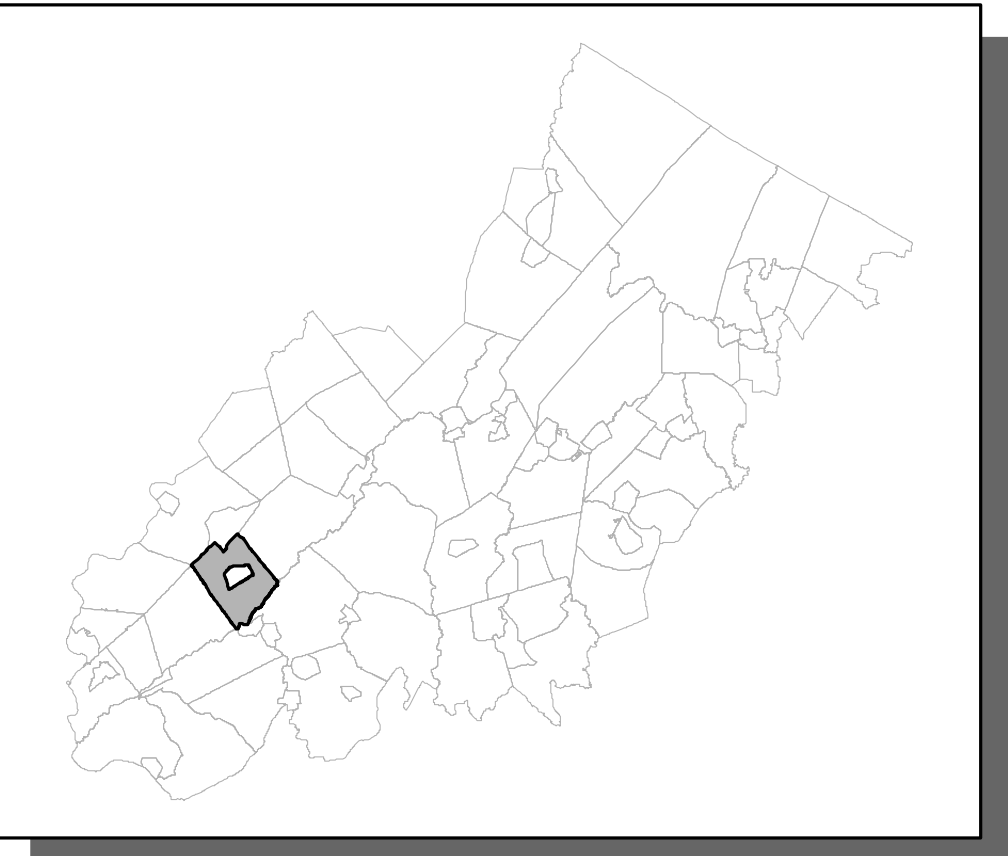


Figure 3: Municipal Build-out Report RMP HDSF Wastewater Utilities
WASHINGTON TOWNSHIP

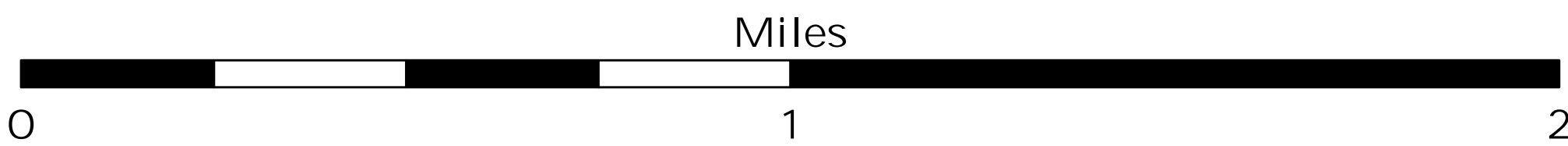
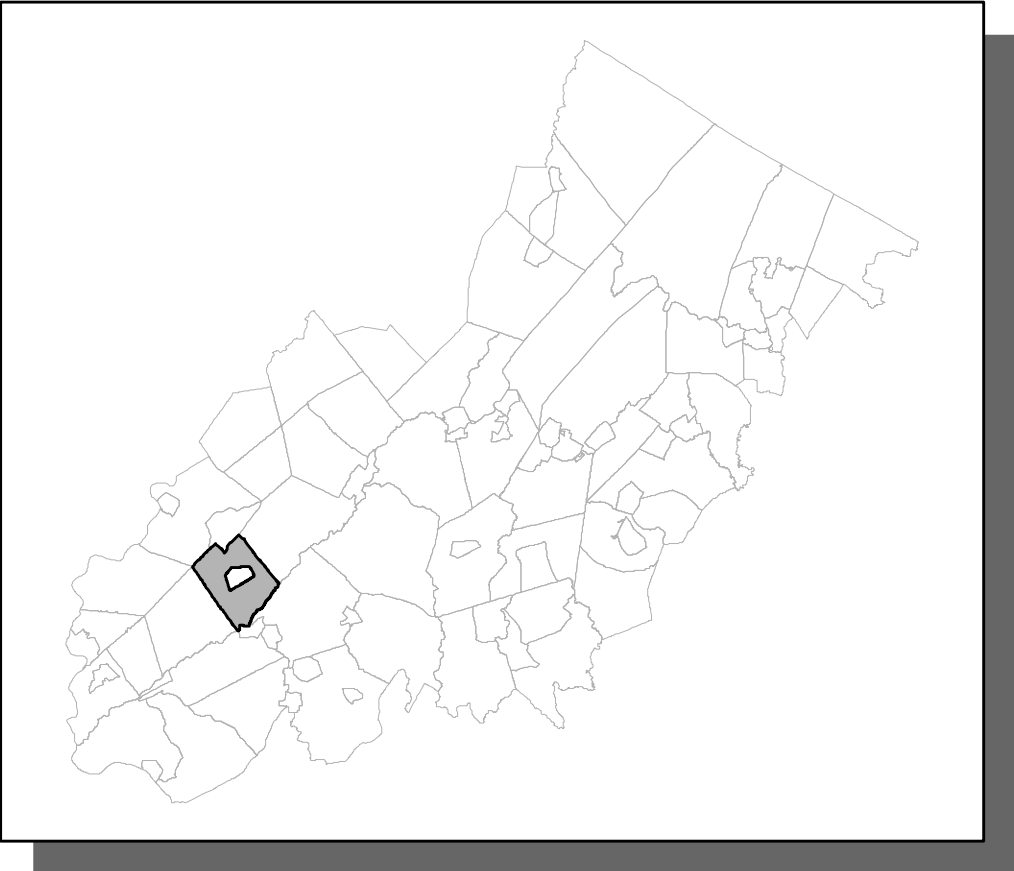
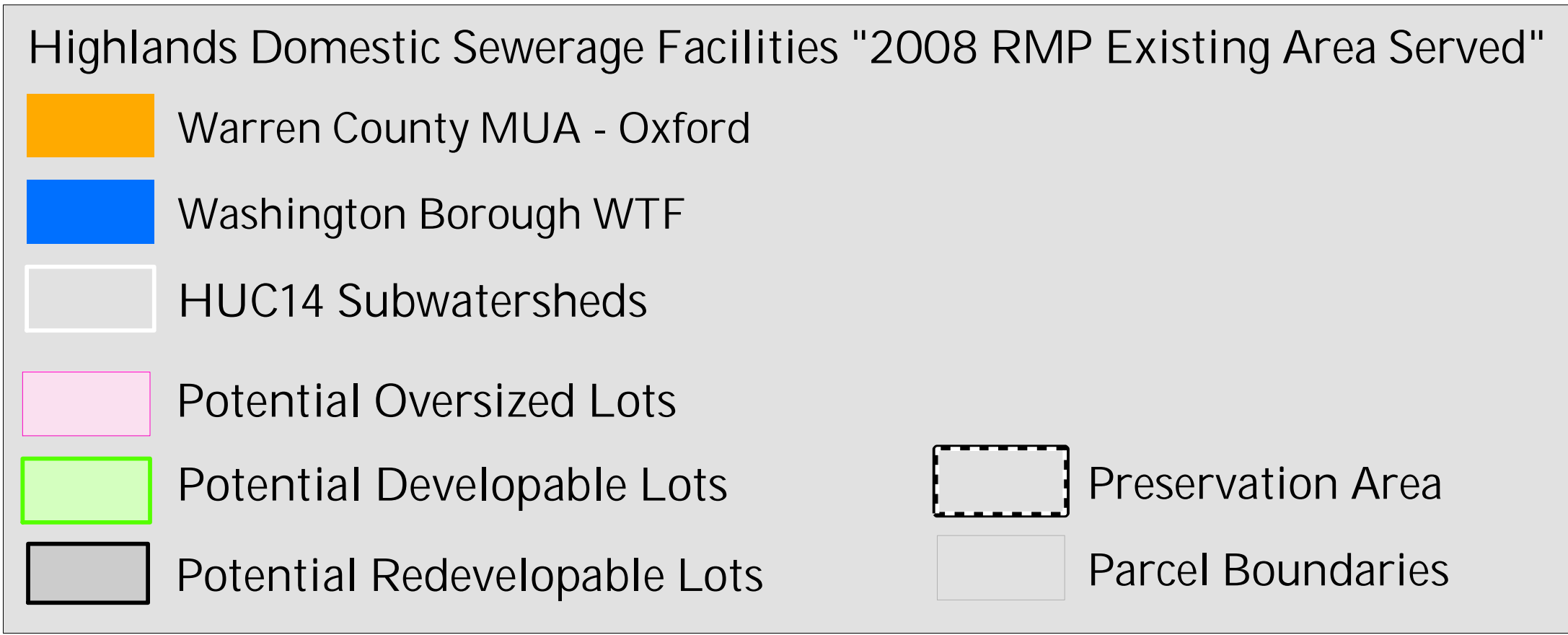


Figure 4: Municipal Build-out Report RMP Public Community Water System Utilities
WASHINGTON TOWNSHIP

Public Community Water Systems "2008 RMP Existing Area Served"

Blue	NJ AMERICAN WATER COMPANY - WASHINGTON SYSTEM
Light Gray	HUC14 Subwatersheds
Pink	Potential Oversized Lots
Light Green	Potential Developable Lots
Dark Gray	Potential Redevelopable Lots
Dashed Line	Preservation Area
Thin Gray Line	Parcel Boundaries

