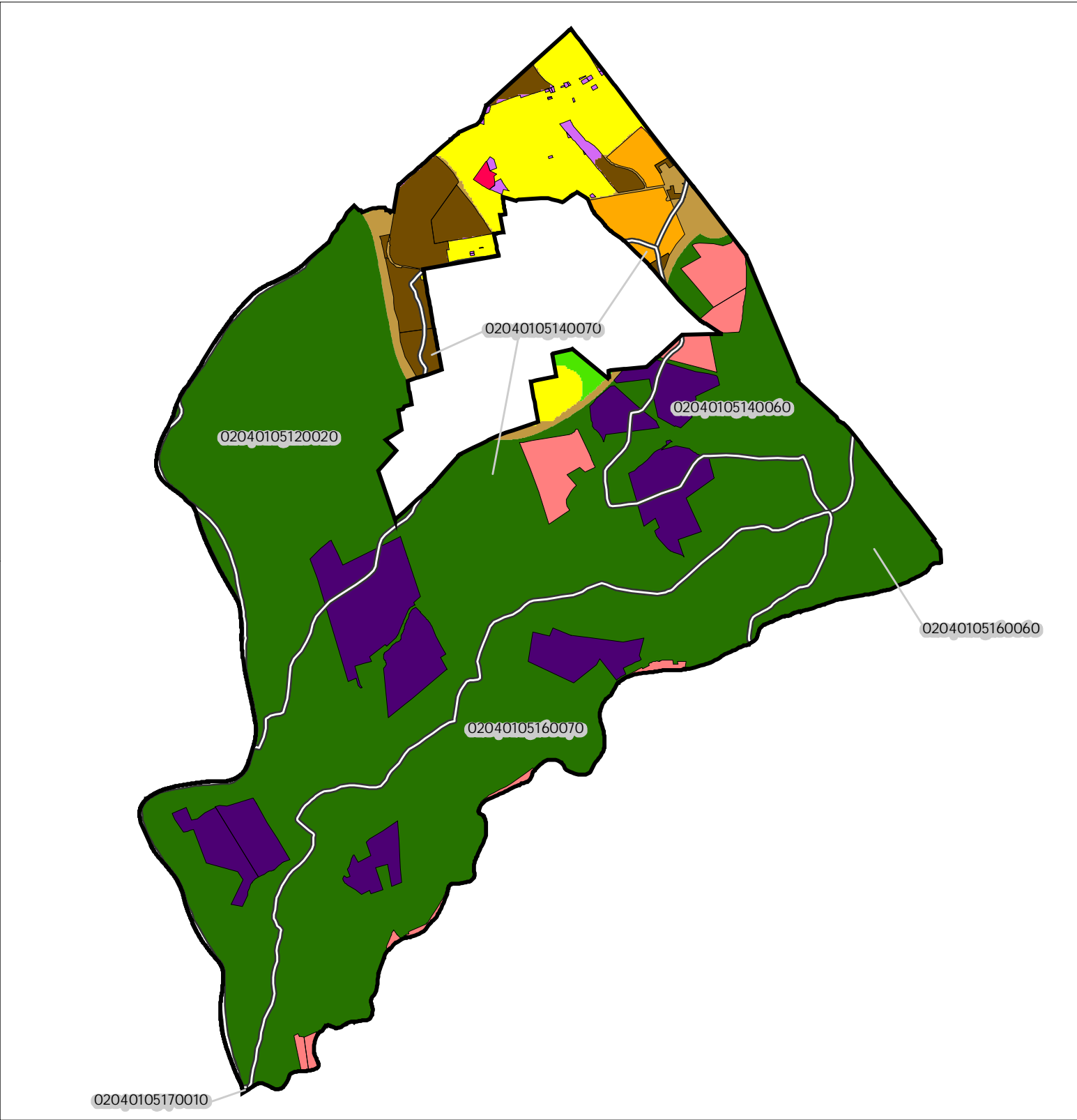


Figure 1: Municipal Build-out Report Septic System Yield by HUC14 and LUCM Zone *

POHATCONG TOWNSHIP



Potential Undevelopable Lands	Potential Oversized Lots	Potential Developable Lands	Potential Redevelopable Lands
Conservation Zone	in Conservation Zone	in Conservation Zone	in Conservation Zone
Existing Community Zone	in Existing Community Zone	in Existing Community Zone	in Existing Community Zone
Protection Zone	in Protection Zone	in Protection Zone	in Protection Zone
Preservation Area	in Preservation Area	in Preservation Area	in Preservation Area

HUC14 Subwatersheds

02040105140070 HUC14 ID Number

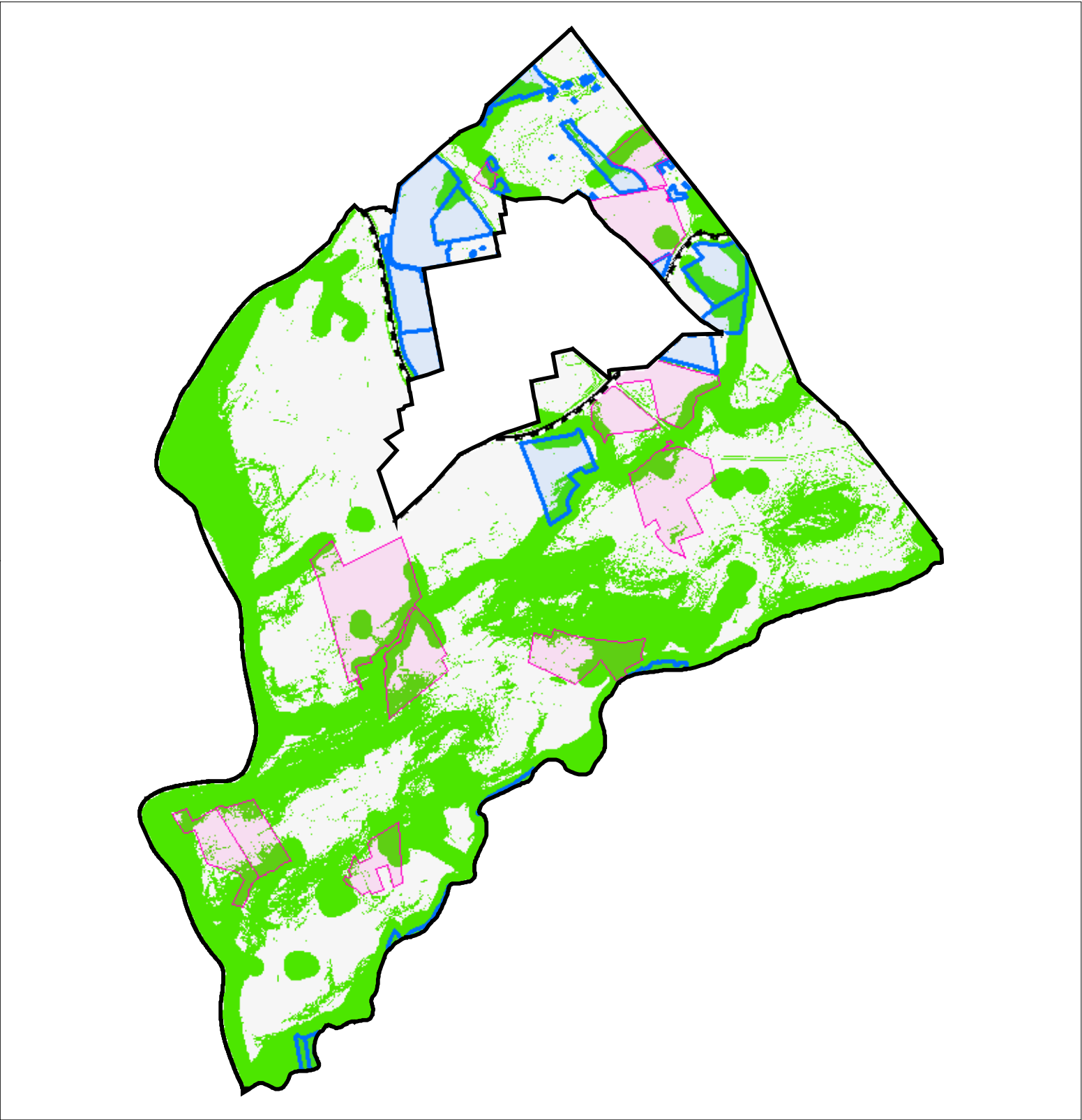
Miles

0 0.5 1

Highlands Council
New Jersey

* Refer to Table 1 for Septic System Yield values, indexed by HUC14 ID

Figure 2: Municipal Build-out Report Environmental Constrained Lands



Highlands Build-Out Environmental Constrained Lands
Constraints:
Highlands Open Water Buffers (300ft)
Flood Prone Areas
Steep Slopes (Moderate and Severe)

Potential Oversized Lots

Potential Developable Lots

Preservation Area

POHATCONG TOWNSHIP

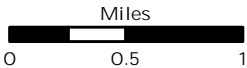
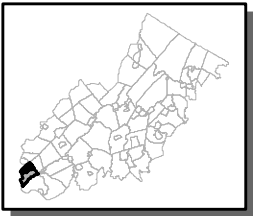
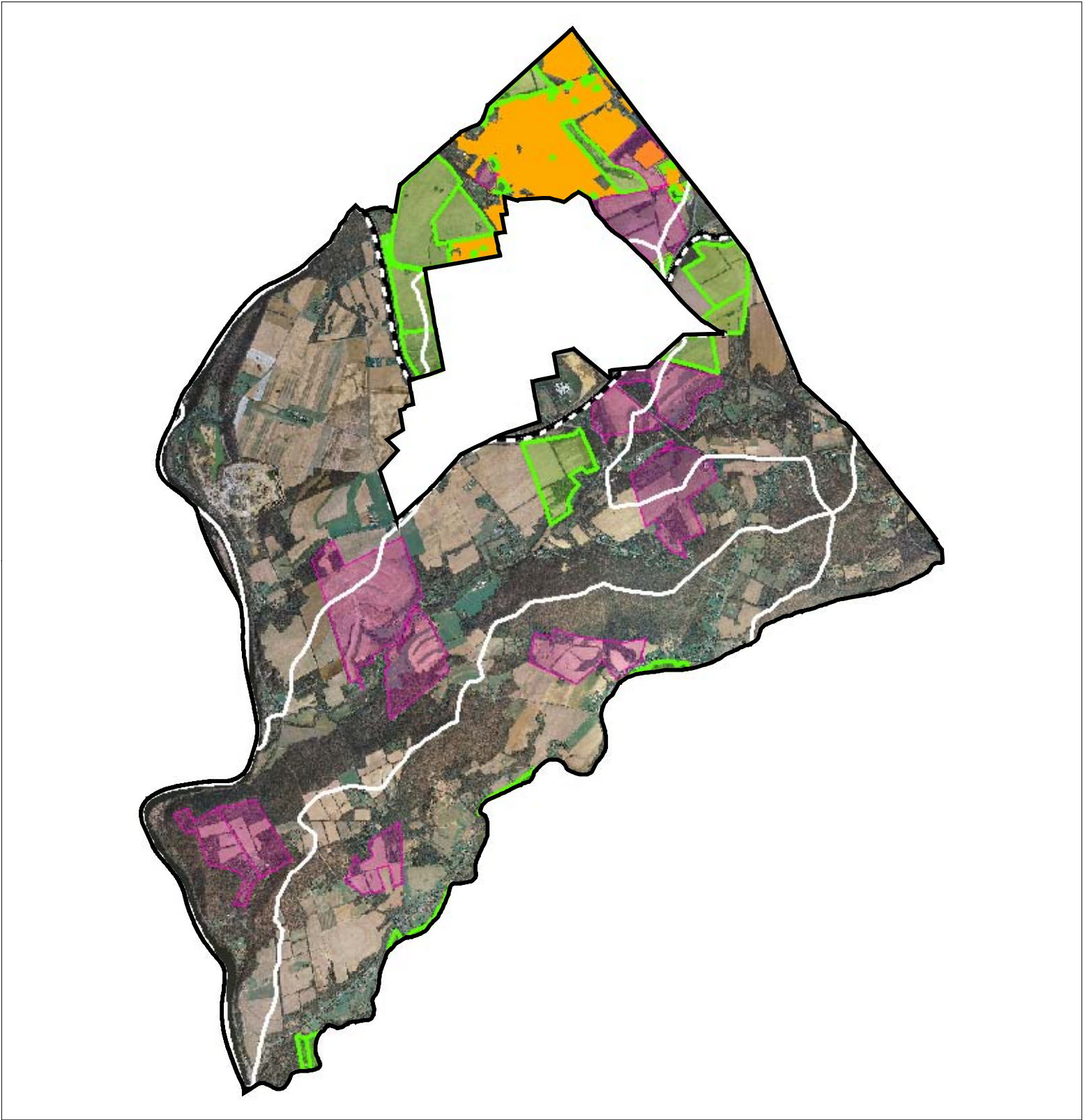


Figure 3: Municipal Build-out Report RMP HDSF Wastewater Utilities



Highlands Domestic Sewerage Facilities "2008 RMP Existing Area Served"

Phillipsburg STP

HUC14 Subwatersheds

Potential Oversized Lots

Potential Developable Lots

Preservation Area

POHATCONG TOWNSHIP

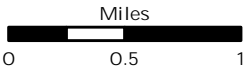
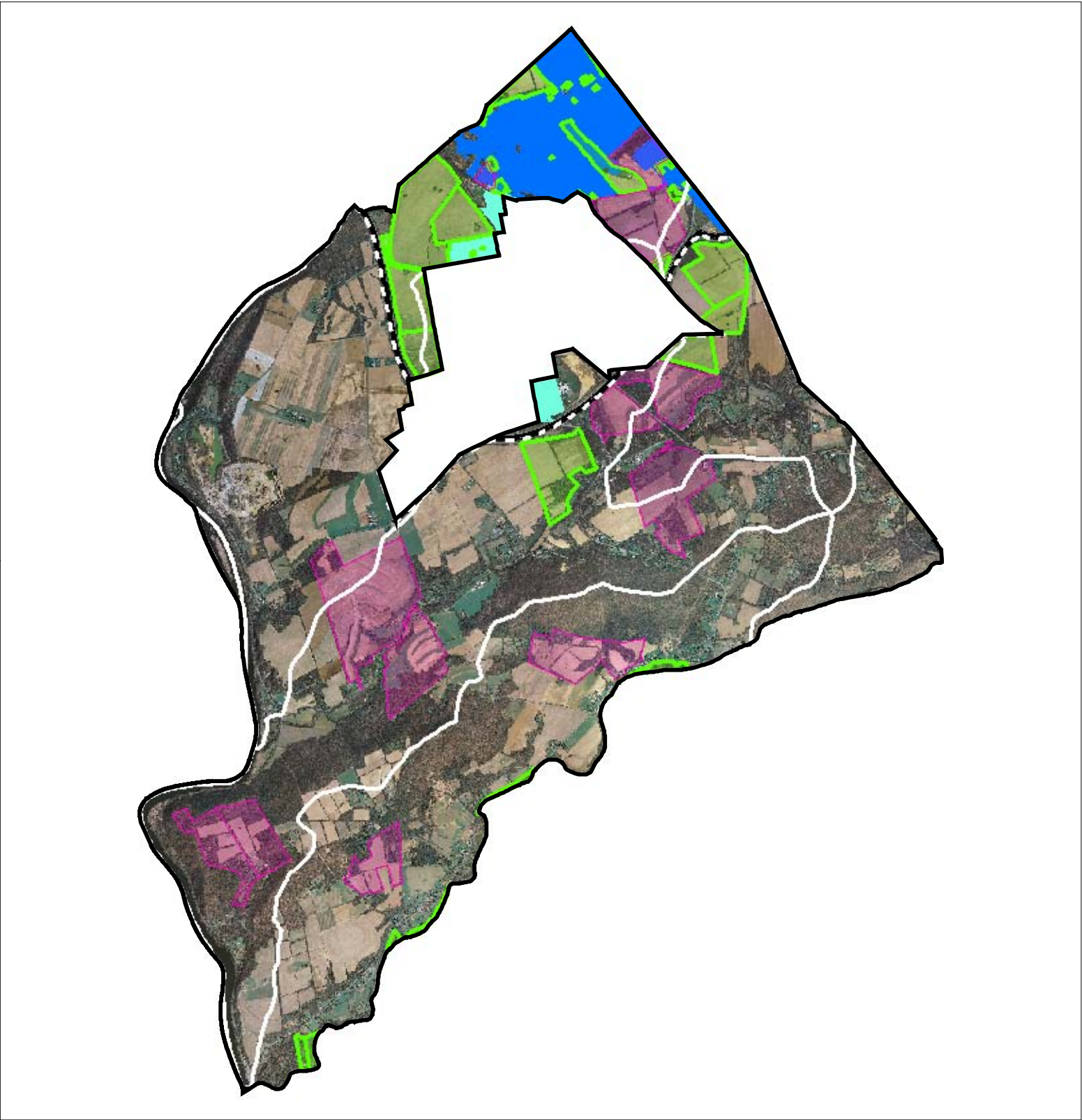


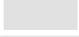

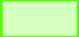



Figure 4: Municipal Build-out Report RMP Public Community Water System Utilities



Public Community Water Systems "2008 RMP Existing Area Served"

	CONSUMERS NJ WATER COMPANY (PHILLIPSBURG)*
	ALPHA MUNICIPAL WATER WORKS
	HUC14 Subwatersheds
	Potential Oversized Lots
	Potential Developable Lots
	Preservation Area

*(AQUA NJ WATER COMPANY- PHILLIPSBURG)

POHATCONG TOWNSHIP

