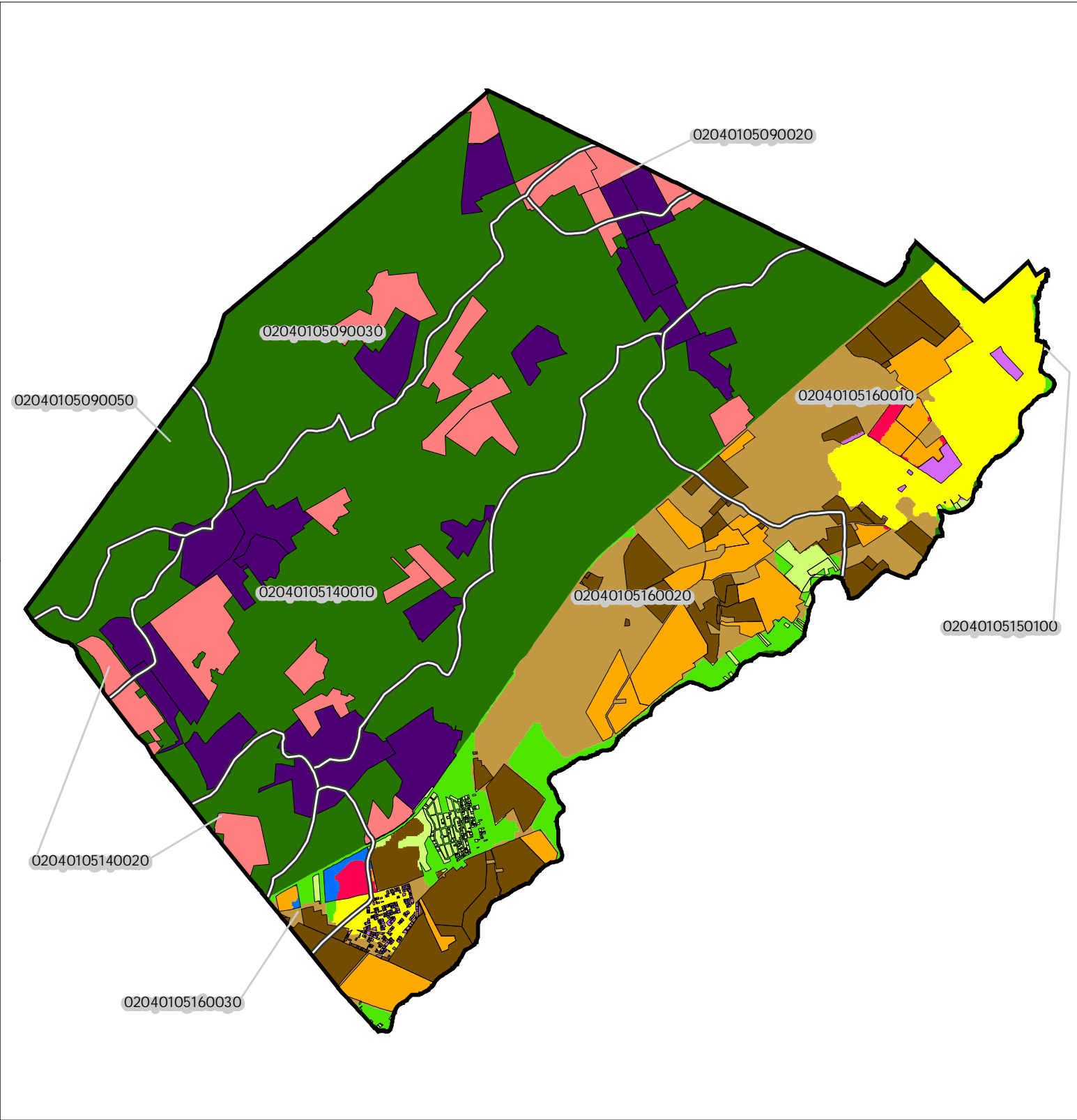


Figure 1: Municipal Build-out Report Septic System Yield by HUC14 and LUCM Zone \*  
MANSFIELD TOWNSHIP



Potential Undevelopable Lands	Potential Oversized Lots	Potential Developable Lands	Potential Redevelopable Lands
Conservation Zone	in Conservation Zone	in Conservation Zone	in Conservation Zone
Existing Community Zone	in Existing Community Zone	in Existing Community Zone	in Existing Community Zone
Protection Zone	in Protection Zone	in Protection Zone	in Protection Zone
Preservation Area	in Preservation Area	in Preservation Area	in Preservation Area

HUC14 Subwatersheds
 HUC14 ID Number

Miles  
0 1 2

\* Refer to Table 1 for Septic System Yield values, indexed by HUC14 ID

Figure 2: Municipal Build-out Report Environmental Constrained Lands

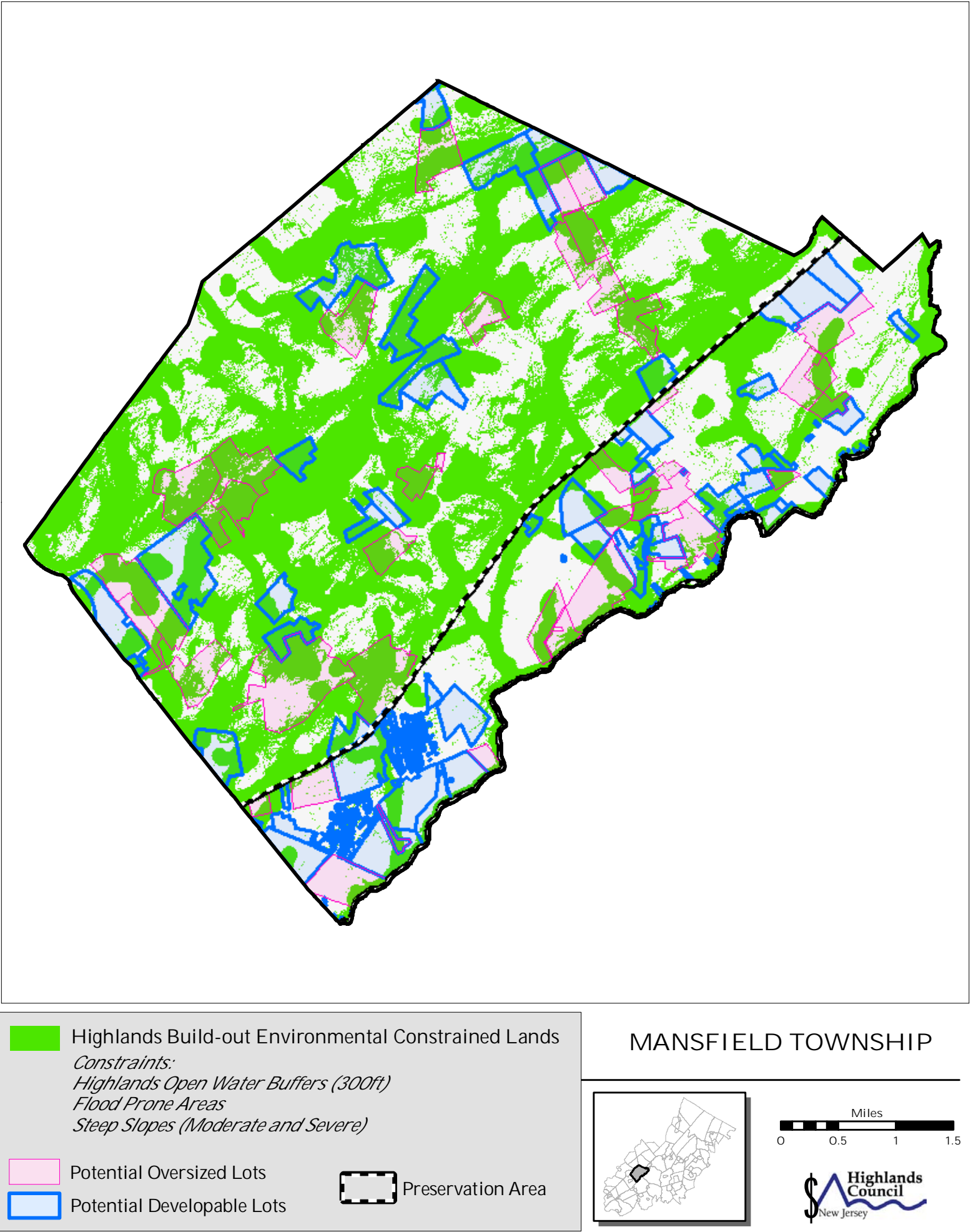
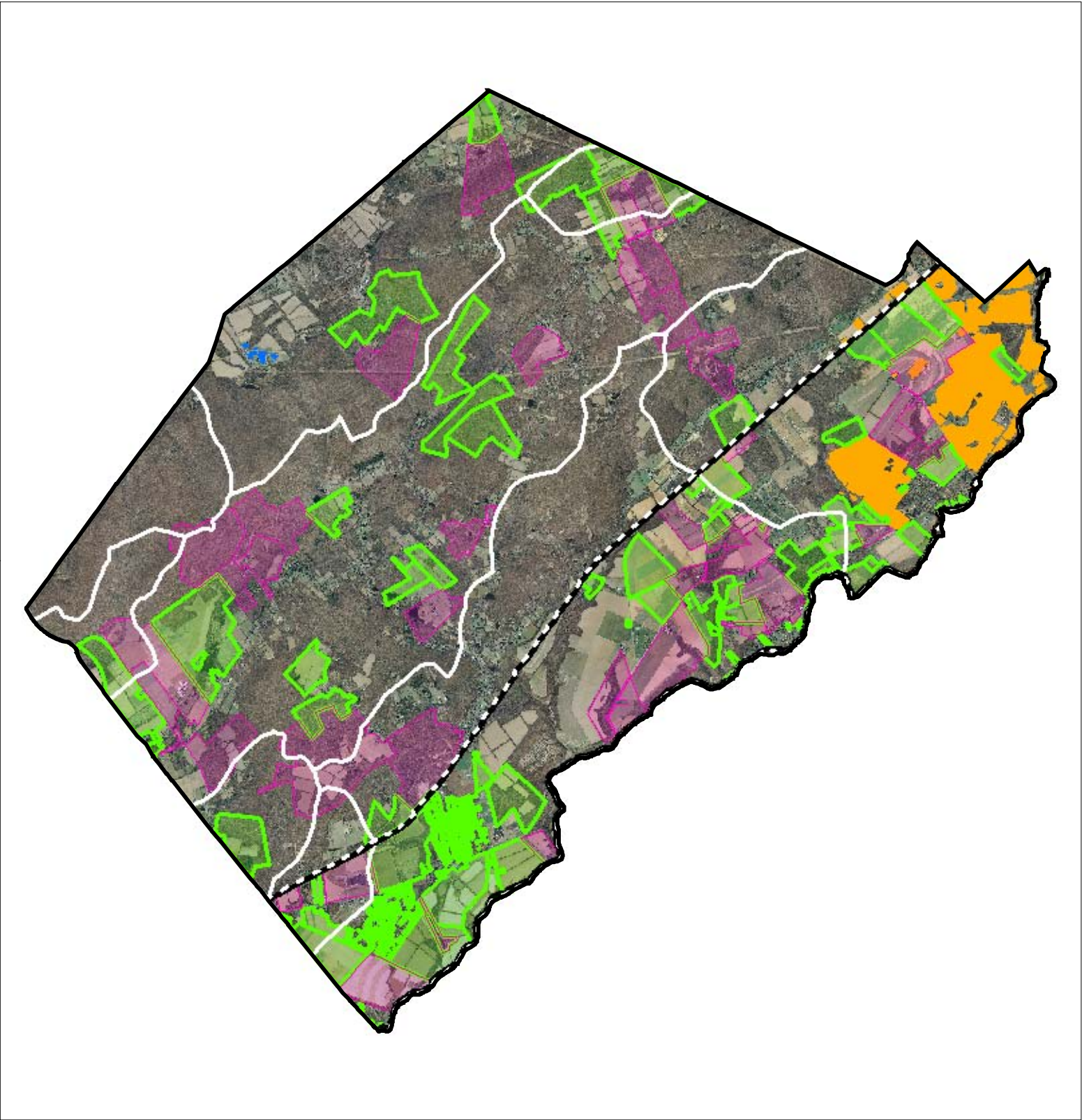




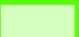



Figure 3: Municipal Build-out Report RMP HDSF Wastewater Utilities



Highlands Domestic Sewerage Facilities "2008 RMP Existing Area Served"

-  *Hackettstown WPCF*
-  *Warren County MUA - Oxford*
-  HUC14 Subwatersheds
-  Potential Oversized Lots
-  Potential Developable Lots

 Preservation Area

MANSFIELD TOWNSHIP

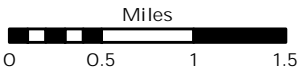
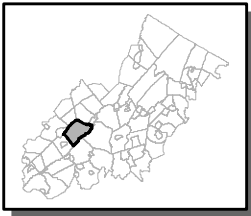
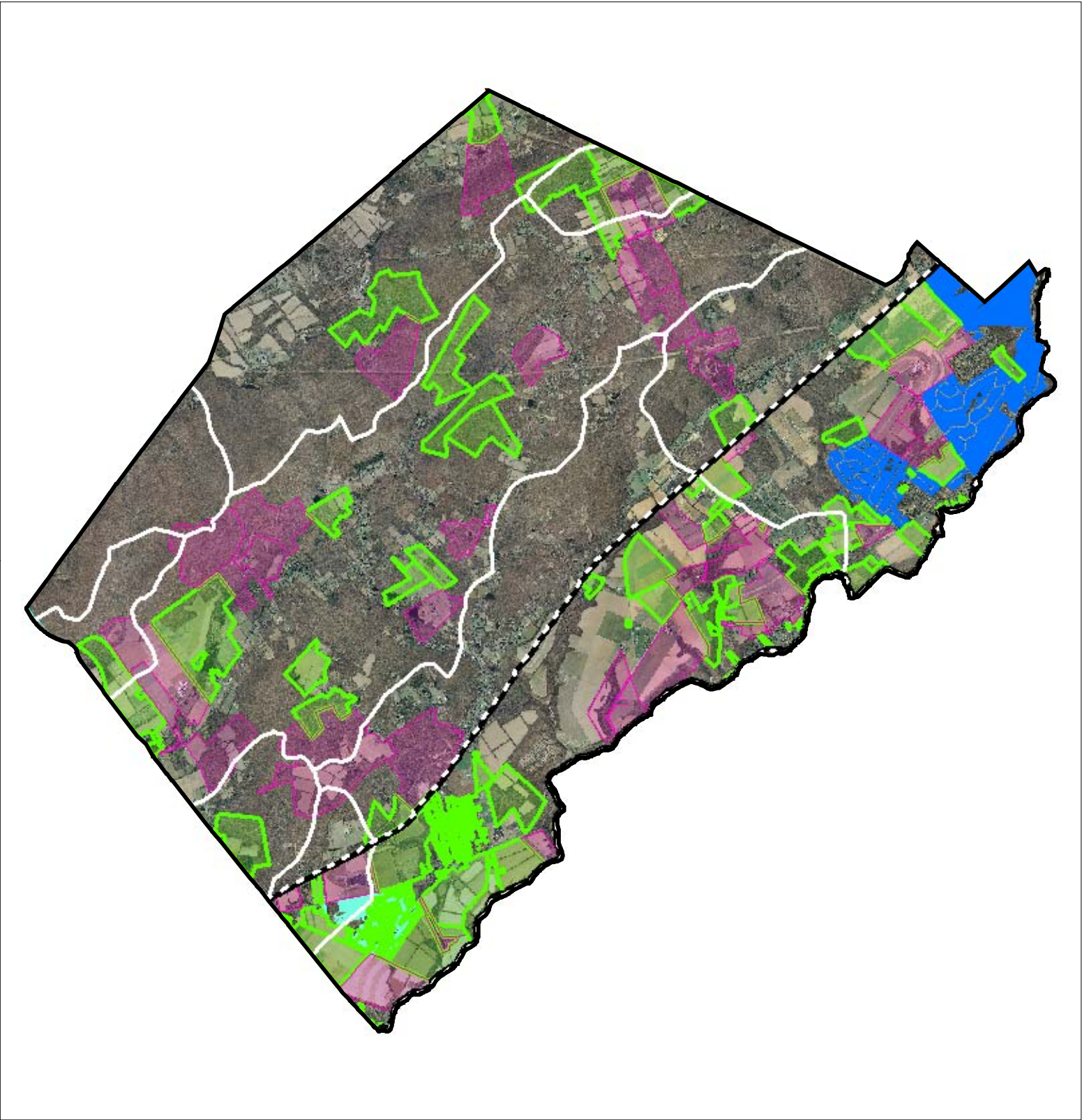







Figure 4: Municipal Build-out Report RMP Public Community Water System Utilities




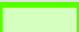
Public Community Water Systems "2008 RMP Existing Area Served"


 *HACKETTSTOWN MUA (WITH DIAMOND HILL)*

 *NJ AMERICAN WATER COMPANY - Mansfield Water System*

 HUC14 Subwatersheds

 Potential Oversized Lots

 Potential Developable Lots

 Preservation Area

MANSFIELD TOWNSHIP

