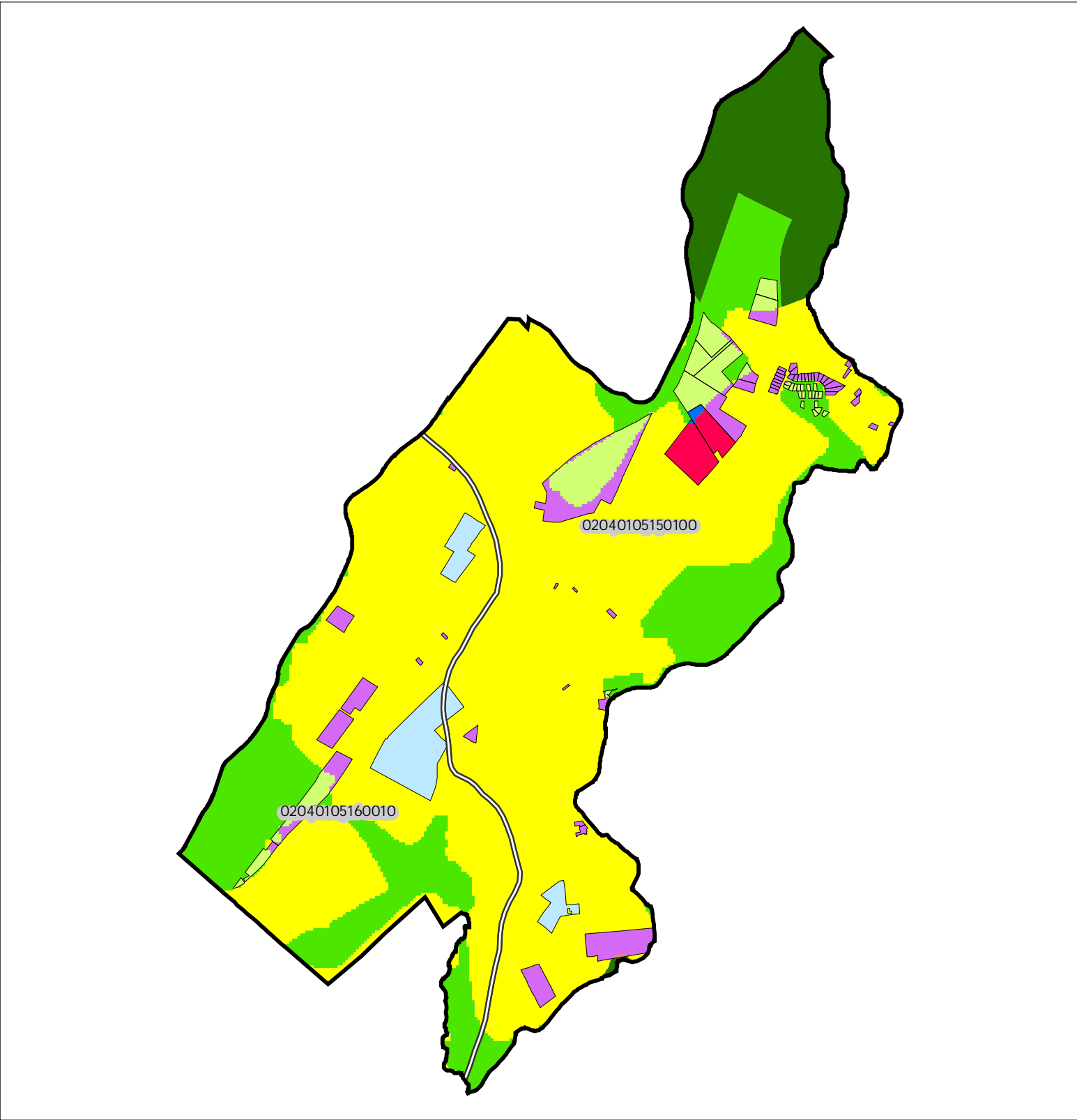


Figure 1: Municipal Build-out Report Septic System Yield by HUC14 and LUCM Zone *
HACKETTSTOWN TOWN



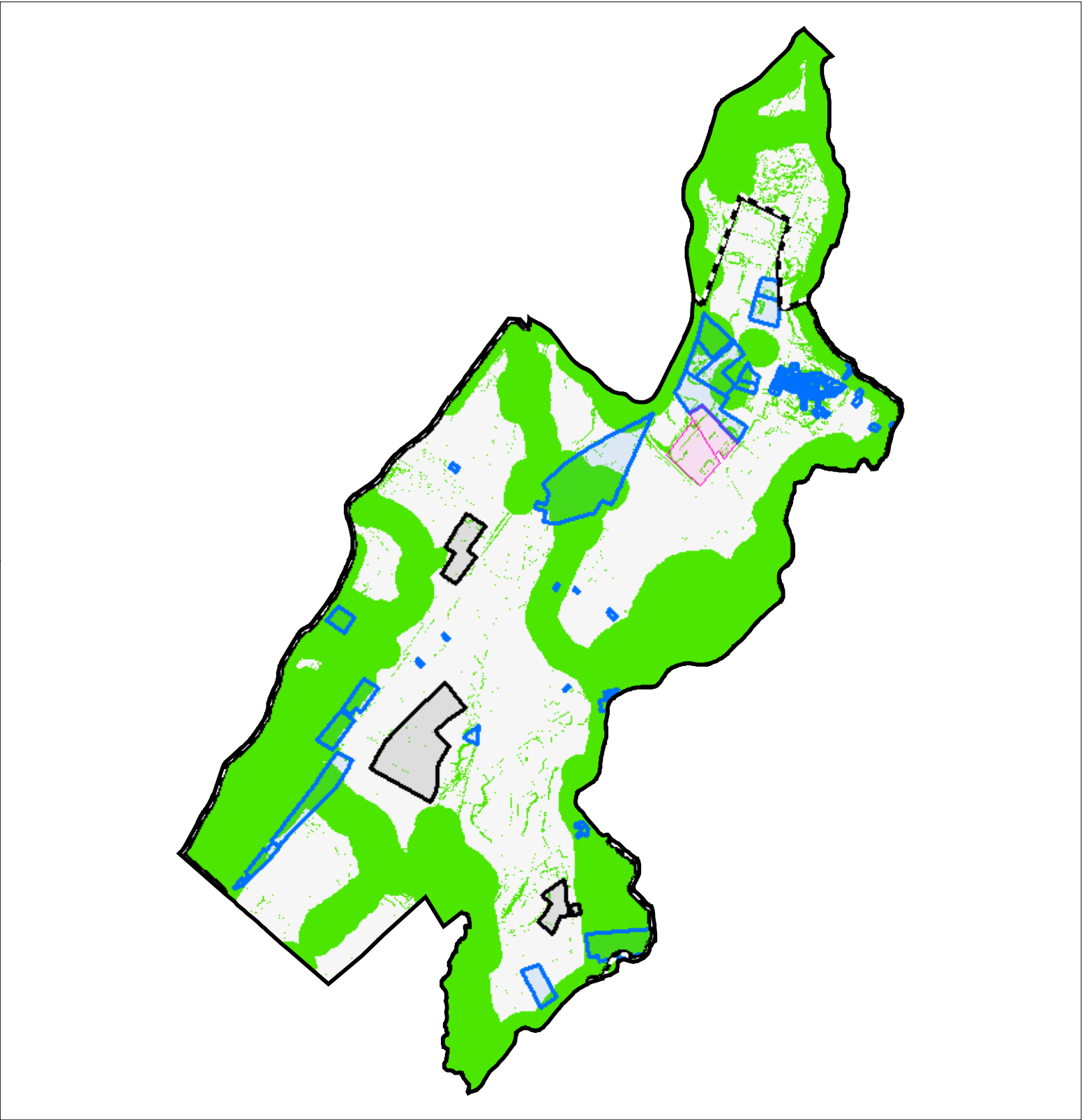
Potential Undevelopable Lands	Potential Oversized Lots	Potential Developable Lands	Potential Redevelopable Lands
Conservation Zone	in Conservation Zone	in Conservation Zone	in Conservation Zone
Existing Community Zone	in Existing Community Zone	in Existing Community Zone	in Existing Community Zone
Protection Zone	in Protection Zone	in Protection Zone	in Protection Zone
Preservation Area	in Preservation Area	in Preservation Area	in Preservation Area

HUC14 Subwatersheds HUC14 ID Number

Miles
0 0.5 1

* Refer to Table 1 for Septic System Yield values, indexed by HUC14 ID

Figure 2: Municipal Build-out Report Environmental Constrained Lands



Highlands Build-out Environmental Constrained Lands
Constraints:
Highlands Open Water Buffers (300ft)
Flood Prone Areas
Steep Slopes (Moderate and Severe)

Potential Oversized Lots

Potential Developable Lots

Potential Redevelopable Lots

Preservation Area

HACKETTSTOWN TOWN


Miles

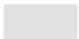
00.30.6


Figure 3: Municipal Build-out Report RMP HDSF Wastewater Utilities

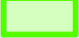



Highlands Domestic Sewerage Facilities "2008 RMP Existing Area Served"


 *Hackettstown WPCF*

 HUC14 Subwatersheds

 Potential Oversized Lots

 Potential Developable Lots

 Potential Redevelopable Lots

 Preservation Area

HACKETTSTOWN TOWN

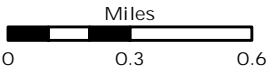
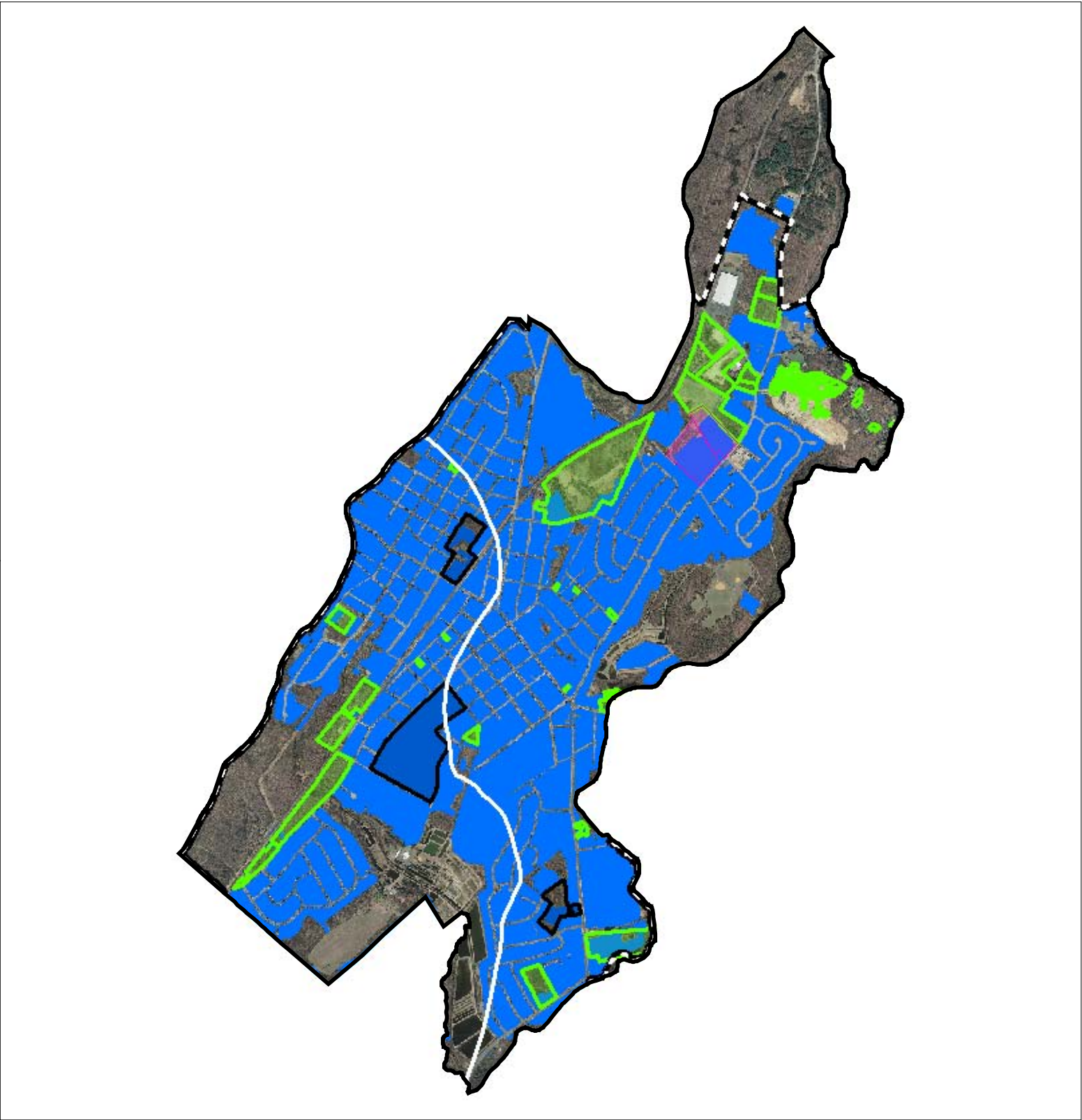

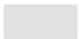



Figure 4: Municipal Build-out Report RMP Public Community Water System Utilities

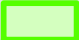



Public Community Water Systems "2008 RMP Existing Area Served"


 *HACKETTSTOWN MUA (WITH DIAMOND HILL)*

 HUC14 Subwatersheds

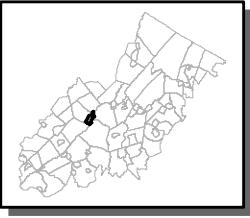
 Potential Oversized Lots

 Potential Developable Lots

 Potential Redevelopable Lots

 Preservation Area

HACKETTSTOWN TOWN



Miles
0 0.3 0.6

