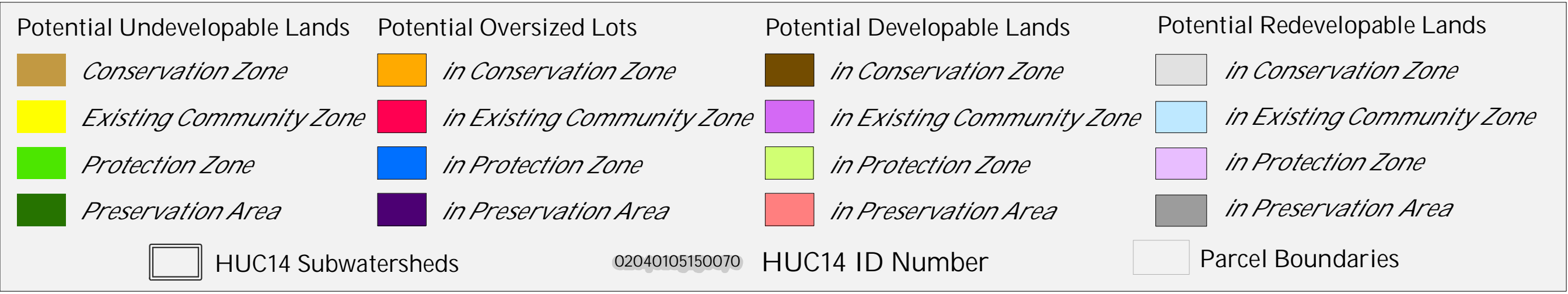


Figure 1: Municipal Build-out Report Septic System Yield by HUC14 and LUCM Zone *
STANHOPE BOROUGH



* Refer to Table 1 for Septic System Yield values, indexed by HUC14 ID

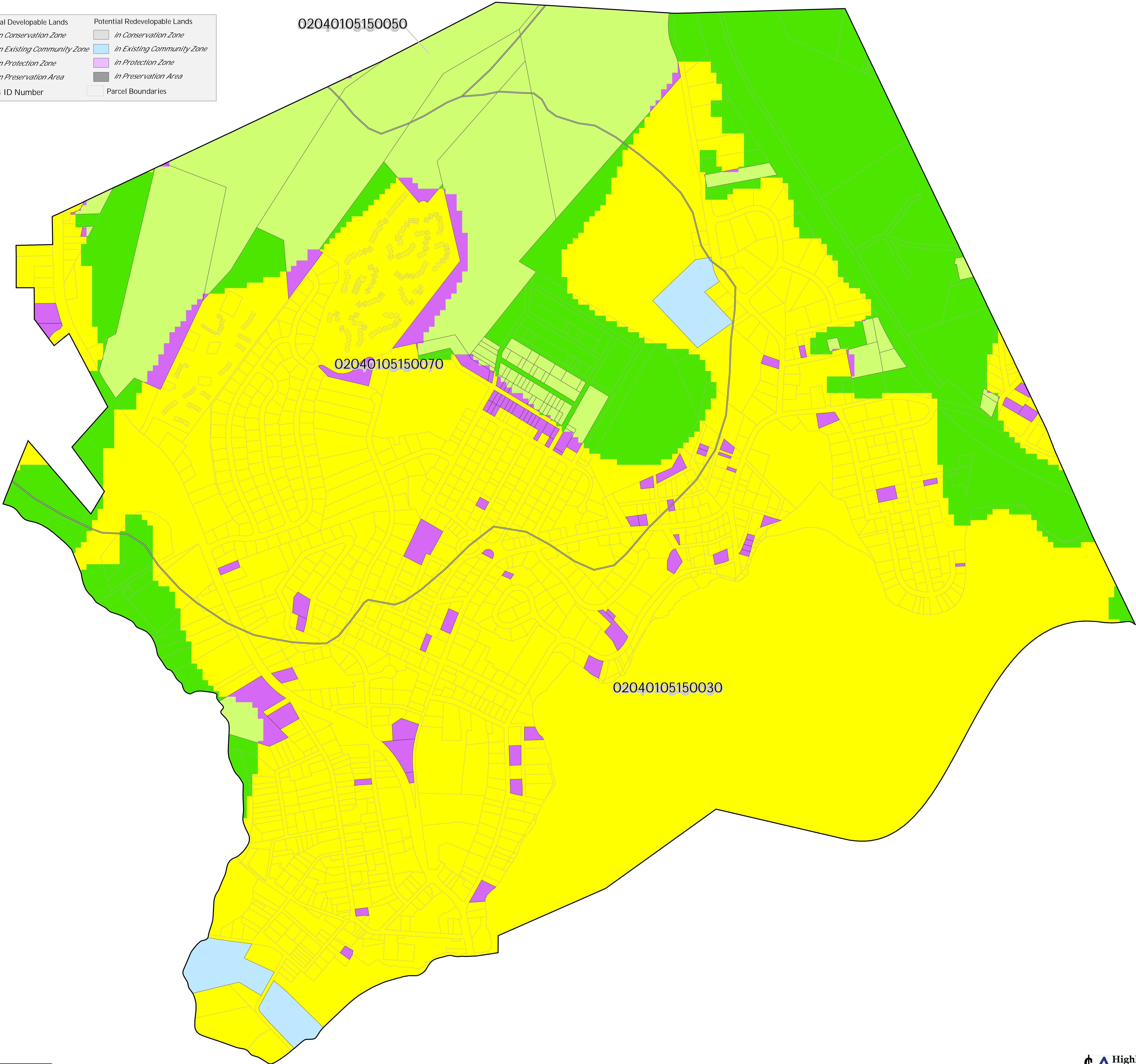


Figure 2: Municipal Build-out Report Environmental Constrained Lands
STANHOPE BOROUGH

Highlands Build-Out Environmental Constrained Lands

Constraints:

Highlands Open Water Buffers (300ft)

Flood Prone Areas

Steep Slopes (Moderate and Severe)

Potential Oversized Lots

Potential Developable Lots

Potential Redevelopable Lots

Preservation Area

Parcel Boundaries

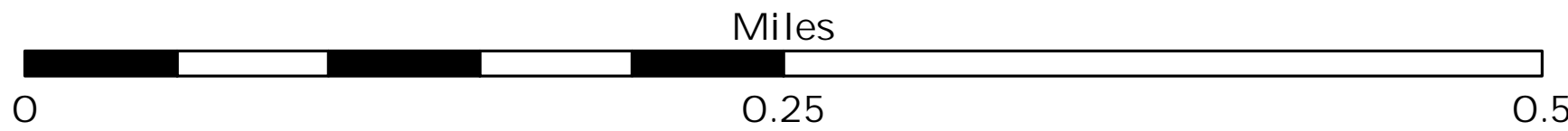
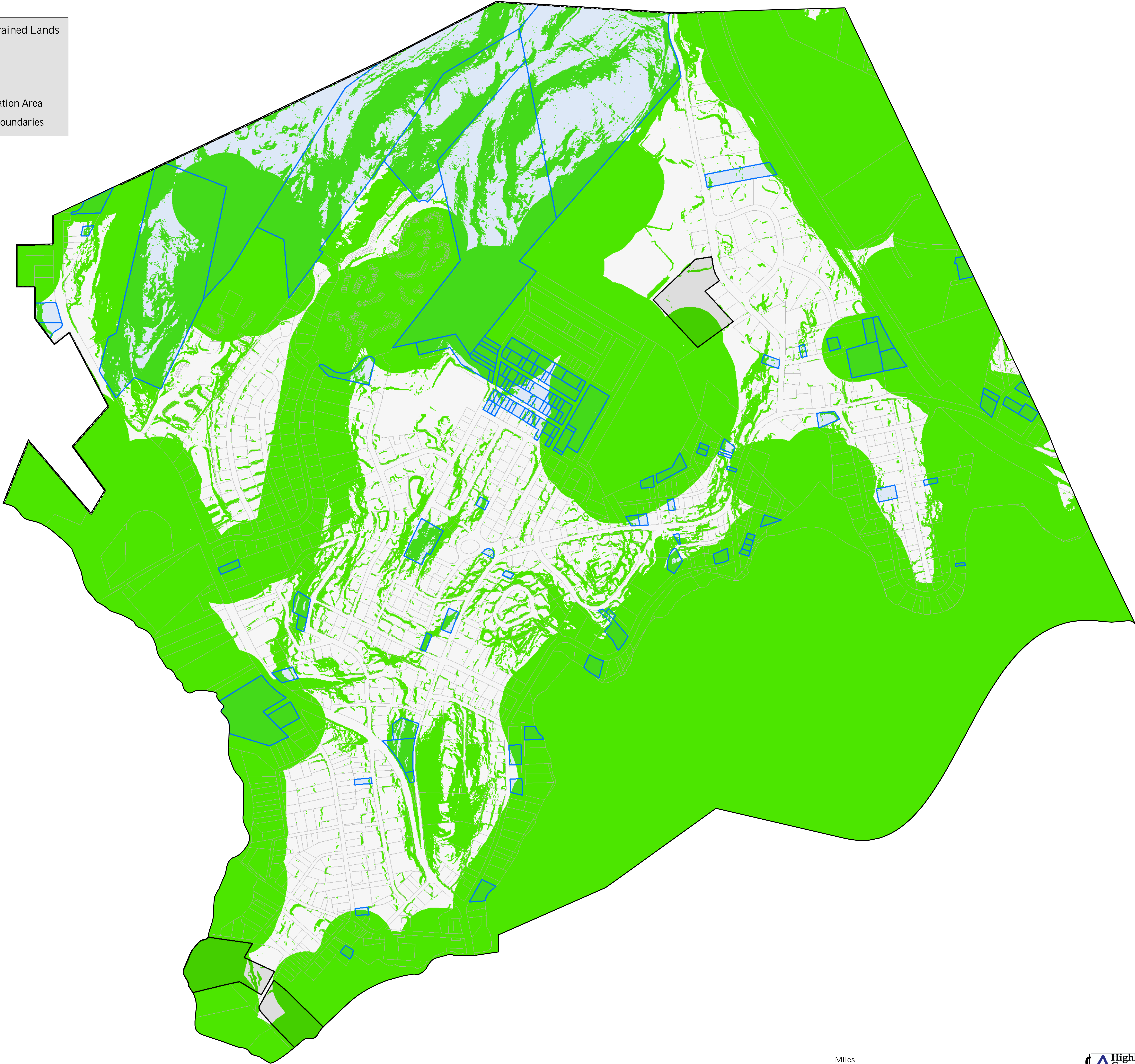


Figure 3: Municipal Build-out Report RMP HDSF Wastewater Utilities
STANHOPE BOROUGH

Highlands Domestic Sewerage Facilities "2008 RMP Existing Area Served"

Musconetcong SA

HUC14 Subwatersheds

Potential Oversized Lots

Potential Developable Lots

Potential Redevelopable Lots

Preservation Area

Parcel Boundaries

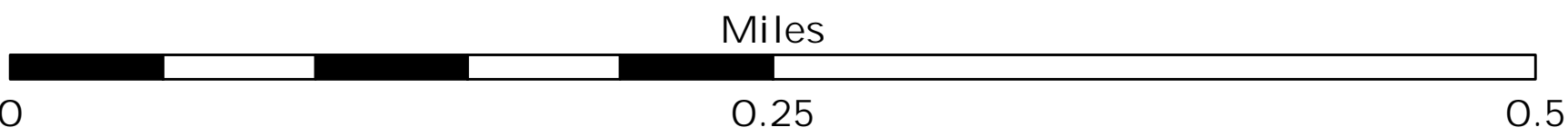
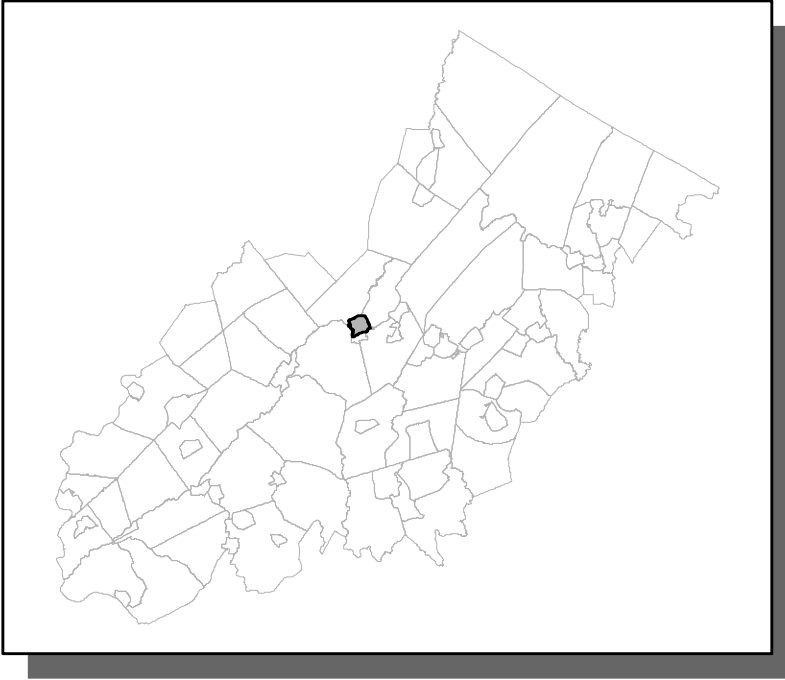


Figure 4: Municipal Build-out Report RMP Public Community Water System Utilities
STANHOPE BOROUGH

