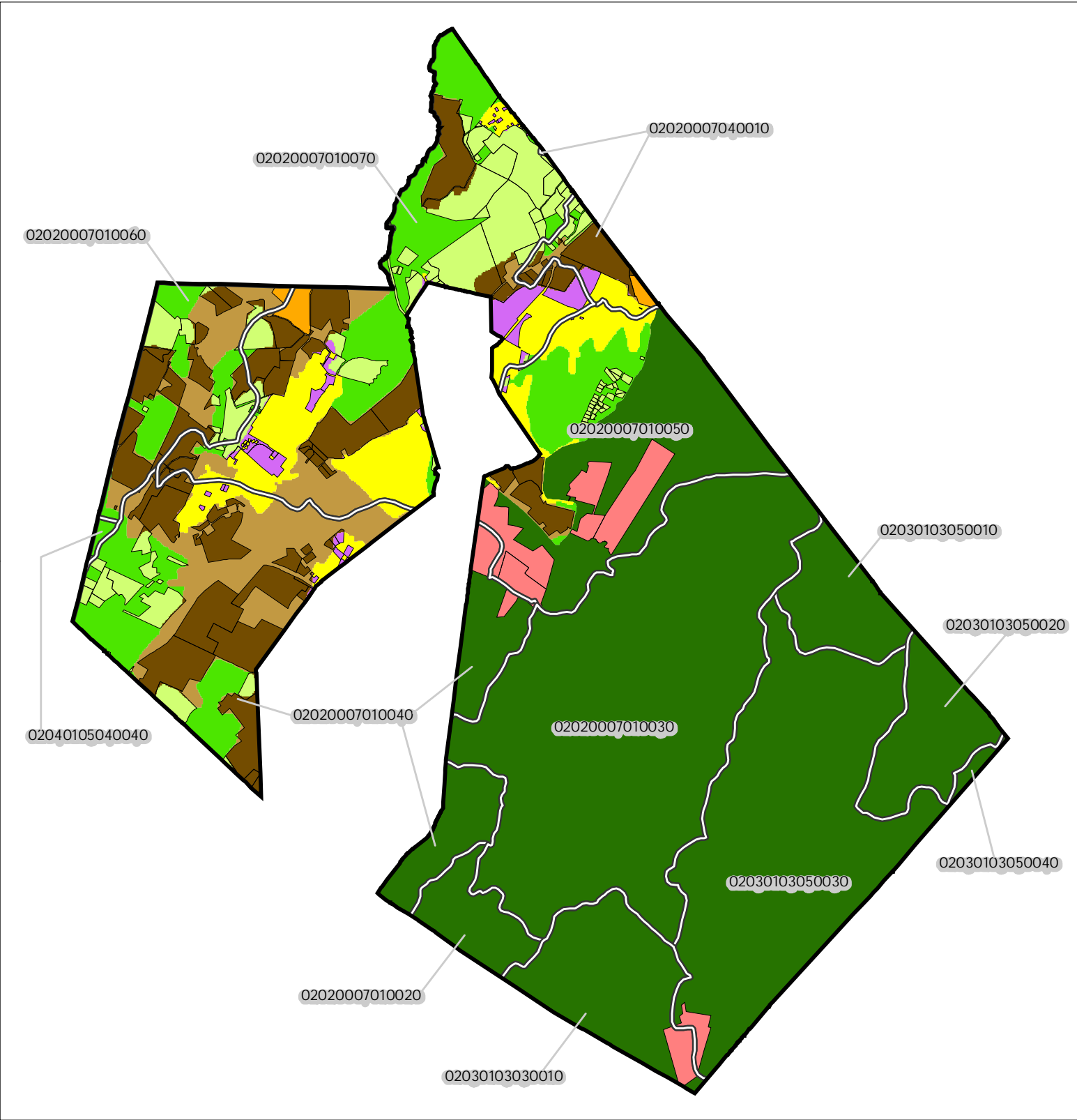


Figure 1: Municipal Build-Out Report Septic System Yield by HUC14 and LUCM Zone *
 HARDYSTON TOWNSHIP



Potential Undevelopable Lands	Potential Oversized Lots	Potential Developable Lands	Potential Redevelopable Lands
Conservation Zone	in Conservation Zone	in Conservation Zone	in Conservation Zone
Existing Community Zone	in Existing Community Zone	in Existing Community Zone	in Existing Community Zone
Protection Zone	in Protection Zone	in Protection Zone	in Protection Zone
Preservation Area	in Preservation Area	in Preservation Area	in Preservation Area

HUC14 Subwatersheds

02020007010030 HUC14 ID Number

Miles

0 1 2

* Refer to Table 1 for Septic System Yield values, indexed by HUC14 ID

Figure 2: Municipal Build-Out Report Environmental Constrained Lands

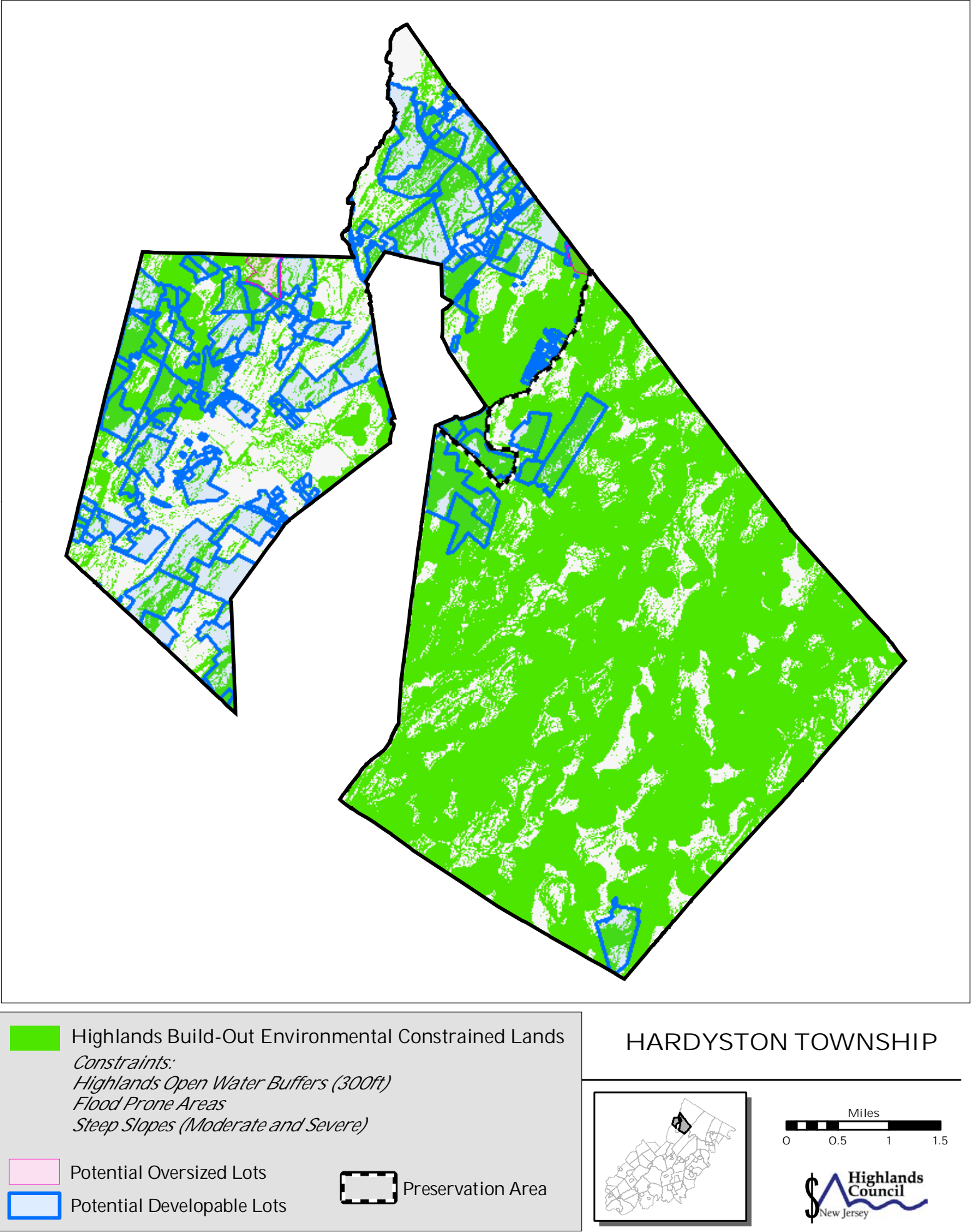
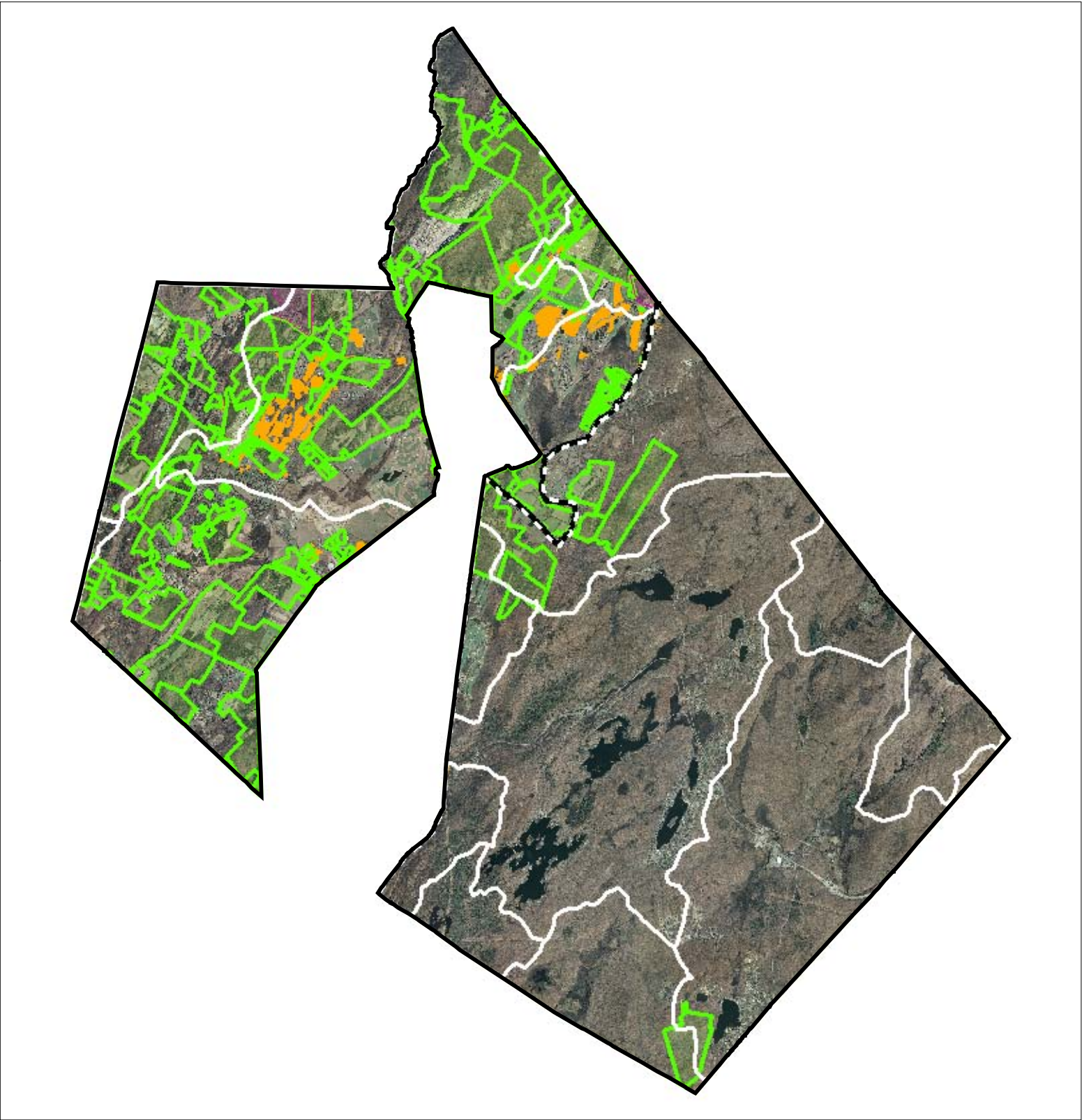

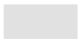



Figure 3: Municipal Build-Out Report RMP HDSF Wastewater Utilities

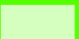



Highlands Domestic Sewerage Facilities "2008 RMP Existing Area Served"

 *Upper Walkill*

 HUC14 Subwatersheds

 Potential Oversized Lots

 Potential Developable Lots

 Preservation Area

HARDYSTON TOWNSHIP

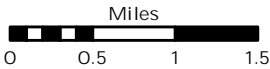
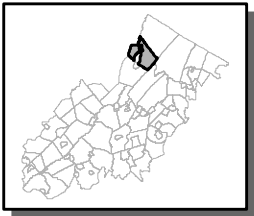


Figure 4: Municipal Build-Out Report RMP Public Community Water System Utilities

