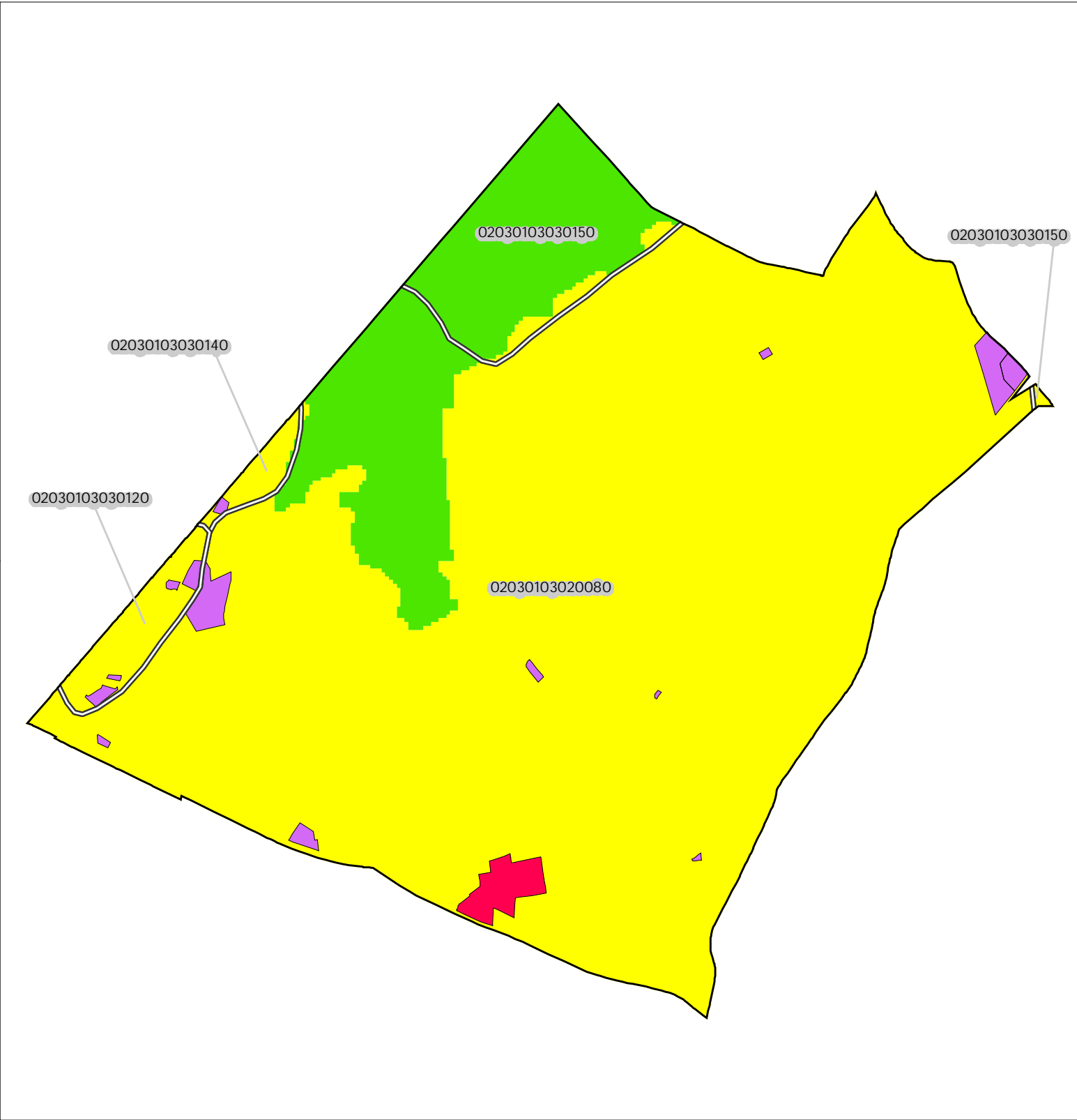


Figure 1: Municipal Build-out Report Septic System Yield by HUC14 and LUCM Zone \*

# MOUNTAIN LAKES BOROUGH



<b>Potential Undevelopable Lands</b> <div>Conservation Zone</div> <div>Existing Community Zone</div> <div>Protection Zone</div> <div>Preservation Area</div>	<b>Potential Oversized Lots</b> <div>in Conservation Zone</div> <div>in Existing Community Zone</div> <div>in Protection Zone</div> <div>in Preservation Area</div>	<b>Potential Developable Lands</b> <div>in Conservation Zone</div> <div>in Existing Community Zone</div> <div>in Protection Zone</div> <div>in Preservation Area</div>	<b>Potential Redevelopable Lands</b> <div>in Conservation Zone</div> <div>in Existing Community Zone</div> <div>in Protection Zone</div> <div>in Preservation Zone</div>
---	--	---	---

HUC14 Subwatersheds

02030103020080 HUC14 ID Number

Miles

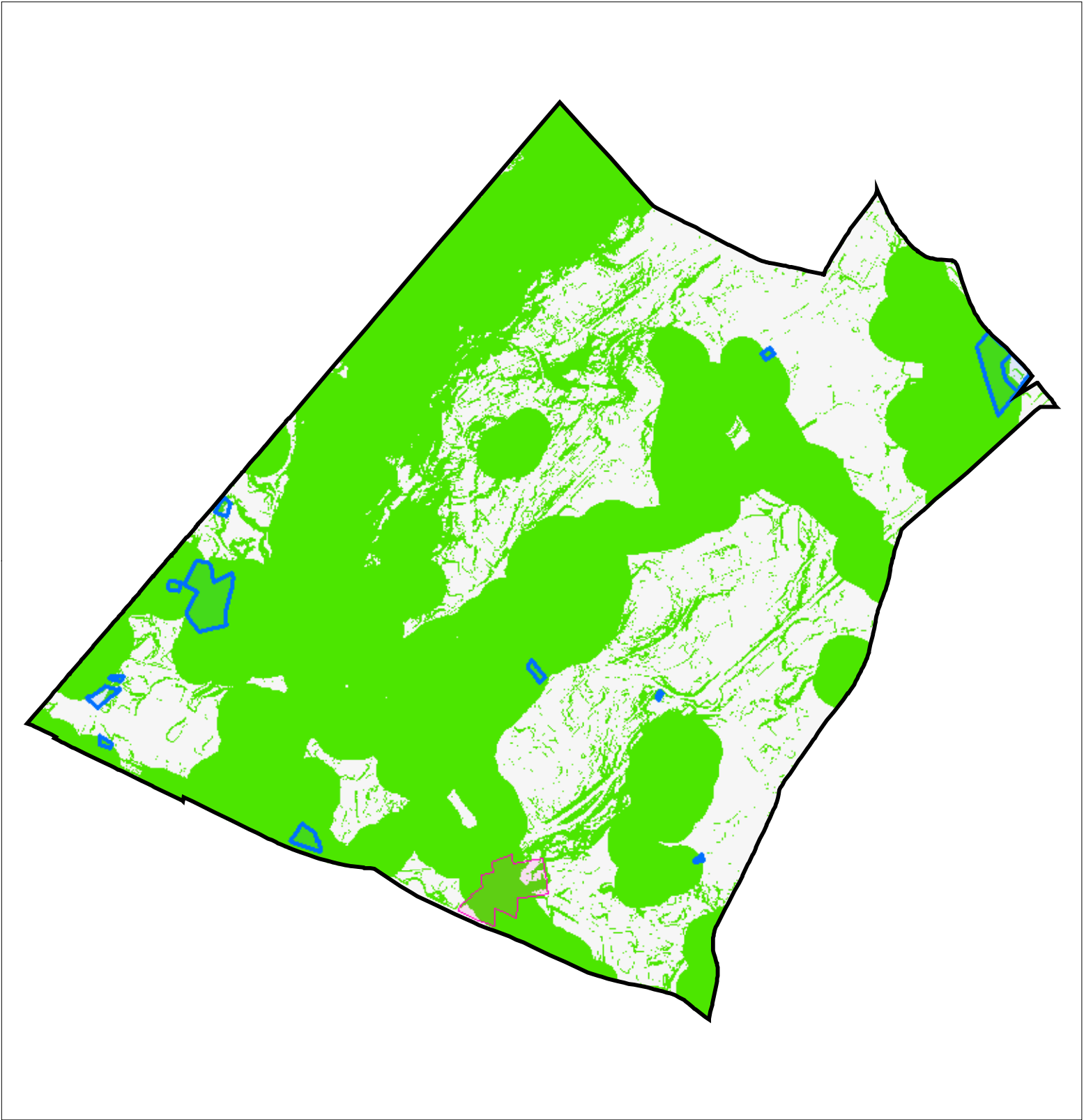
0 0.25 0.5

Highlands Council

New Jersey

\* Refer to Table 1 for Septic System Yield values, indexed by HUC14 ID

Figure 2: Municipal Build-out Report Environmental Constrained Lands



Highlands Build-Out Environmental Constrained Lands  
*Constraints:*  
*Highlands Open Water Buffers (300ft)*  
*Flood Prone Areas*  
*Steep Slopes (Moderate and Severe)*

Potential Oversized Lots

Potential Developable Lots

Preservation Area

MOUNTAIN LAKES  
BOROUGH

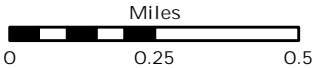
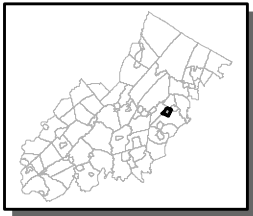
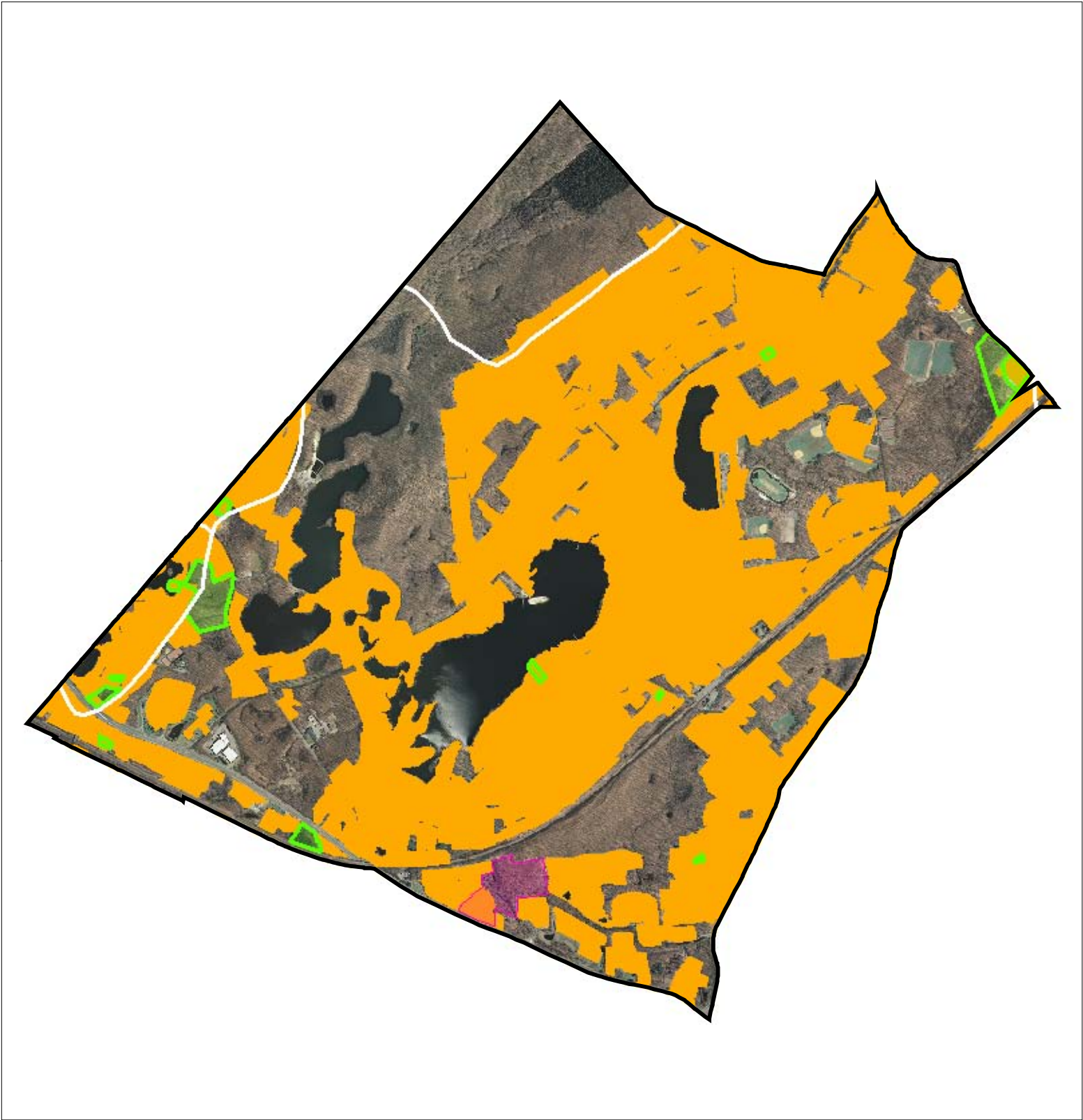

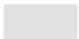



Figure 3: Municipal Build-out Report RMP HDSF Watewater Utilities

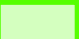



Highlands Domestic Sewerage Facilities "2008 RMP Existing Area Served"

 *Parsippany-Troy Hills SA*

 HUC14 Subwatersheds

 Potential Oversized Lots

 Potential Developable Lots

 Preservation Area

MOUNTAIN LAKES  
BOROUGH

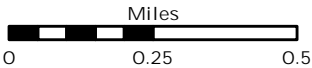
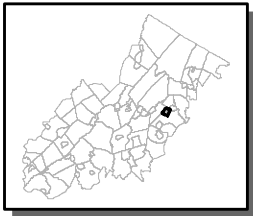
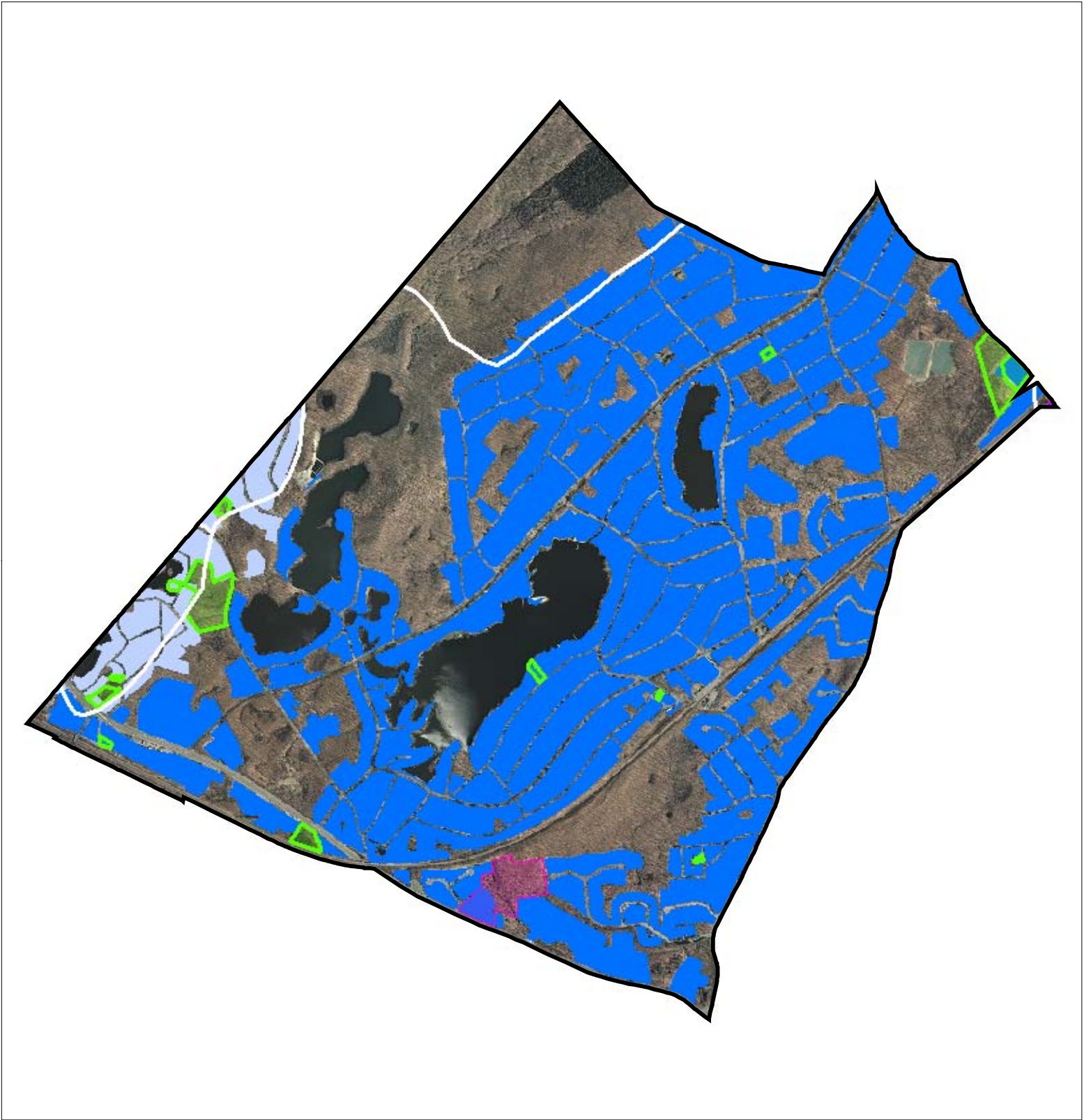




Figure 4: Municipal Build-out Report RMP Public Community Water System Utilities



Public Community Water Systems "2008 RMP Existing Area Served"

*DENVILLE TOWNSHIP WATER DEPARTMENT*

*MOUNTAIN LAKES WATER DEPARTMENT*

*PARSIPPANY-TROY HILLS WATER DEPARTMENT*

HUC14 Subwatersheds

Potential Oversized Lots

Potential Developable Lots

Preservation Area

MOUNTAIN LAKES  
BOROUGH

