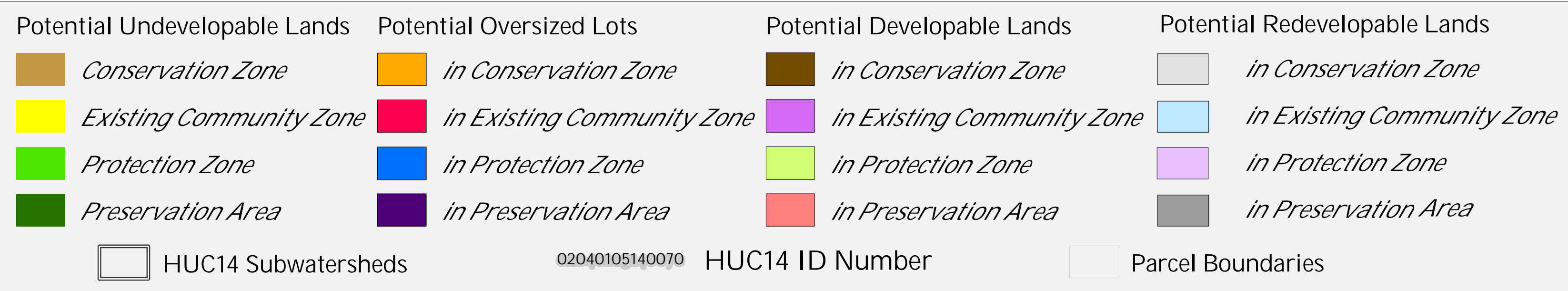


Figure 1: Municipal Build-out Report Septic System Yield by HUC14 and LUCM Zone \*

MINE HILL TOWNSHIP



\* Refer to Table 1 for Septic System Yield values, indexed by HUC14 ID

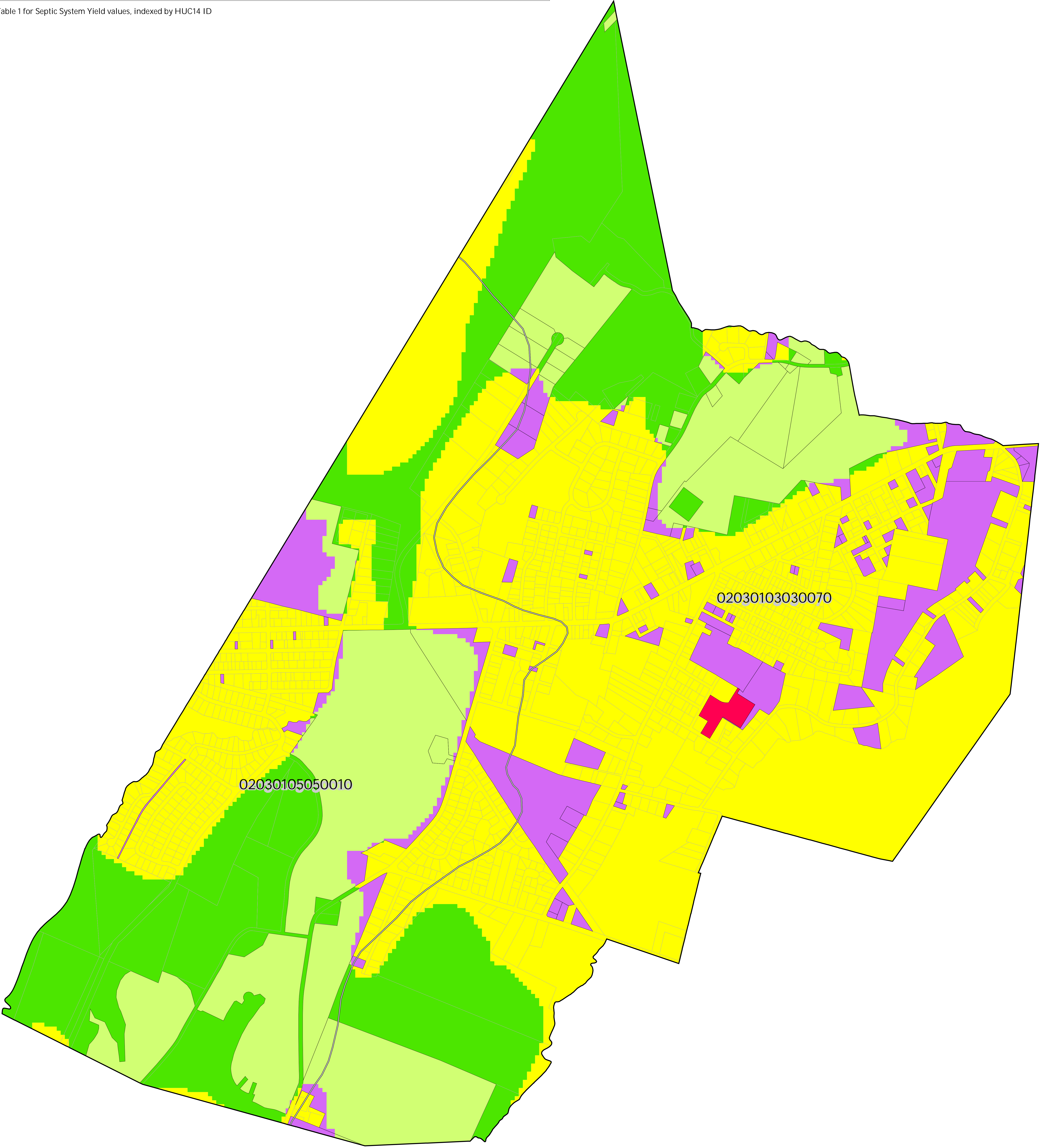




Figure 2: Municipal Build-out Report Environmental Constrained Lands  
MINE HILL TOWNSHIP

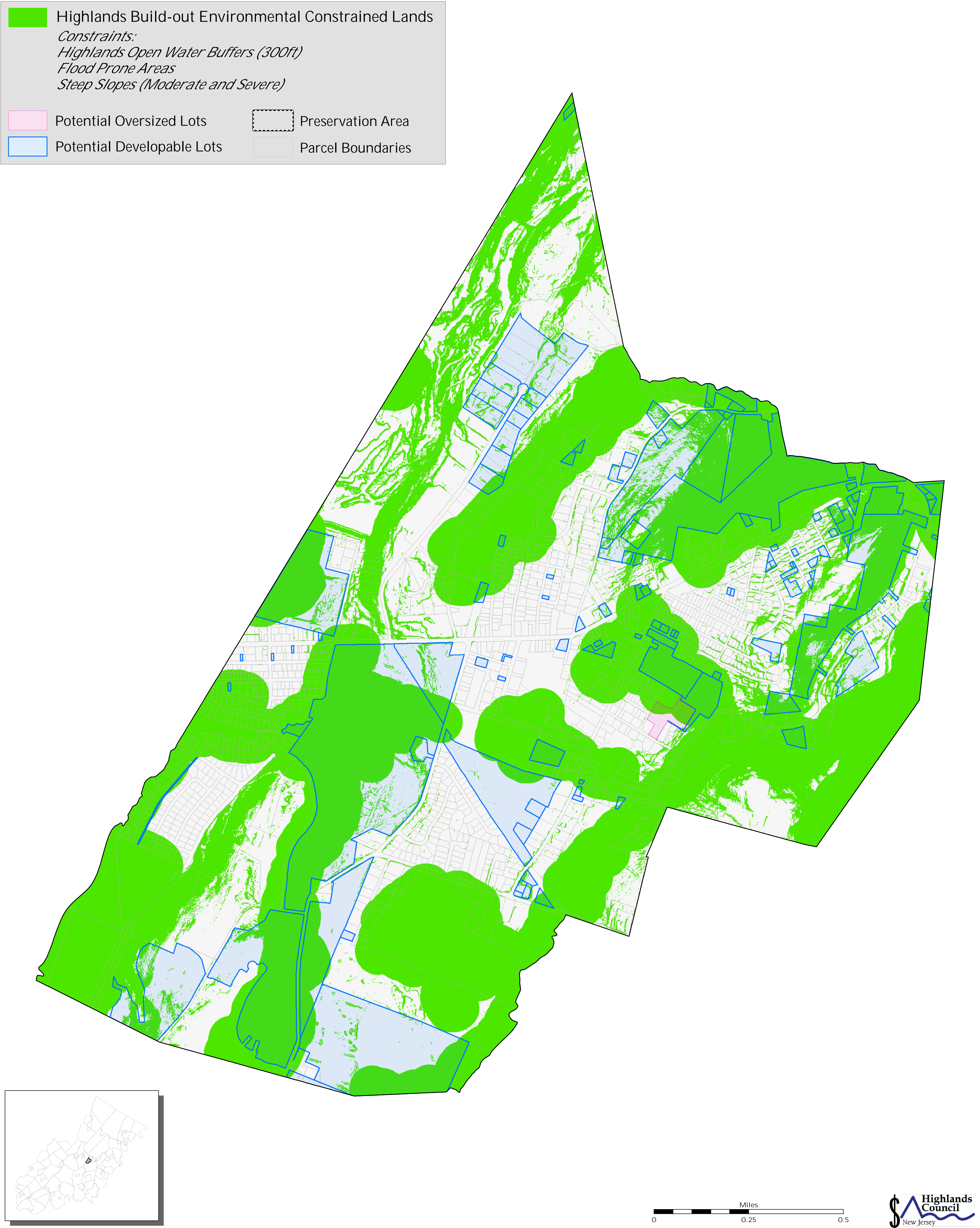




Figure 3: Municipal Build-out Report RMP HDSF Wastewater Utilities  
MINE HILL TOWNSHIP

Highlands Domestic Sewerage Facilities "2008 RMP Existing Area Served"

Rockaway Valley Regional Sewerage Authority

Ajax Terrace WPCP

HUC14 Subwatersheds

Potential Oversized Lots

Potential Developable Lots

Preservation Area

Parcel Boundaries

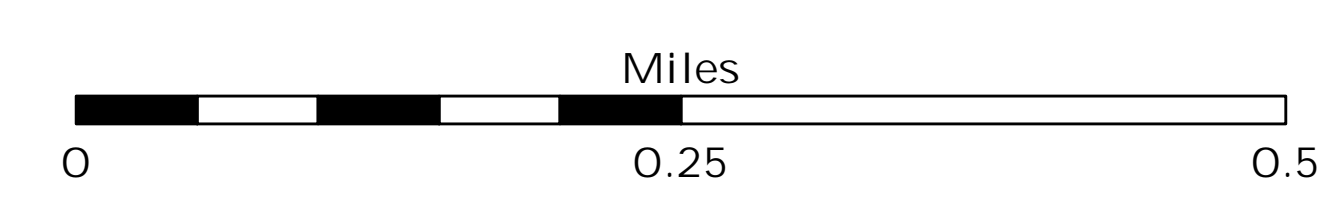
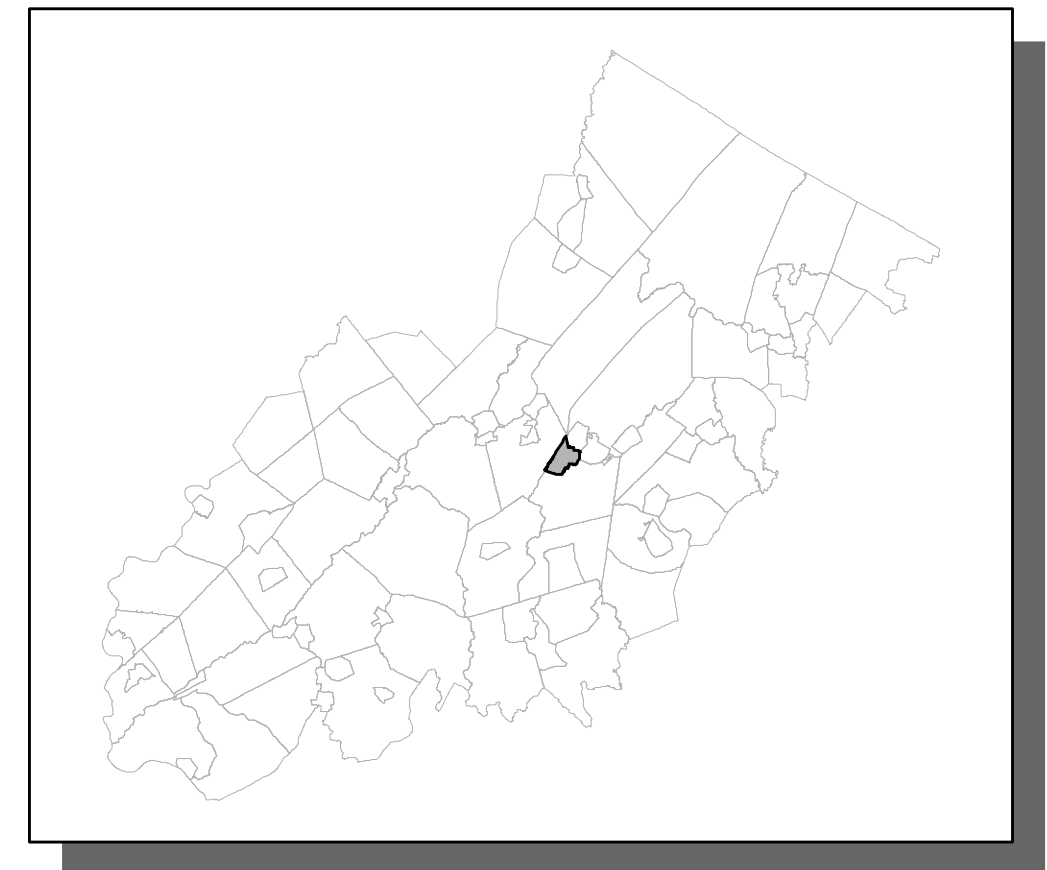
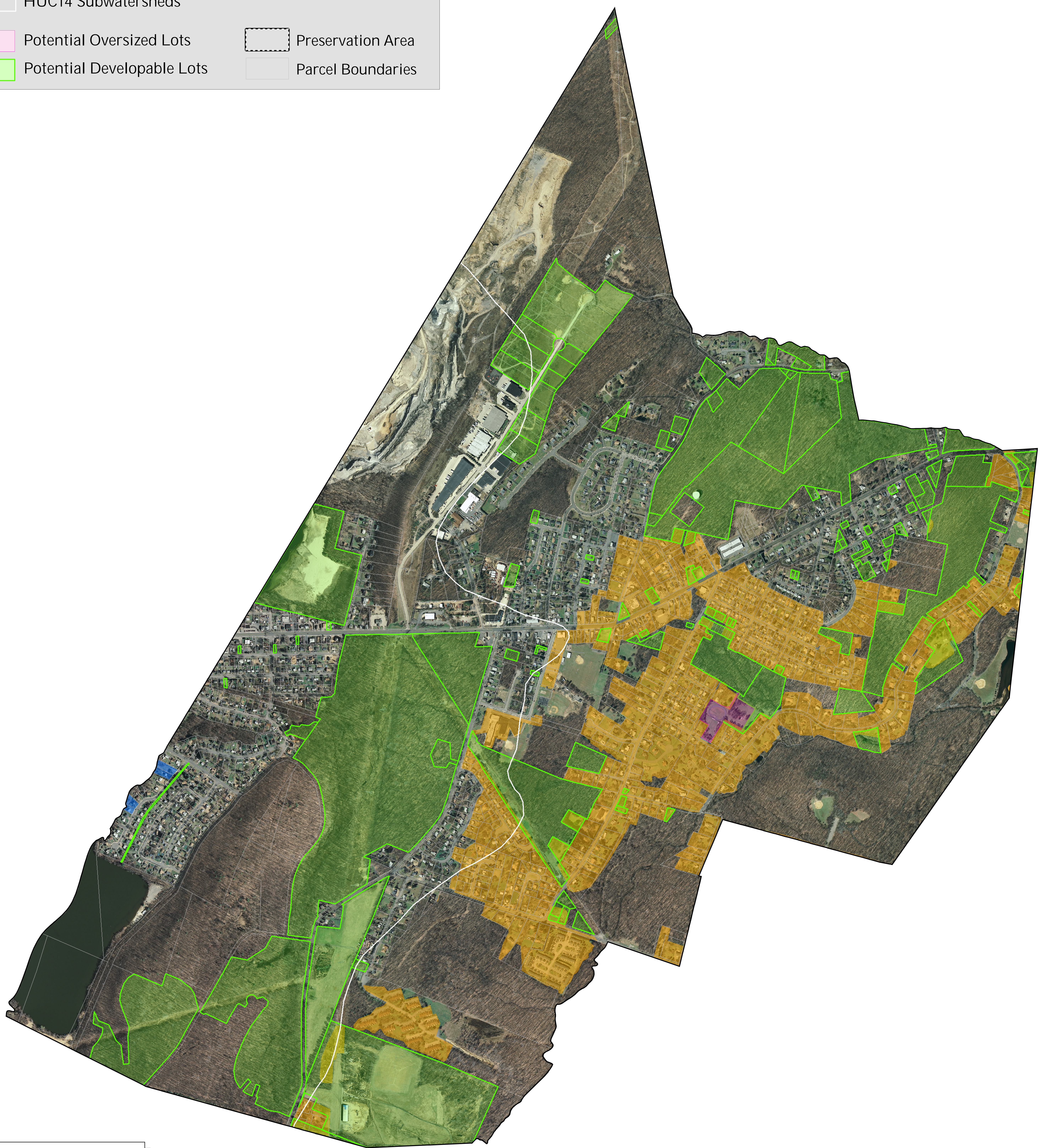




Figure 4: Municipal Build-out Report RMP Public Community Water System Utilities  
MINE HILL TOWNSHIP

