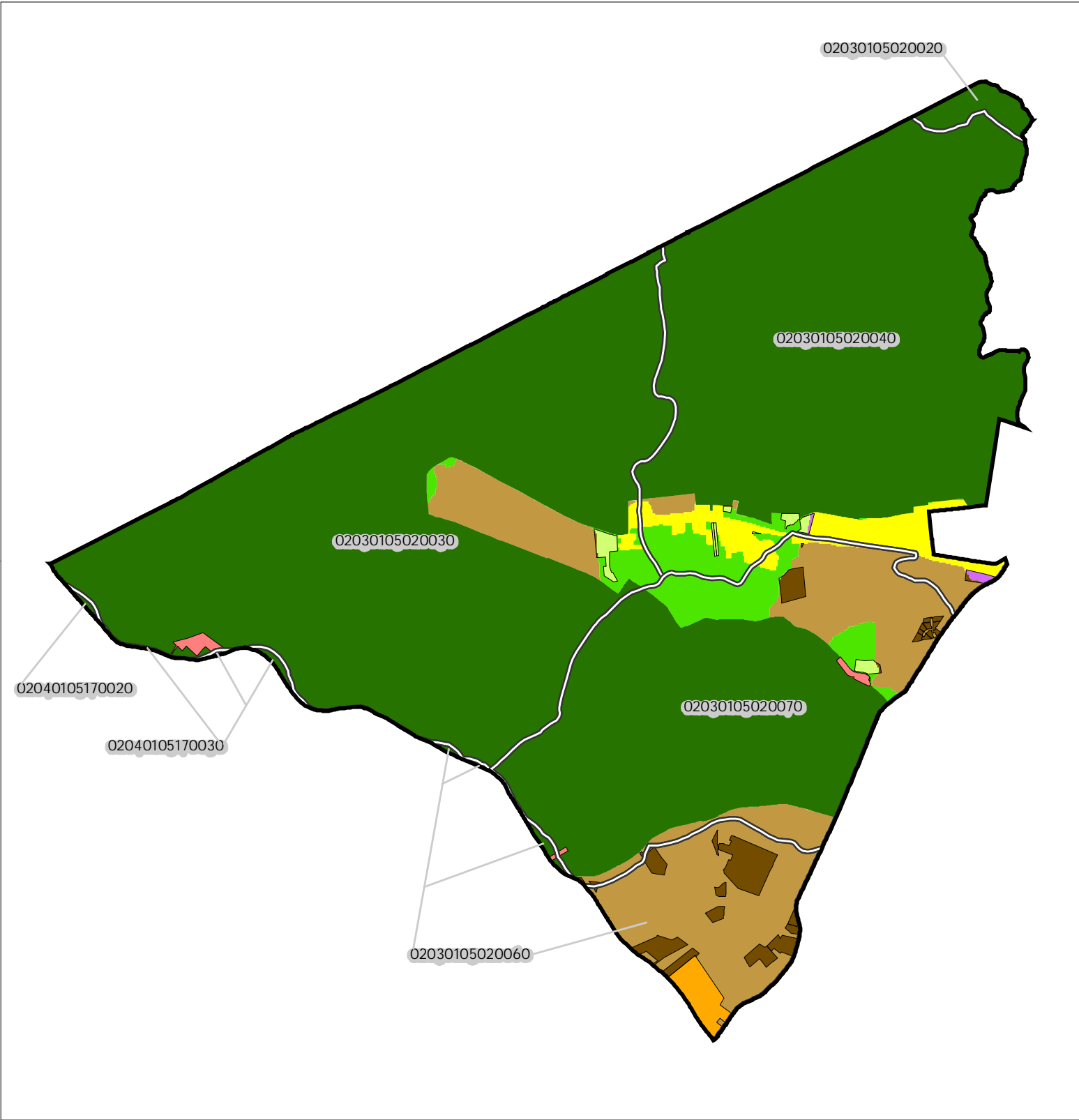


Figure 1: Municipal Build-out Report Septic System Yield by HUC14 and LUCM Zone *
 UNION TOWNSHIP



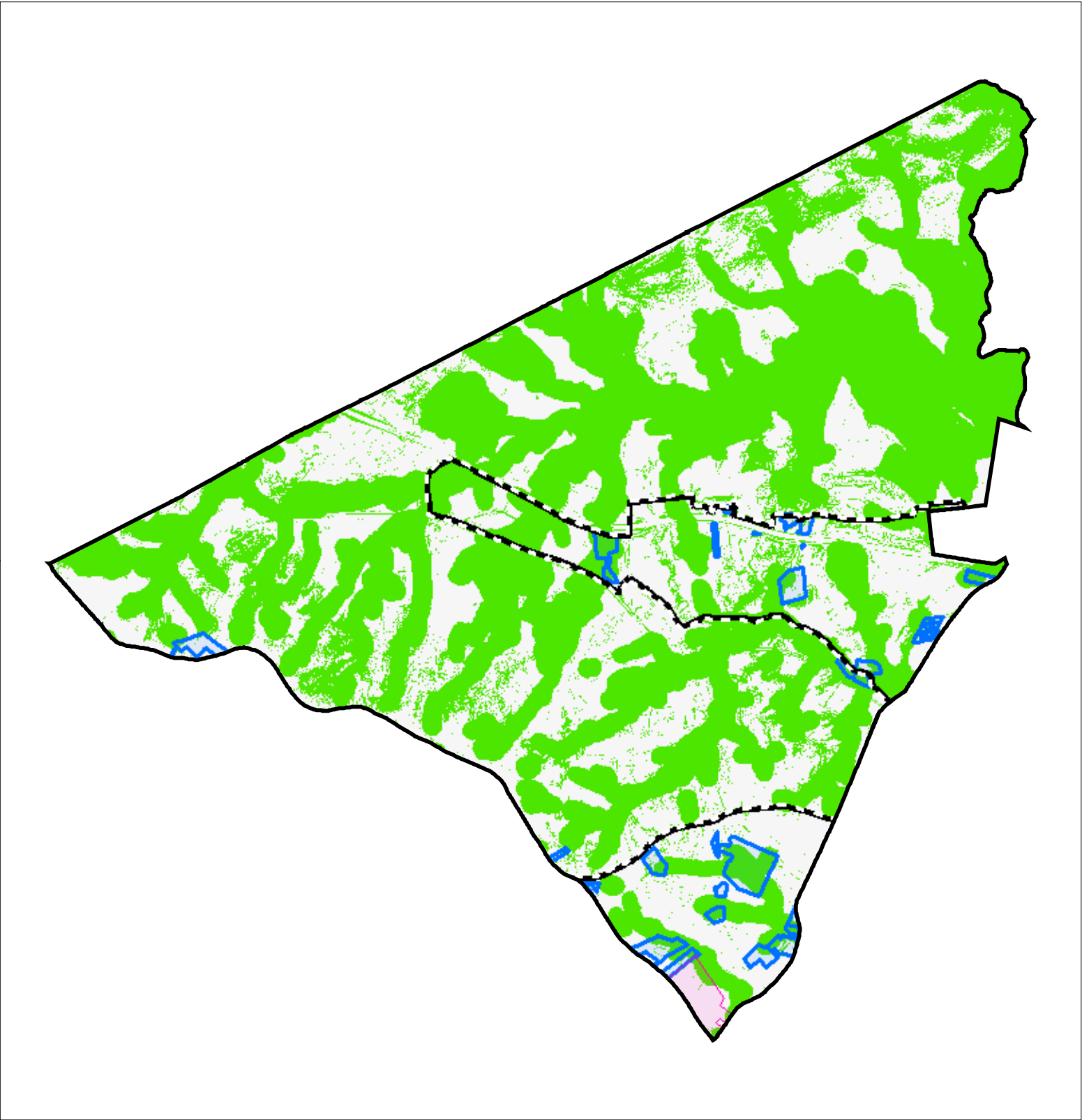
Potential Undevelopable Lands	Potential Oversized Lots	Potential Developable Lands	Potential Redevelopable Lands
Conservation Zone	in Conservation Zone	in Conservation Zone	in Conservation Zone
Existing Community Zone	in Existing Community Zone	in Existing Community Zone	in Existing Community Zone
Protection Zone	in Protection Zone	in Protection Zone	in Protection Zone
Preservation Area	in Preservation Area	in Preservation Area	in Preservation Area


HUC14 Subwatersheds
 HUC14 ID Number

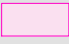
Miles
 0 1 2

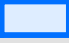
* Refer to Table 1 for Septic System Yield values, indexed by HUC14 ID


Figure 2: Municipal Build-out Report Environmental Constrained Lands




 Highlands Build-out Environmental Constrained Lands
Constraints:
Highlands Open Water Buffers (300ft)
Flood Prone Areas
Steep Slopes (Moderate and Severe)

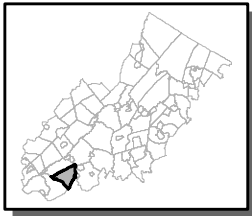
 Potential Oversized Lots

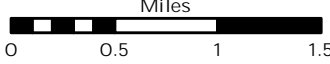
 Potential Developable Lots

 Potential Redevelopable Lots

 Preservation Area

UNION TOWNSHIP






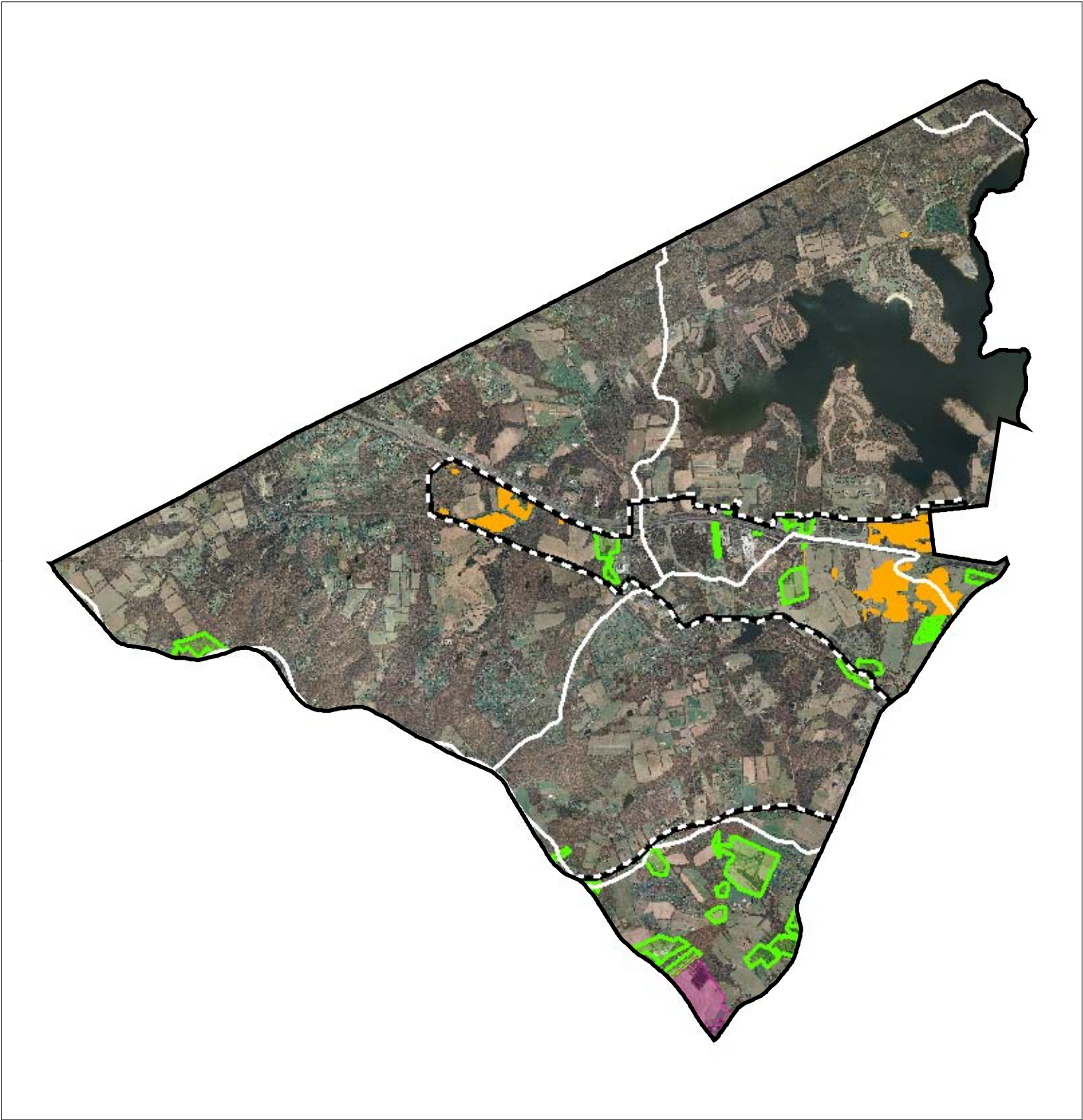




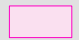
Figure 3: Municipal Build-out Report RMP HDSF Wastewater Utilities

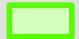



Highlands Domestic Sewerage Facilities "2008 RMP Existing Area Served"


 *Town of Clinton WTP*

 HUC14 Subwatersheds

 Potential Oversized Lots

 Potential Developable Lots

 Potential Redevelopable Lots

 Preservation Area

UNION TOWNSHIP

Miles
0 0.5 1 1.5


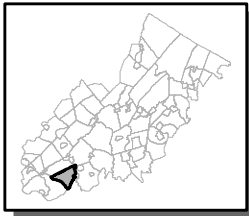
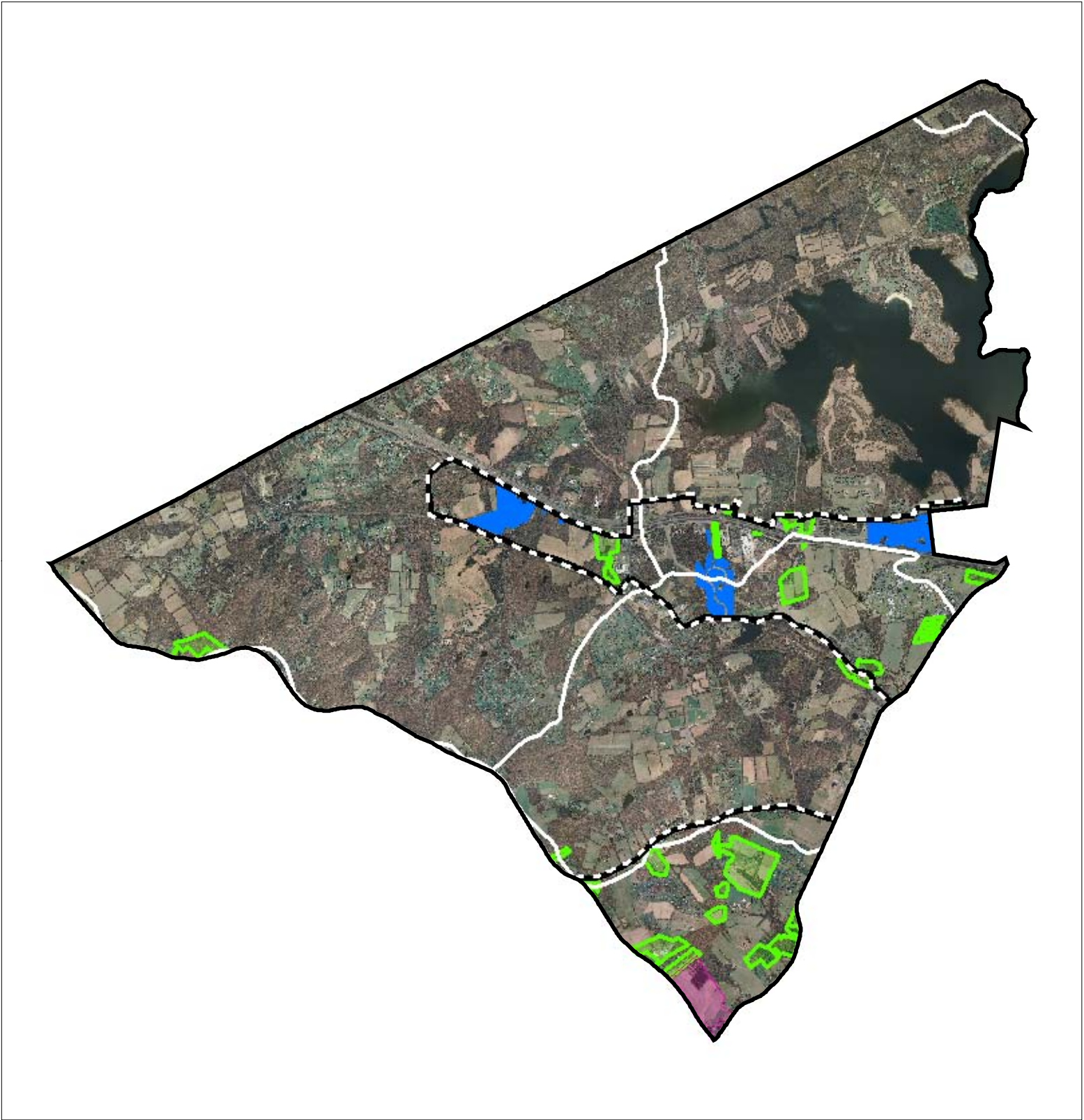





Figure 4: Municipal Build-out Report RMP Public Community Water System Utilities

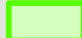



Public Community Water Systems "2008 RMP Existing Area Served"


 *CLINTON WATER DEPARTMENT*

 HUC14 Subwatersheds

 Potential Oversized Lots

 Potential Developable Lots

 Potential Redevelopable Lots

 Preservation Area

UNION TOWNSHIP

