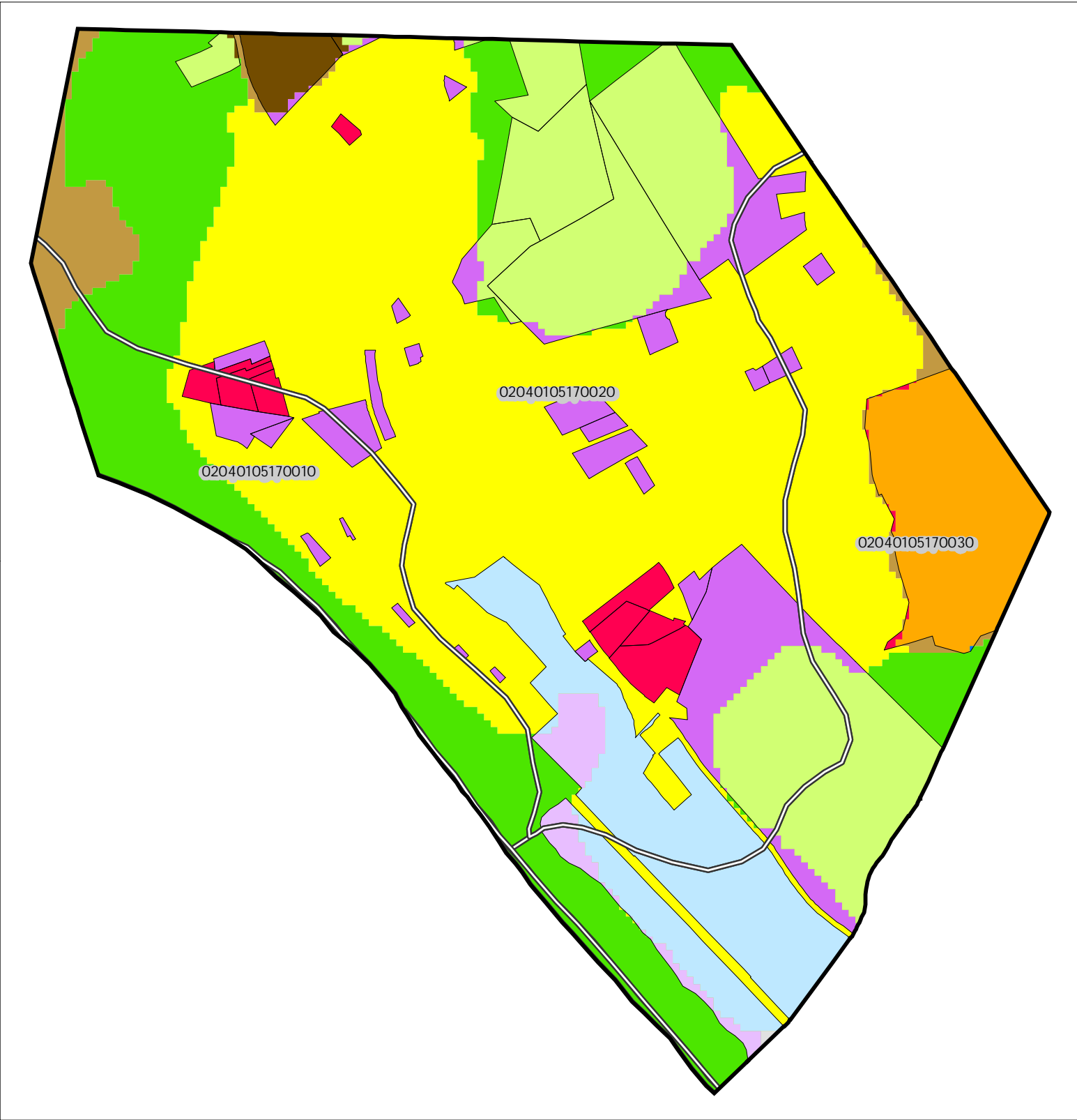


Figure 1: Municipal Build-out Report Septic System Yield by HUC14 and LUCM Zone *
MILFORD BOROUGH



Potential Undevelopable Lands	Potential Oversized Lots	Potential Developable Lands	Potential Redevelopable Lands
Conservation Zone	in Conservation Zone	in Conservation Zone	in Conservation Zone
Existing Community Zone	in Existing Community Zone	in Existing Community Zone	in Existing Community Zone
Protection Zone	in Protection Zone	in Protection Zone	in Protection Zone
Preservation Area	in Preservation Area	in Preservation Area	in Preservation Area

HUC14 Subwatersheds

HUC14 ID Number

Highlands Council
New Jersey

* Refer to Table 1 for Septic System Yield values, indexed by HUC14 ID

Figure 2: Municipal Build-out Report Environmental Constrained Lands

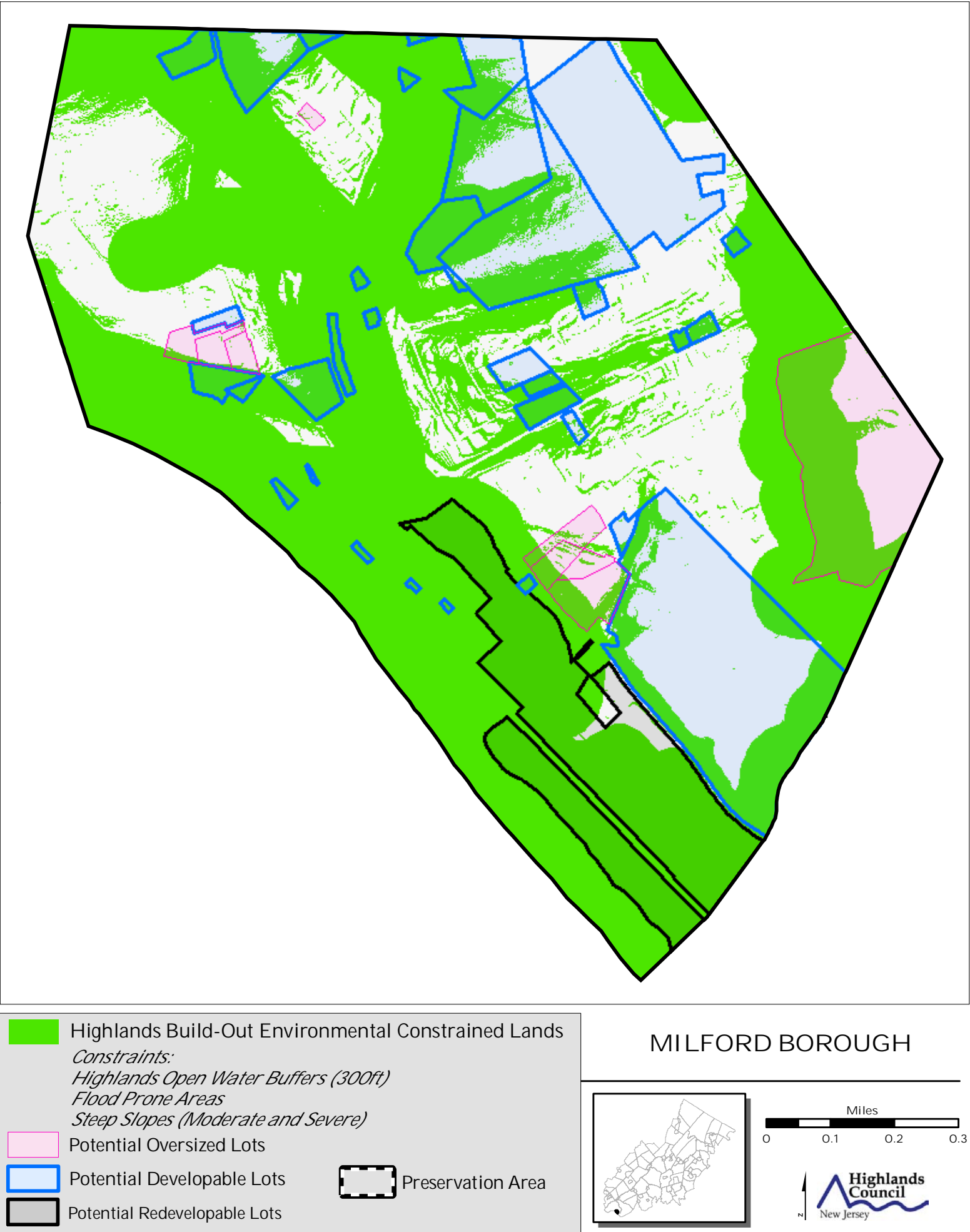
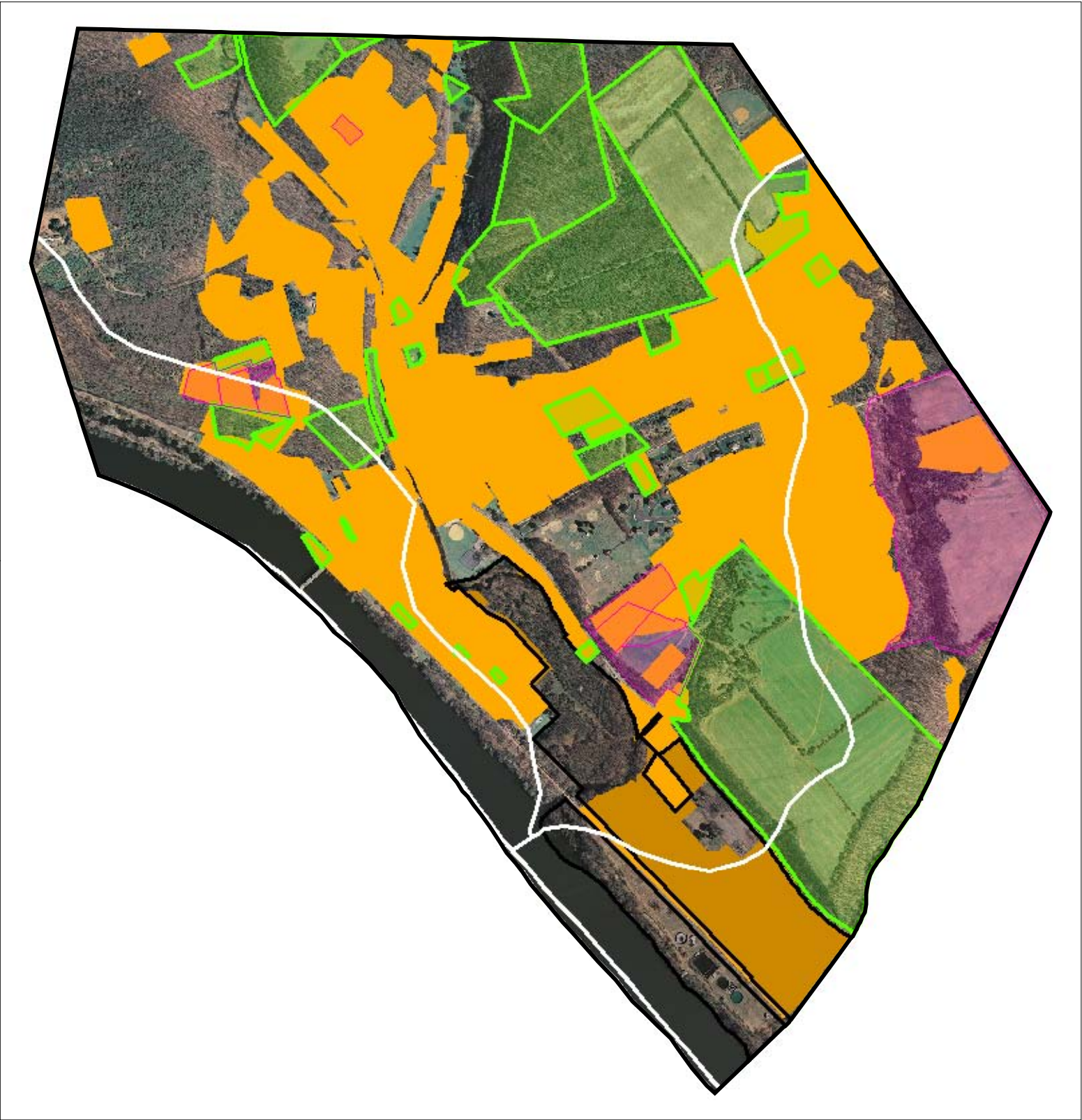


Figure 3: Municipal Build-out Report RMP HDSF Wastewater Utilities



Highlands Domestic Sewerage Facilities "2008 RMP Existing Area Served"

- Milford STP*
- HUC14 Subwatersheds
- Potential Oversized Lots
- Potential Developable Lots
- Potential Redevelopable Lots
- Preservation Area

MILFORD BOROUGH

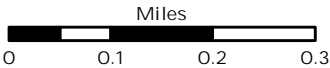
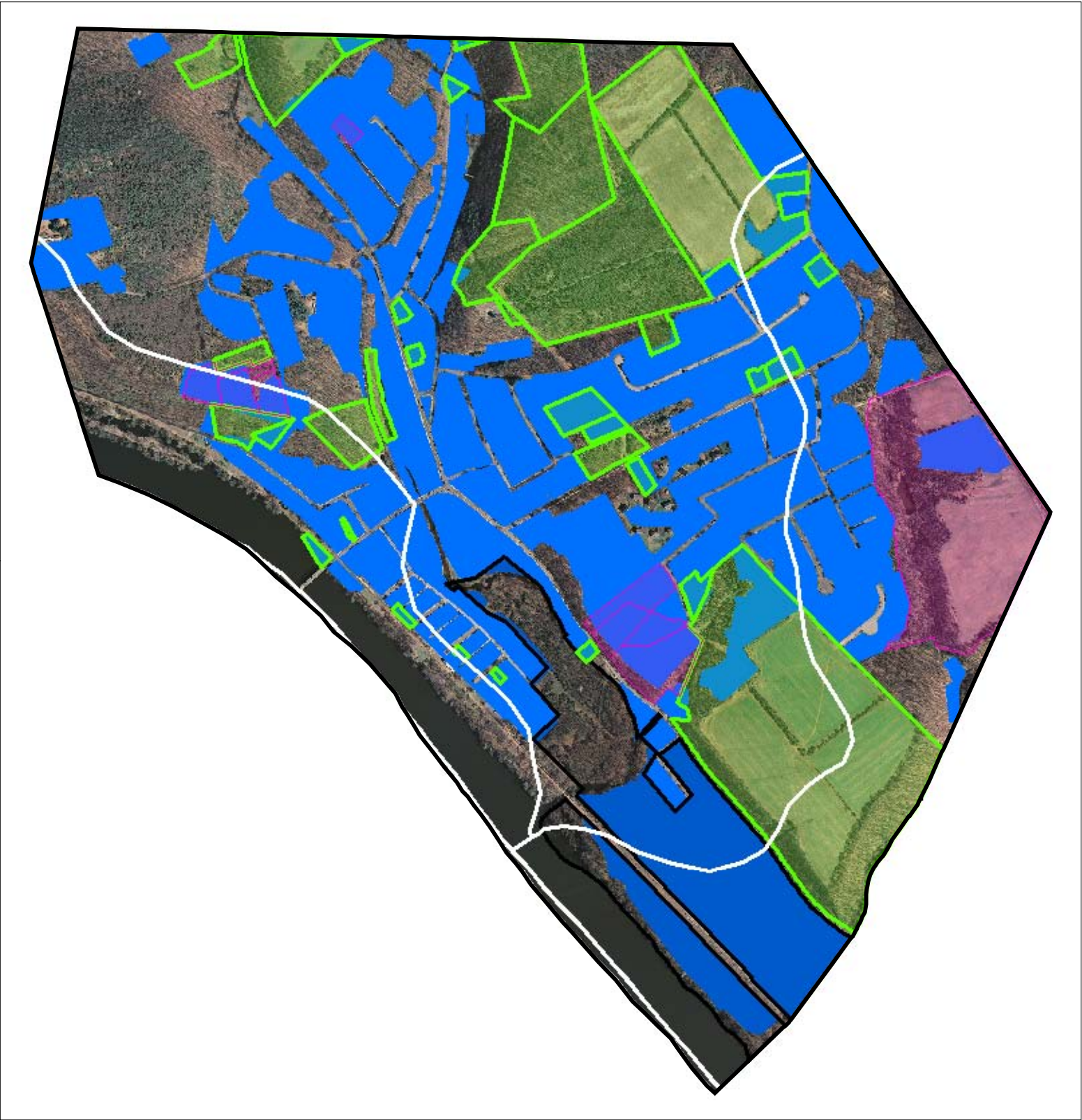





Figure 4: Municipal Build-out Report RMP Public Community Water System Utilities

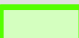



Public Community Water Systems "2008 RMP Existing Area Served"


 *MILFORD WATER DEPARTMENT*

 HUC14 Subwatersheds

 Potential Oversized Lots

 Potential Developable Lots

 Potential Redevelopable Lots

 Preservation Area

MILFORD BOROUGH

