



December 22, 2009

Ms. Eileen Swan, Executive Director
Highlands Water Protection and Planning Council
100 North Road (Route 513)
Chester, NJ 07930

Re: Petition for Plan Conformance - Glen Gardner Borough
Color Exhibits

Dear Ms. Swan,

I am enclosing color copies of select exhibits prepared for Modules 4 and 5. These exhibits were previously submitted to you by Glen Gardner Borough, accompanied by all other Basic Plan Conformance documentation. However, the hard copy documents were reproduced in black and white. Highlands Council staff has requested that any hard copy maps, other than those maps originally produced by your staff, be reproduced in color. We are responding to this request.

Please feel free to contact me if you need additional information.

Sincerely,



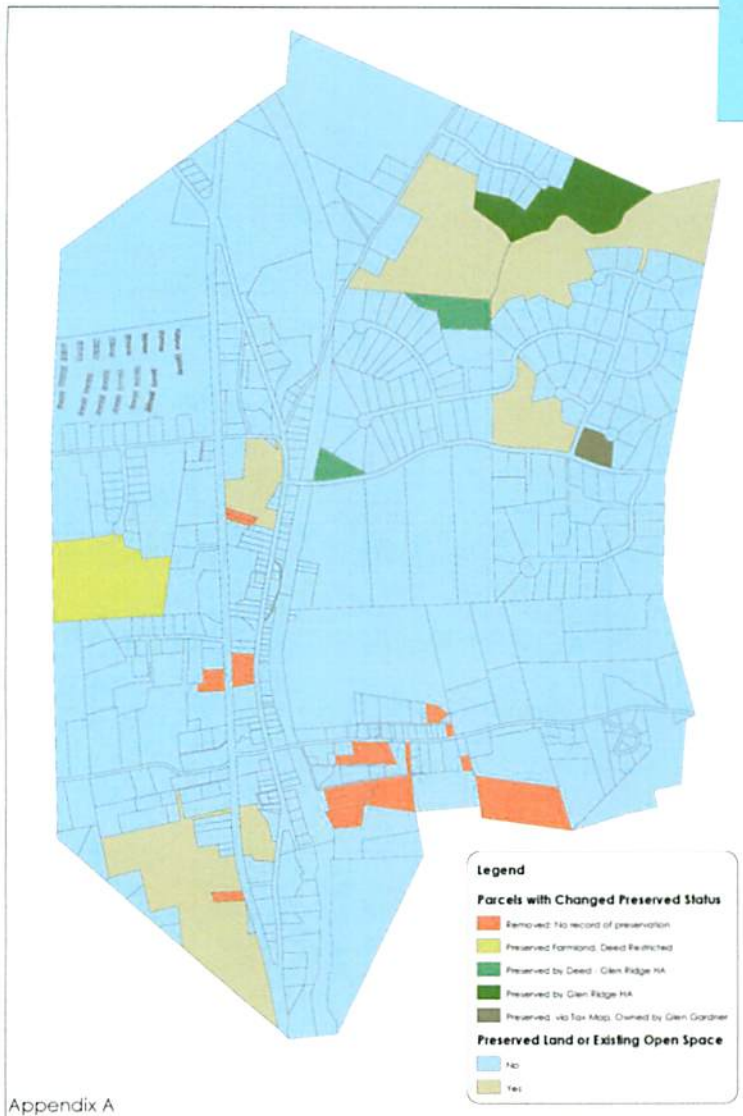
Caroline Armstrong, PP/AICP
Special Projects Director

enc.

c. Marilyn Hodgson, Borough Clerk
Judy Bass, Planning Board Secretary

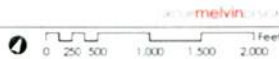
MOD 4

Appendix A. Preserved Lands – Module 1



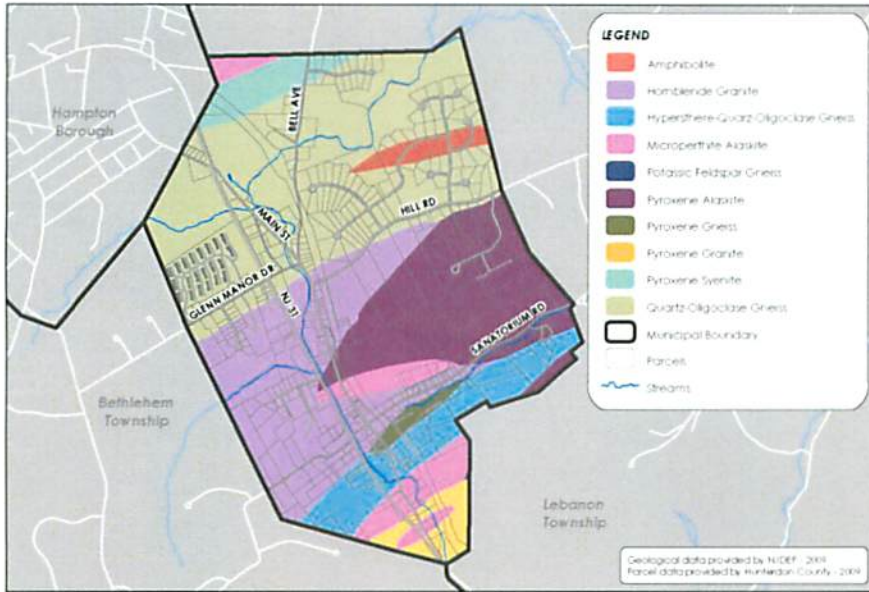
Appendix A

GLEN GARDNER
PRESERVED LANDS



Deleted: [insert municipal name]

Appendix B. Bedrock Geology



Formatted: Font: Garamond, 20 pt, Not Italic

Glen Gardner Borough
Hunterdon County, New Jersey

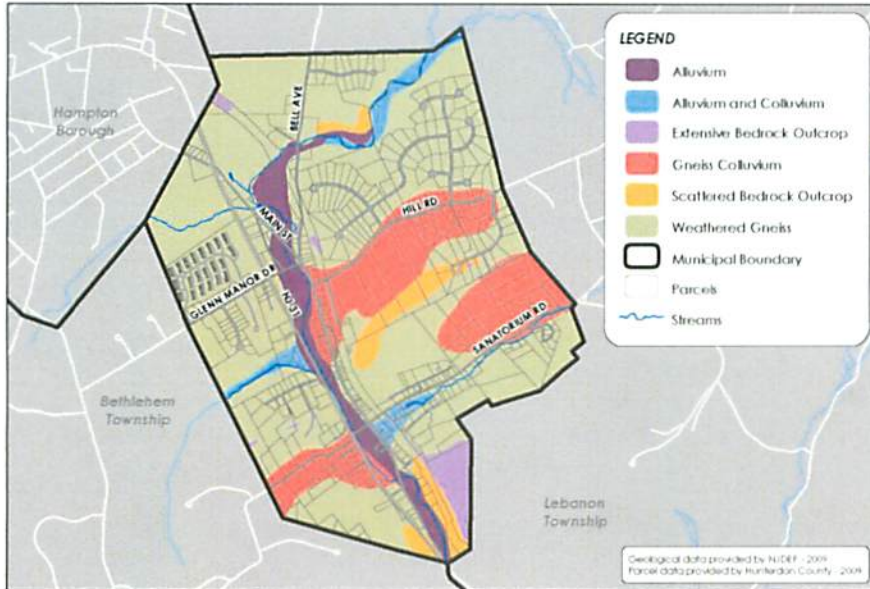
Appendix B

BEDROCK GEOLOGY



Deleted: [insert municipal name]

Appendix C. Surficial Geology

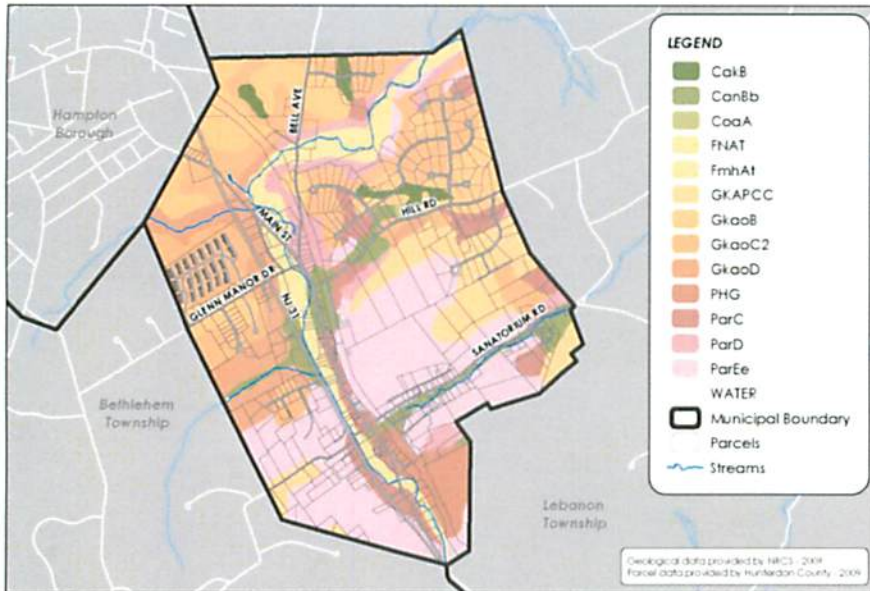


Formatted: Font: Garamond, 20 pt, Not Italic

Deleted: [insert municipal name]

Appendix D. Soils

Formatted: Font: Garamond, 20 pt, Not Italic



Glen Gardner Borough
Hunterdon County, New Jersey

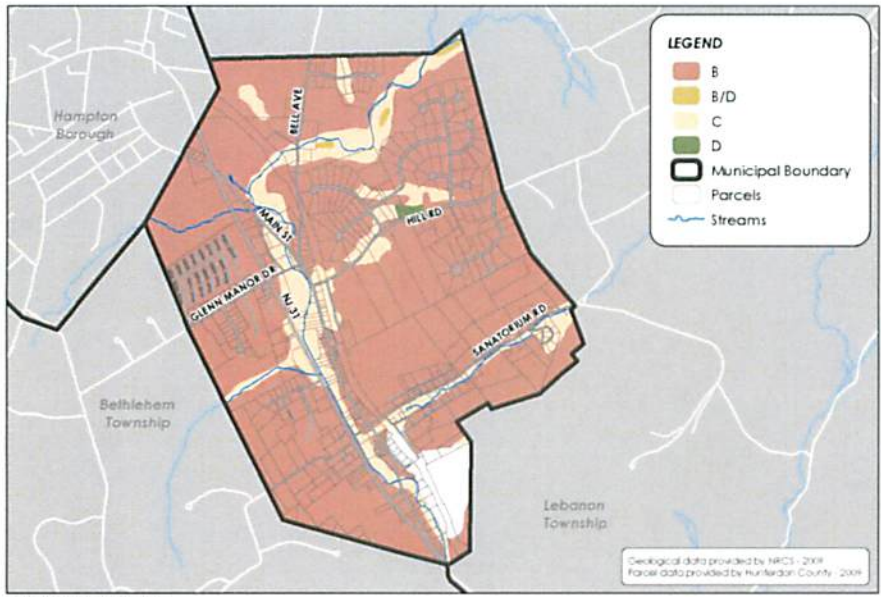
Appendix D

SOILS



Deleted: [insert municipal name]

Appendix E. Hydrologic Soil Groups

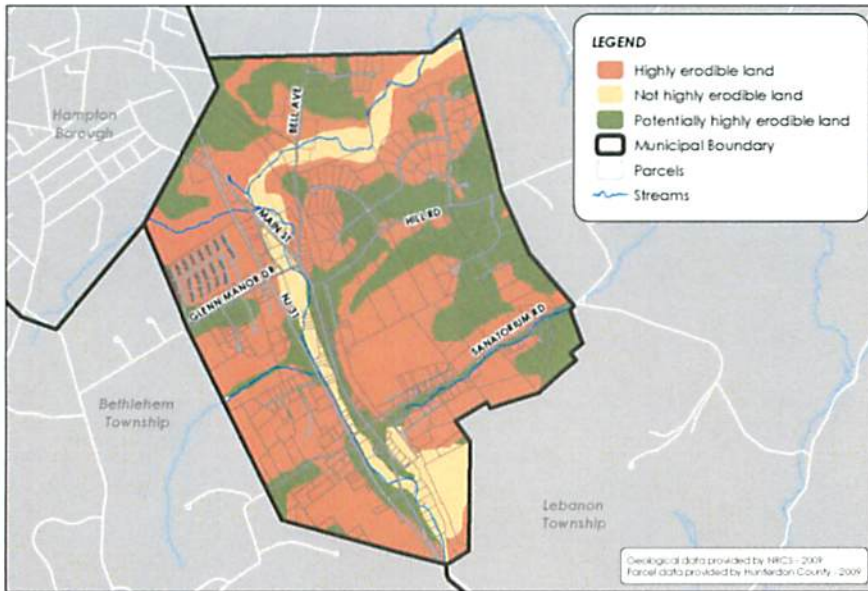


Formatted: Font: Garamond, 20 pt, Bold, Not Italic

Glen Gardner Borough
Hunterdon County, New Jersey
HYDROLOGIC SOIL GROUPS
Appendix E
0 0.125 0.25 0.5 Miles

Deleted: [insert municipal name]

Appendix F. Soil Erodibility



Deleted: ¶
¶
¶
¶
¶
¶
¶

Deleted: ¶
-----Page Break-----
¶

Formatted: Font: Garamond, 20 pt, Not Italic

Glen Gardner Borough
Hunterdon County, New Jersey

Appendix F

SOIL ERODIBILITY

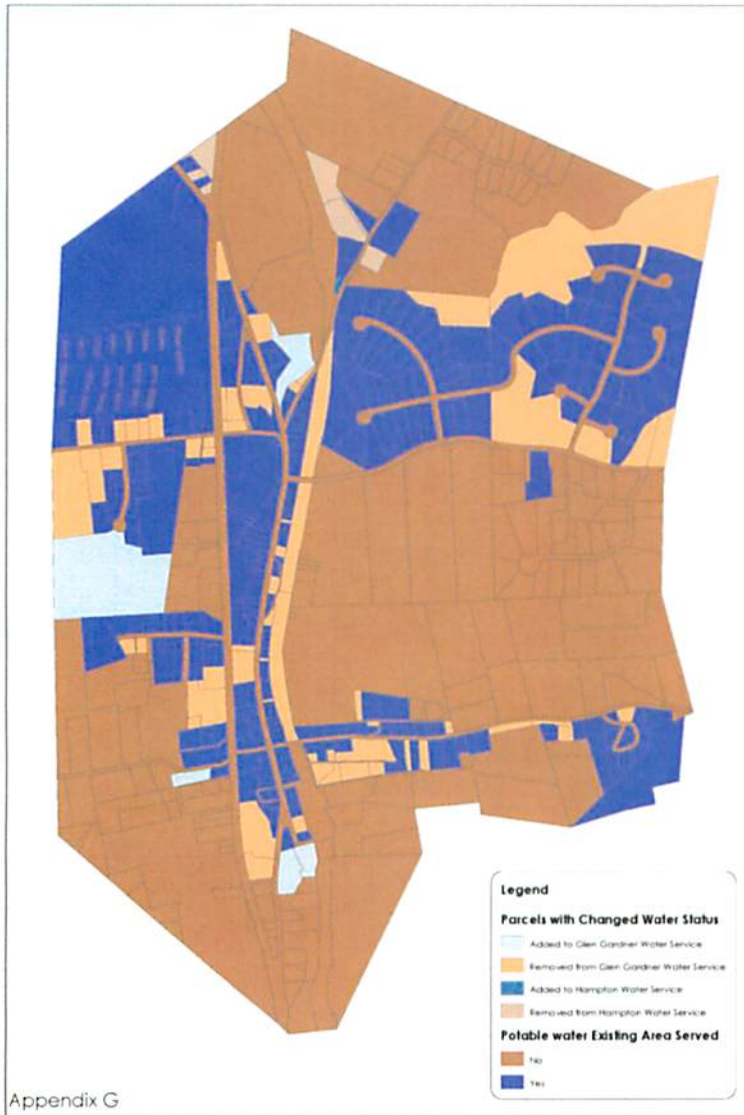


Map 2009. Parcel data provided by NRCI - 2009. Parcel data provided by Hunterdon County - 2009.

Deleted: [insert municipal name]

Appendix G. Parcels Served by Public Water – Mod 1

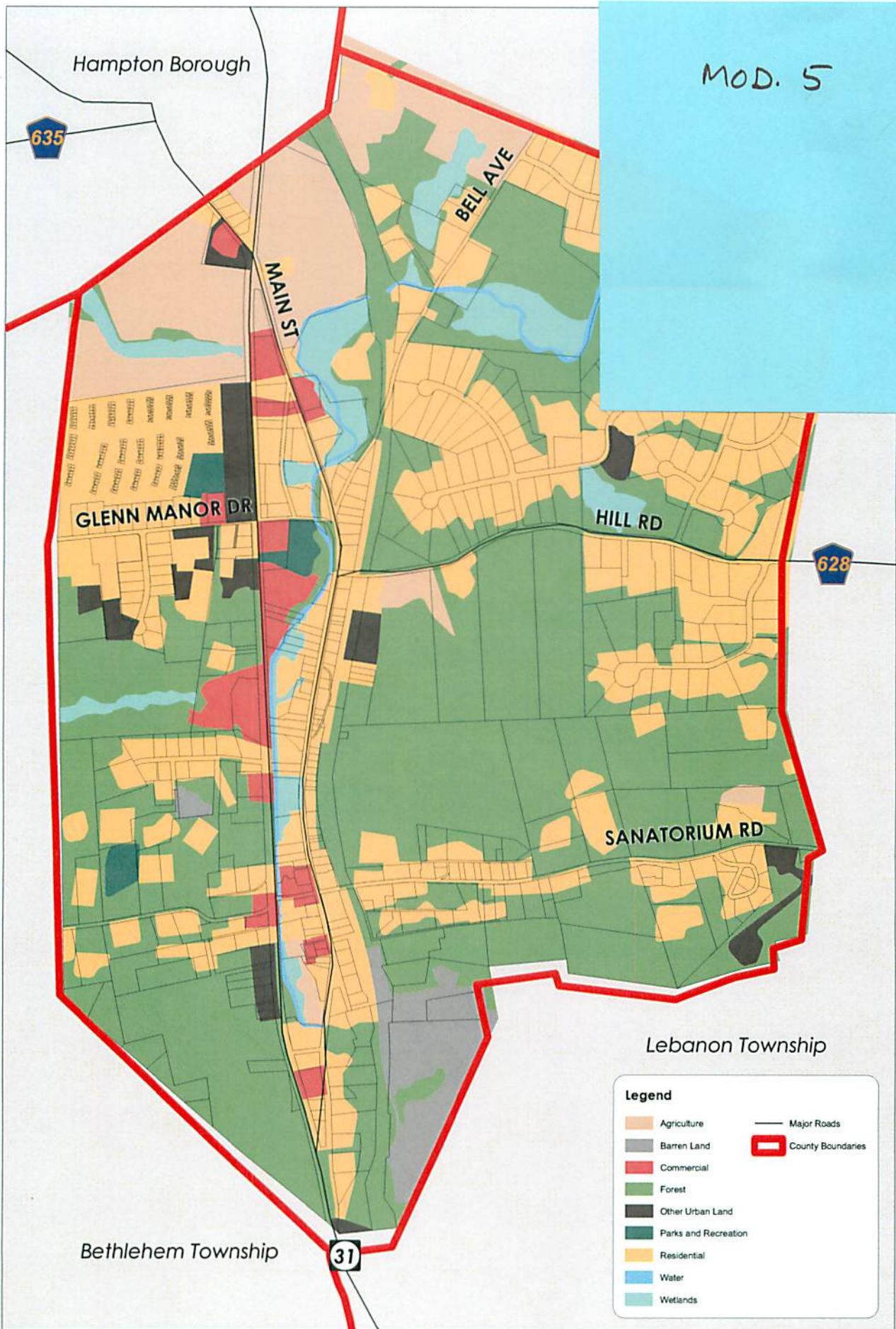
Formatted: Font: Garamond, 20 pt, Bold, Not Italic



Appendix G

GLEN GARDNER
WATER SERVED PARCELS



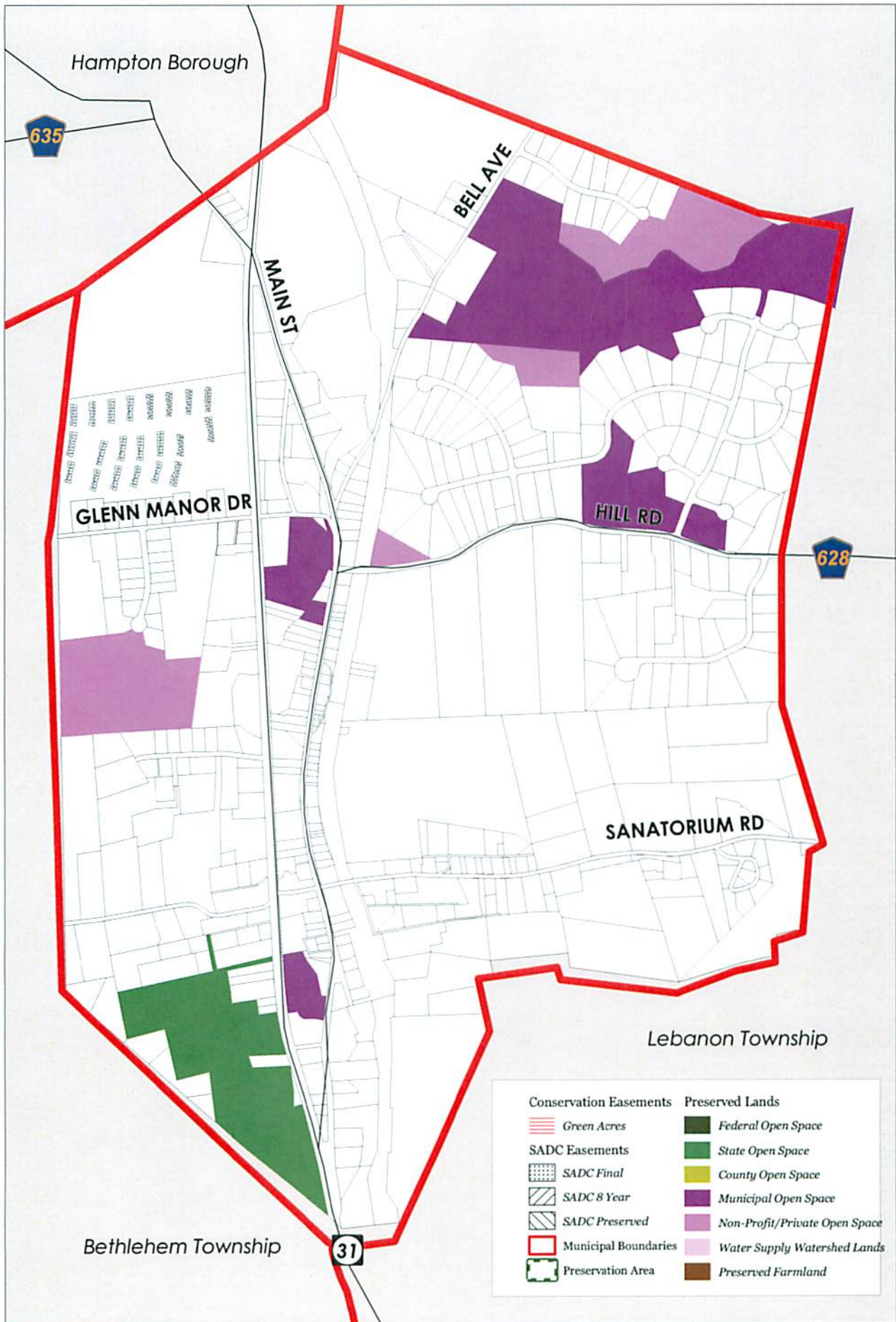


GLEN GARDNER

2002 Land Use/Land Cover

updated: JULY 20, 2009



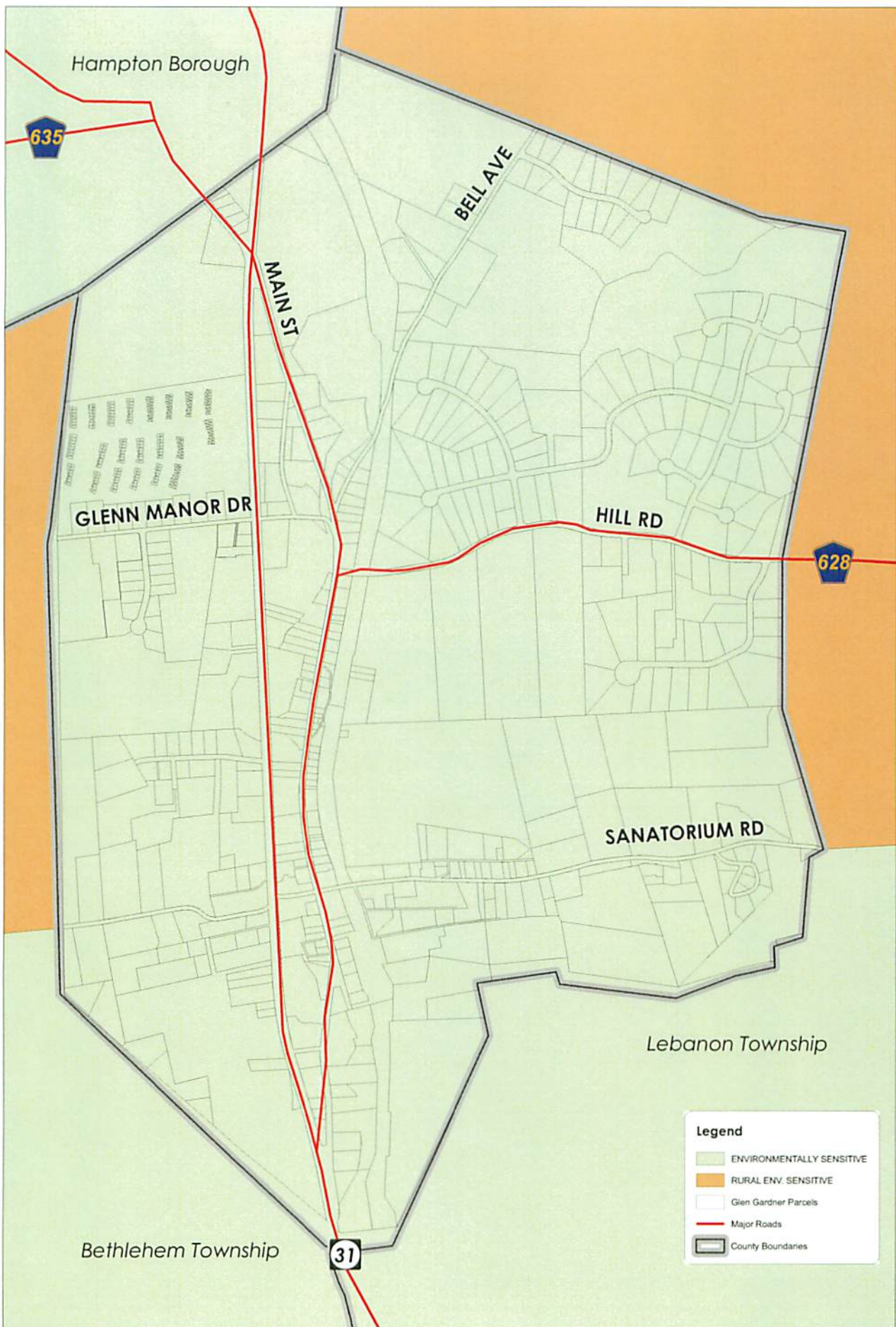


GLEN GARDNER

updated: JULY 20, 2009

Preserved Lands Updated by Group Melvin Design



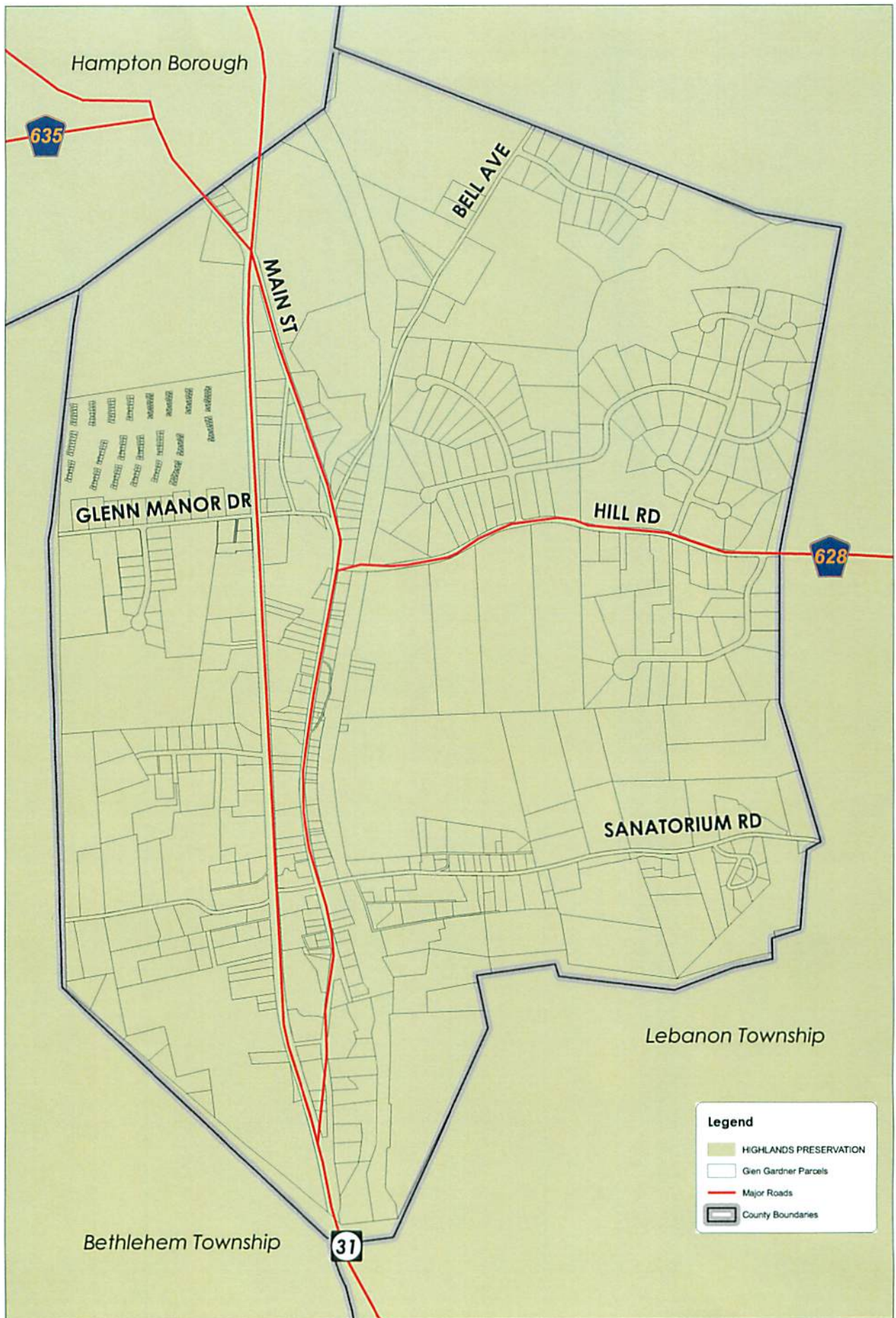


GLEN GARDNER

2001 State Plan Policy Map

updated JULY 20, 2009





Legend

- HIGHLANDS PRESERVATION
- Gen Gardner Parcels
- Major Roads
- County Boundaries

GLEN GARDNER

updated: JULY 20, 2009

2009 Draft Final State Plan Policy Map

