

Jocelyn van den Akker
GIS Specialist
Jocelyn.VanDenAkker@highlands.nj.gov

Izzy Castiglioni
Natural Resource Specialist
Izzy.Castiglioni@highlands.nj.gov

www.HighlandsERI.com

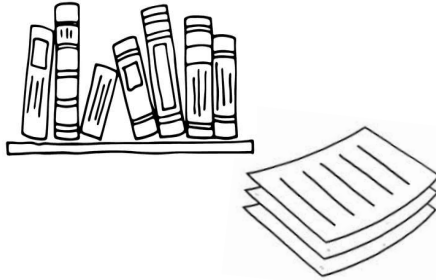



New Jersey Highlands Council
(908) 879-6737
www.nj.gov/njhighlands

What is an ERI?

- ERIs are valuable tools for municipalities and counties.
- Sometimes called Natural Resources Inventory
- Typically contain.....
 - Catalog of *all* environmental resources, natural *and* built, including historic, cultural, scenic, infrastructure
 - Descriptions, data, and maps
- Used for master planning, land use ordinance development, project review, and more.

Why an *interactive* ERI?

	Current Model	Interactive ERI
		
Data	Point-in-time data; static.	Real-time data; always current.
ERI Development	Labor Intensive. Author must pull data from multiple sources. Often outsourced to consultant.	Streamlined. All data sources in one place.
ERI Format	Printed documents. Quickly outdated.	Interactive/dynamic or printed. Online, on-demand.
Applicability	Municipality only.	Scalable: region, county, municipality, parcel, project, etc.
Investment & Return on Investment	Significant investment every 10 years for new ERI that quickly becomes outdated.	Dramatically lower cost with the ability to produce more accurate documents more frequently.

Application Overview

FEATURES

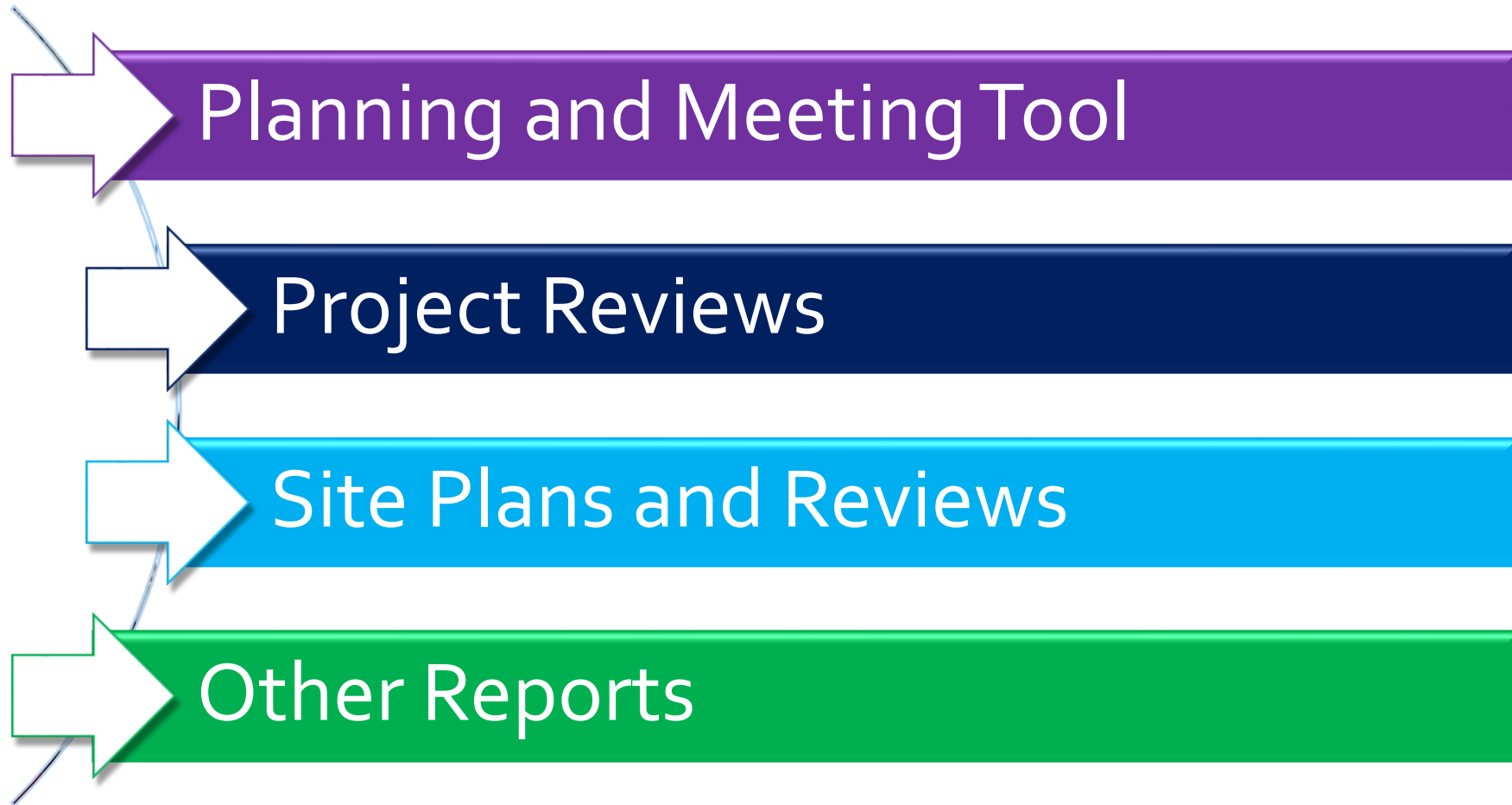
- Multiple Geographic Levels
- Custom and Pre-Defined Maps
- Report and Map Export Function
- Interactive Map Viewer
- Live Data Links

DATA SOURCES

- Highlands Council
- Other NJ State Agencies (NJDEP, DOT, State Planning Commission, etc.)
- Federal Government (NRCS, FEMA, etc.)

Beyond ERIs

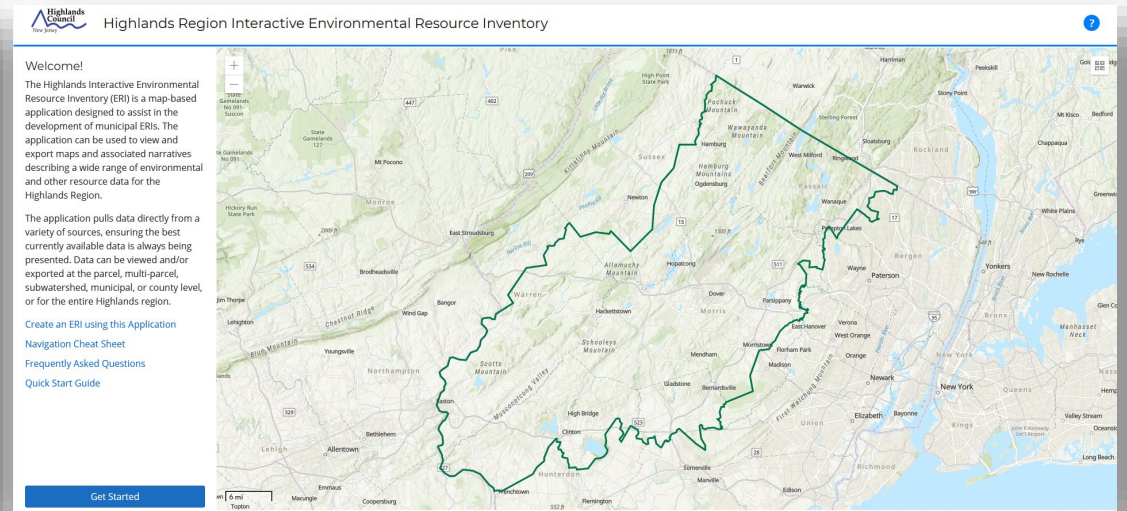
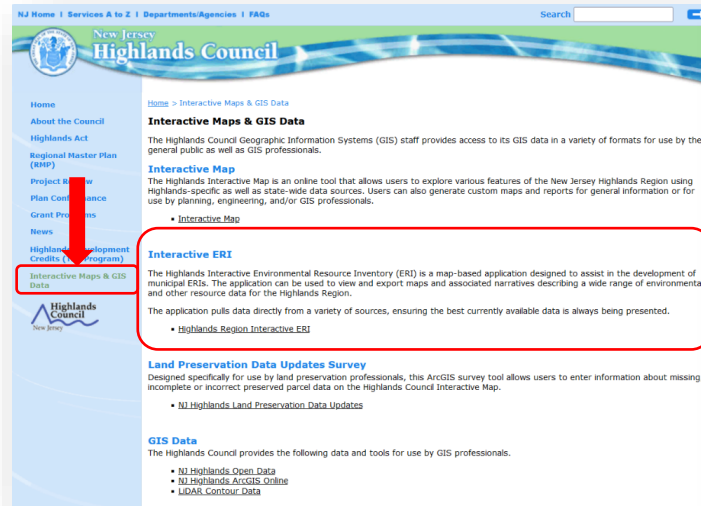
The Highlands Interactive ERI tool can also be used for...



2 ways to access...

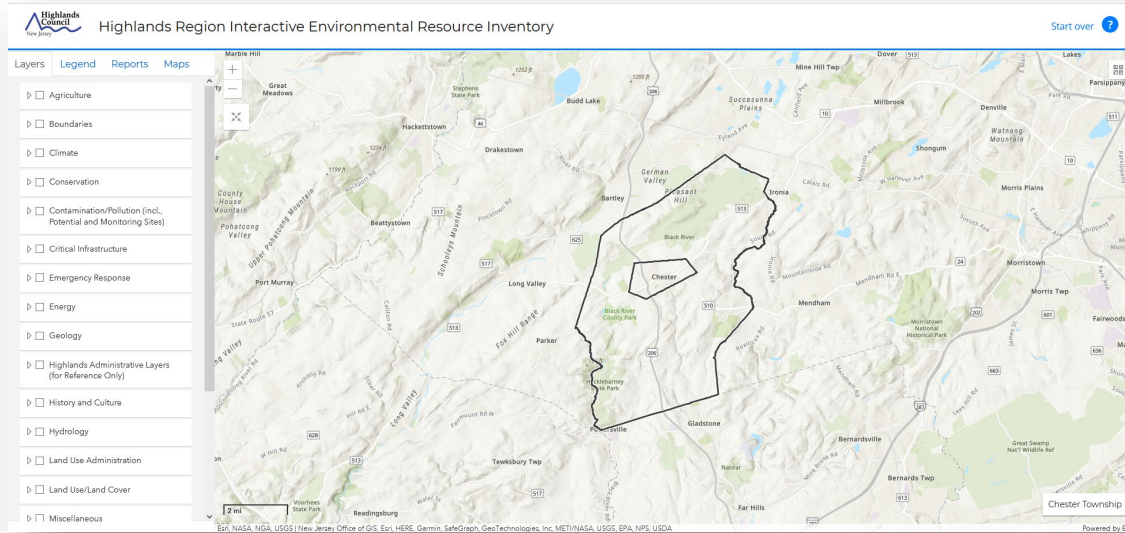
1

Enter via
Highlands
Council
website for
full region
view.



2

Each Highlands municipality
will get a custom link to zoom
right in and get to work!



www.highlandsERI.com ...if you want to follow along

DEMO 1

General Interest

How to get around

DEMO 2

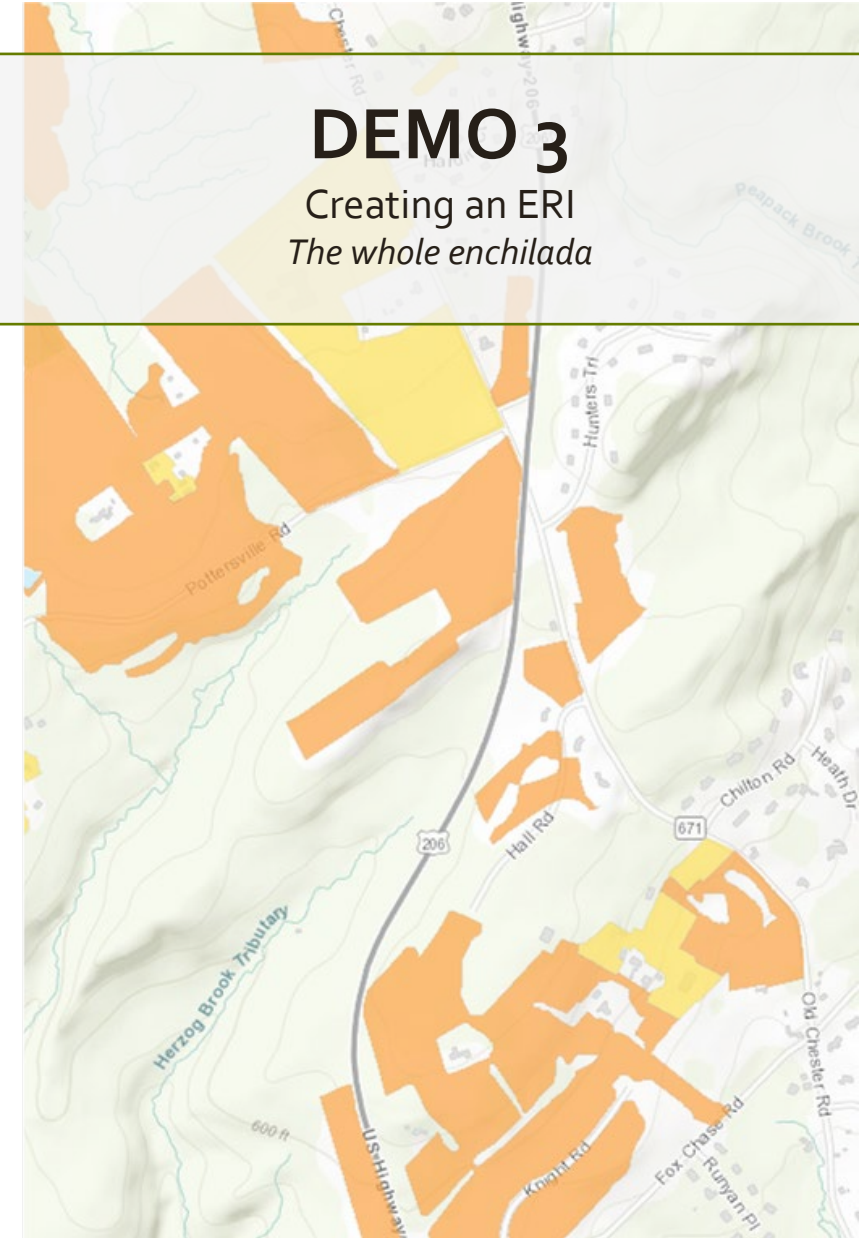
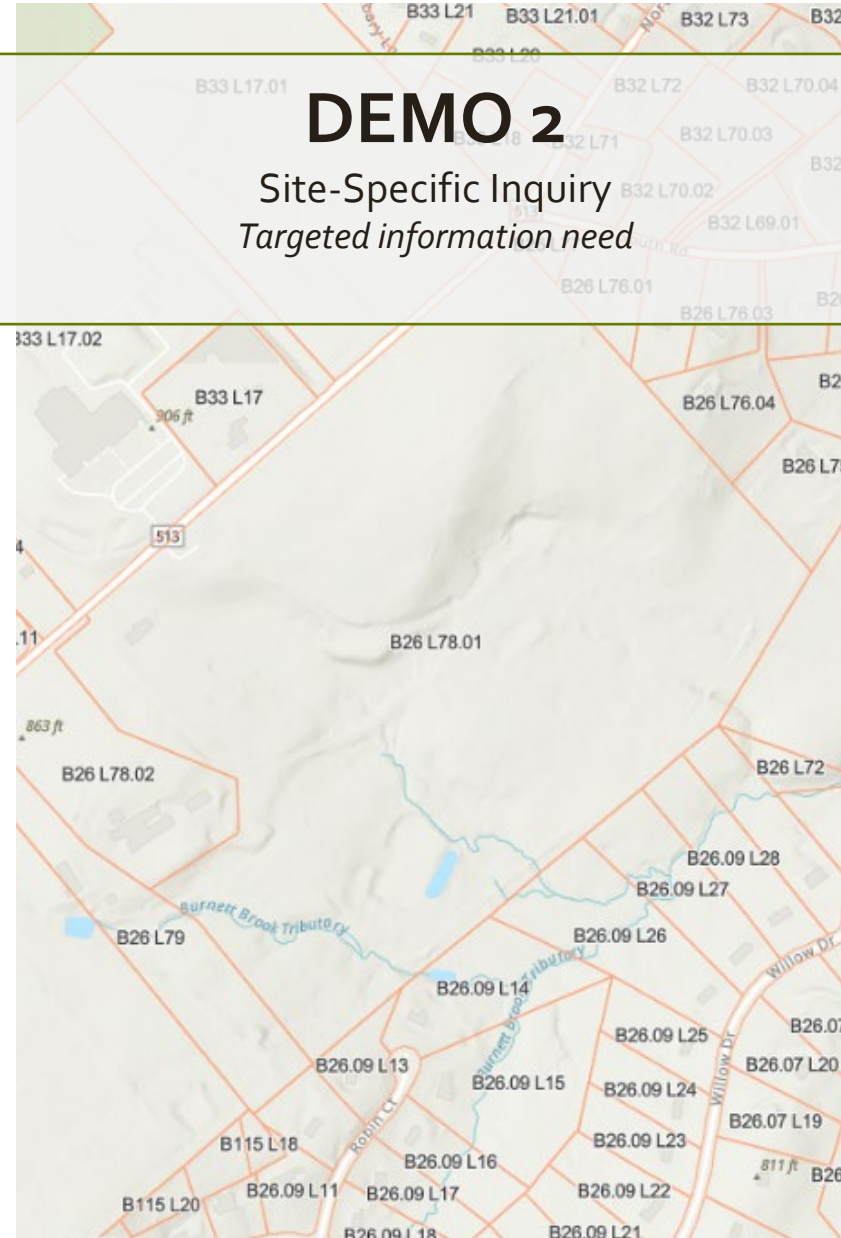
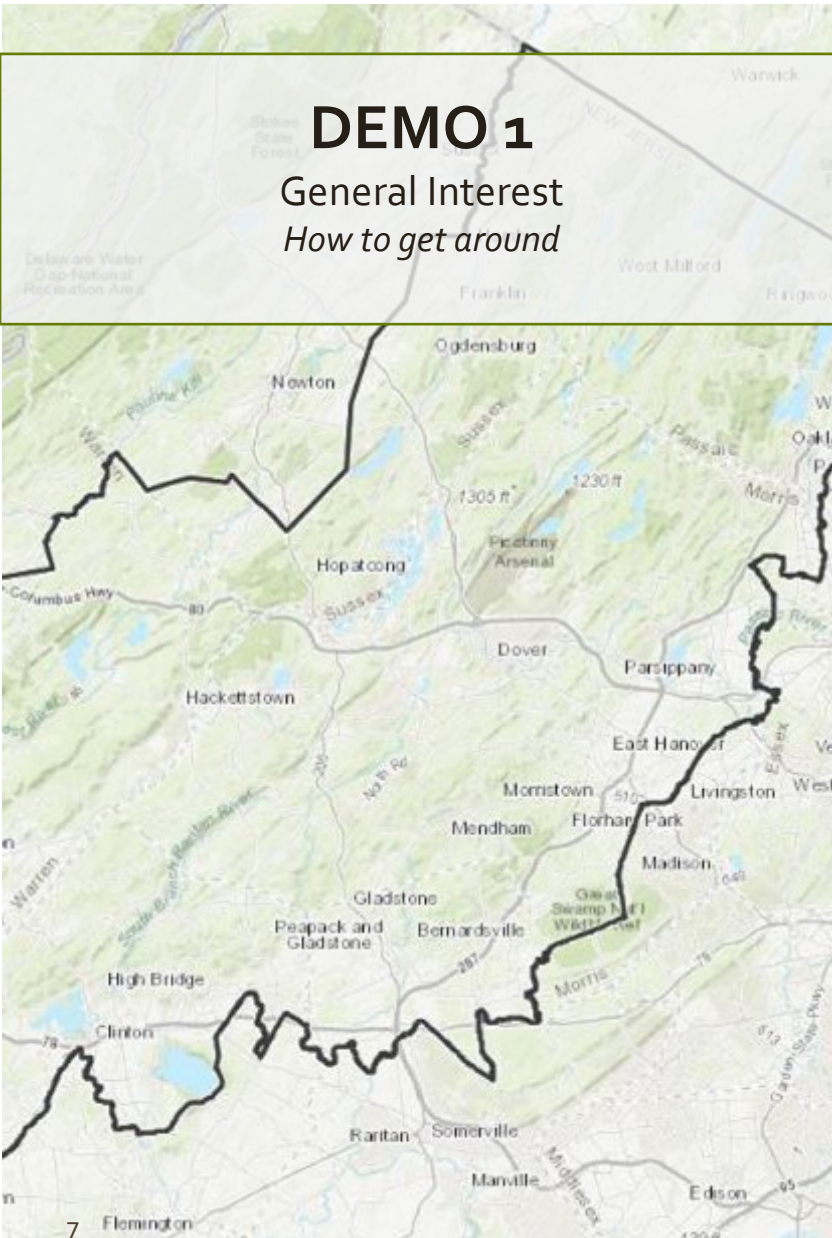
Site-Specific Inquiry

Targeted information need

DEMO 3

Creating an ERI

The whole enchilada



A map of the New Jersey Highlands region, outlined in green. The map shows various towns, mountains, and water bodies. Key locations include Pochuck Mountain, Wawayanda Mountain, Bearfort Mountain, Kittatinny Mountain, and Schooleys Mountain. Major roads like I-95, I-207, and I-27 are visible. The map also shows the Delaware River and the Hudson River.

Jocelyn van den Akker
GIS Specialist
Jocelyn.VanDenAkker@highlands.nj.gov

Izzy Castiglioni
Natural Resource Specialist
Izzy.Castiglioni@highlands.nj.gov

www.HighlandsERI.com

New Jersey Highlands Council
(908) 879-6737
www.nj.gov/njhighlands