

# Exhibit A: Borough Highlands Area



## Regional Master Plan Overlay Zone Designation

### Zone

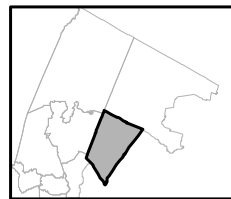
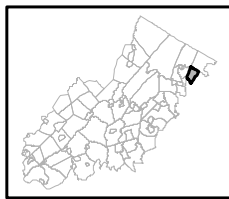
- Protection
- Conservation
- Existing Community

### Sub-Zone

- Existing Community Environmentally Constrained
- Conservation Environmentally Constrained
- Lake Community
- Wildlife Management

- Lakes Greater Than 10 acres
- Preservation Area
- Municipal Boundaries

## Oakland Borough



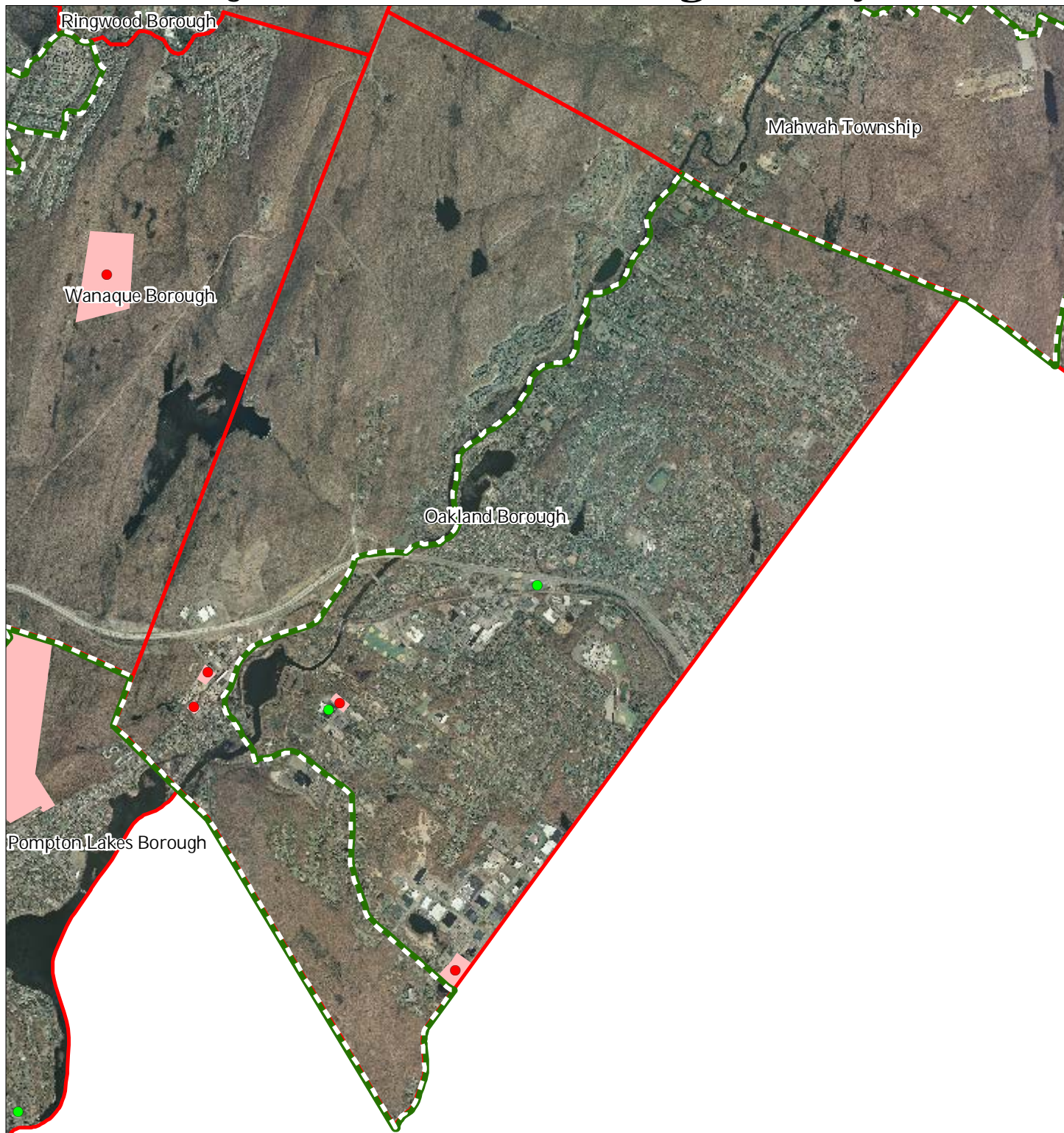
1 inch = 0.583 miles



March 2015



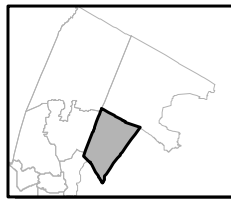
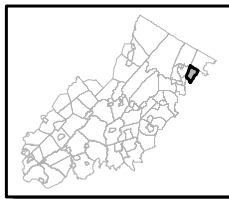
## Exhibit C: Highlands Contaminated Site Inventory



Highlands Contaminated Site Inventory

Oakland Borough

- *Tier 1 Sites*
- *Tier 1 Sites (Polygons)*
- *Tier 2 Sites*
- ▭ Preservation Area
- ▭ Municipal Boundaries



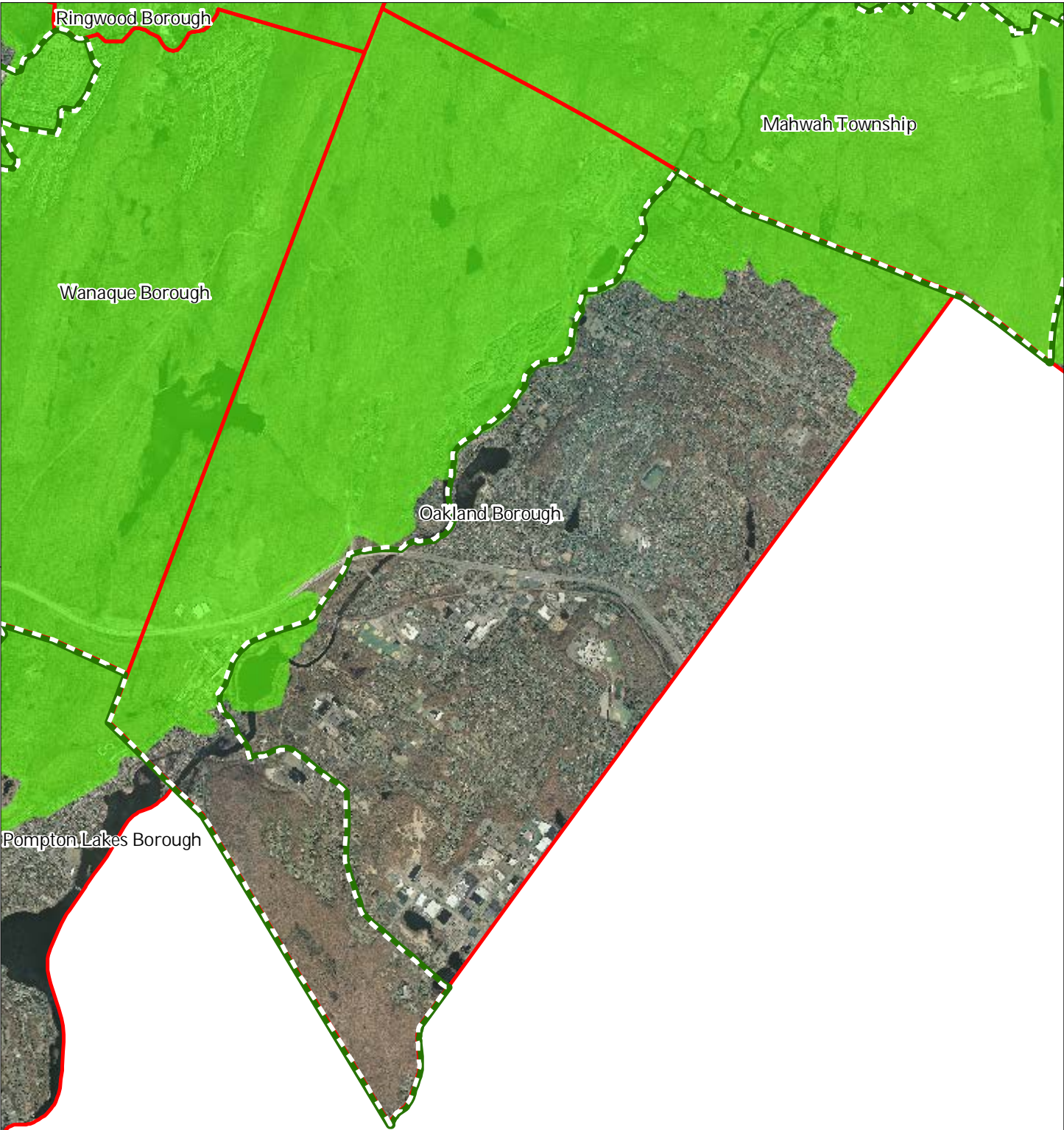
1 inch = 0.583 miles






March 2015

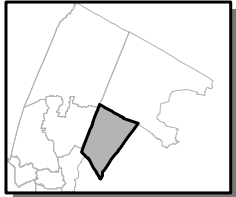
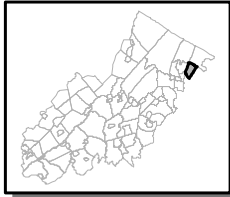


Exhibit E: Forest Resource Area



-  Forest Resource Area
-  Preservation Area
-  Municipal Boundaries

Oakland Borough

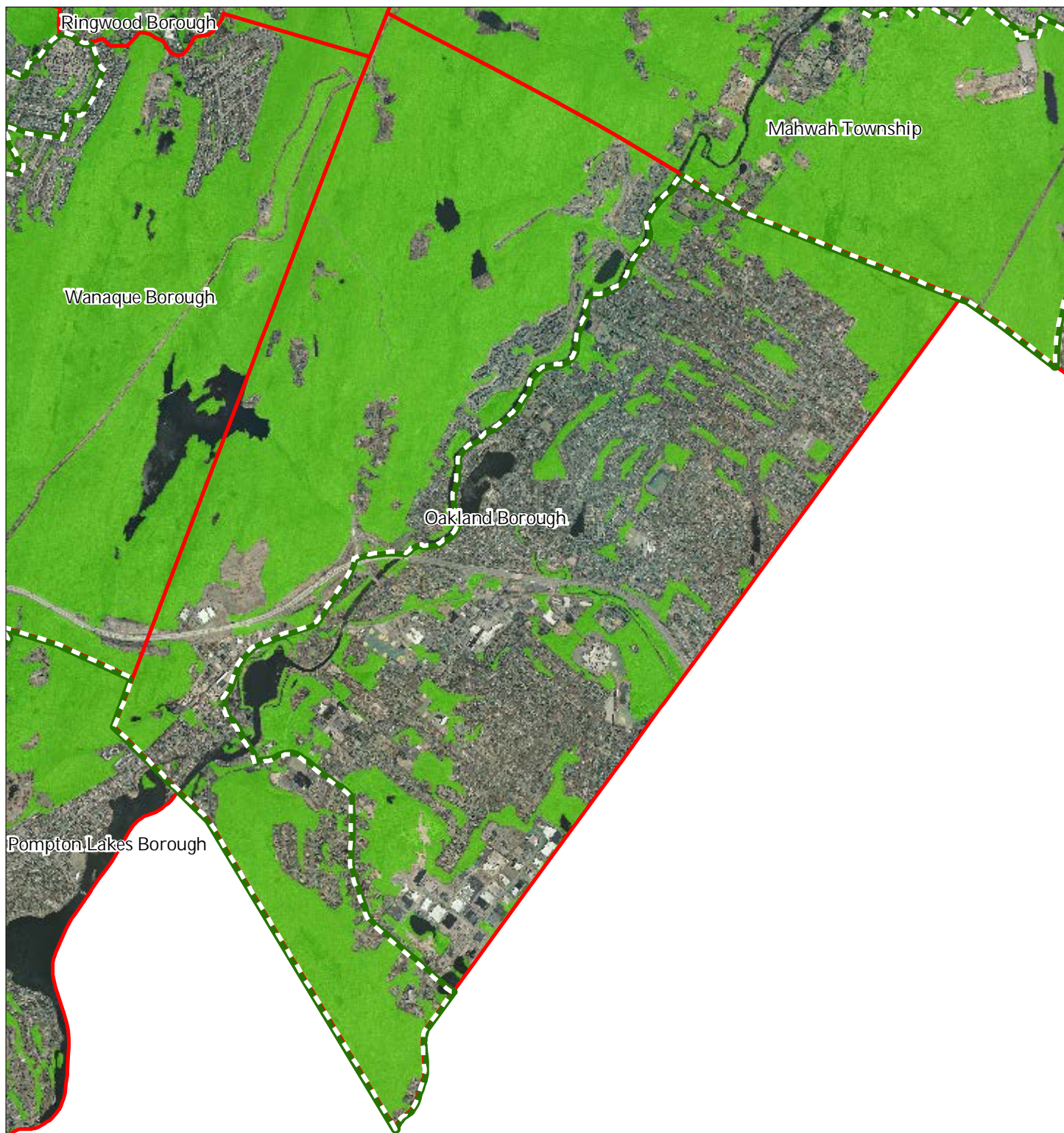





1 inch = 0.583 miles



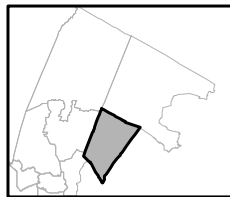
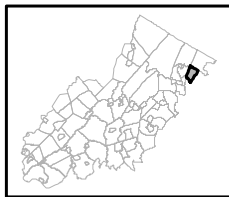


## Exhibit F: Total Forest Area



-  Forested Areas
-  Preservation Area
-  Municipal Boundaries

Oakland Borough



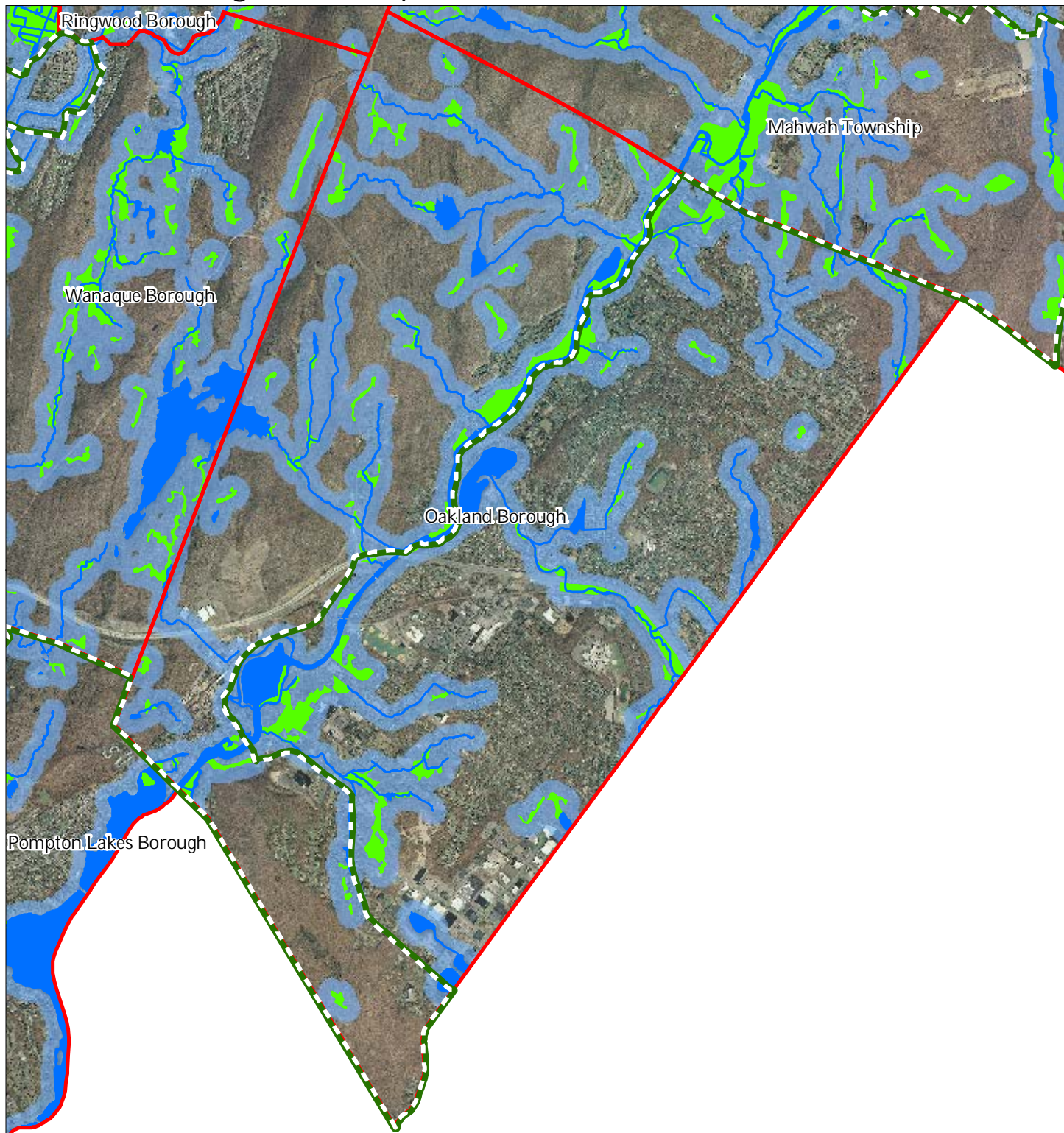
1 inch = 0.583 miles



March 2015

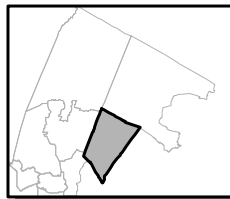
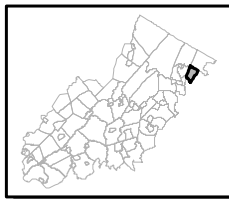


## Exhibit H: Highlands Open Waters



-  Highlands Open Water Buffers (300ft)
-  Streams
-  Wetlands
-  Lakes & Ponds
-  Preservation Area
-  Municipal Boundaries

### Oakland Borough



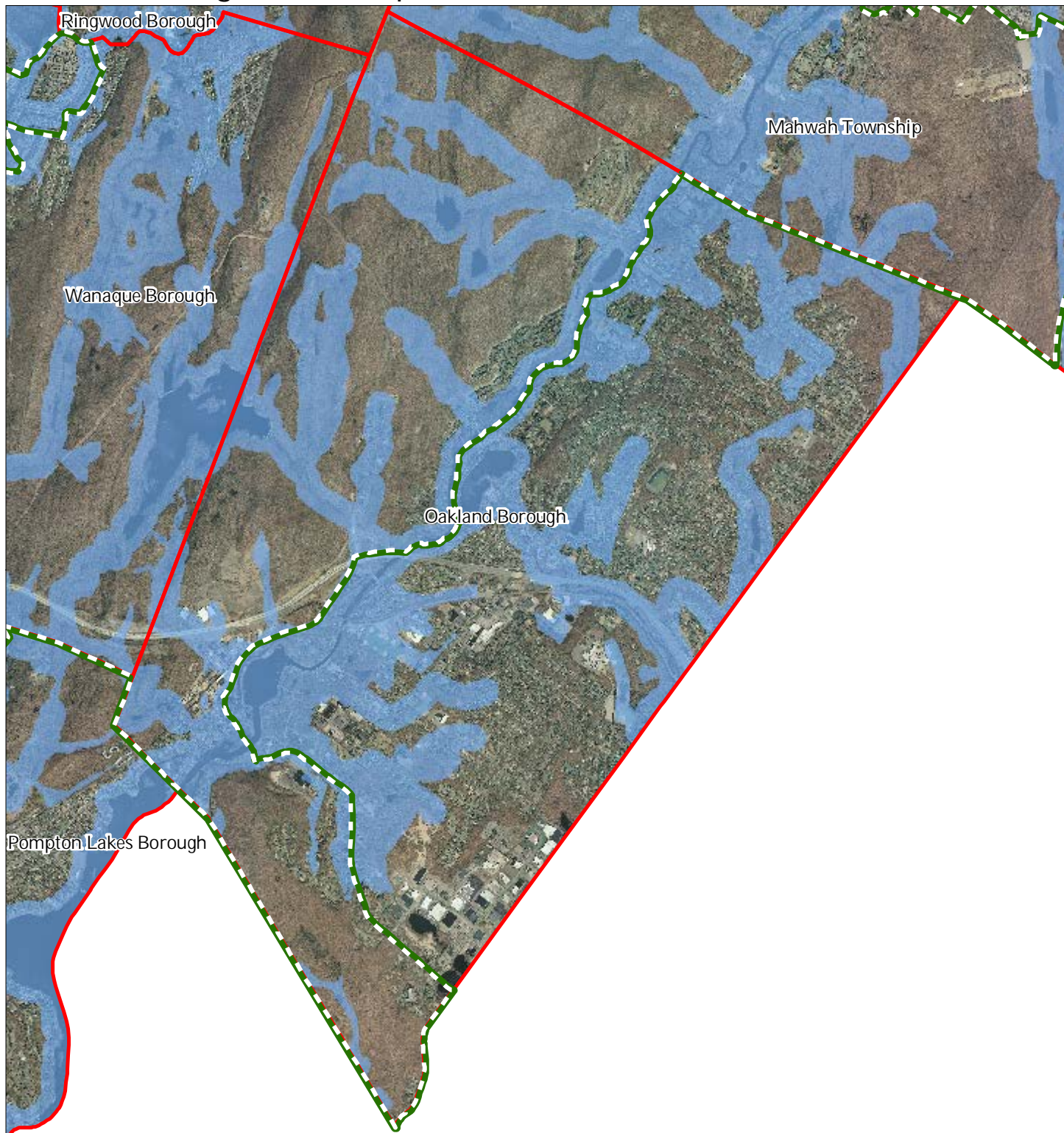
1 inch = 0.583 miles

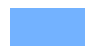




March 2015

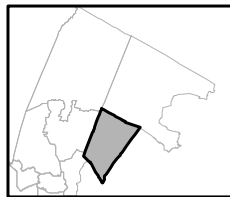
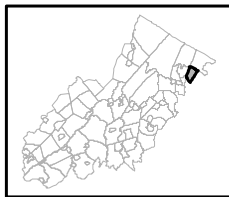


# Exhibit I: Highlands Riparian Areas



-  Riparian Area
-  Preservation Area
-  Municipal Boundaries

Oakland Borough

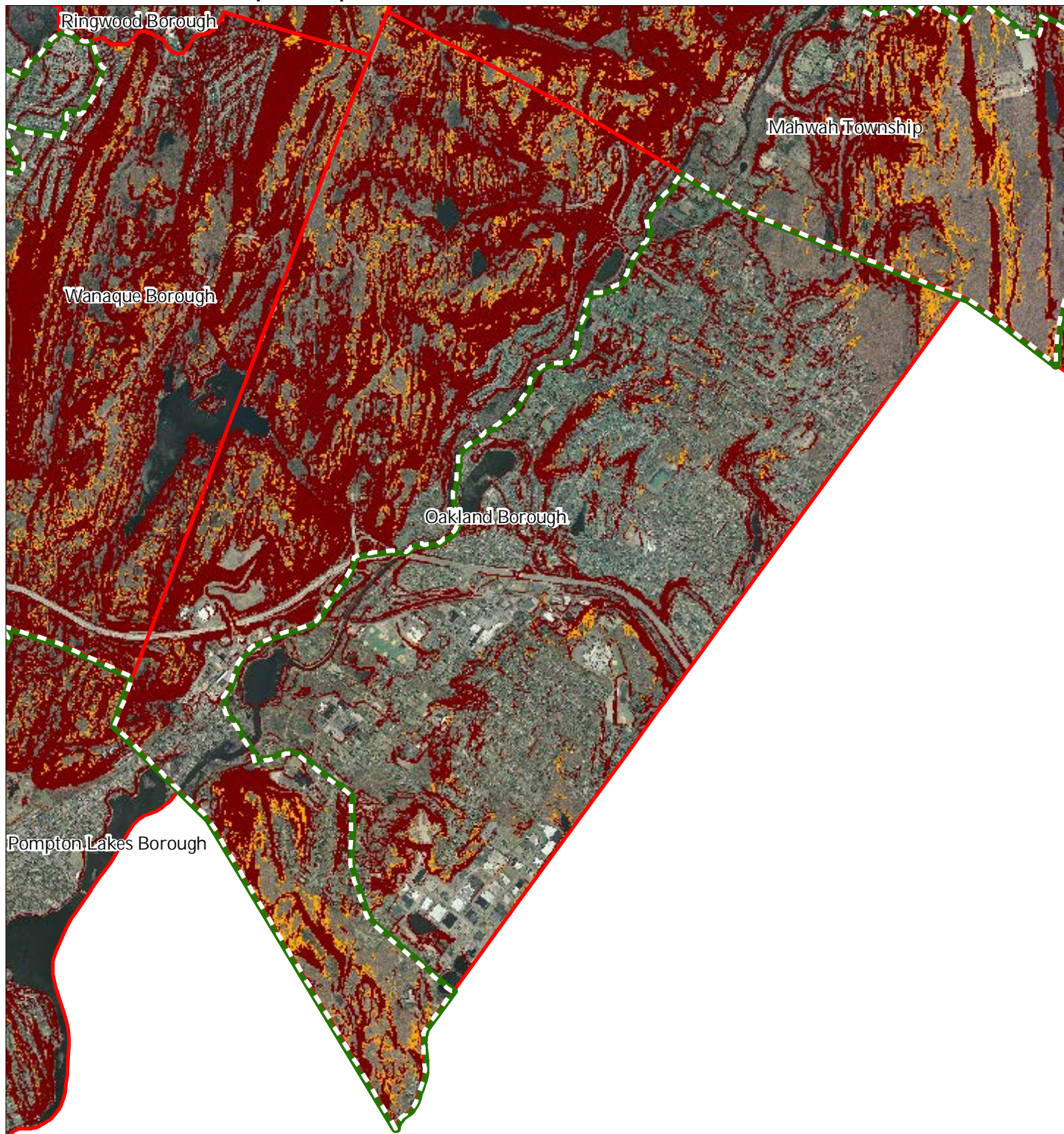


1 inch = 0.583 miles





## Exhibit L: Steep Slope Protection Areas



### Steep Slopes

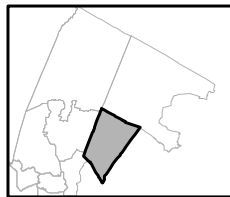
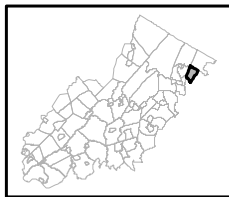
 Moderate

 Severe

 Preservation Area

 Municipal Boundaries

### Oakland Borough



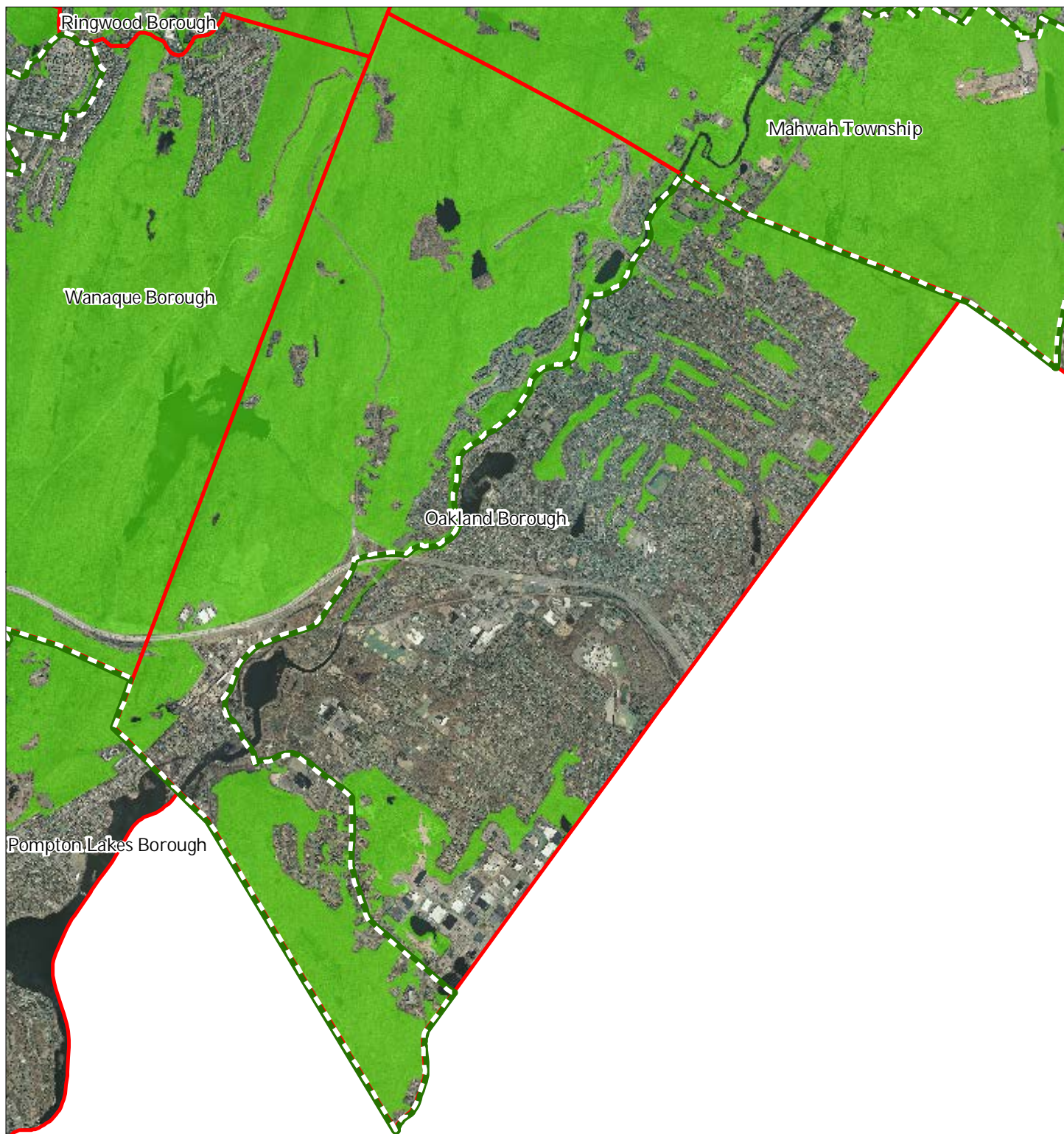
1 inch = 0.583 miles






March 2015

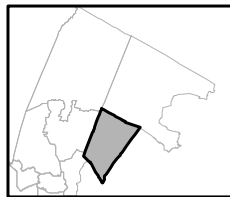
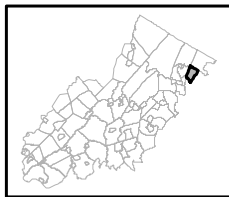


## Exhibit M: Critical Wildlife Habitat



-  Critical Wildlife Habitat
-  Preservation Area
-  Municipal Boundaries

Oakland Borough



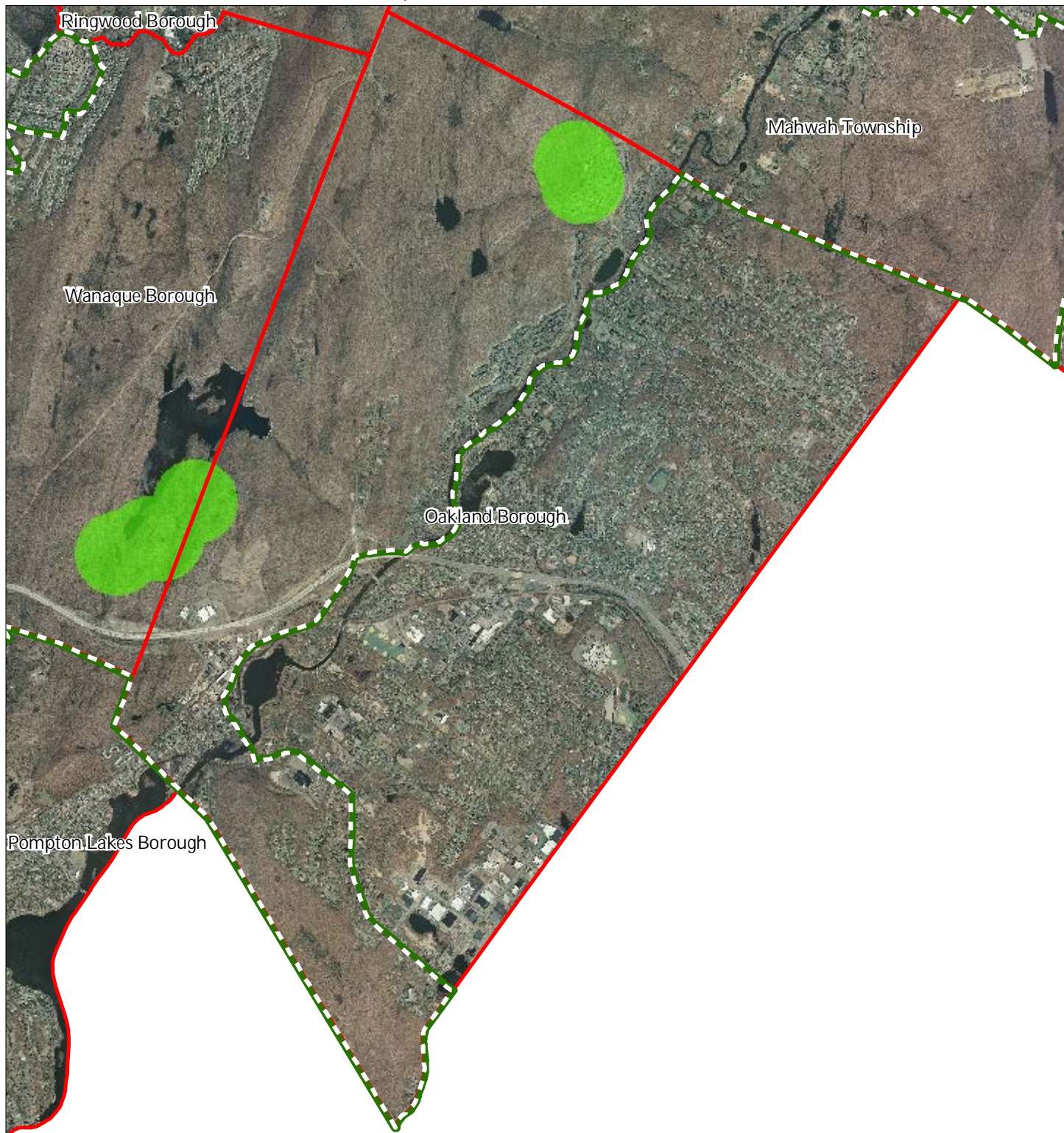
1 inch = 0.583 miles






March 2015

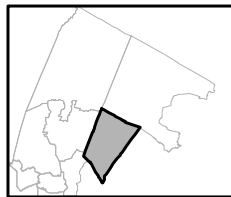
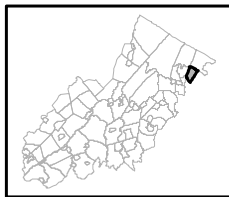


## Exhibit O: Vernal Pools, **Vernal Pool Buffers**



-  Vernal Pools + 1000ft Buffer
-  Preservation Area
-  Municipal Boundaries

Oakland Borough



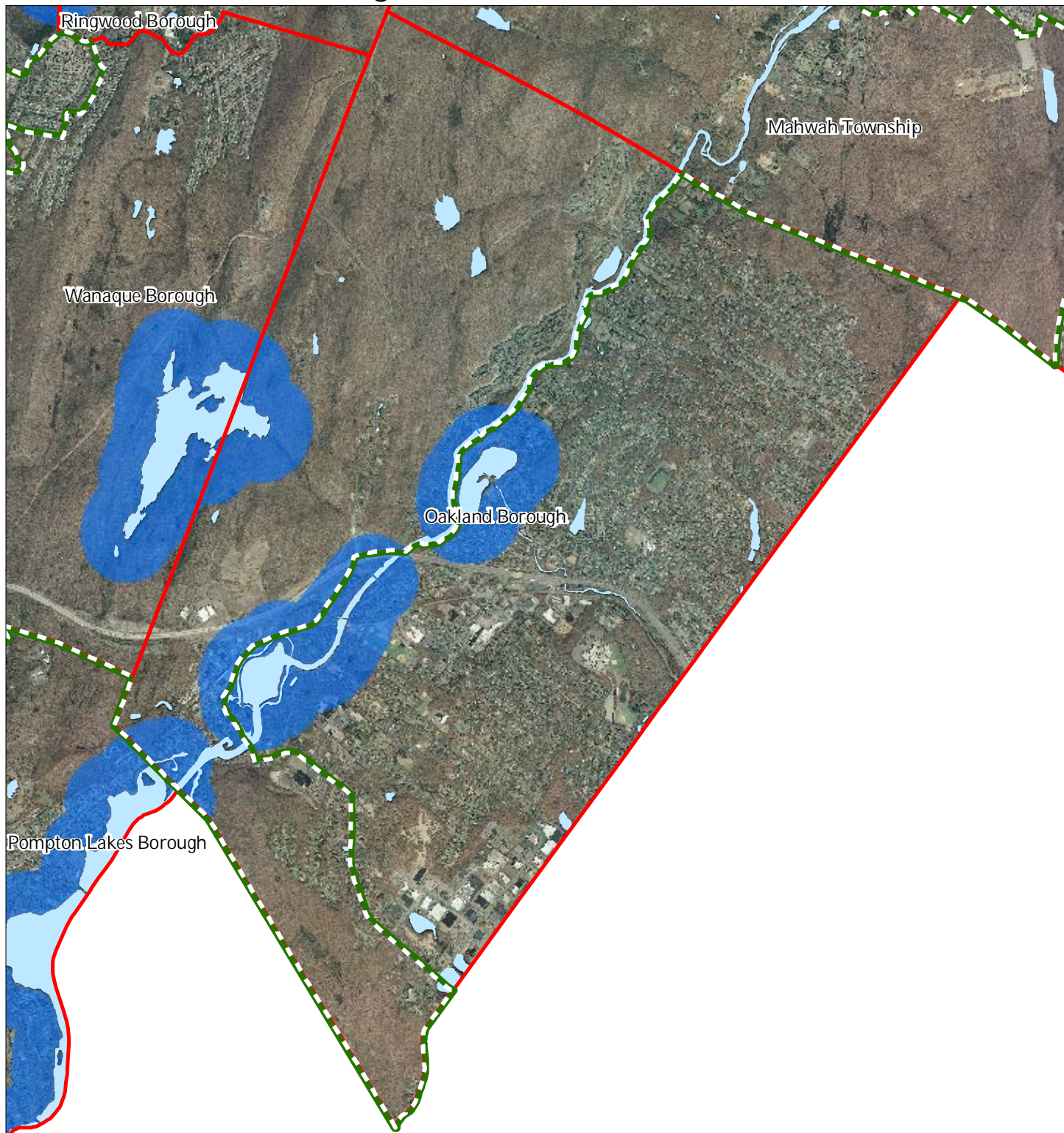
1 inch = 0.583 miles

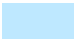





March 2015

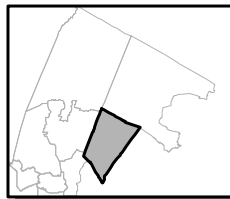
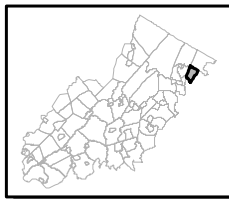


## Exhibit Q: Lake Management Area



-  Lakes & Ponds
-  Lake Management Area
-  Preservation Area
-  Municipal Boundaries

Oakland Borough



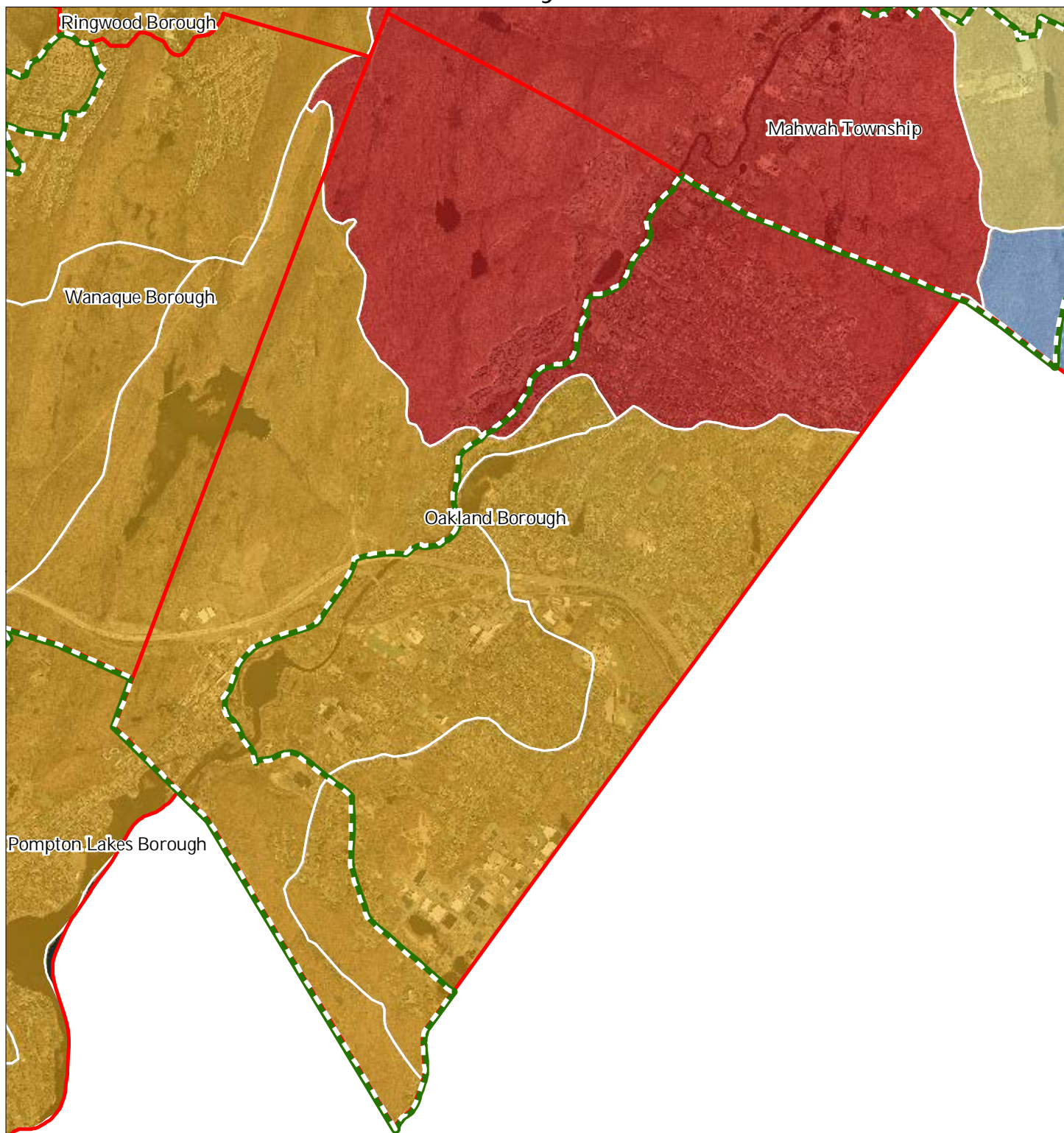
1 inch = 0.583 miles



March 2015

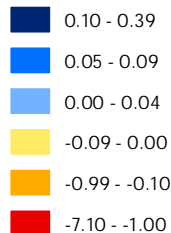




## Exhibit R: Net Water Availability



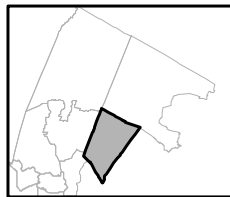
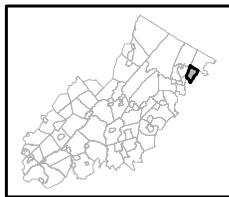
Net Water Availability By HUC14

Million Gallons Per Day (MGD)



 Preservation Area  
 Municipal Boundaries

### Oakland Borough



1 inch = 0.583 miles

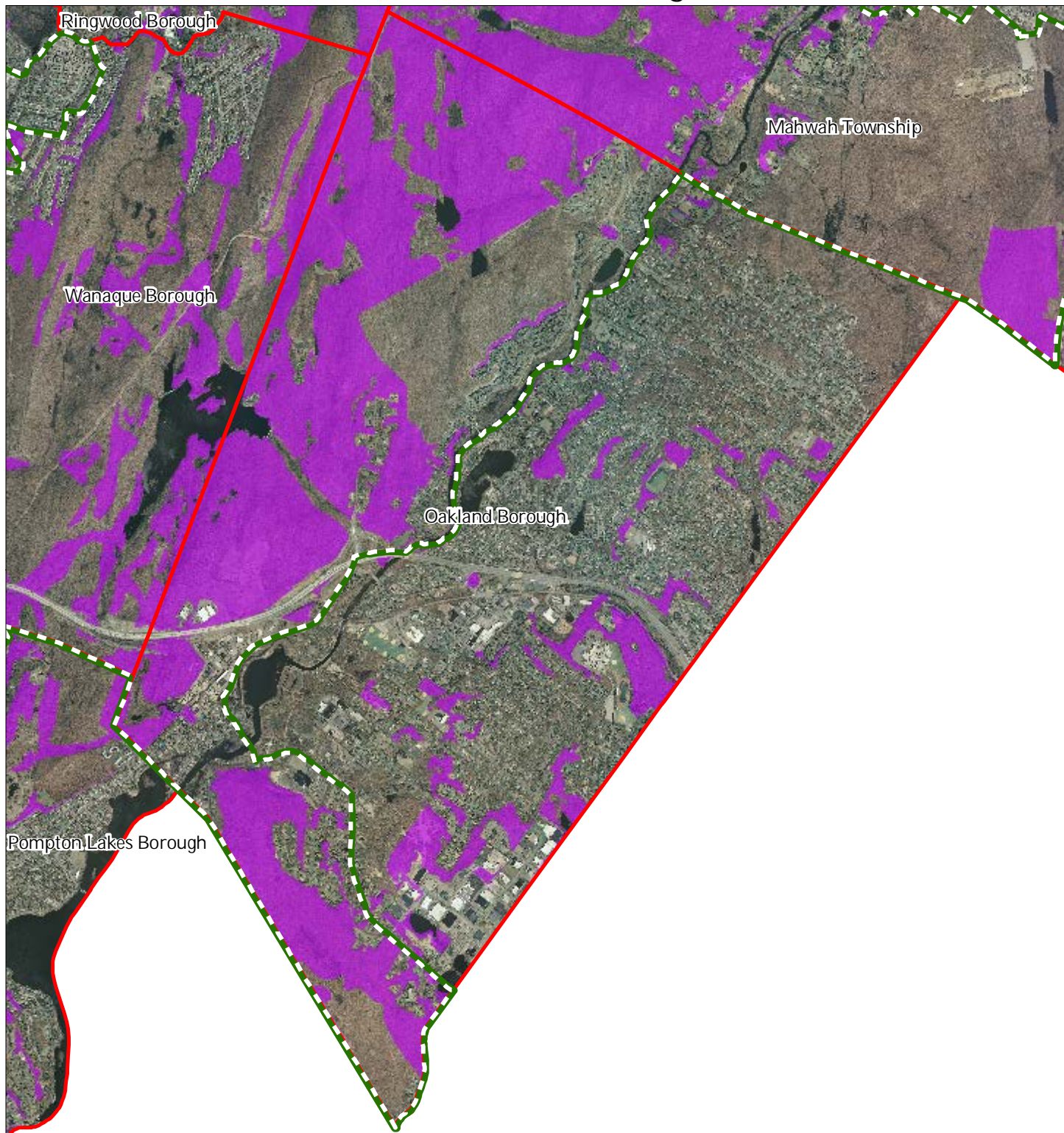
**Highlands Council**  
New Jersey






March 2015

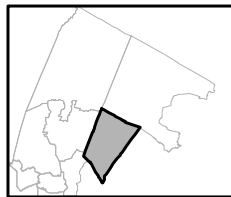
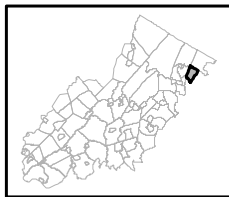


## Exhibit S: Prime Ground Water Recharge Areas



-  Prime Ground Water Recharge Areas
-  Preservation Area
-  Municipal Boundaries

Oakland Borough



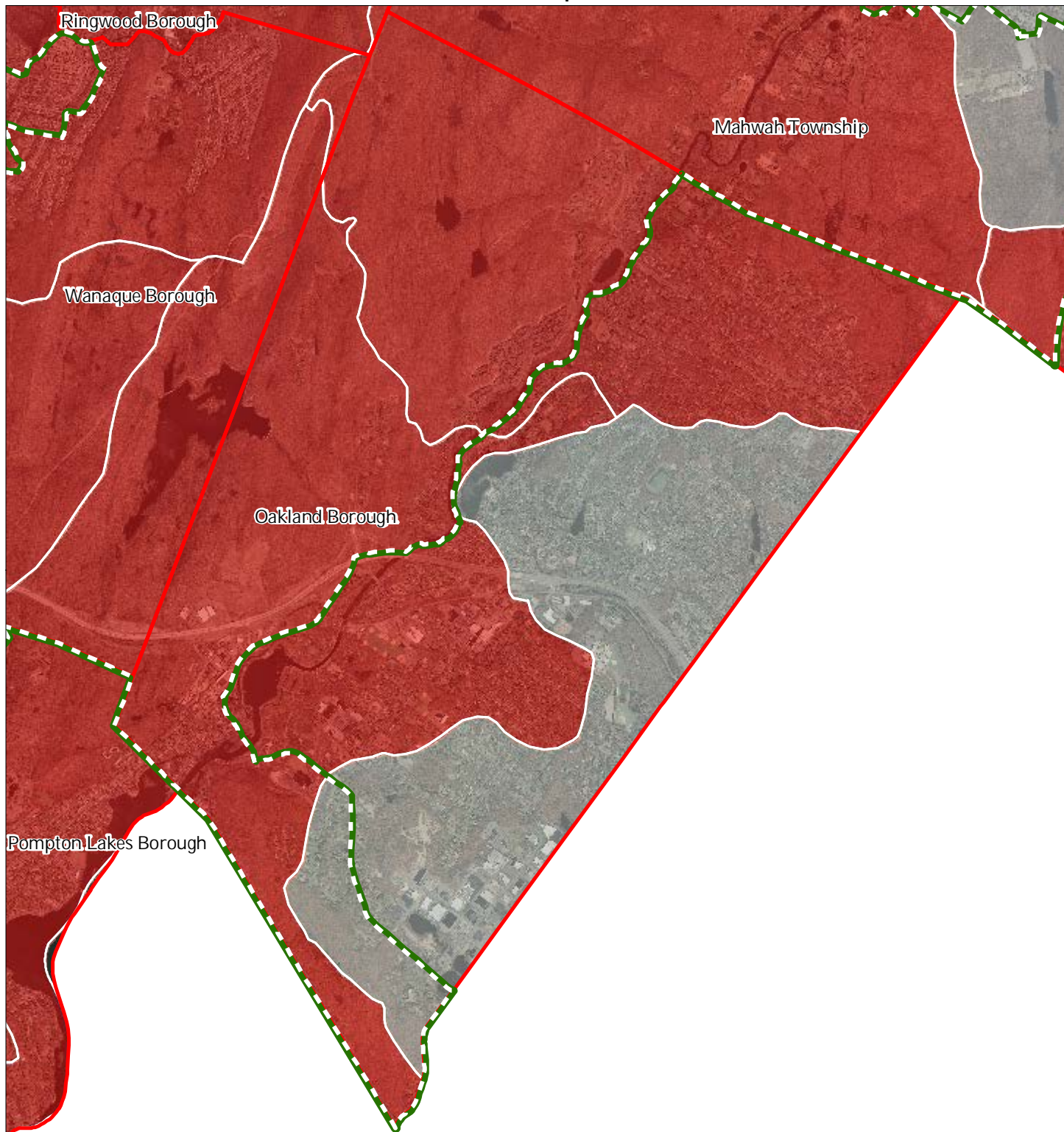
1 inch = 0.583 miles



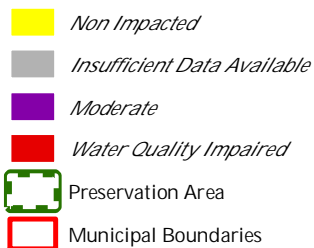
March 2015



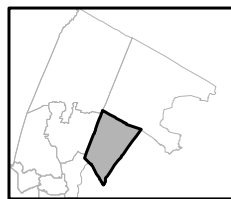
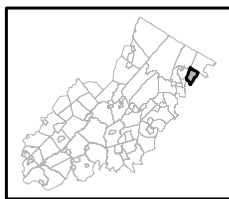
## Exhibit T: HUC 14s on NJDEP Impaired Waters List



Impaired Waters Overall Assessment by HUC14 Subwatershed



### Oakland Borough



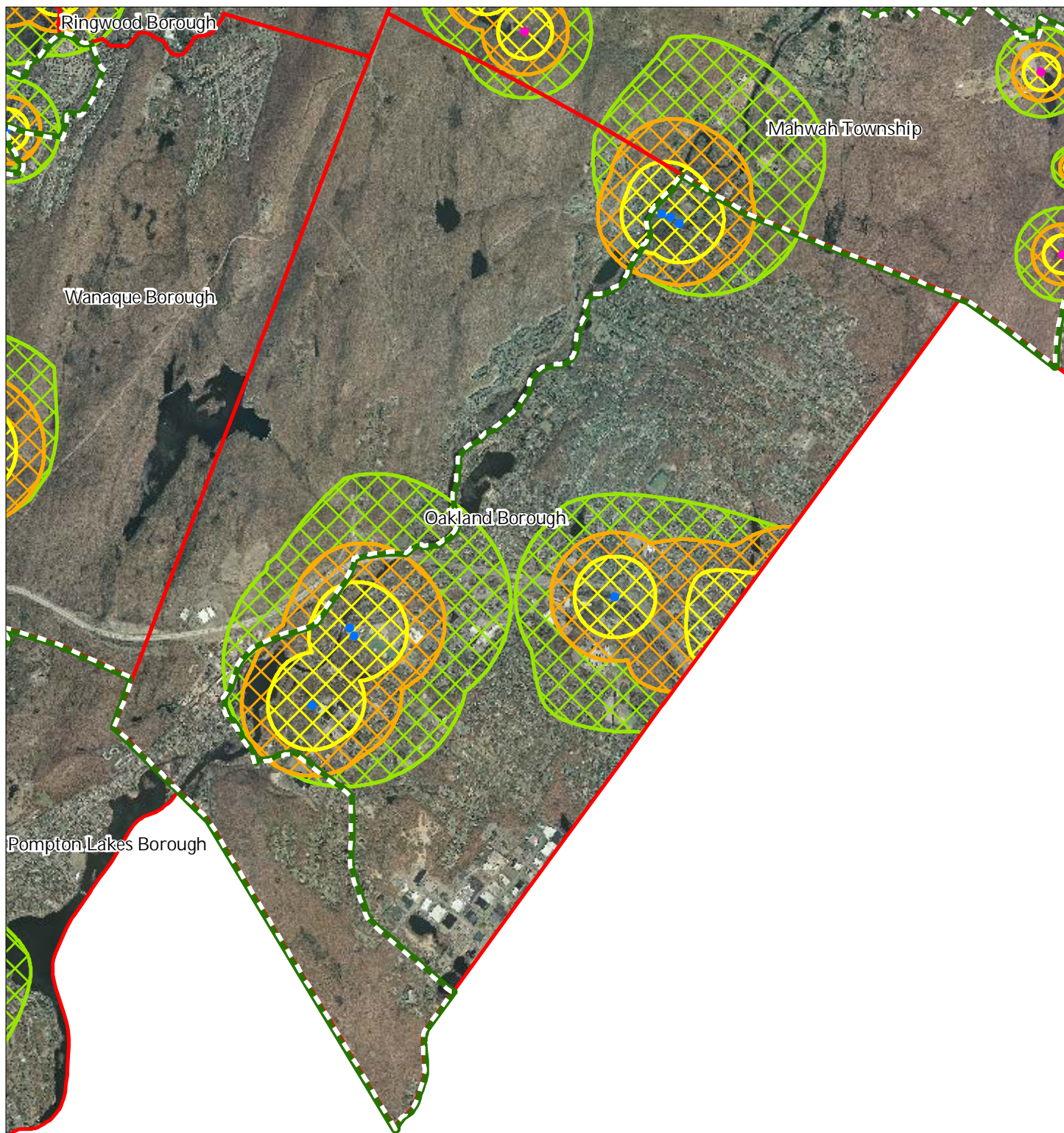
1 inch = 0.583 miles



March 2015



## Exhibit U: Wellhead Protection Areas



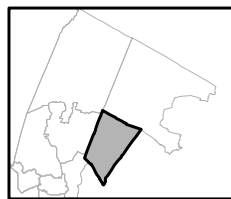
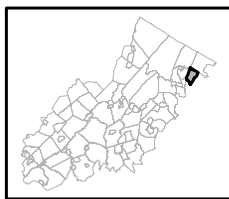
- Public Community Wells
- Public Non-Community Wells

### Wellhead Protection Areas

- 2-Year Tier
- 5-Year Tier
- 12-Year Tier

- Preservation Area
- Municipal Boundaries

## Oakland Borough



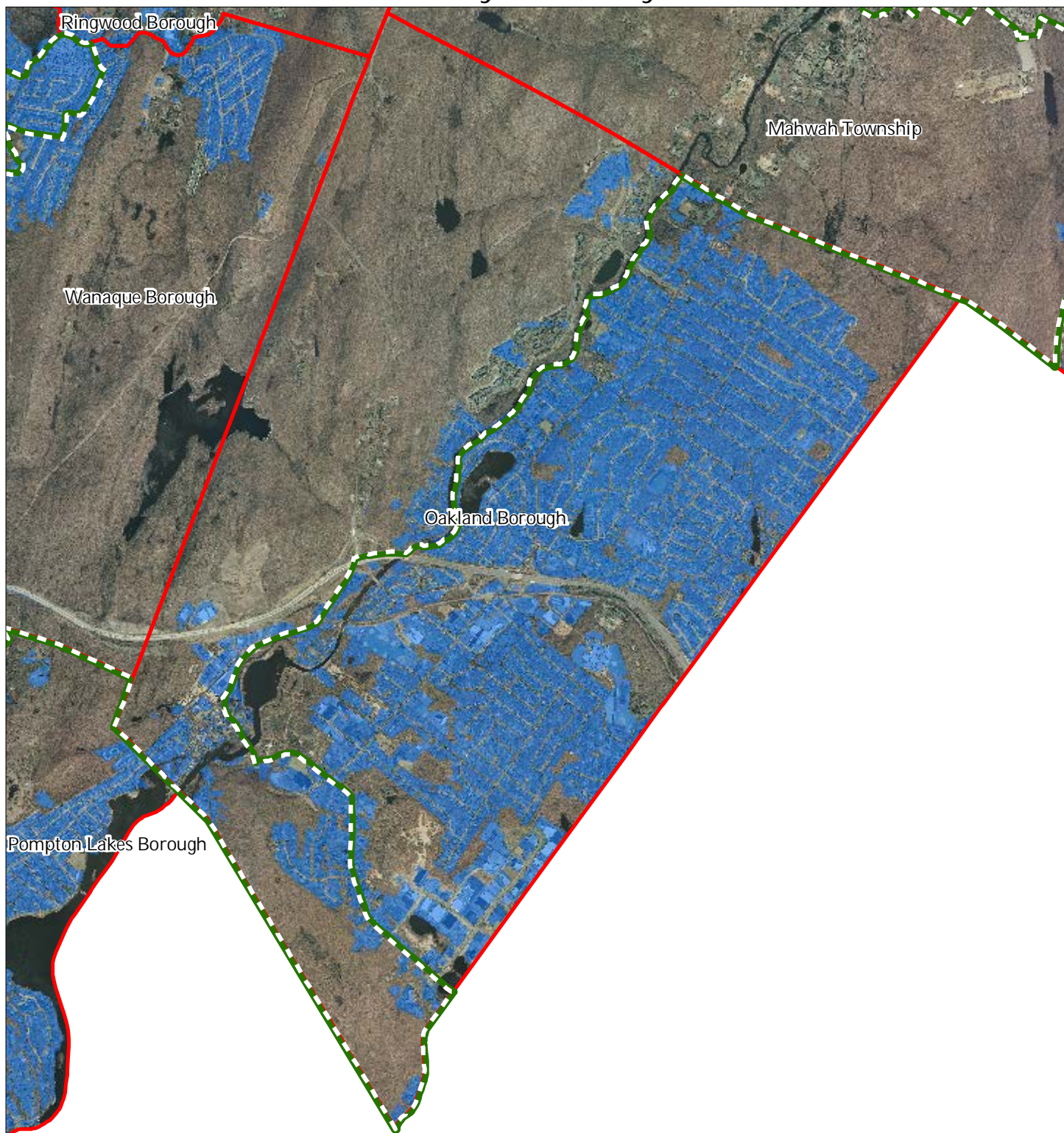
1 inch = 0.583 miles






March 2015

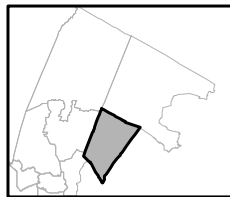
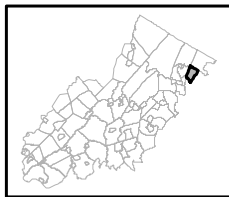


## Exhibit V: Public Community Water Systems



-  Public Community Water Systems
-  Preservation Area
-  Municipal Boundaries

Oakland Borough

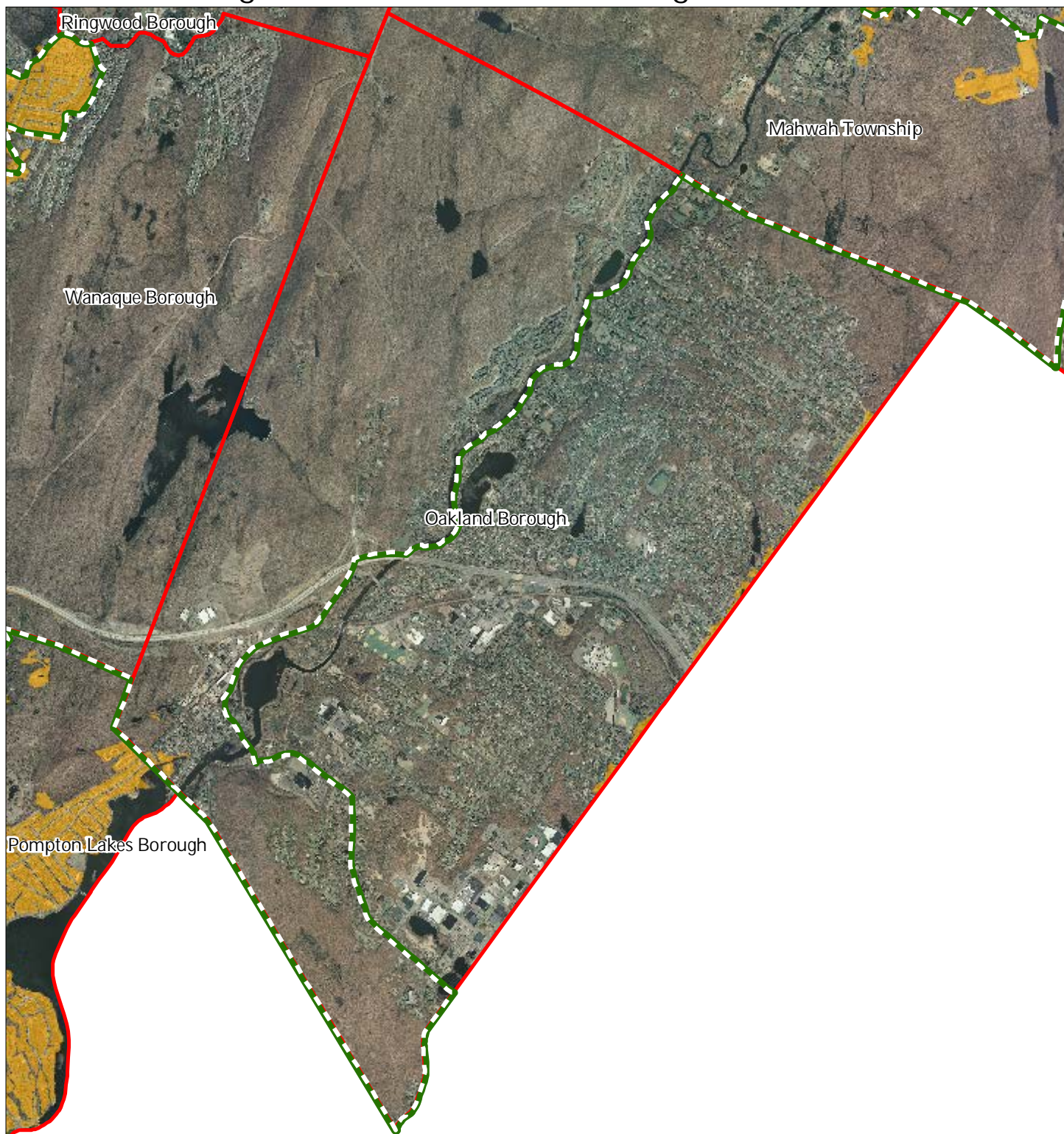


1 inch = 0.583 miles








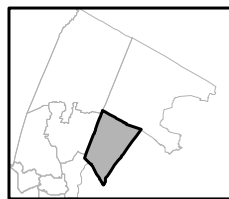
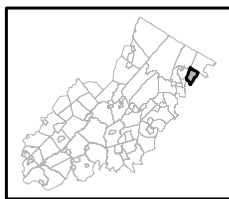
## Exhibit W: Highlands Domestic Sewerage Facilities



### Highlands Domestic Sewerage Facilities

-  Existing Area Served
-  Preservation Area
-  Municipal Boundaries

### Oakland Borough



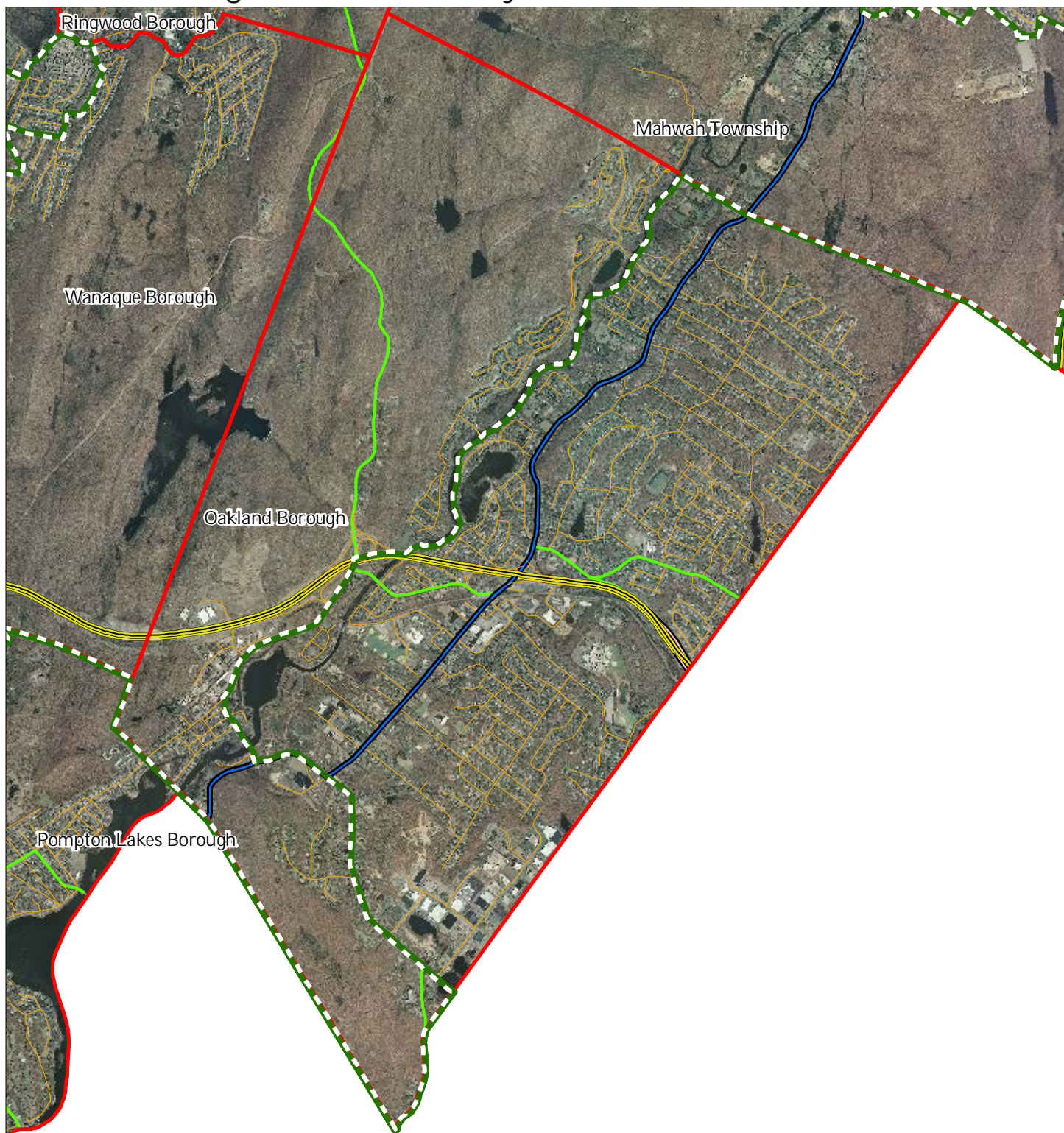
1 inch = 0.583 miles



March 2015



## Exhibit Y: Highlands Roadway Network



### Roadway Network

Interstate Highways

U.S. Routes

State Routes

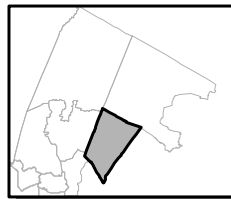
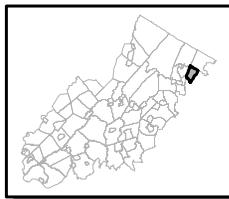
County Routes

Local Routes

Preservation Area

Municipal Boundaries

### Oakland Borough



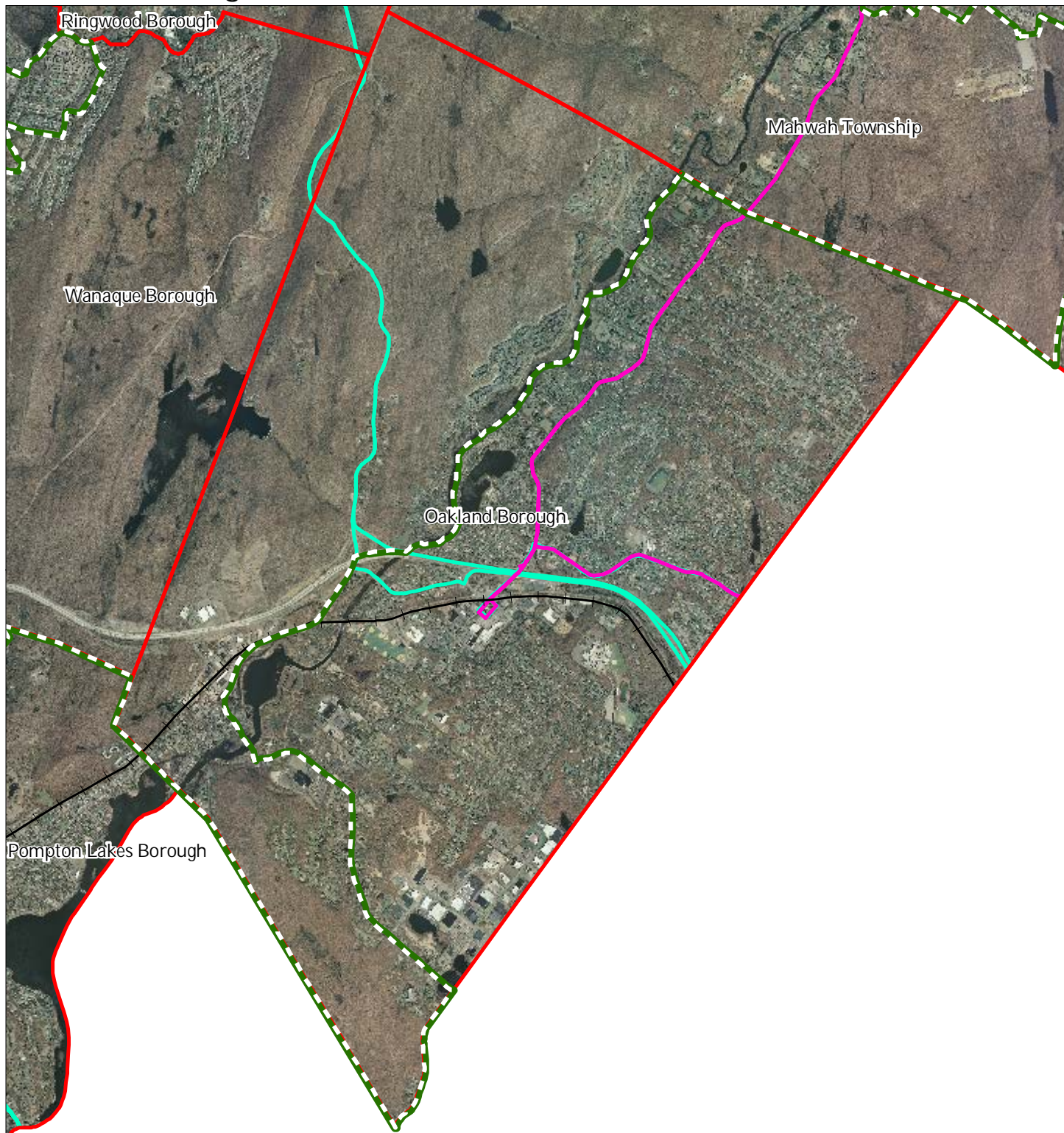
1 inch = 0.583 miles



March 2015



# Exhibit Z: Highlands Transit Network



## Rail Network

Boonton Line

Main Line & Bergen County Line

Morris and Essex Line

Raritan Valley Line

## Freight Rail Lines

Freight Rail Lines

Abandoned Freight Rail

Rail Stations

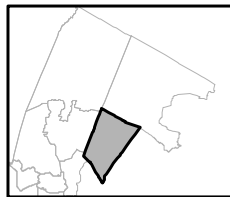
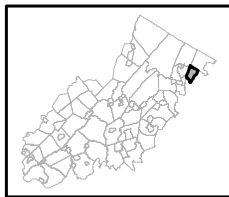
Park and Ride Sites

Private Bus Lines

NJ Transit Bus Lines

Airports

## Oakland Borough



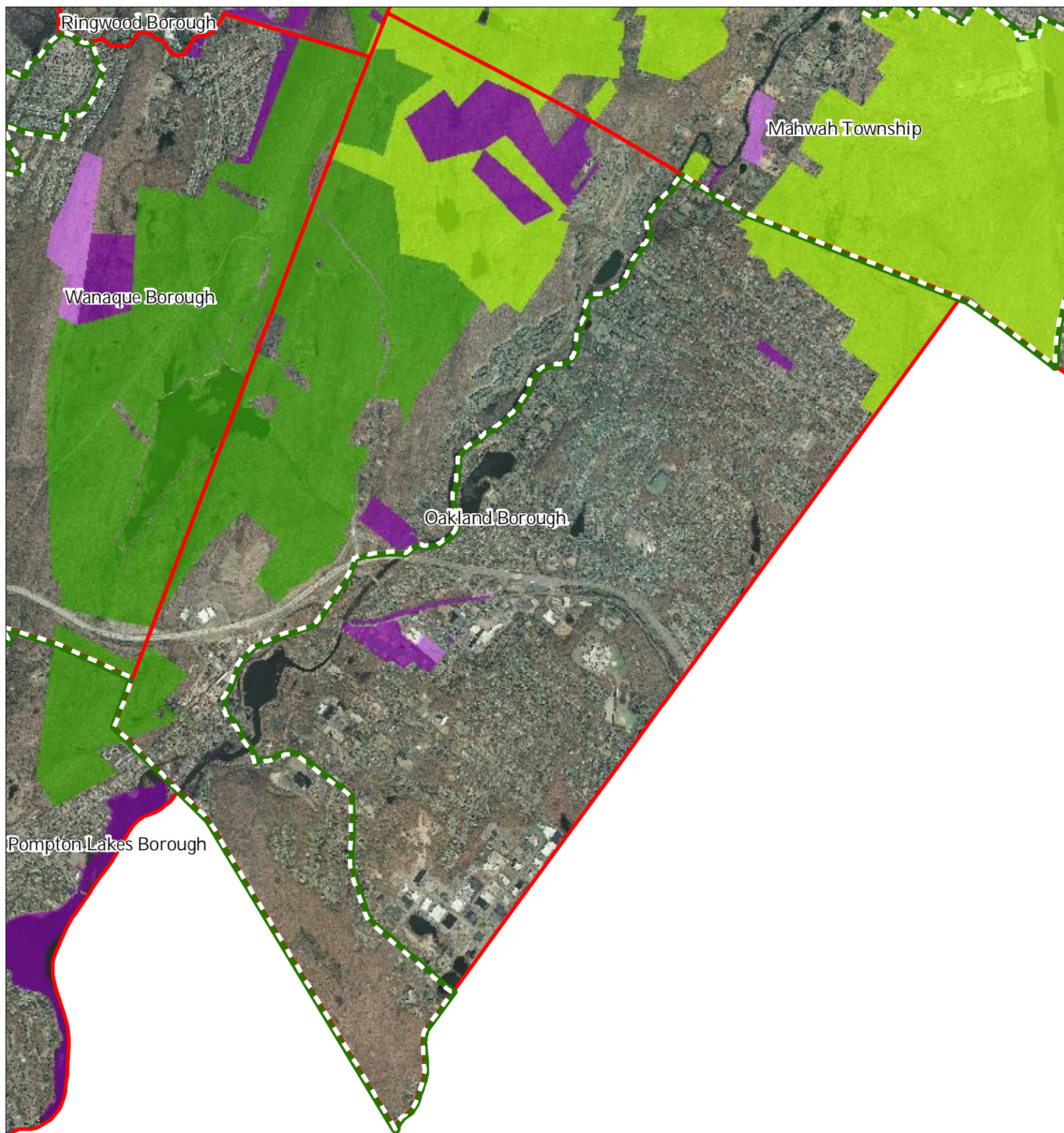
1 inch = 0.583 miles



March 2015



# Exhibit AA: Preserved Lands



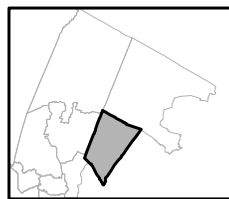
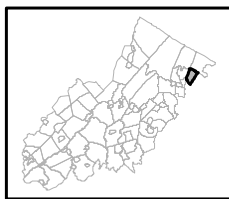
## Preserved Lands

- Federal Open Space
- State Open Space
- County Open Space
- Municipal Open Space
- Non-Profit/Private Open Space
- Water Supply Watershed Lands
- Preserved Farmland
- Highlands Transfer of Development Lands

## Conservation Easements

- Green Acres
- SADC Easements**
- SADC Final
- SADC Preserved
- Municipal Boundaries
- Preservation Area

## Oakland Borough



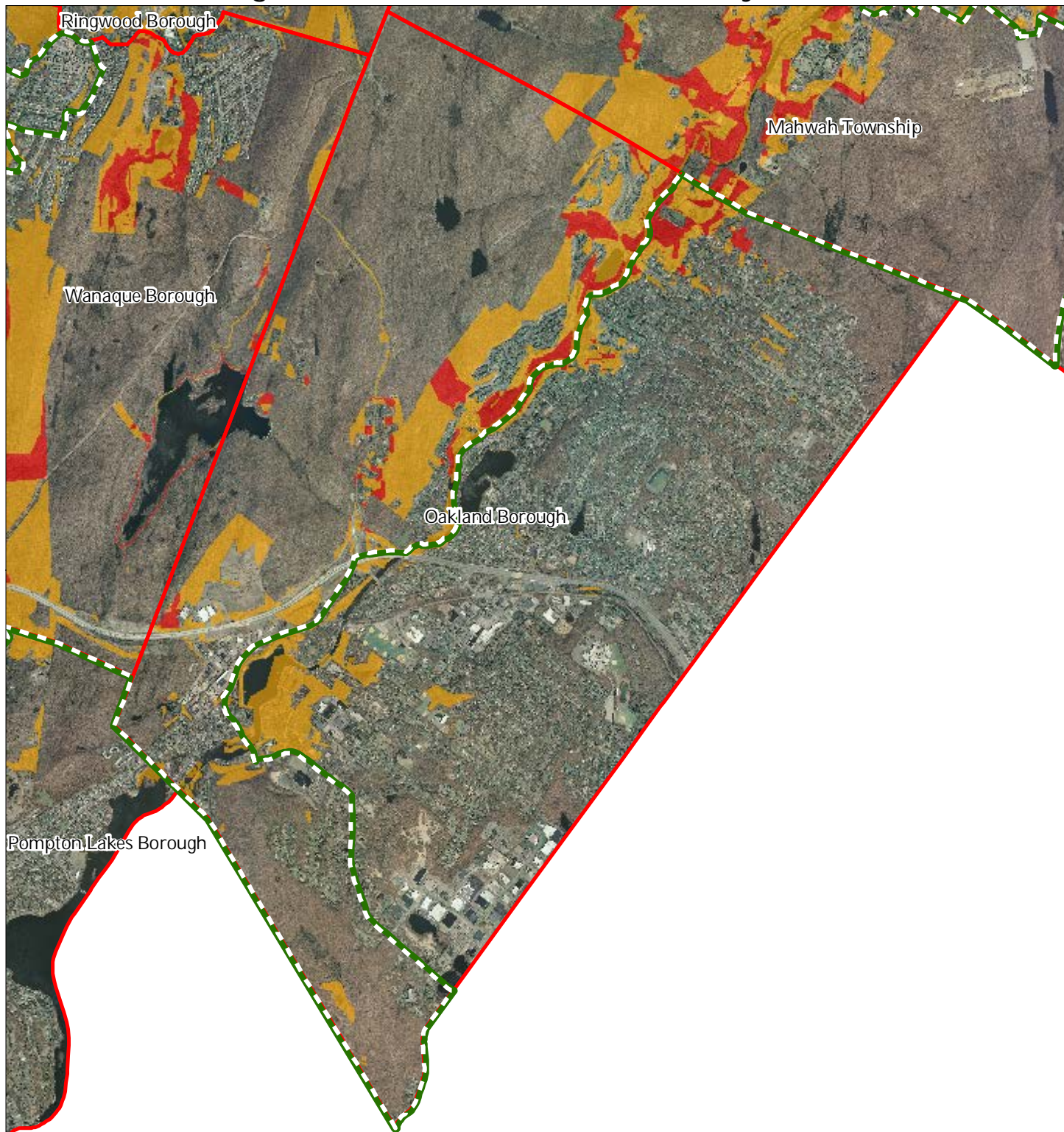
1 inch = 0.583 miles



March 2015



## Exhibit BB: Highlands Conservation Priority Areas



Conservation Priority Area

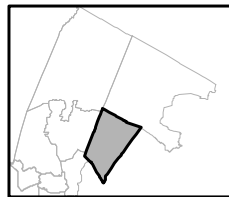
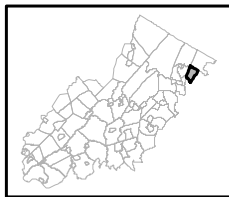
 *Moderate*

 *High*

 Preservation Area

 Municipal Boundaries

Oakland Borough



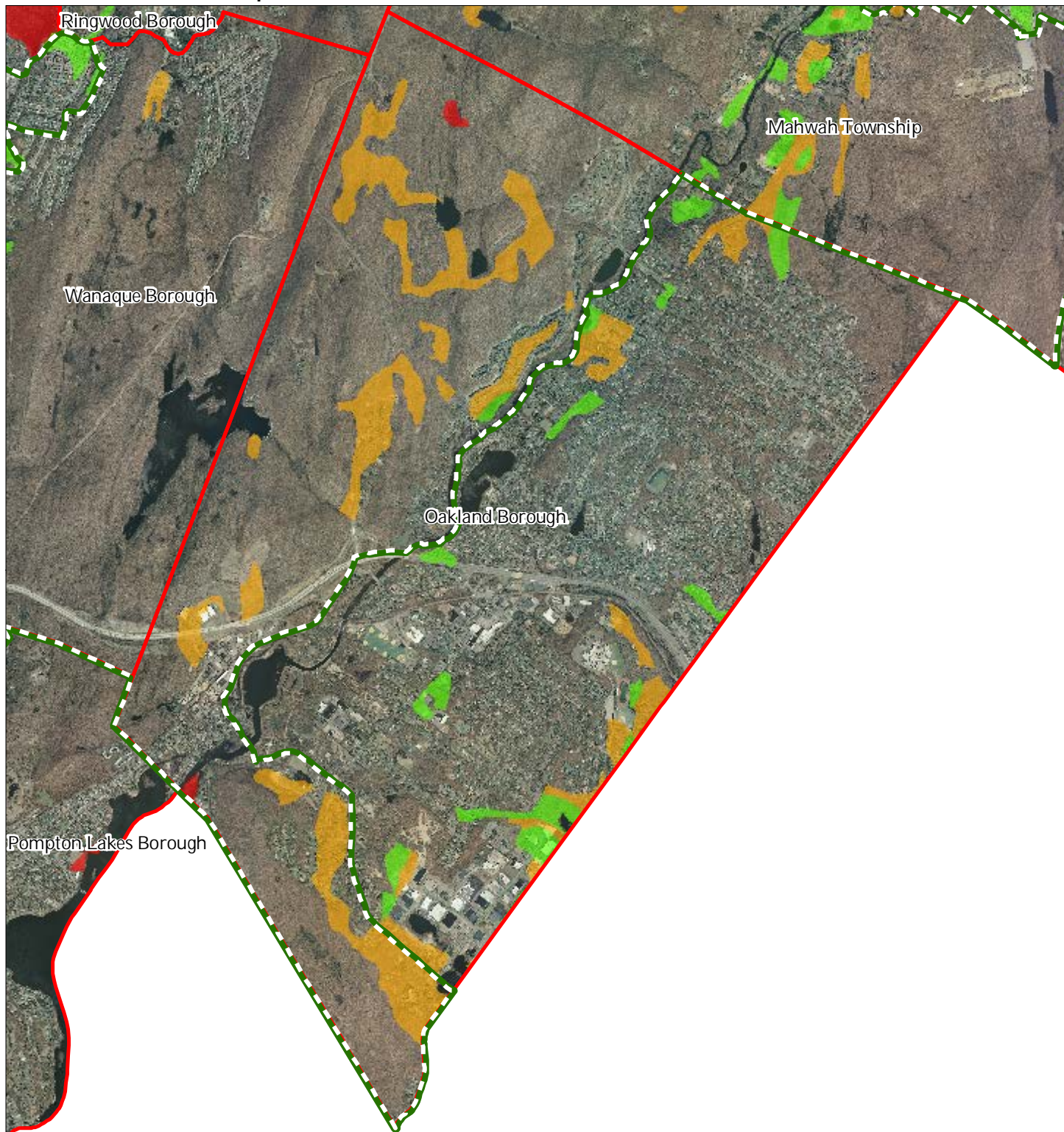
1 inch = 0.583 miles



March 2015



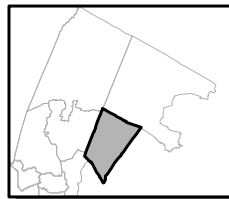
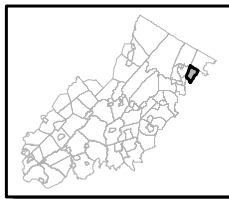
## Exhibit EE: Important Farmland Soils



### Important Farmland Soils

-  *Prime Farmland*
-  *Farmland of Local Importance*
-  *Farmland of Statewide Importance*
-  *Farmland of Unique Importance*
-  Preservation Area
-  Municipal Boundaries

### Oakland Borough



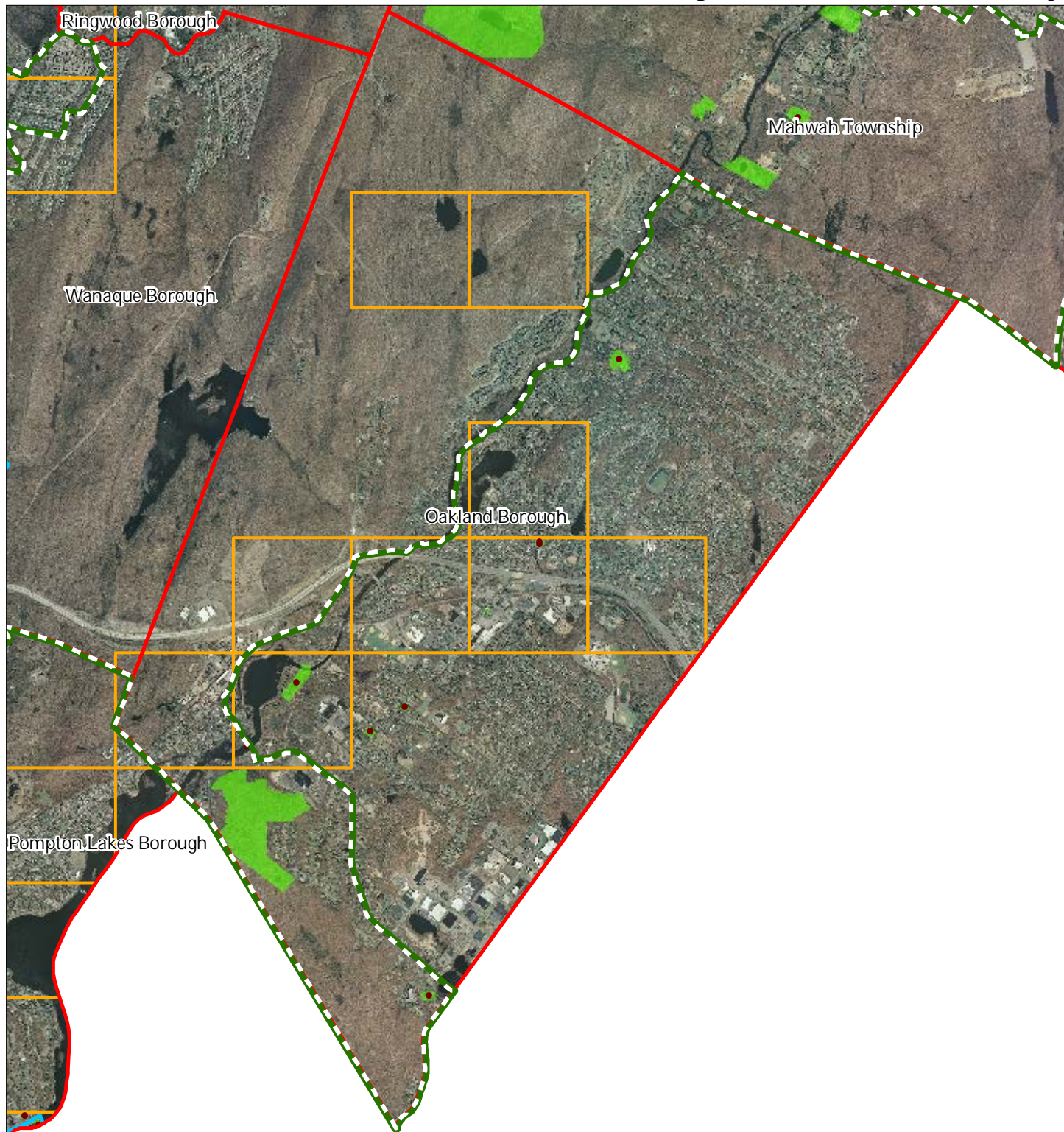
1 inch = 0.583 miles



March 2015

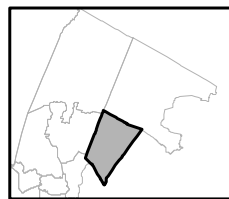
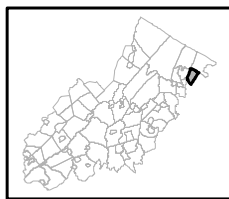


# Exhibit HH: Historic, Cultural, and Archaeological Resources Inventory



-  Preservation Area
-  Municipal Boundaries
-  Archaeological Grids (1 sqmi)
-  NJ Historic Districts
-  Historic Property Points
-  Historic Property Polygons

Oakland Borough



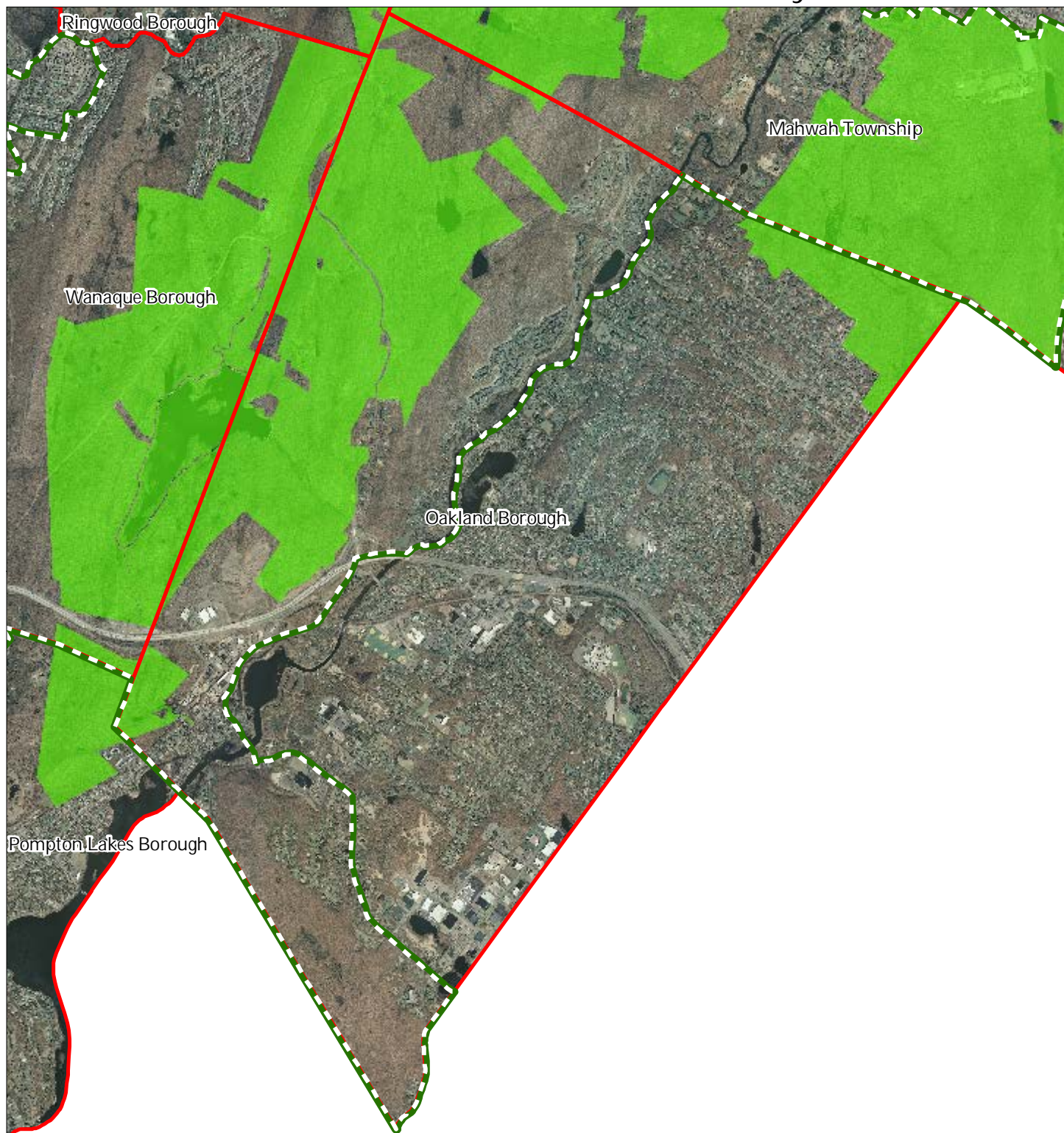
1 inch = 0.583 miles






March 2015

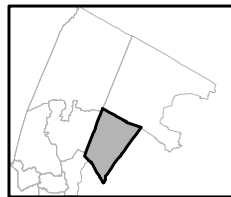
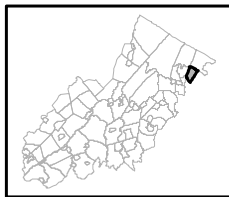


## Exhibit II: Baseline Scenic Resources Inventory



-  Scenic Resources
-  Municipal Boundaries
-  Preservation Area

Oakland Borough



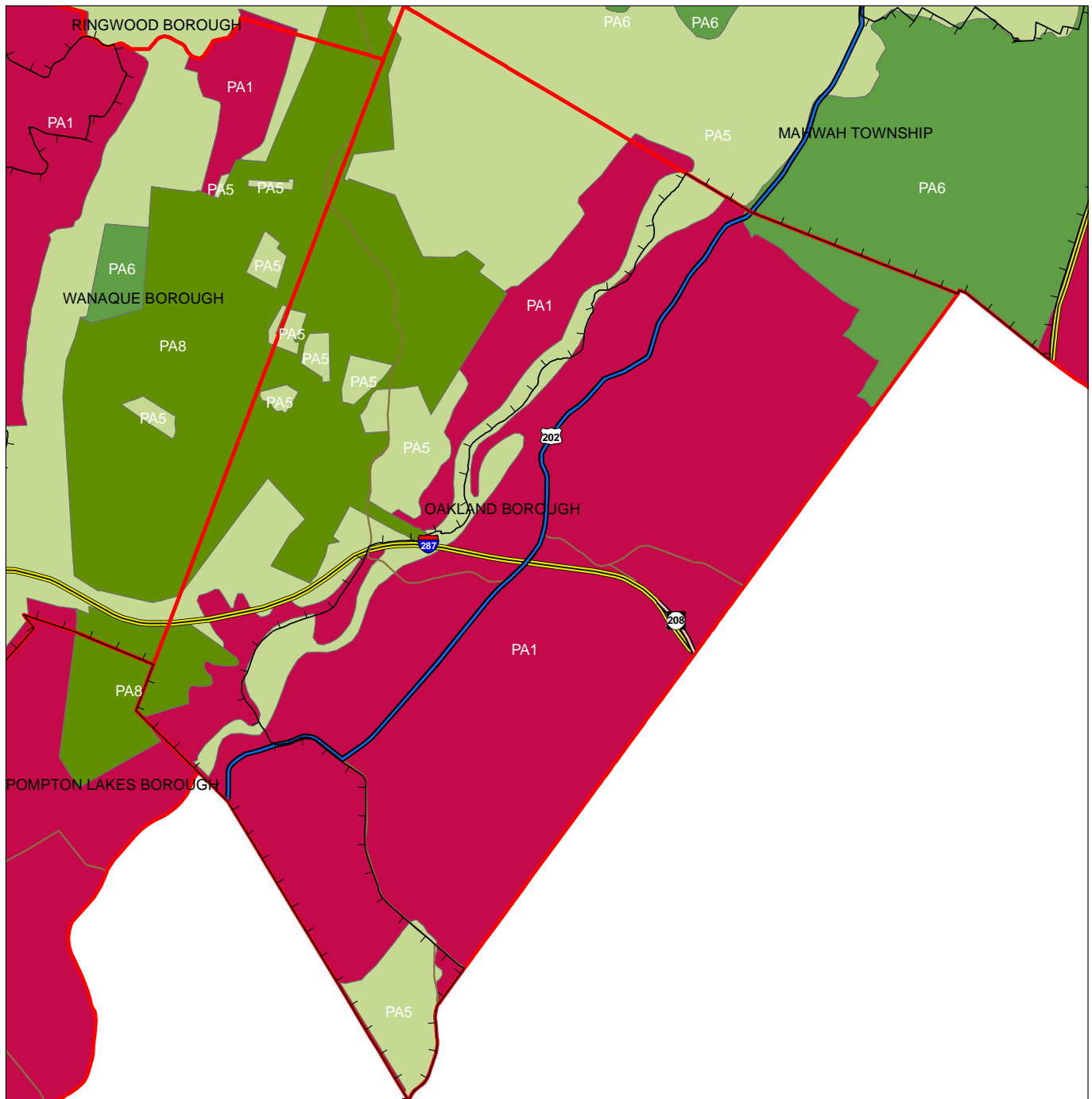
1 inch = 0.583 miles



March 2015



## Exhibit JJ: SDRP Planning Areas



### Legend

- Preservation Area
- Municipal Boundaries
- Interstate Highways
- U.S. Routes
- State Routes
- County Routes
- Designated Centers\*

### State Planning Areas\*

- METROPOLITAN (PA1)
- SUBURBAN (PA2)
- FRINGE (PA3)
- RURAL (PA4)
- RURAL ENVIRONMENTALLY SENSITIVE (PA42)
- ENVIRONMENTALLY SENSITIVE (PA5)
- PARK (PA6)
- FEDERAL PARK (PA7)
- STATE PARK (PA8)
- WATER (PA11)
- MILITARY (PA12)

1 inch equals 0.62 miles

\* All designated centers expired on 1/7/2008 except Byram (expires 5/19/2010), Stanhope (expires 10/16/2008), and Sparta and Vernon (expire 7/16/2009). Center designation may be redesignated by the State Planning Commission and the Highlands Council. State Planning Areas are from the State Development and Redevelopment Plan.

