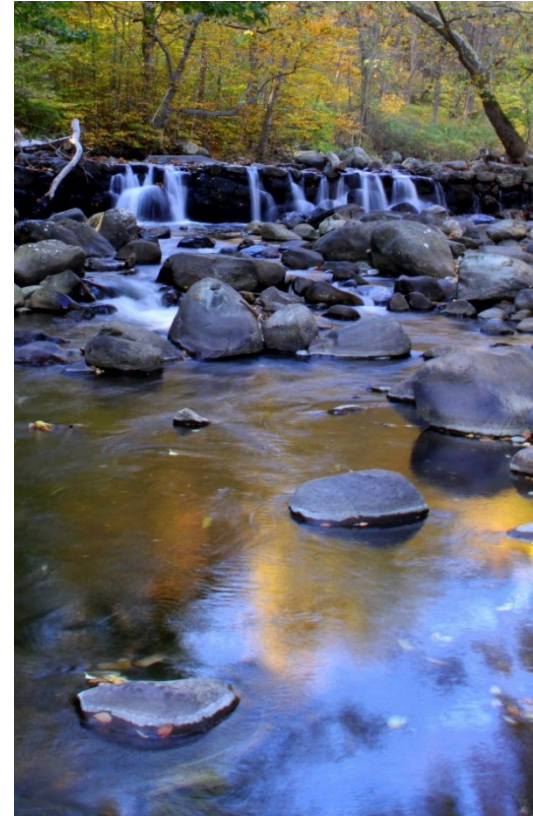
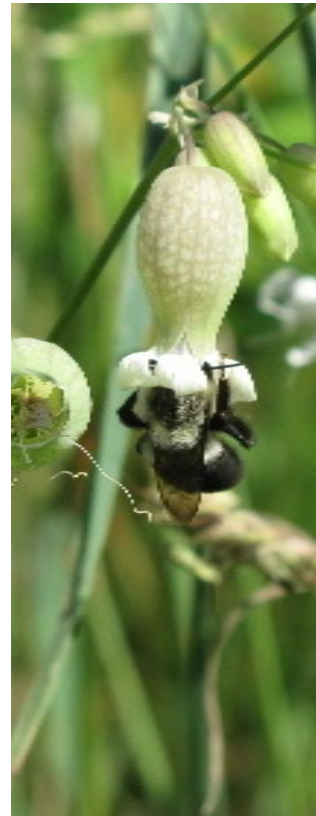




Highlands Council Meeting

June 16, 2022



Clinton Township Petition for Plan Conformance Center Designation



Payne Road



Round Valley Reservoir

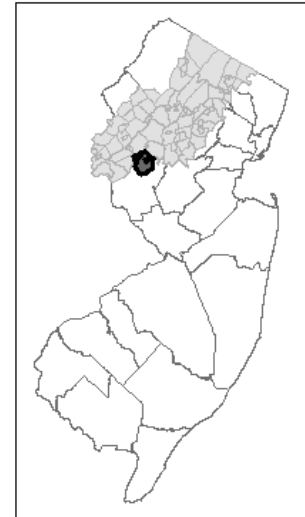
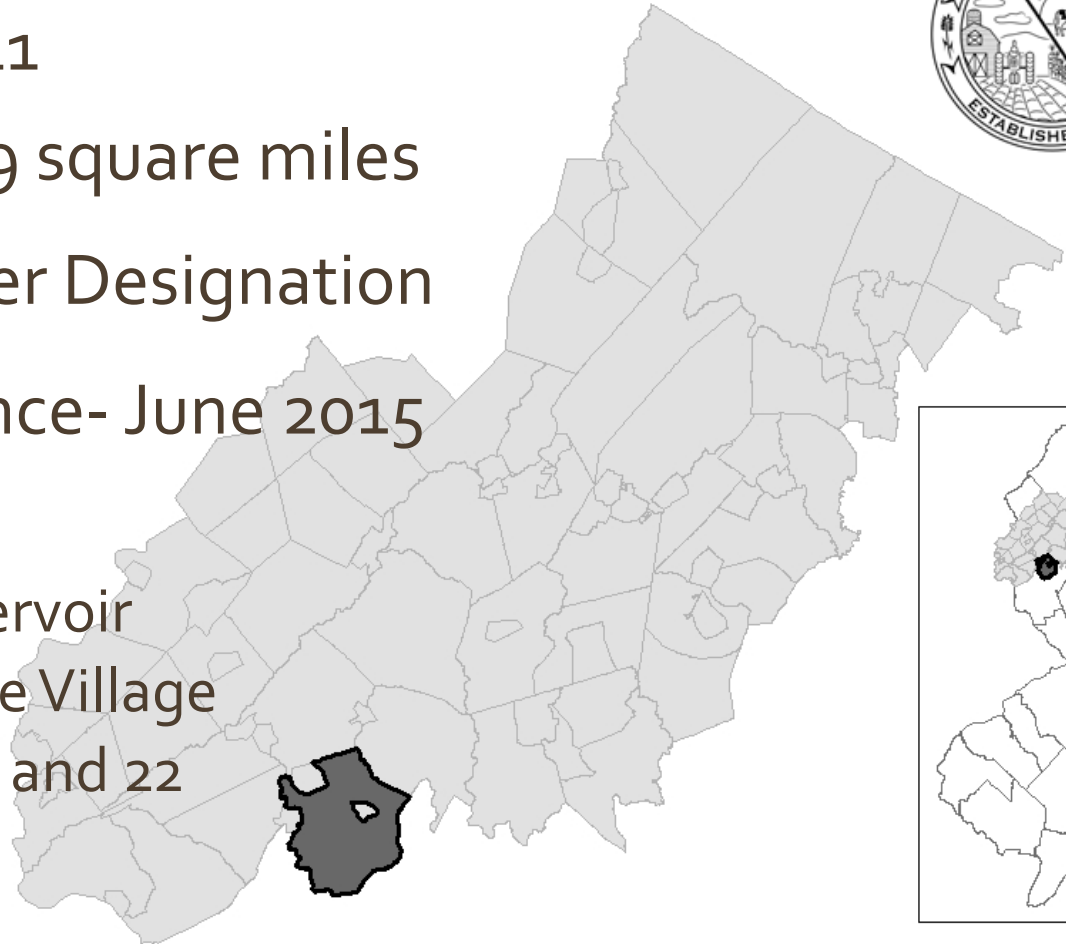


Annandale

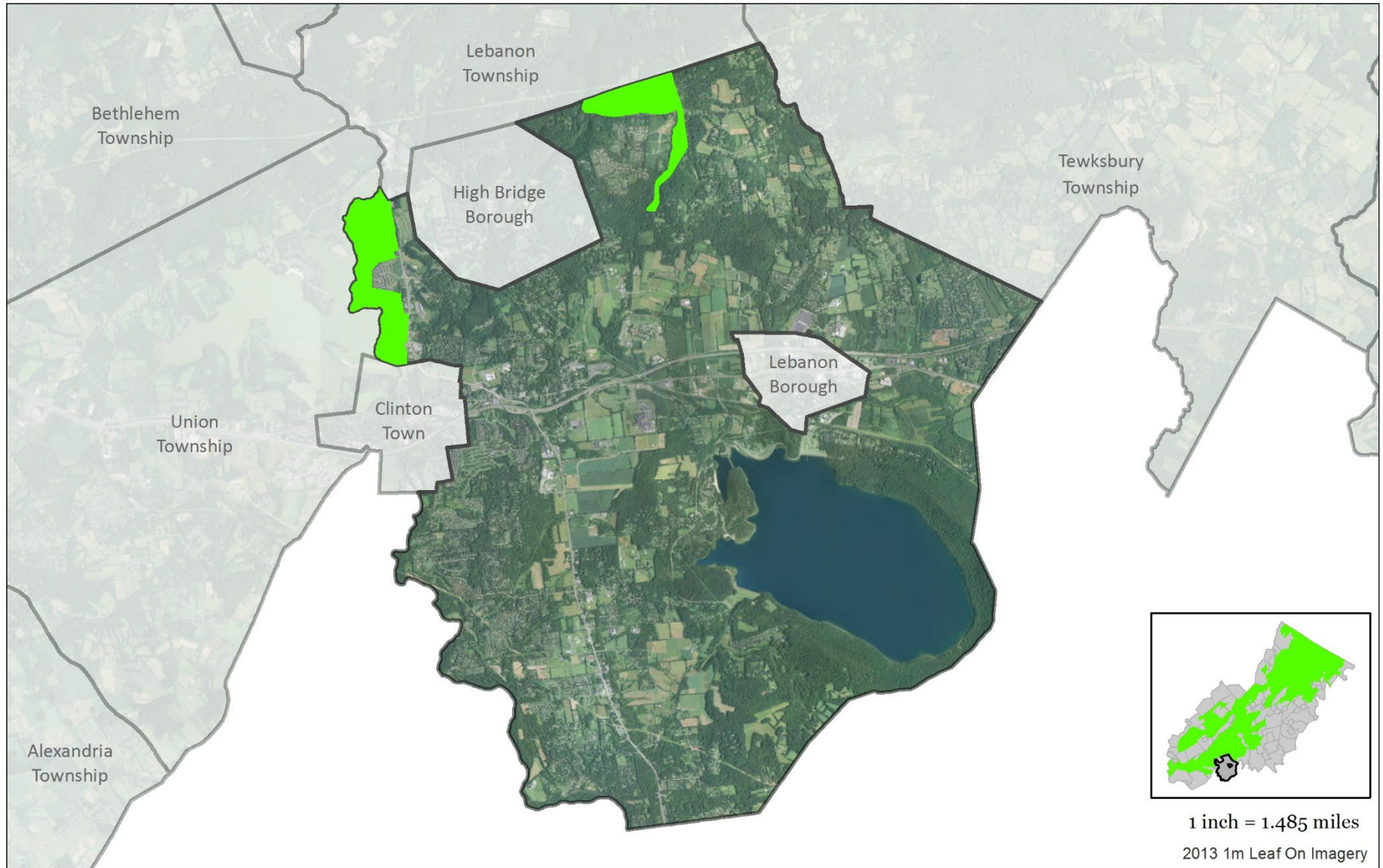
Clinton Township



- Incorporated 1841
- 21,706 acres/ 33.9 square miles
- Petition for Center Designation
- Initial Conformance- June 2015
- Notable features
 - Round Valley Reservoir
 - Historic Annandale Village
 - Bisected by Rt. 78 and 22



Clinton Township: Preservation Area



1 inch = 1.485 miles
2013 1m Leaf On Imagery

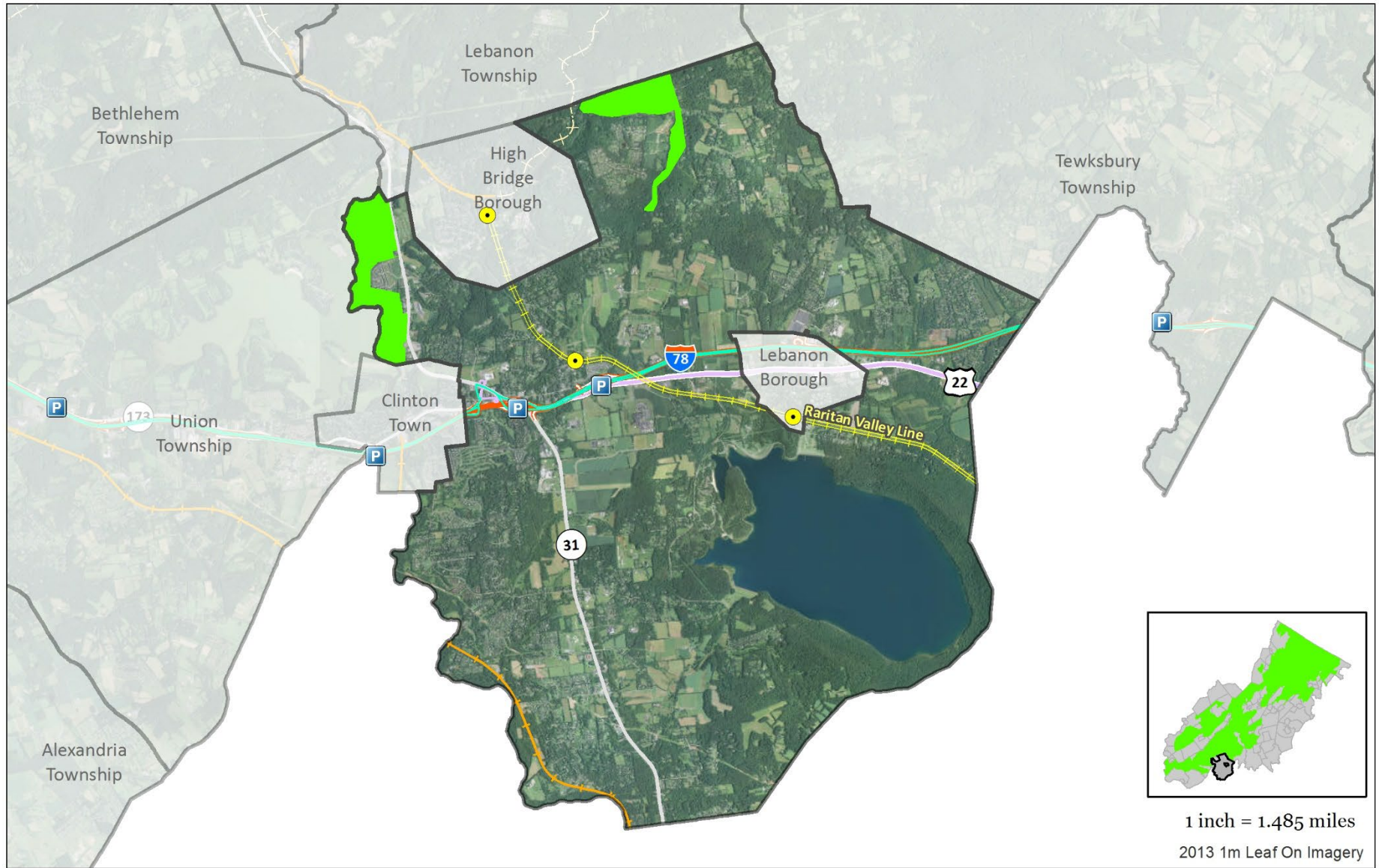
Legend

-  Preservation Area
-  Municipal Boundaries



N

Clinton Township: Highlands Transit Network



Legend

- | | | | |
|----------------------|----------------|-------------------|------------------------|
| Municipal Boundaries | Park and Rides | Rail - NJ Transit | Bus Lines - Private |
| Preservation Area | Rail Stations | Rail - Freight | Bus Lines - NJ Transit |
| | | Rail - Abandoned | |

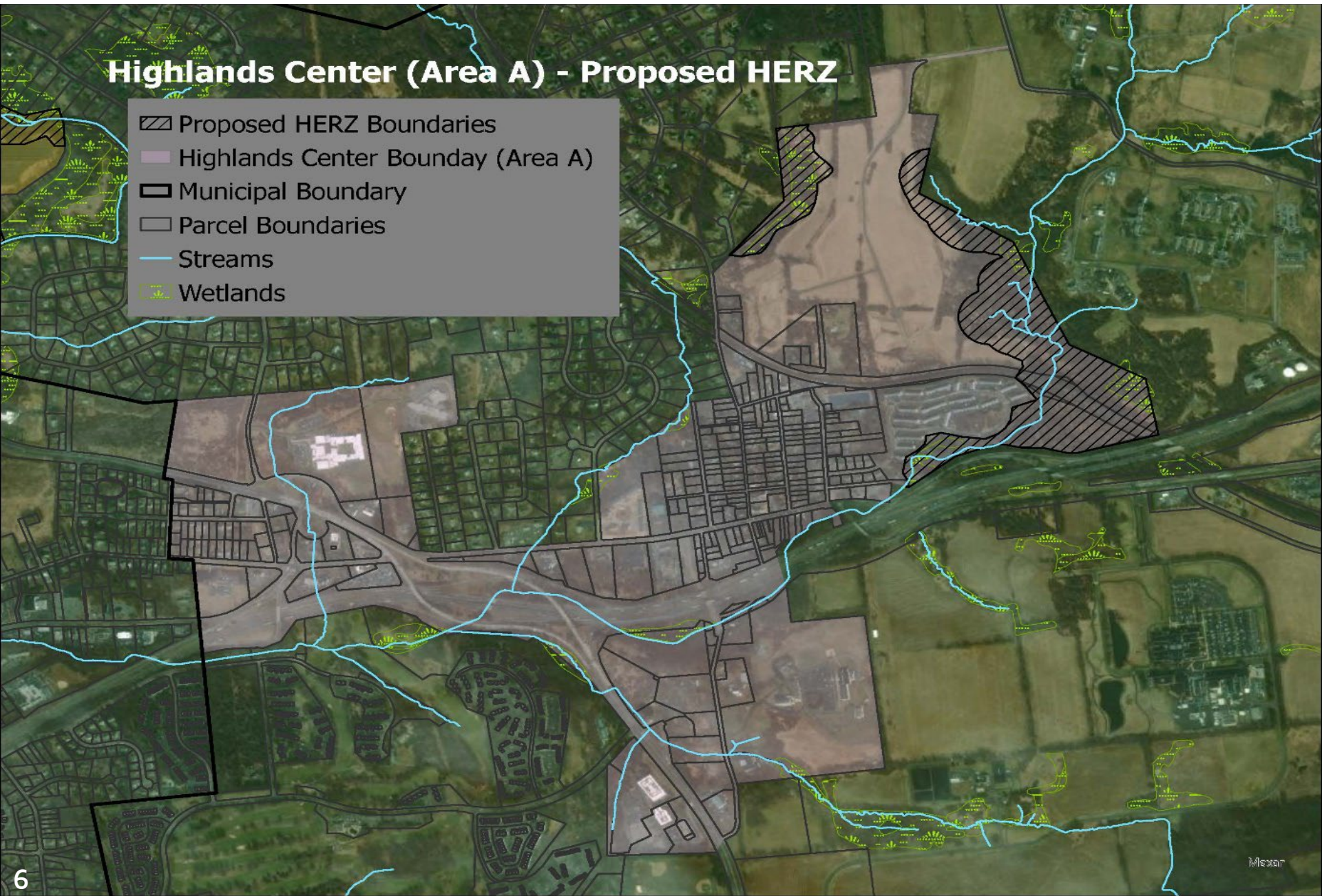


1 inch = 1.485 miles
2013 1m Leaf On Imagery

Annandale Center

Highlands Center (Area A) - Proposed HERZ

- Proposed HERZ Boundaries
- Highlands Center Bounday (Area A)
- Municipal Boundary
- Parcel Boundaries
- Streams
- Wetlands



Route 31 Commercial Center

Highlands Center (Area B) - Proposed HERZ

- Proposed HERZ Boundaries
- Highlands Center Boundary (Area B)
- Municipal Boundary
- Parcel Boundaries
- Streams
- Wetlands



Public Comment Summary

- Public Comment Period: April 5 – May 5, 2022
- One comment received
 - Jonathan Drill, Clinton Township Attorney
- Revised Final documents, including responses to comments, were posted to the Highlands Council website: June 8, 2022

Staff Recommendation:

Approve with conditions

Conditions

- Adoption of a Water Use and Conservation Management Plan
- Adherence to 2015 Implementation Plan & Schedule



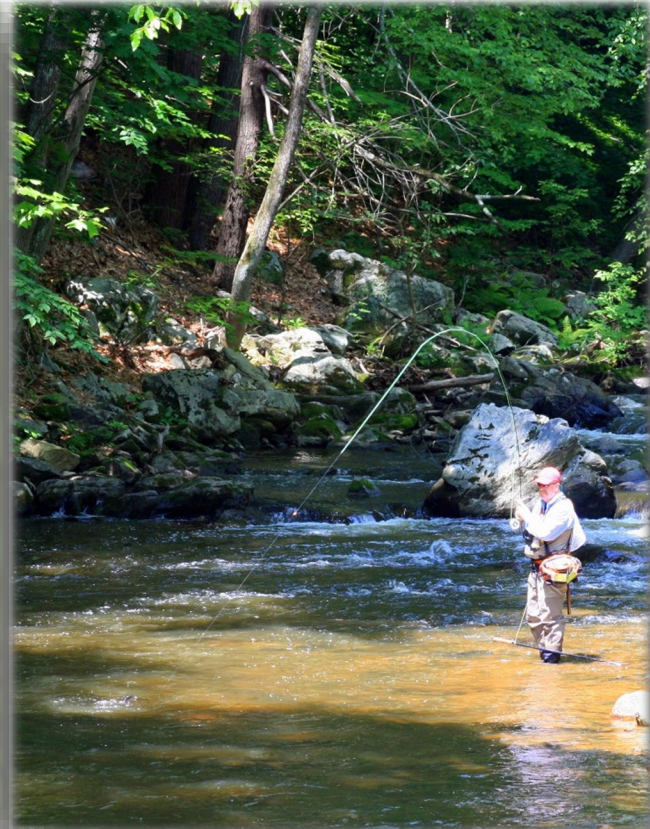
Clinton Township Petition for Plan Conformance



Annandale



Bray's Hill Preserve



South Branch Raritan River