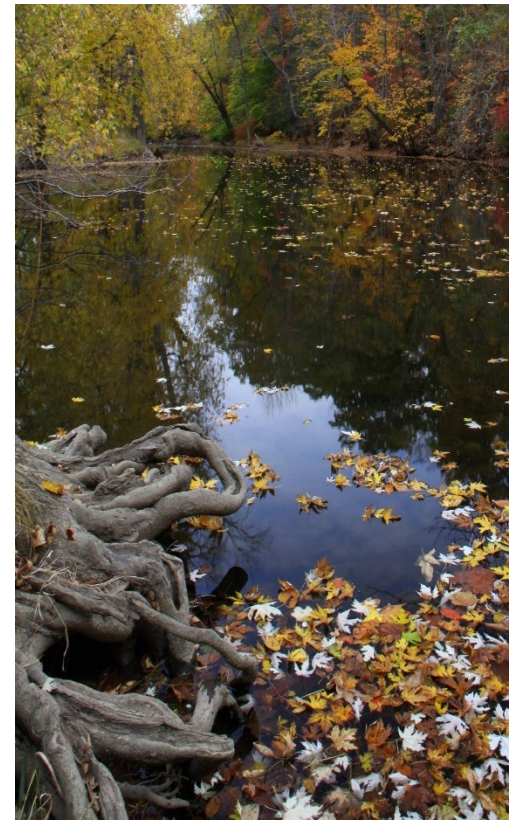


New Jersey Highlands Council Meeting

Thursday, July 21, 2022





The New Jersey Highlands Trail

July 21st, 2022

New Jersey Highlands Council Meeting

Presented by Zachary Cole
Long-Distance Trails Program Coordinator



Connecting People with Nature since 1920

Overview

- What is the New York- New Jersey Trail Conference?
- What is the Highlands Trail?
- What is new on the trail thanks to the Highlands Council?
- How does the trail benefit the New Jersey Highlands?

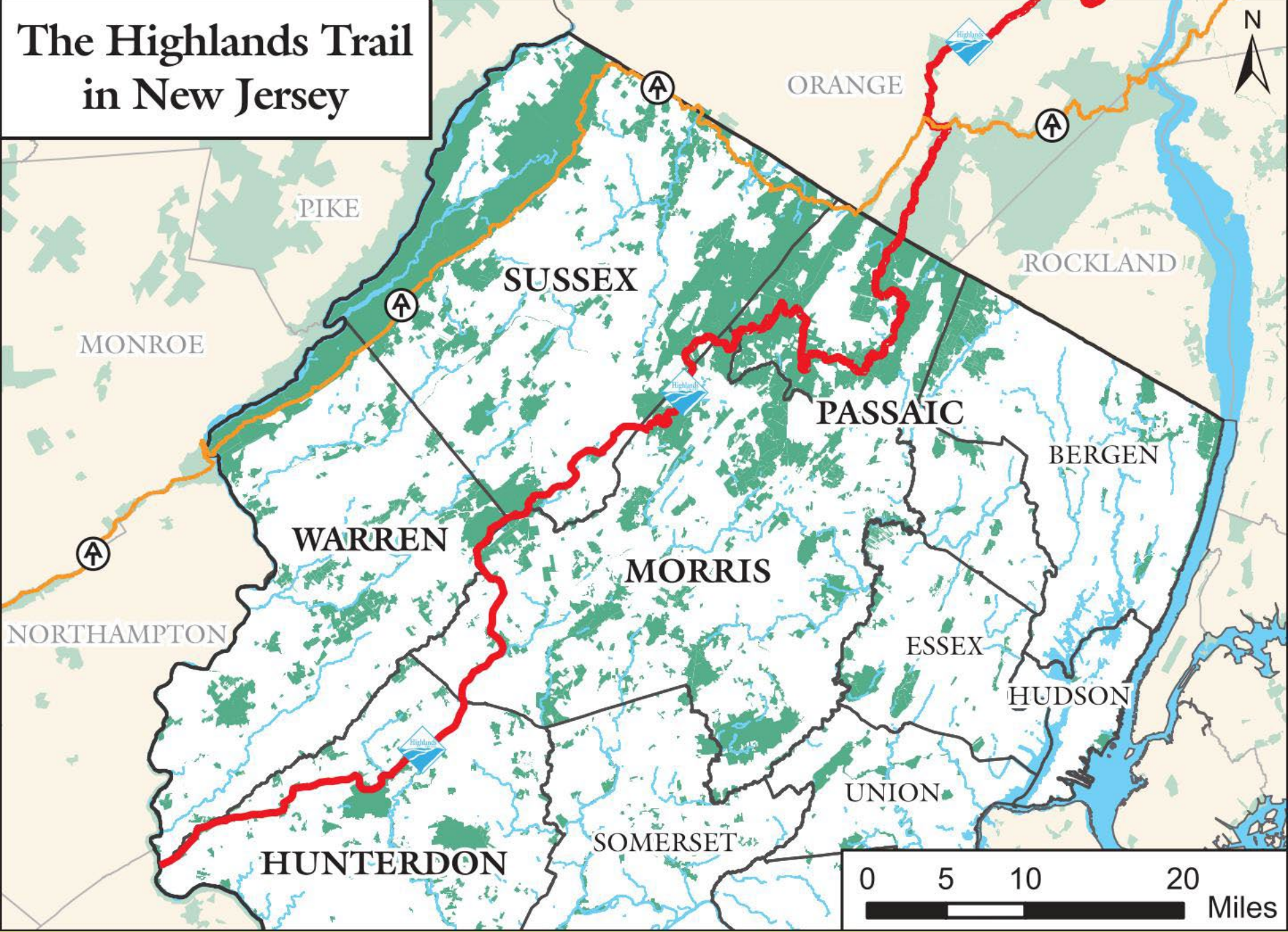


Connecting People with Nature since 1920

The Trail Conference

- The Trail Conference is a volunteer-lead organization partnering with land managers and regional authorities to build and protect public trails throughout the New York Metro Area.
- We use trails to promote strategic conservation and build community outdoors.
- We are also a trusted resource for maps and books that guide public use of more than 2,000 miles of trails.

The Highlands Trail in New Jersey





Connecting People with Nature since 1920



Monksville Reservoir, Long Pond Ironworks State Park



Connecting People with Nature since 1920



Little Windbeam, North Jersey District Water Supply Commission



What's New?

- Highlands Trail-specific signs installed along the whole length of the Trail add a layer of consistency across multiple park units and the entire region.
- A dedicated landing page hosted on the Trail Conference website with map resources and detailed information for hiking the Trail.
- Brochures about the Trail and the Highlands Region produced and distributed in high-visitation locations along the Trail.



Connecting People with Nature since 1920

Blazing the Trail!



Highlands Trail Blaze



Highlands Trail Spur Blaze



Connecting People with Nature since 1920

Highlands Trail Sign Campaign



Long Distance Trail Sign



Connecting People with Nature since 1920

Highlands Trail Sign Campaign

THE HIGHLANDS TRAIL

The Highlands Trail extends roughly 180 miles to connect the Delaware and Hudson Rivers, then continues beyond both into Pennsylvania and Connecticut. It showcases the natural beauty of the Highlands Region and connects local communities with the incredible recreational opportunities in their own backyards.

The Highlands Trail is built and maintained by partnerships between land managers and people just like you. To learn more, find maps, and get involved as a volunteer, visit TheHighlandsTrail.org.



This sign was funded by the New Jersey Highlands Council

Trailhead Sign



Parking & Trail Directional Sign



How Many?

| Sign Type | Number Installed |
|----------------------------|------------------|
| Long Distance Trail Signs | 11 |
| Trailhead Signs | 40 |
| Directional/ Parking Signs | 10 |

37 unique locations were scouted for potential signs along the length of the trail.



Connecting People with Nature since 1920

Long Distance Trail Sign



Long Distance Trail Sign mounted to kiosk,
Schooley's Mountain County Park



Tree-mounted Long Distance Trail Sign,
Long Pond Ironworks



Connecting People with Nature since 1920

Examples of Trailhead Signs



Sign mounted to post on the east bank of Riegelsville Bridge



Sign mounted to kiosk, Schooley's Mountain County Park



Trailhead sign at Salt Gastropub, Stanhope



Connecting People with Nature since 1920

Landing Page & Mobile Website



9:47 AM



nynjtc.org



LOGIN CART SEARCH
DONATE MAPS HIKE



The Highlands Trail currently extends approximately 180 miles through New Jersey and New York, from the Delaware River in the south to the Hudson River in the north. An extension through Putnam County, New York is a work in progress.

This scenic trail showcases the natural beauty of the local Highlands Region in New Jersey



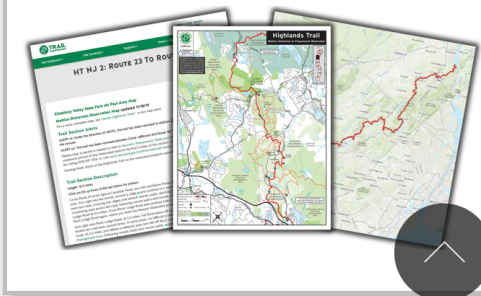
9:46 AM



nynjtc.org

Highlands Trail Guide and Maps

Our online Highlands Trail Guide is your key to exploring the Highlands Trail. It now includes new maps in a variety of formats, including downloadable PDFs, an interactive map, and Avenza Maps app maps. View the latest trail alerts and step-by-step directions to plan your next Highlands Trail adventure.

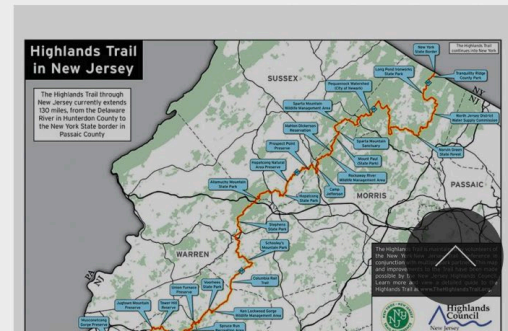


9:47 AM



nynjtc.org

Overview Maps



Planning a Hike

Get Outdoors • Get Involved • Support • News + Updates

HT NJ 2: ROUTE 23 TO ROUTE 206

Kittatinny Valley State Park Mt Paul Area Map
Mahlon Dickerson Reservation Map updated 11/18/19
 For a more complete map, see "Jersey Highlands Trails" in our map store.

Trail Section Alerts

ALERT #1: Under the direction of MCPC, the trail has been rerouted in Mahlon D. Dickerson Reservation.
ALERT #2: The trail has been rerouted between Camp Jefferson and Route 191.
 Please note: A permit is needed to hike in Newark's Pequannock Watershed for the first 5 miles of this section. Contact the NJ Department of Environmental Protection for a permit by calling (973) 697-1724, or visit www.nj.gov/cas/recreational-permit.
 Hunting Note: Some of the Highlands Trail on the watershed property expires...

Trail Section Description

Length: 16.5 miles
 Click on the icons in the text below for photos.
 Cross Route 23 at the light at Canistear Road, turn left and follow Route 23 west for 1.5 miles. Turn right into the woods, ascend a ridge, and continue to a view of the Delaware River. Turn right into the woods, ascend a ridge, and continue to a view of the Delaware River. Turn right into the woods, ascend a ridge, and continue to a view of the Delaware River.

Highlands Trail
Mahlon Dickerson to Pequannock Watershed

This map shows the route of the Highlands Trail from Mahlon Dickerson Reservation to the Pequannock Watershed. The trail is highlighted in red and passes through several areas including Sparta Mountain Wildlife Management Area, Mahlon Dickerson Reservation, and the Pequannock Watershed. Key landmarks include Camp Jefferson, Rock Lodge Road, and the Delaware River. A legend identifies symbols for trail types, points of interest, and public water bodies. A scale bar and north arrow are also present.

This regional map shows the Highlands Trail route in context with surrounding areas. The trail is highlighted in red and passes through several areas including Sparta Mountain Wildlife Management Area, Mahlon Dickerson Reservation, and the Pequannock Watershed. Key landmarks include Camp Jefferson, Rock Lodge Road, and the Delaware River. A legend identifies symbols for trail types, points of interest, and public water bodies. A scale bar and north arrow are also present.



Connecting People with Nature since 1920

Navigating the Trail

- The Highlands Trail free digital map available through Avenza is fully interactive with the ability to zoom in and out to different sections.
- Pinpoint your location on a map, even without cell or Wi-Fi connectivity, using your device's GPS function.
- The map also features a built-in compass and coordinates.
- Add personal data points with photos and track your hikes in real time.





The Trail and the Highlands

- Trails serve as educational resources raising awareness about the geographical, historical and ecological significance of a location or region.
- Trails foster sustainable economic development and promote equitable access to nature.
- Long-distance trails are drivers for preservation of contiguous high conservation value lands adding connectivity between parks and open space.
- The Highlands Trail represents a thread through the whole region giving visitors an opportunity to experience and learn about the Highlands region.



Connecting People with Nature since 1920

Questions?



Scenic Overlook, Allamuchy State Park